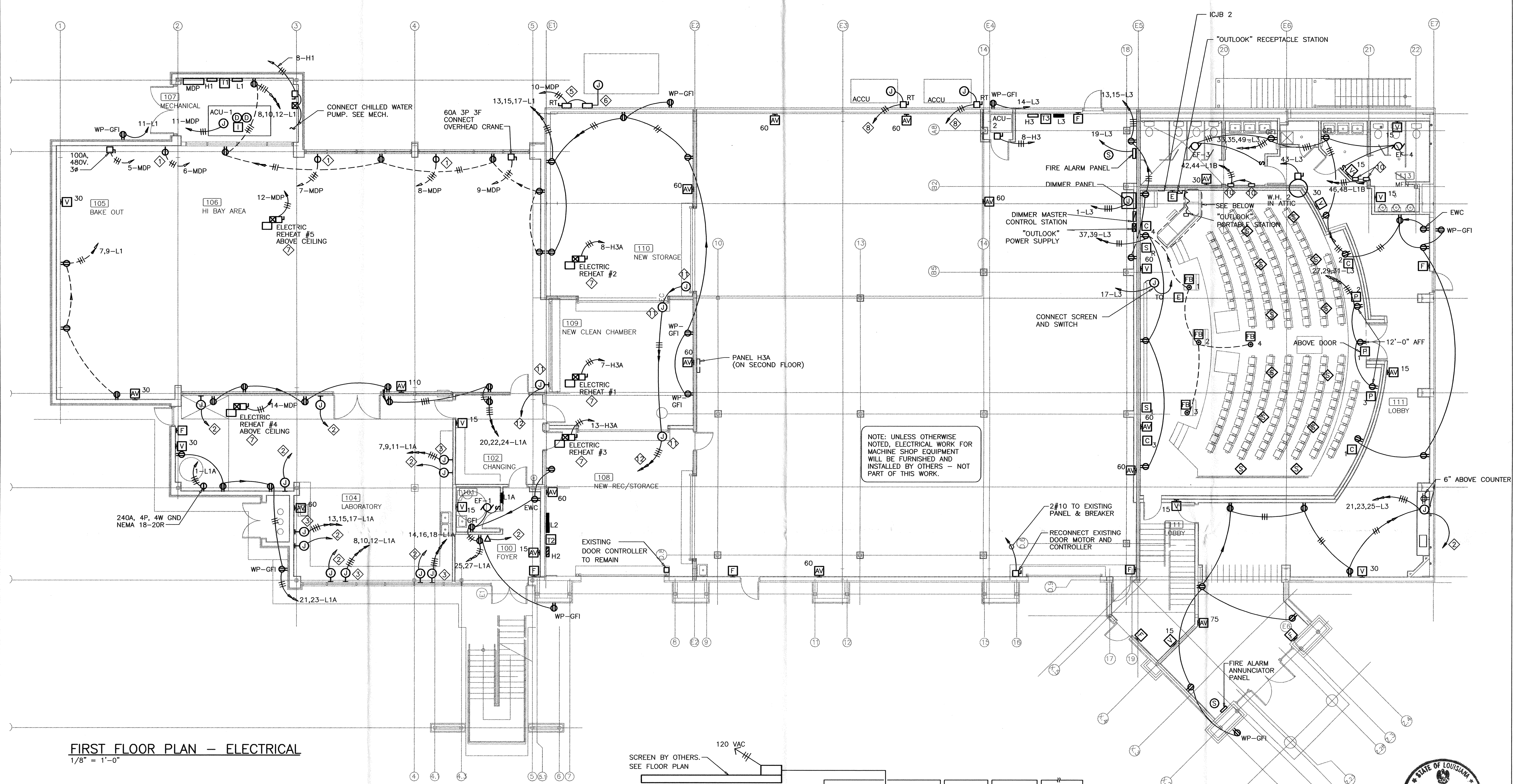


LIGO-D000302-00-L  
 ELECTRICAL  
 NEW STAGING BUILDING FOR LIGO  
 LIVINGSTON, LOUISIANA

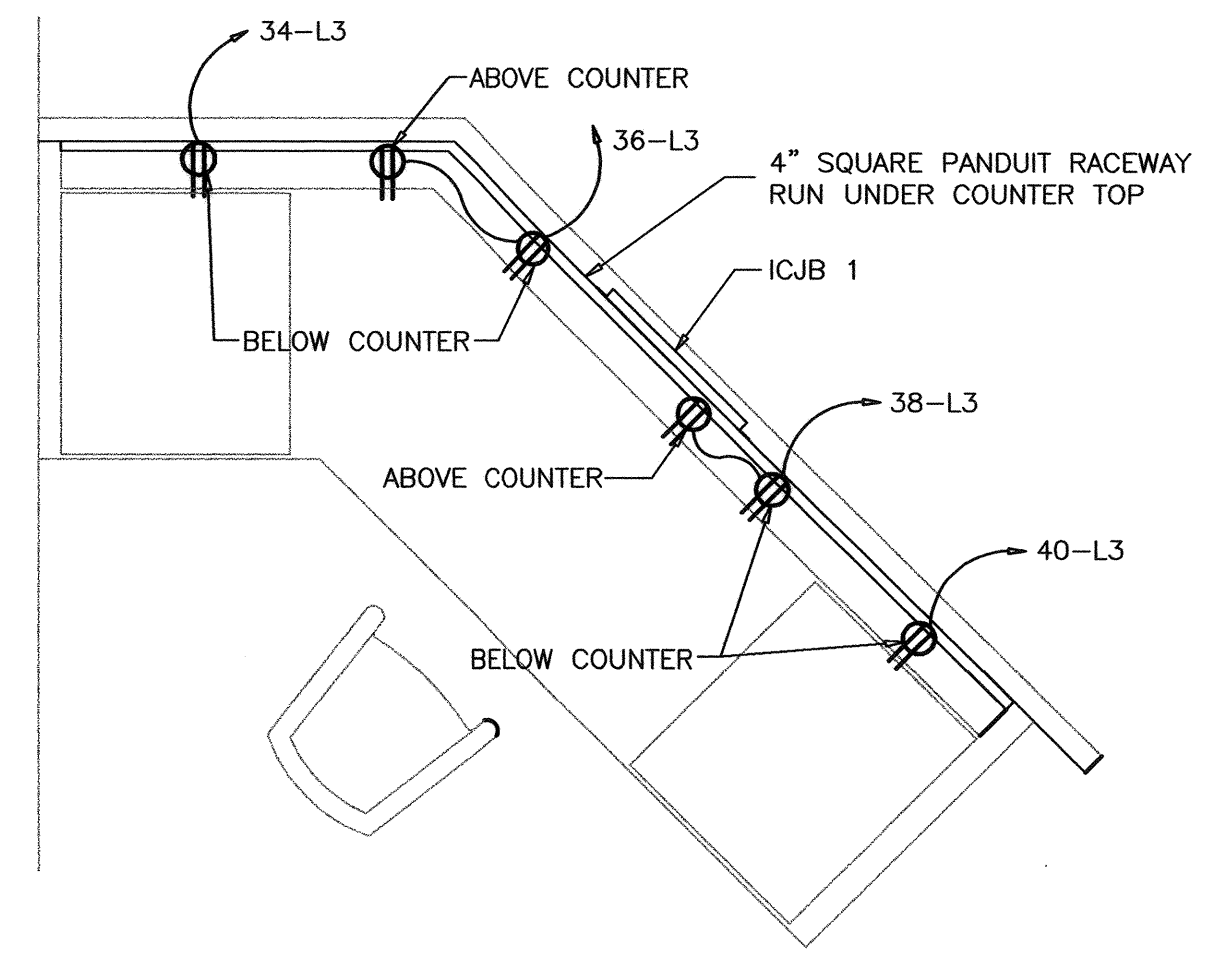
DATE SHEET 9-8-00

E-3

OF



FIRST FLOOR PLAN - ELECTRICAL  
 1/8" = 1'-0"

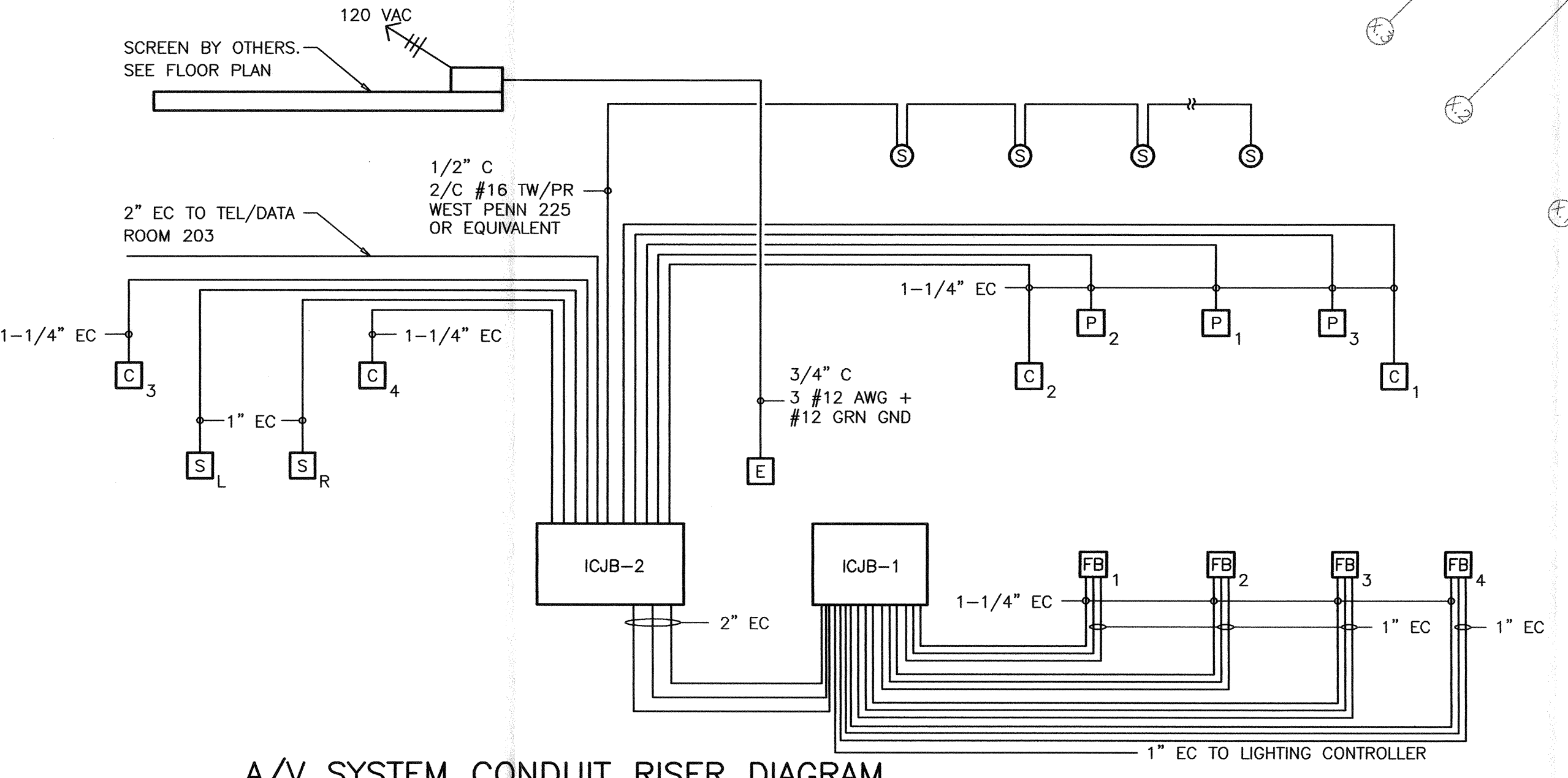


CONTROL COUNTER PLAN  
 NTS

**A/V SYSTEM SYMBOLS**

- [C] TELECONFERENCING CAMERA OUTLET - BLANK PLATE  
2 - GANG DEEP BOX, 7'6" ABOVE FLOOR
- [S] IN-WALL MULTIMEDIA LOUDSPEAKER  
5'-6" ABOVE FLOOR (CENTER OF CUTOUT)  
NILES AUDIO HD-800 w/FRAME, GRILLE AND BRACKET
- [P] PROJECTOR OUTLET - BLANK PLATE  
3 - GANG DEEP BOX, 12'-0" ABOVE FLOOR
- [E] SCREEN CONTROL - BY SCREEN MANUFACTURER  
1 - GANG DEEP BOX, 4'-0" ABOVE FLOOR
- [FB] MULTIMEDIA FLOORBOX  
ACE BACKSTAGE #122-SL-BK w/#102BBX  
10" SQUARE x 6" DEEP BACKBOX  
INSTALL FLUSH IN FLOOR
- [S] CEILING LOUDSPEAKER, FLUSH MOUNT  
TOA F-121CM, TAP AT 10 WATTS INITIALLY
- [J] JUNCTION BOX, FLUSH MOUNT  
16"W x 12"W x 4"D TYPE 1 SCREW COVER  
PULL BOX WITH FLUSH COVER

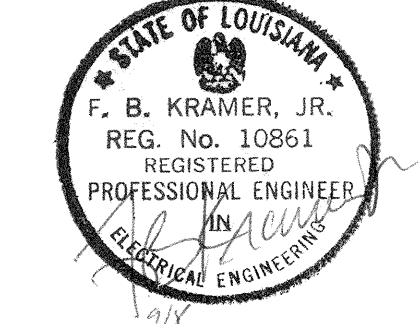
NOTE: VERIFY LOCATIONS WITH A/V CONTRACTOR PRIOR TO INSTALLATION.



A/V SYSTEM CONDUIT RISER DIAGRAM  
 NTS

**KEYNOTES**

- ① 480V, 30A, 4WGND NEMA L16-30R
- ② 1" EC TO COMMUNICATION BACKBOARD ON SECOND FLOOR.
- ③ TERMINATE CIRCUITS IN JUNCTION BOX WITH BLANK COVER FOR FUTURE USE BY OWNER.
- ④ FLOOR BOX
- ⑤ 30 AMP, 480V, 3P, 4W FUSIBLE, RAIN-TIGHT. FUSE IN ACCORDANCE WITH REQUIREMENTS OF EQUIPMENT SERVED.
- ⑥ CONNECT TREATMENT PLANT & CONTROLLER.
- ⑦ CONNECT REHEAT COIL ABOVE CEILING. PROVIDE FUSING AS REQUIRED BY UNIT ACTUALLY INSTALLED.
- ⑧ 3/8, 3/4" C TO EXISTING PANEL H2. RECONNECT TO EXISTING 50 AMP, 3 POLE CIRCUIT USED TO SERVE UNIT IN ITS FORMER LOCATION.
- ⑨ BELDEN 9773 CABLE, 1/2" C
- ⑩ CONNECT HAND DRYER
- ⑪ CONNECT MOTORIZED DOOR AND CONTROLLER.
- ⑫ 4#10, 1/2" C TO EXISTING PANEL. INSTALL 3-30/1 CIRCUIT BREAKERS FOR NEW DOOR MOTORS.



LIGO-D000302-00-L