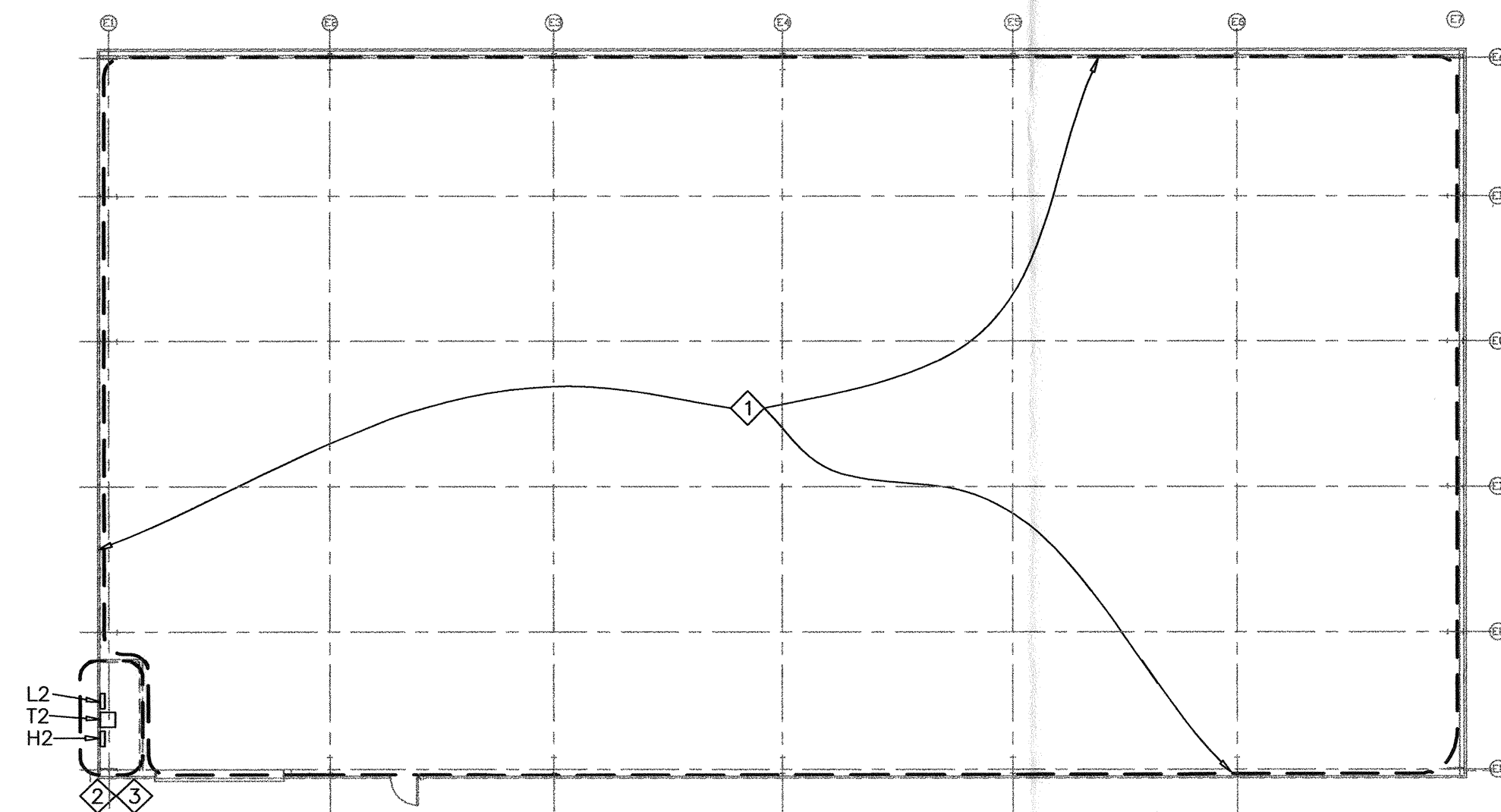


SITE PLAN
1' = 30'-0"



DEMOLITION PLAN
1/16" = 1'-0"

GENERAL DEMOLITION NOTES

DEMOLITION DRAWINGS ARE BASED ON CASUAL FIELD OBSERVATION. RECORD DRAWINGS ARE NOT AVAILABLE. REPORT DISCREPANCIES TO ENGINEER BEFORE DISTURBING EXISTING INSTALLATION.

VERIFY THAT WIRING AND EQUIPMENT TO BE DISCONNECTED SERVE ONLY ABANDONED FACILITIES NOT REQUIRED TO REMAIN.

DISCONNECT ELECTRICAL SYSTEMS NOTED FOR REMOVAL.

REMOVE ABANDONED WIRING TO SOURCE OF SUPPLY.

DISCONNECT ABANDONED OUTLETS AND REMOVE DEVICES. REMOVE ABANDONED OUTLETS IF CONDUIT SERVICING THEM IS ABANDONED AND REMOVED. PROVIDE BLANK COVER FOR ABANDONED OUTLETS THAT ARE NOT REMOVED.

DEMOLITION KEYNOTES

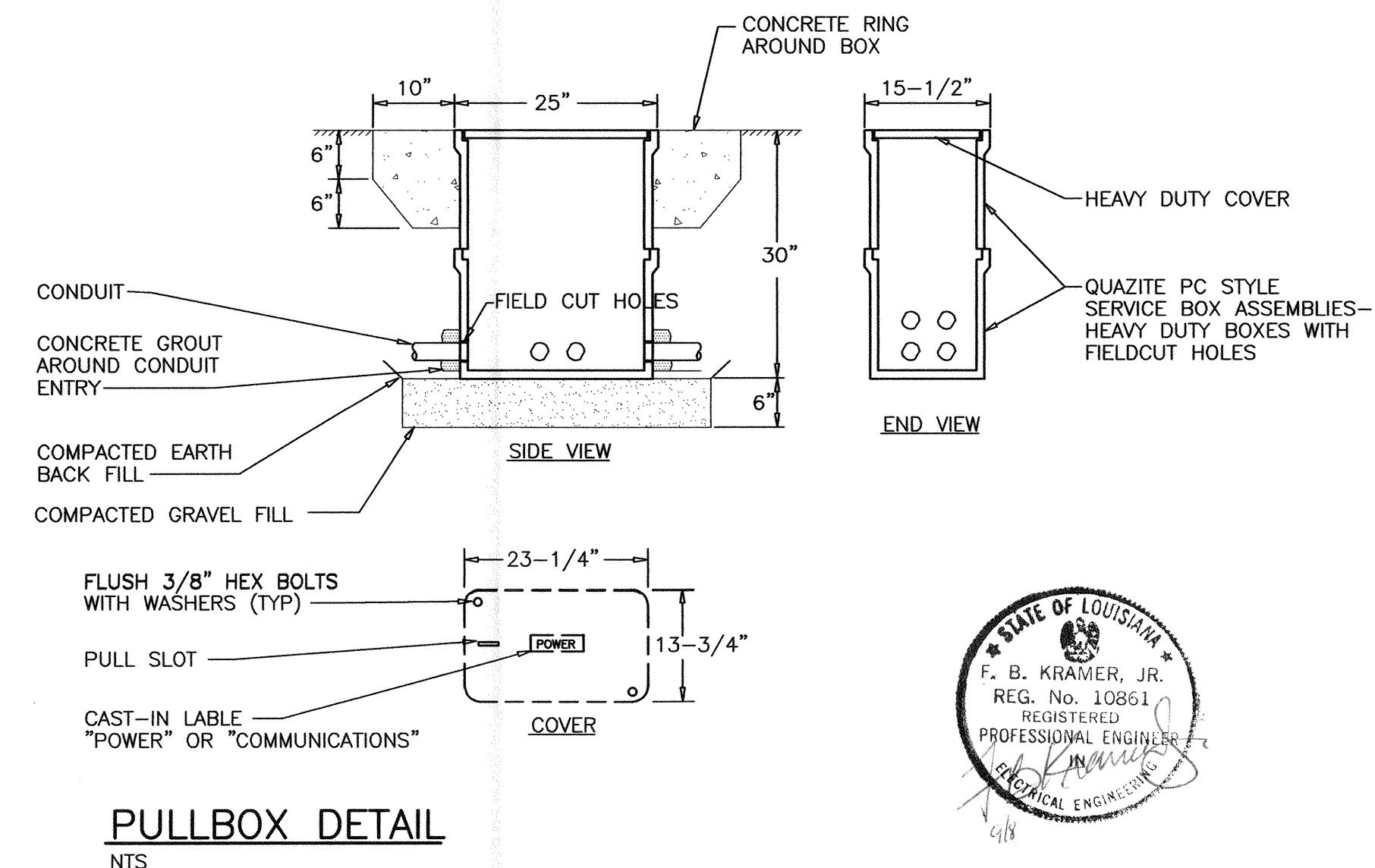
- ◆ UNLESS OTHERWISE NOTED, REMOVE ALL EXISTING ELECTRICAL WORK IN THIS AREA, INCLUDING EXTERIOR LIGHTING MOUNTED ON BUILDING AND SERVICE TO AIR CONDITIONING UNITS LOCATED OUTSIDE BUILDING.
- ◆ EXISTING PANELBOARDS AND TRANSFORMER TO REMAIN. DISCONNECT EXISTING SERVICE FEEDER AT EACH END & ABANDON IT.
- ◆ EXISTING COMMUNICATION CABLE ENTERING BUILDING AT THIS LOCATION SHALL REMAIN. SEE ALSO TELEPHONE CONDUIT RISER DIAGRAM.

SYMBOL SCHEDULE

SYMBOL	DESCRIPTION
○	LIGHTING FIXTURE - FLUORESCENT
— —	LIGHTING FIXTURE - BARE LAMP FLUORESCENT STRIP
○	LIGHTING FIXTURE - CEILING OR RECESSED
○	LIGHTING FIXTURE - WALL OR BRACKET
⊗	EXIT LIGHT WALL OR CEILING MTD. FACES & ARROWS AS NOTED.
○A	LETTER AT FIXTURE SYMBOL DENOTES FIXTURE TYPE PER LTG FIXTURE SCHEDULE
⊕	EMERGENCY LIGHT - BATTERY UNIT
S3	TOGGLE SWITCH, THREE-WAY
S	TOGGLE SWITCH, SINGLE POLE
Sa	TOGGLE SWITCH, SUBSCRIPT INDICATES OUTLET CONTROLLED
⊕	PHOTOELECTRIC CONTROL
⊕	CONTACTOR
⊕	DUPLEX RECEPTACLE
⊕GFI	DUPLEX RECEPTACLE WITH INTEGRAL GROUND FAULT CIRCUIT INTERRUPTER
⊕EWC	DUPLEX RECEPTACLE CONCEALED BEHIND ELECTRIC WATER COOLER
⊕	QUADRUPLX RECPT.-(2 DUPLEX RECPT. WITH SINGLE COVER PLATE)
⊕	SPECIAL RECEPTACLE AS NOTED
⊕	COMPUTER OUTLET - SEE DETAIL
⊕	JUNCTION BOX
⊕A	NEW PANELBOARD DESIGNATED "A" (⊕ = 280Y/120V., ⊕ = 480/277V.)
3#8, 1#10G., 1" C.	THREE SIZE 8 CONDUCTORS & ONE SIZE 10 EQUIP. GROUND IN 1" CONDUIT
T	TRANSFORMER
⊕	MAGNETIC STARTER
⊕	DISCONNECT OR SAFETY SWITCH
⊕	CROSSHATCHING INDICATES EQUIP. DISCONNECTION AND REMOVAL
⊕	DASHED EQUIPMENT INDICATES EXISTING EQUIP. TO REMAIN
— —	CONDUIT TURN DOWN
— —	CONDUIT TURN UP
L-2,3	CONDUIT-HOMERUN CIRCUITS 2 & 3 TO PANEL L (ARROWS DENOTE CIRCUITS)
— —	CONDUIT RUN CONCEALED OVERHEAD OR IN WALLS
— —	CONDUIT RUN EXPOSED
— —	CONDUIT RUN IN OR UNDER FLOOR SLAB OR UNDERGROUND
— —	CIRCUIT WIRING IN CONDUIT. MARKS DENOTE QUANTITY OF PHASE AND NEUTRAL CONDUCTORS. CONDUIT IS TO INCLUDE AN EQUIPMENT GROUND WIRE SIZED PER NEC (NOT SHOWN). NO MARKS INDICATE 2#12, 1#12 G, 1/2"COND.
— —	MULTI-OUTLET ASSEMBLY (PLUGSTRIP)
— —	VERTICAL RACEWAY/ OUTLET ASSEMBLY (TELE-POWER POLE)
FACP	FIRE ALARM CONTROL PANEL
F	FIRE ALARM MANUAL PULL STATION
AV 75	FIRE ALARM COMBINATION AUDIBLE/VISUAL ALARM INDICATING APPLIANCE (CANDELA NOTED)
A	FIRE ALARM AUDIBLE ALARM INDICATING APPLIANCE
V 15	FIRE ALARM VISUAL ALARM INDICATING APPLIANCE (CANDELA NOTED)
H	FIRE ALARM HEAT DETECTOR
S	FIRE ALARM SMOKE DETECTOR - CEILING MOUNTED
D	FIRE ALARM SMOKE DETECTOR-DUCT MOUNTED
RE:1/E2	REFERENCE TO DETAIL 1, SHEET E2
◆	REFERENCE TO ELECTRICAL KEYNOTE NO.2
⊕	MOTOR (NUMBER INDICATES HORSEPOWER)
EC	EMPTY CONDUIT WITH PULL WIRE
⊕	DUPLEX RECEPTACLE IN CAST METAL FLOOR BOX WITH HINGED BRASS COVER & CARPET FLANGE

NOTES:

1. SEE SHEETS E3 & E6 FOR ADDITIONAL SYMBOLS
2. INSTALL SEPARATE GREEN INSULATED GROUNDING CONDUCTOR IN EACH CONDUIT RUN.



PULLBOX DETAIL
NTS

