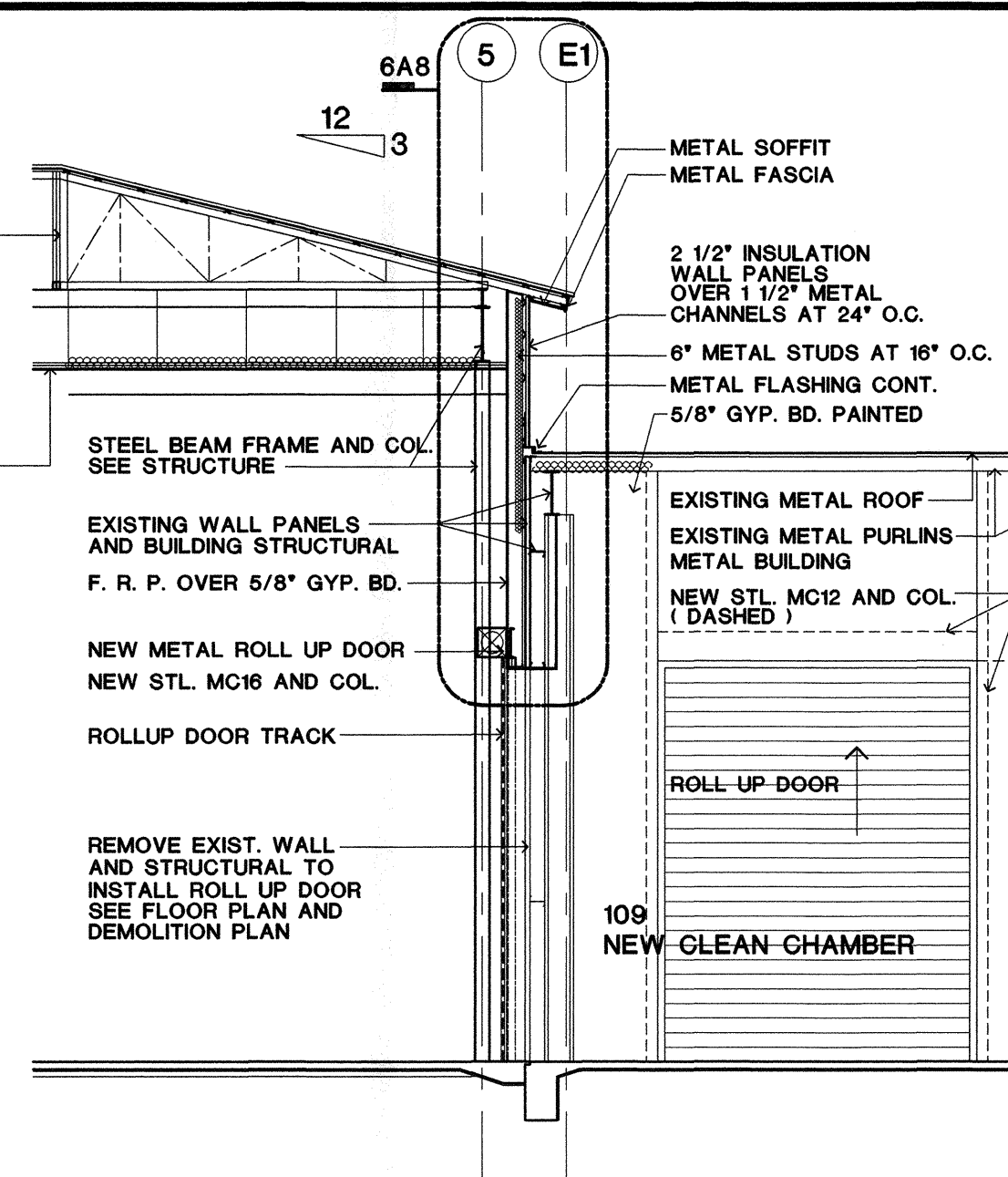
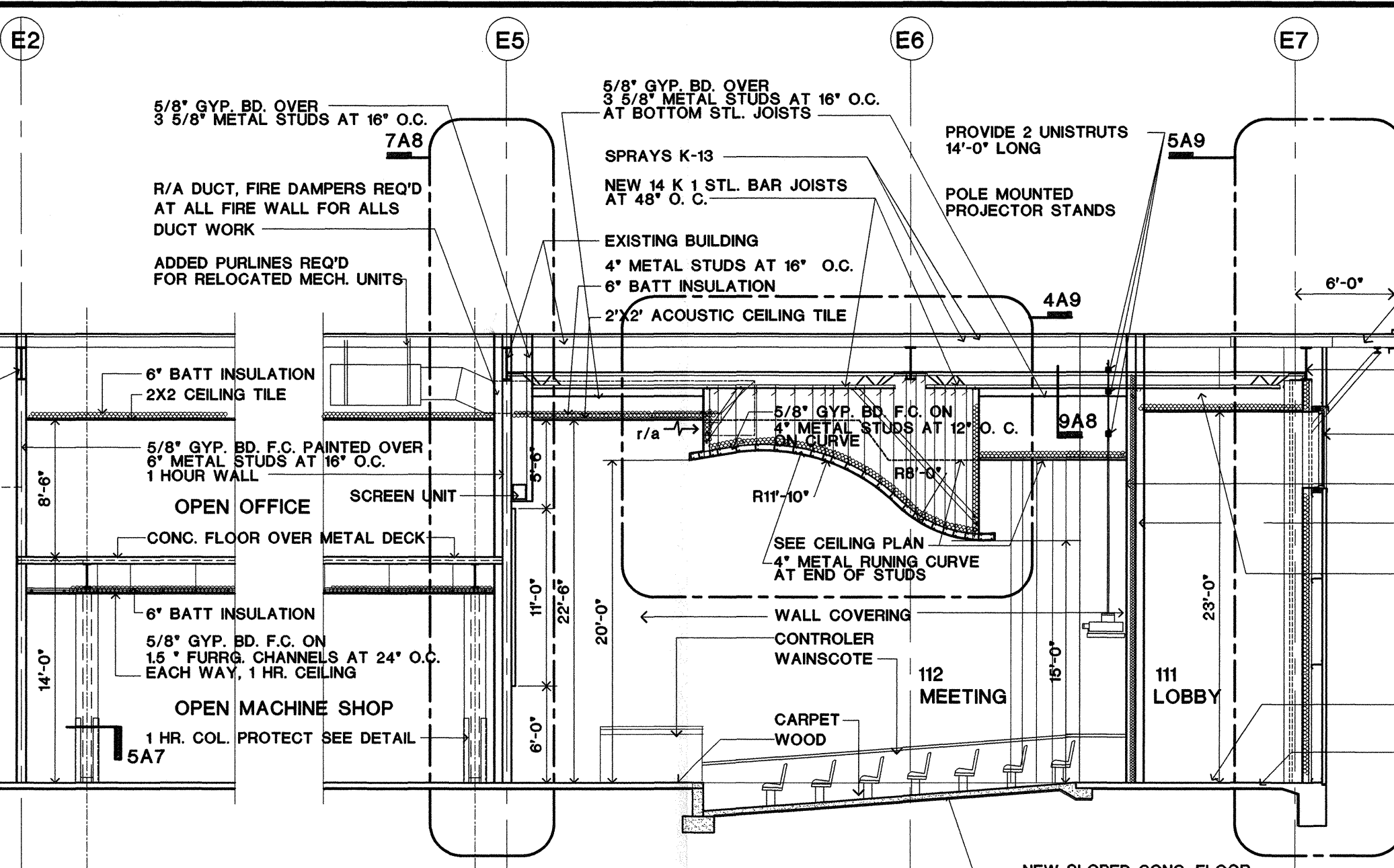


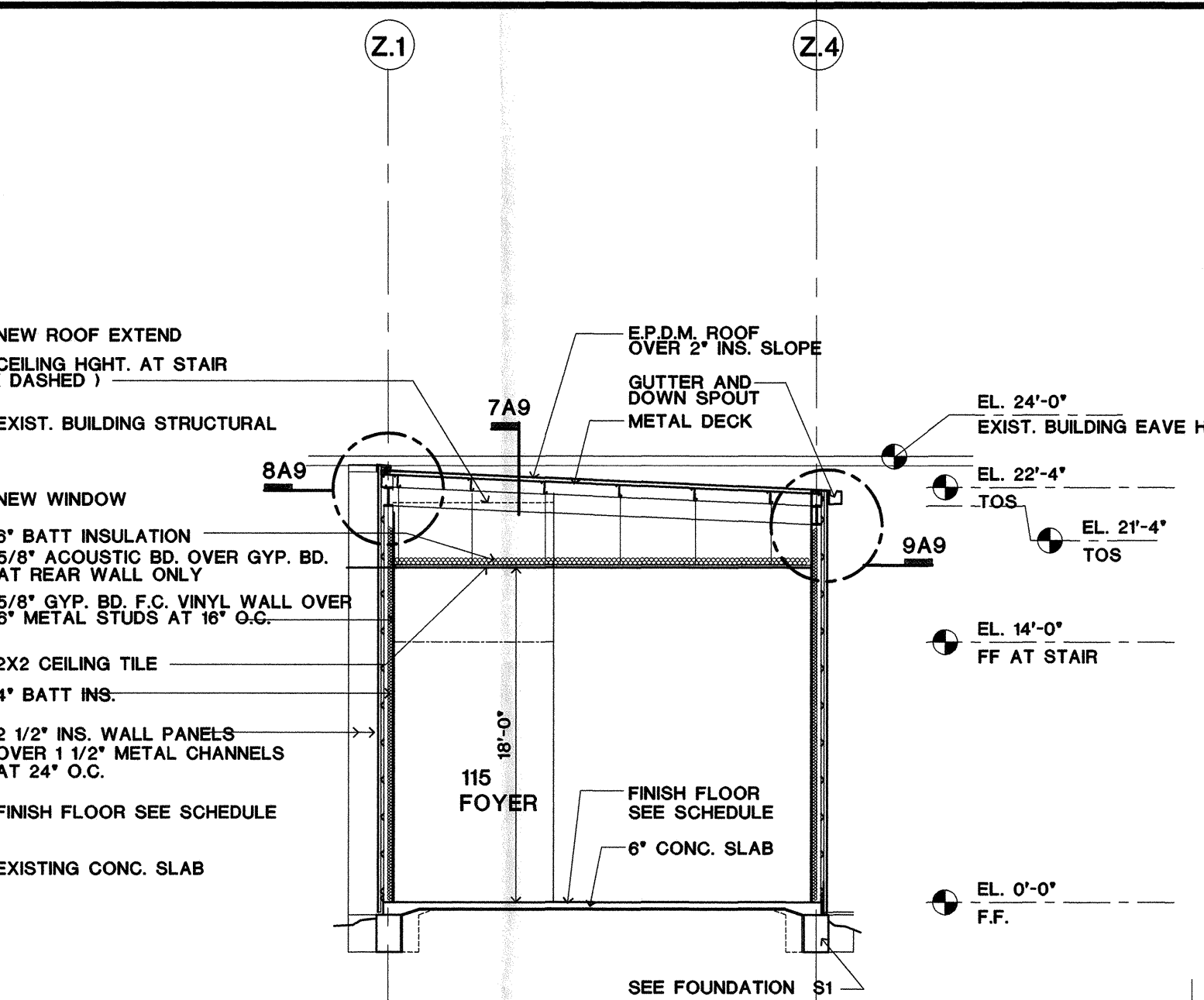
1 BUILDING SECTION
1/8"-1'-0"



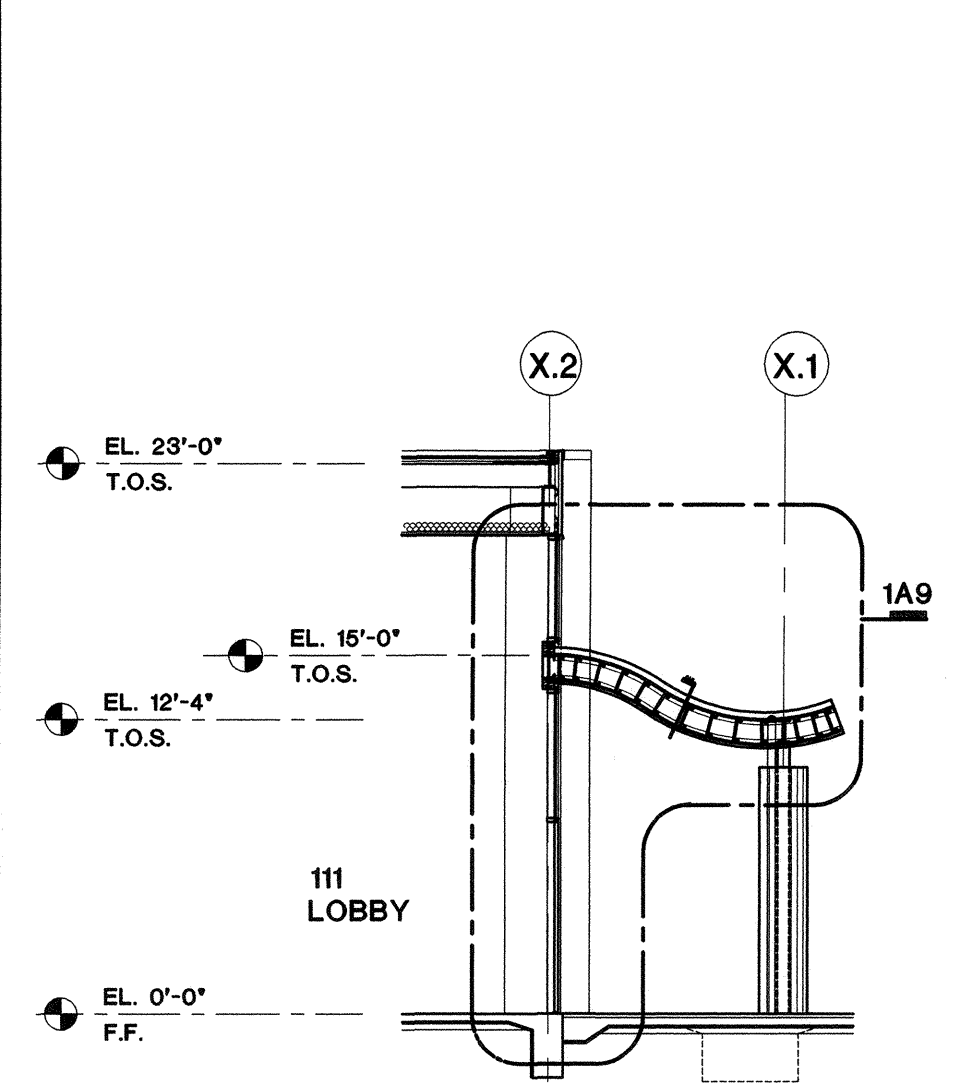
2 BUILDING SECTION
1/8"-1'-0"



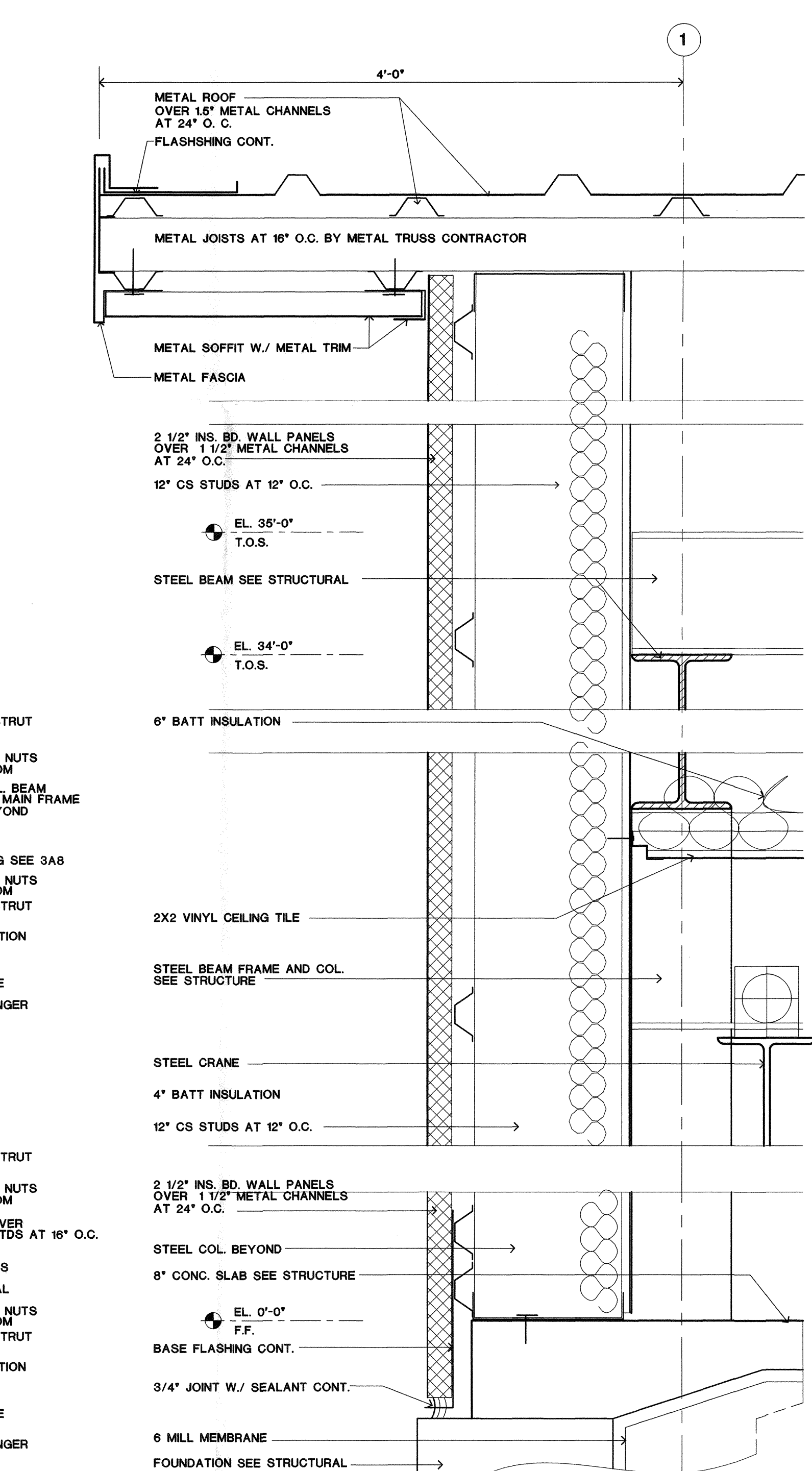
3 BUILDING SECTION
1/8"-1'-0"



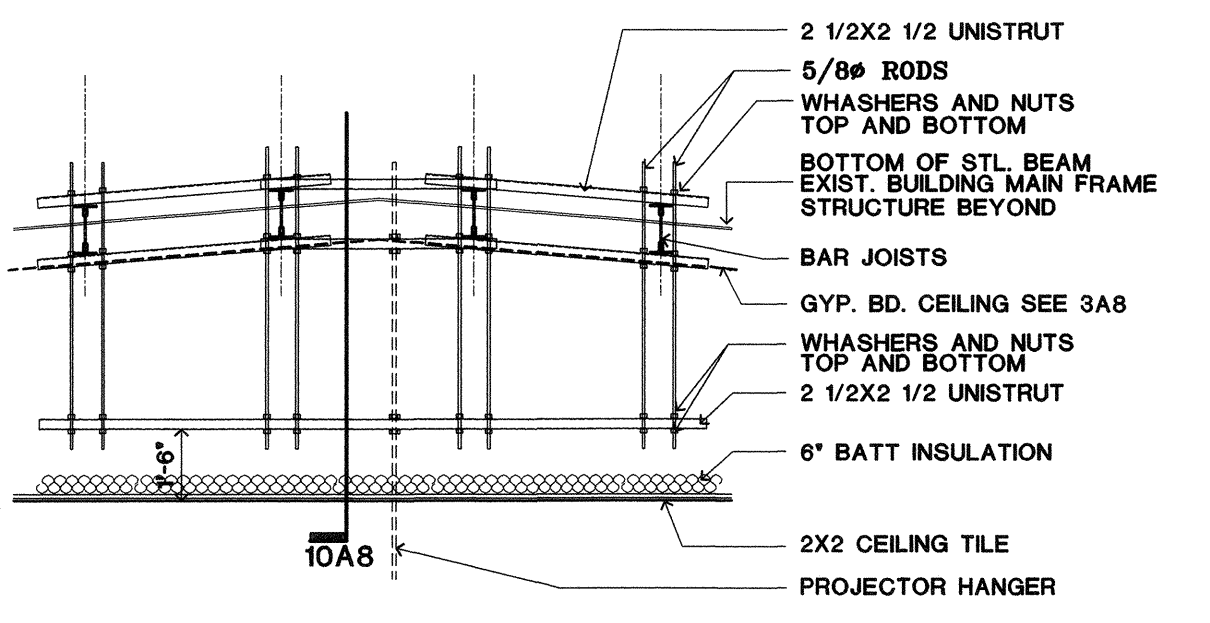
4 BUILDING SECTION
1/8"-1'-0"



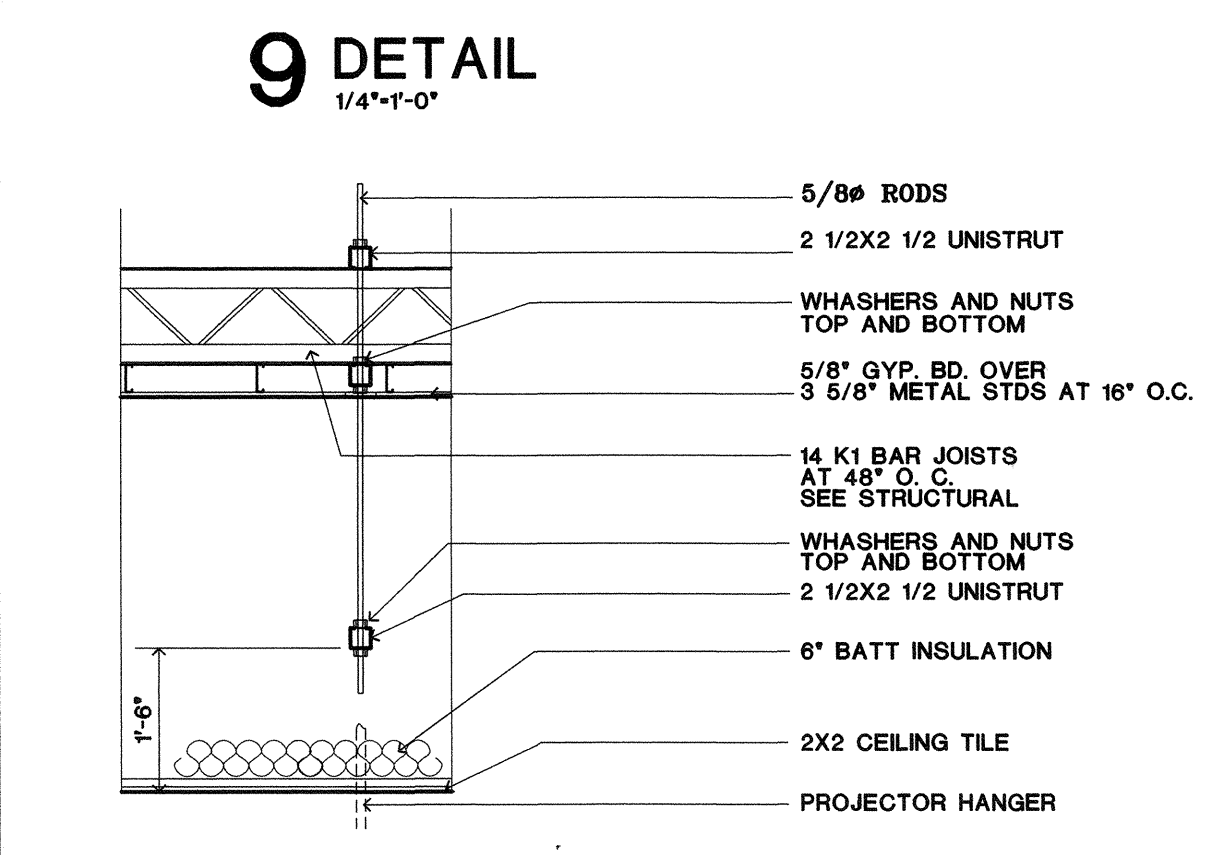
8 BUILDING SECTION
1/8"-1'-0"



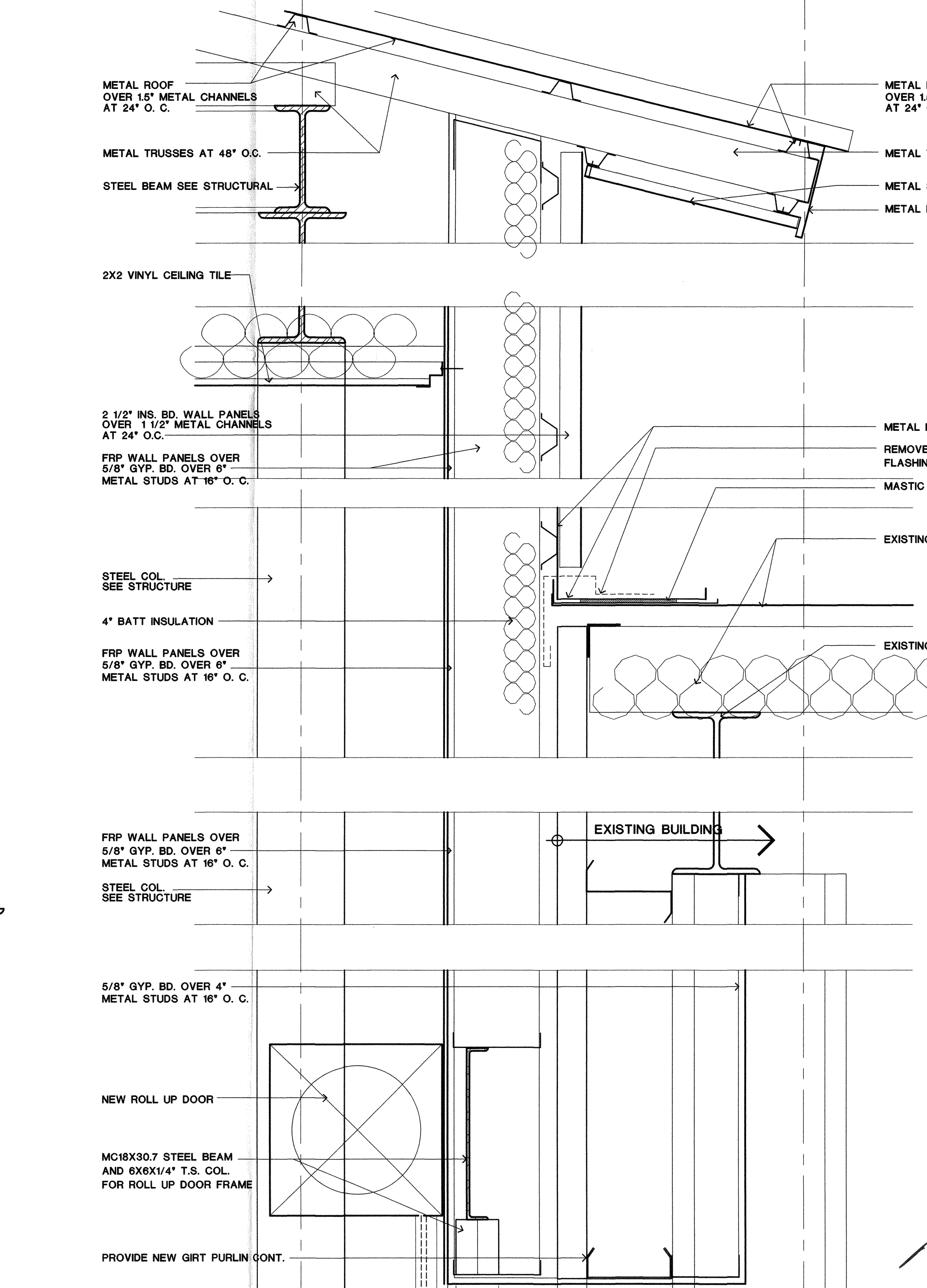
5 DETAIL-W.S.
1 1/2"-1'-0"



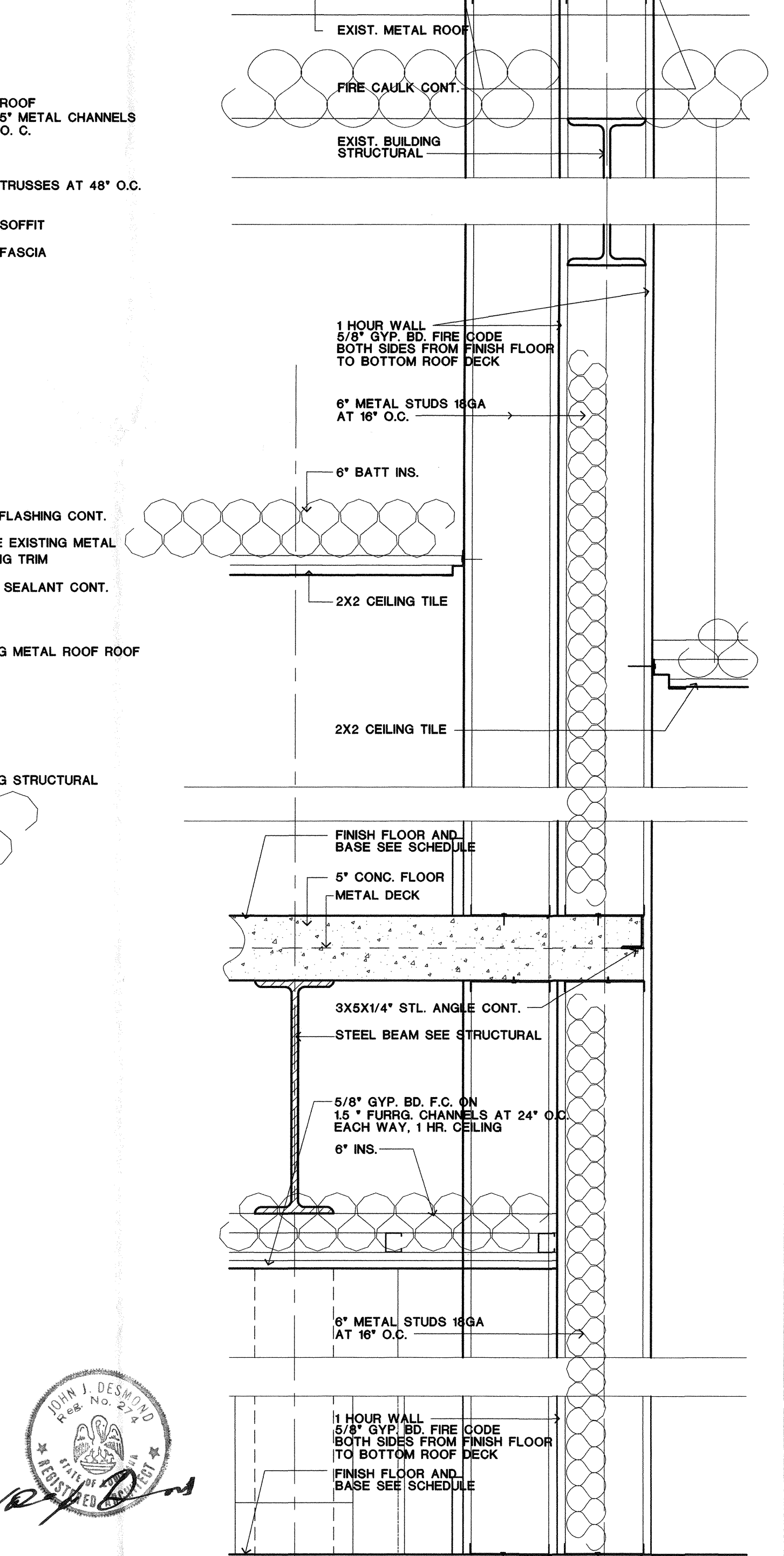
9 DETAIL
1/4"-1'-0"



10 DETAIL
1/2"-1'-0"



6 DETAIL-W.S.
1 1/2"-1'-0"



7 DETAIL-1 HR. WALL
1 1/2"-1'-0"

JOHN DESMOND & ASSOCIATES ARCHITECTS/PLANNERS
 MEMBER AMERICAN INSTITUTE OF ARCHITECTS
 703 LAUREL ST. BATON ROUGE, LA. 70802
 LIGO
 LIVINGSTON, LOUISIANA
 BUILDING SECTIONS - DETAILS LIGO-D000280-00-L
 NEW STAGING BUILDING FOR
 DATE 9-11-2000
 SHEET
A8
 OF