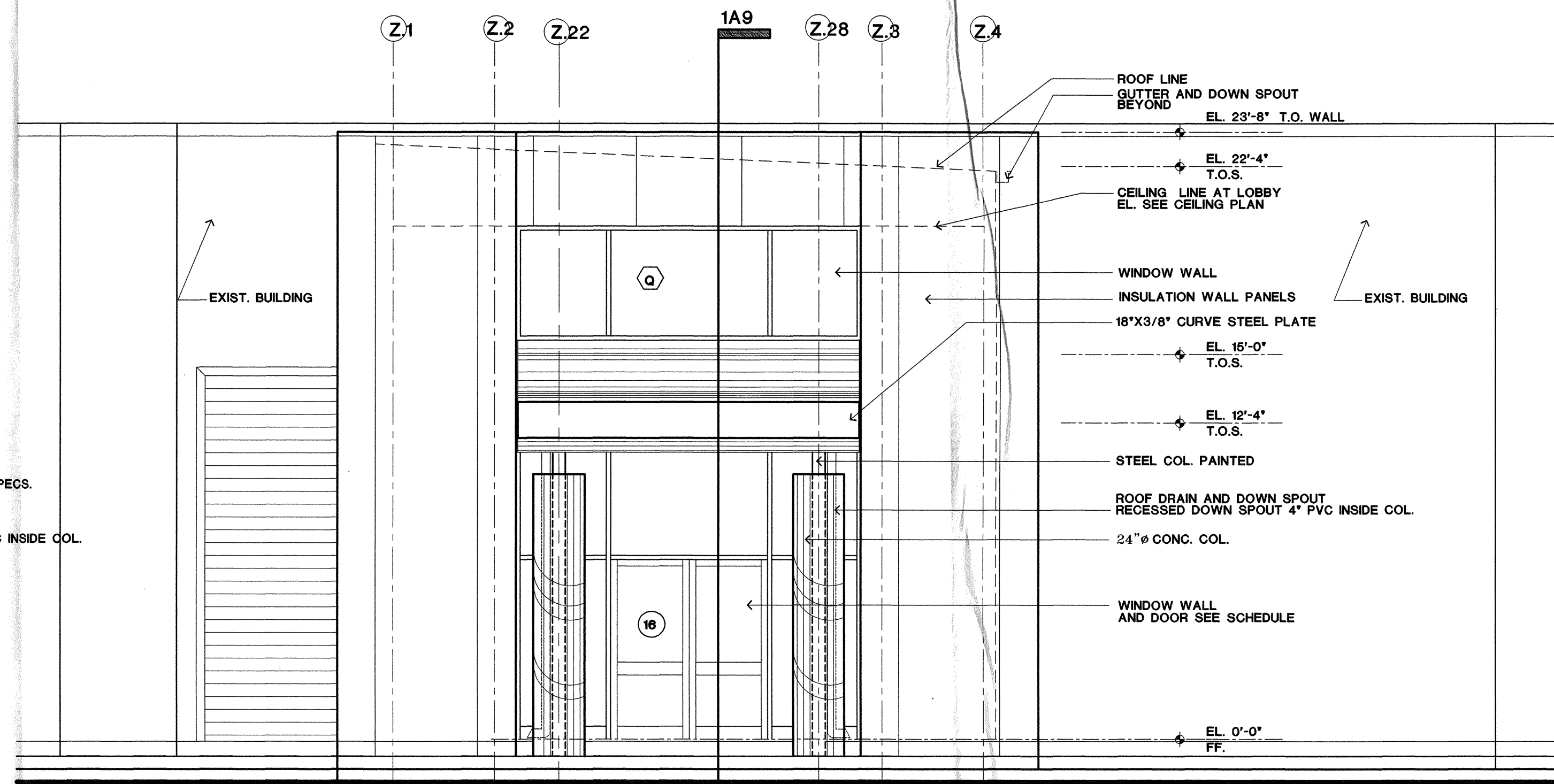


1 PARTIAL WEST ELEVATION
1/4"=1'-0"



2 PARTIAL EAST ELEVATION
1/4"=1'-0"

FINISH SCHEDULE

ROOM	FLOOR	BASE	WALL	CEILING	CEILING HEIGHT	REMARKS
	WOOD	CERAMIC TILE	CERAMIC TILE	EXPOSED STRUCTURE - UNFINISHED	32' - 0"	
	CERAMIC TILE	WOOD	GYPSUM BD. - PAINTED	EXPOSED STRUCTURE - COATED	20' - 0"	
	CONCRETE (SEALED)	RUBBER	WALL BOARD W/ WALL COVERING	PAINTED GYPSUM BOARD ON FURRING	18'-0" - 0"	
	CARPET	BRICK	WALL BOARD W/ PLASTIC LAM.	SUS. ACOUSTIC TILE No. 1	12' - 0"	
	CERAMIC STONE		F.R.P. WALL	SUS. ACOUSTIC TILE No. 2	10' - 0"	
	V. C. T.				9' - 0"	
	SHEET VINYL				8' - 6"	
					7' - 6"	
					VARIES	
LEVEL ONE						
100	FOYER					
101	TOILET					
102	CHANGING					
103	STAIR					
104	LABORATORY					12' - 3" CEILING HGT.
105	BAKE-OUT					
106	HI-BAY AREA					FRP WALL PANELS COVER UP TO 8'-0" A.F.F.
107	MECHANICAL					
108	NEW RECEIVING					EXISTING CEILING TO REMAIN
109	NEW CLEAN ROOM					FRP WALLPANELS COVER UP TO 12'-0" A.F.F.
110	CLEAN STORAGE					FRP WALLPANELS COVER UP TO 12'-0" A.F.F.
111	LOBBY					
112	MEETING					CEILING VARIES, WOOD FLOOR AT PLAT FORM ONLY
113	MEN					
114	WOMEN					
115	FOYER					
116	STAIR					
117	STAIR					SEE CEILING PLAN 1RST. AND 2ND. FLOOR PLAN FOR HGT.
118	MACHINE SHOP					
LEVEL TWO						
200	OPEN OFFICE					
201	TOILET					
202	CLOSET					
203	CLOSET					
204	OPEN OFFICE					SEE CEILING PLAN
205	WOMEN					
206	MEN					
207	JANITOR					
208	BRIDGE					GYP. BD. ATTACHED TO EXISTING STRUCTURE
209	FOYER					

