

1

2

3

4

NOTES: (UNLESS OTHERWISE SPECIFIED)
 1. FABRICATION INSTRUCTIONS FOR THIS ASSEMBLY ARE DETAILED IN LIGO-E000388.

REV	DATE	DRAWN BY	CHECKED	DCC	DCN/DESCRIPTION
A	10-27-00	J.Romie			E000482/INITIAL RELEASE
B	01-16-01	J.Romie			E010013/CHANGE NOTES

A

A

B

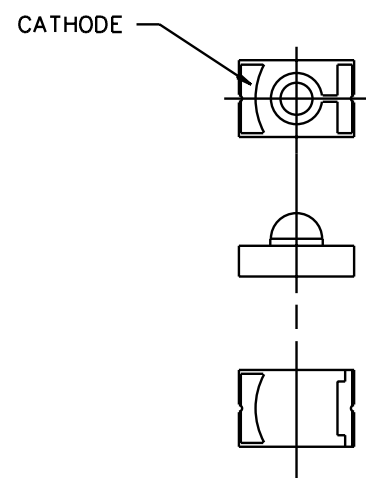
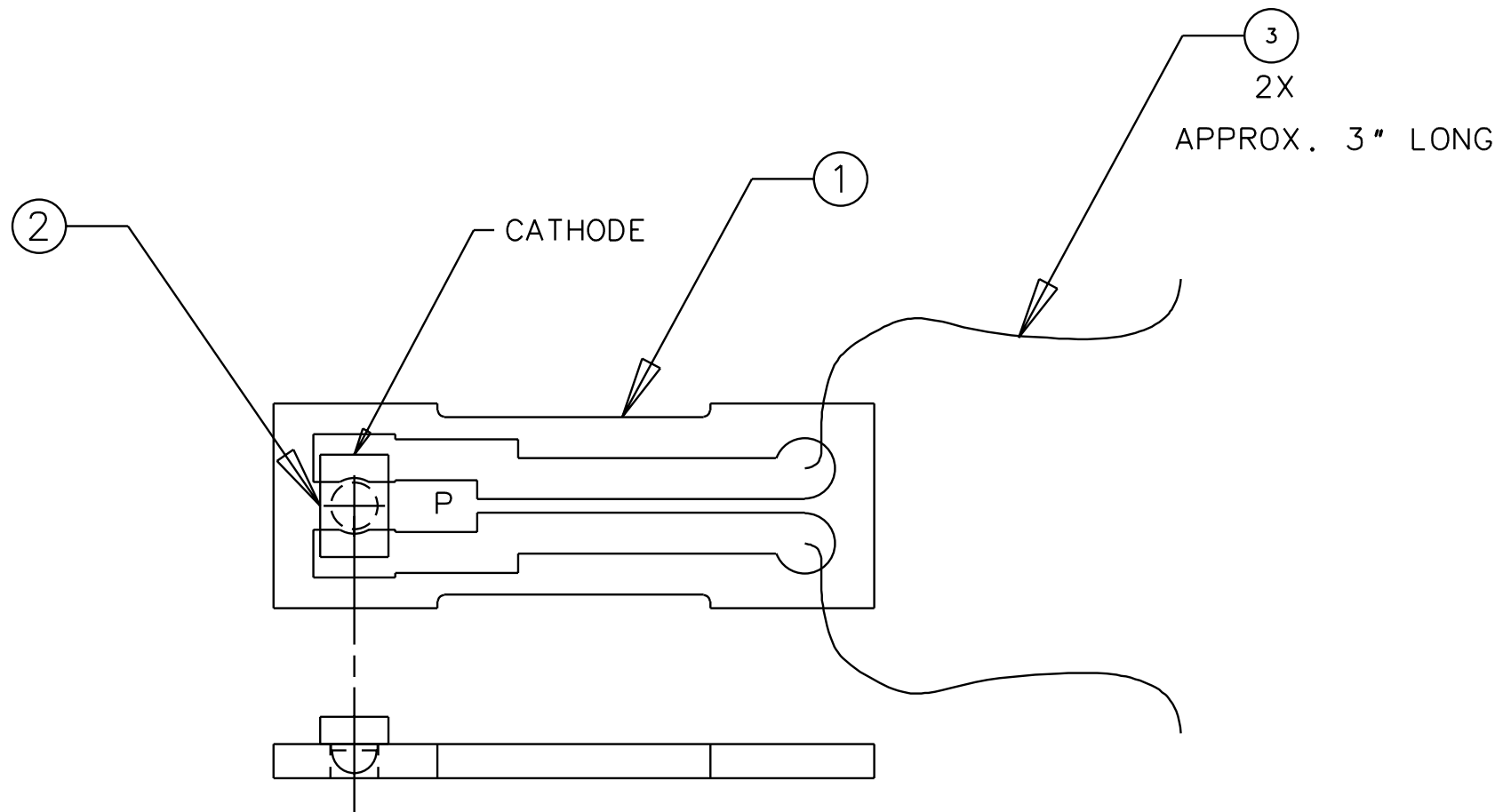
B

C

C

D

D



HONEYWELL PHOTODIODE SMD-2420-001

QTY REQD	PART OR IDENTIFYING NO	NOMENCLATURE OR DESCRIPTION	MATERIAL SPECIFICATION	ITEM NO
				6
				5
A/R	MWS WIRE P/N 32 HML	KAPTON WIRE		4
1	HONEYWELL P/N SMD-2420-001	SURFACE MOUNT PHOTODIODE		3
ALT	D000205	ALUMINA CIRCUIT BD., LONG, PD.		2
1	D000195	ALUMINA CIRCUIT BOARD, PD.		1

UNLESS OTHERWISE SPECIFIED DIMENSIONS ARE IN INCHES TOLERANCES ARE:		APPROVALS		DATE	LIGO CALIFORNIA INSTITUTE OF TECHNOLOGY MASSACHUSETTS INSTITUTE OF TECHNOLOGY	
FRACTIONS	DECIMALS	DRAWN	J. Romie	5/00	TITLE	
0.XX=±0.01	0.XXX=±0.005	CHECKED			CIRCUIT BOARD ASSEMBLY, PHOTODIODE	
0.XXX=±0.005	ANGLES=±0.5°				DWC NO. D000244	
DO NOT SCALE DRAWING					SCALE 4/1	REV B
NEXT ASSEMBLY	D000069, D000180	MATERIAL				SHEET 1 OF 1
FILE LOCATION	/home/dcc/docs/D000244.pdf	FINISH				

1

2

3

4