

1

2

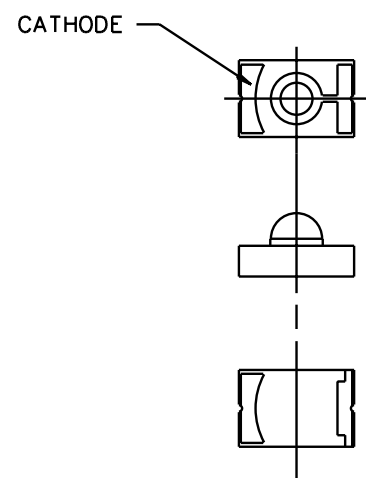
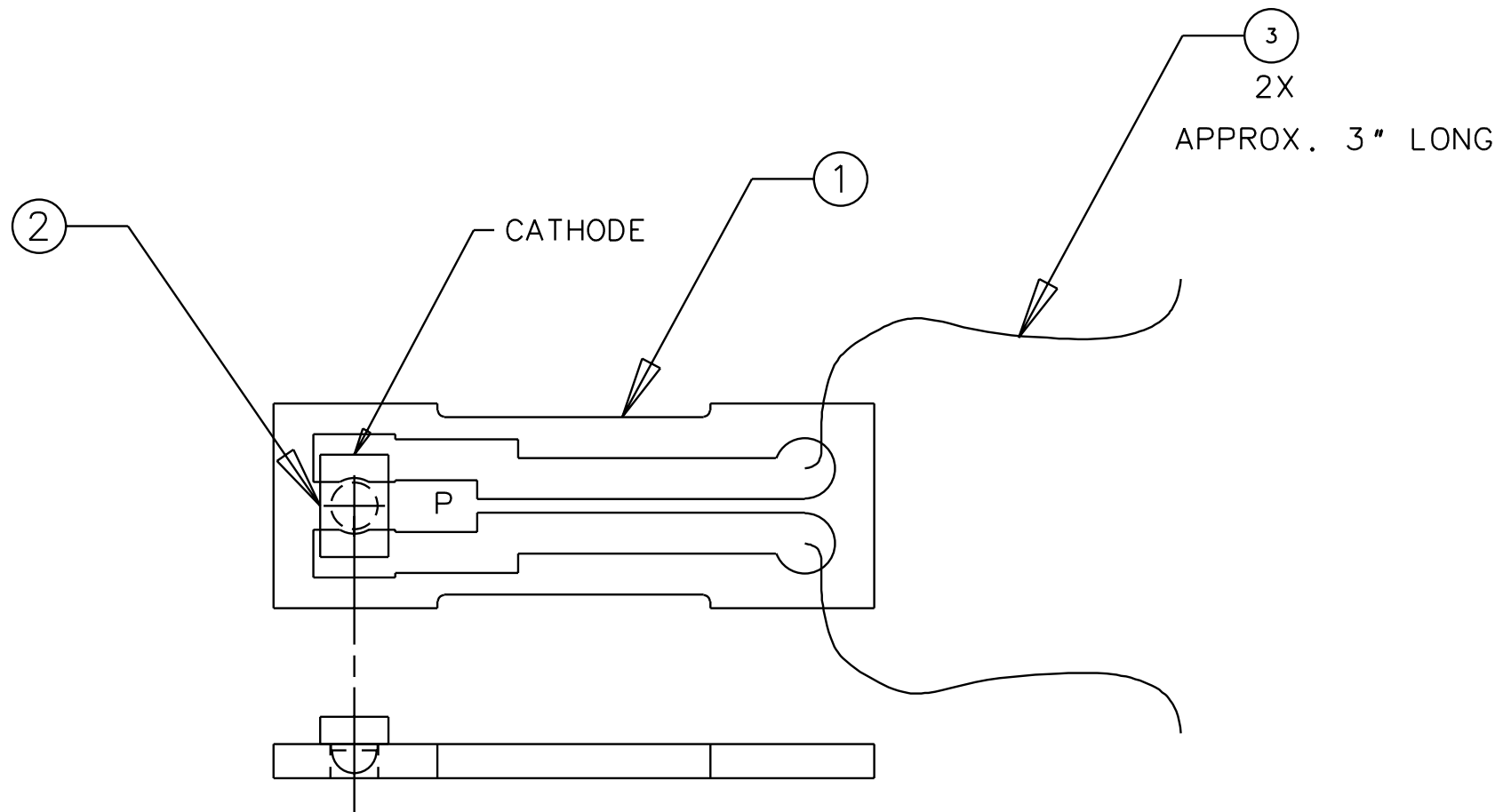
3

4

NOTES: (UNLESS OTHERWISE SPECIFIED)

- 1. CLEAN ITEM 1 OR 2 THOROUGHLY BEFORE SOLDERING. DEFLUX BOARD.
- 2. SOLDER ITEM 3 TO ITEM 1 OR 2 IN ORIENTATION SHOWN.
- 3. SOLDER 3" SECTIONS OF ITEM 4 TO ITEM 1 OR 2.
- 4. MAINTAIN PRESSURE ON ITEM 3 DURING SOLDERING TO REDUCE AMOUNT OF SOLDER UNDER PADS.
- 5. USE PRESSURE ON ITEM 3 DURING SOLDERING TO MAINTAIN PARALLEL POSITION OF ITEM 3 TO EDGES OF CIRCUIT BOARD, ITEM 1 OR 2.

REV	DATE	DRAWN BY	CHECKED	DCC	DCN/DESCRIPTION
A	10-27-00	J. Romie			E000482/INITIAL RELEASE



HONEYWELL PHOTODIODE SMD-2420-001

QTY REQD	PART OR IDENTIFYING NO	NOMENCLATURE OR DESCRIPTION	MATERIAL SPECIFICATION	ITEM NO
				6
				5
A/R	MWS WIRE P/N 32 HML	KAPTON WIRE		4
1	HONEYWELL P/N SMD-2420-001	SURFACE MOUNT PHOTODIODE		3
ALT	D000205	ALUMINA CIRCUIT BD., LONG, PD.		2
1	D000195	ALUMINA CIRCUIT BOARD, PD.		1

UNLESS OTHERWISE SPECIFIED DIMENSIONS ARE IN INCHES TOLERANCES ARE:		APPROVALS		DATE	LIGO CALIFORNIA INSTITUTE OF TECHNOLOGY MASSACHUSETTS INSTITUTE OF TECHNOLOGY	
FRACTIONS	DECIMALS	DRAWN	J. Romie	5/00	TITLE	
0.XX=±0.01	0.XXX=±0.005	CHECKED			CIRCUIT BOARD ASSEMBLY, PHOTODIODE	
ANGLES=±0.5°					DWC NO. D000244	
DO NOT SCALE DRAWING					REV	A
NEXT ASSEMBLY	D000069, D000180	MATERIAL			SCALE	4/1
FILE LOCATION	/home/dcc/docs/D000244.pdf	FINISH			SHEET	1 OF 1