

1

2

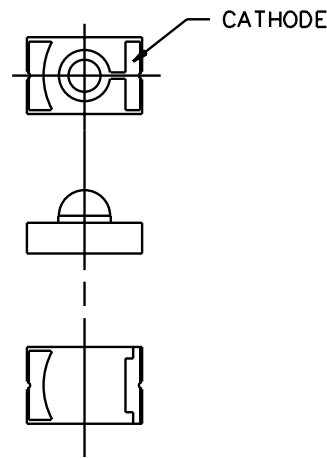
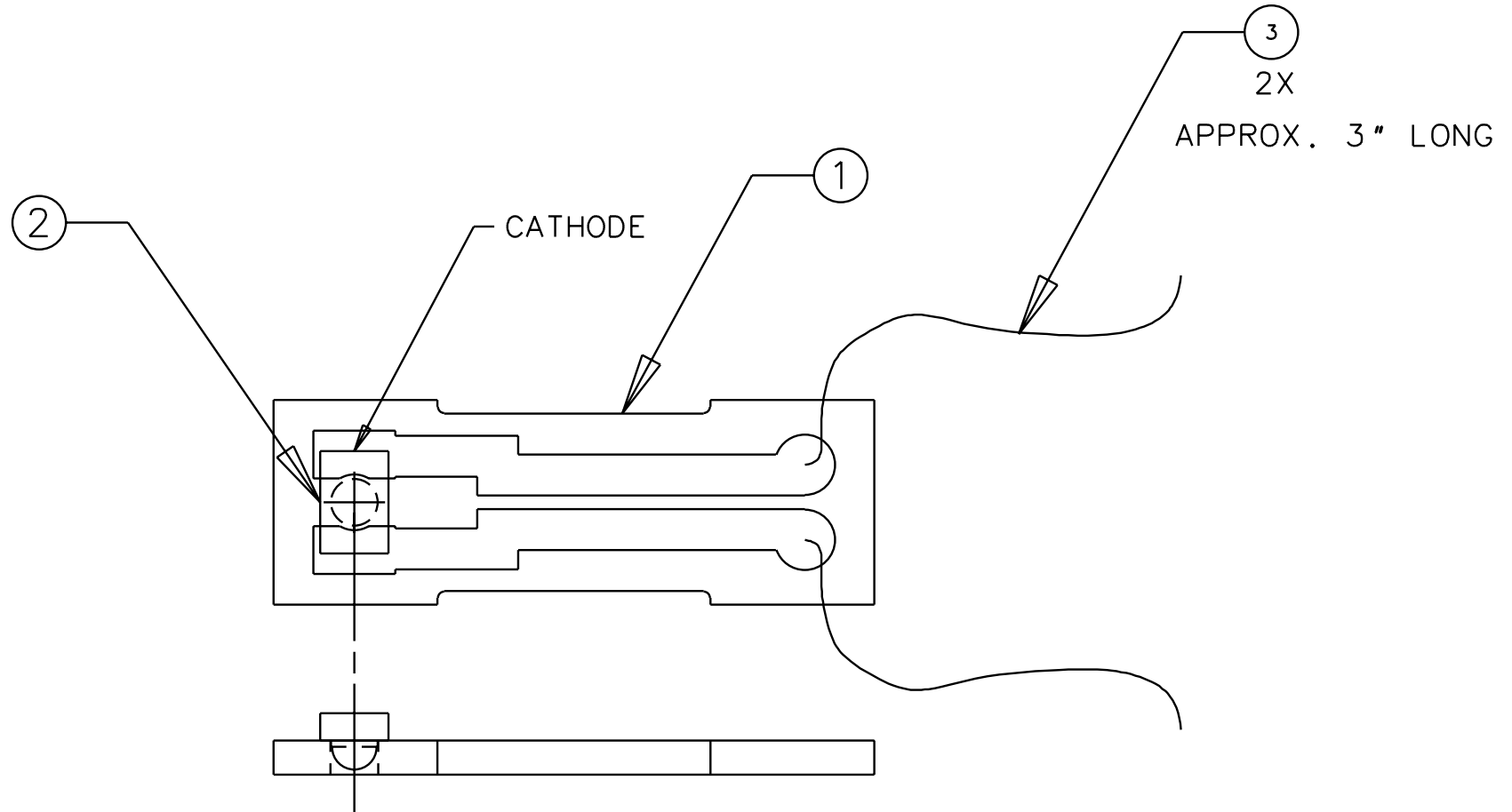
3

4

NOTES: (UNLESS OTHERWISE SPECIFIED)

1. CLEAN ITEM 1 OR 2 THOROUGHLY BEFORE SOLDERING. DEFLUX BOARD.
2. SOLDER ITEM 3 TO ITEM 1 OR 2 IN ORIENTATION SHOWN.
3. SOLDER 3" SECTIONS OF ITEM 4 TO ITEM 1 OR 2.
4. MAINTAIN PRESSURE ON ITEM 3 DURING SOLDERING TO REDUCE AMOUNT OF SOLDER UNDER PADS.
5. USE PRESSURE ON ITEM 3 DURING SOLDERING TO MAINTAIN PARALLEL POSITION OF ITEM 3 TO EDGES OF CIRCUIT BOARD, ITEM 1 OR 2.

REV	DATE	DRAWN BY	CHECKED	DCC	DCN/DESCRIPTION
A	10-27-00	J.Romie			E000482/INITIAL RELEASE



HONEYWELL LED SME-2470-001

QTY REQD	PART OR IDENTIFYING NO	NOMENCLATURE OR DESCRIPTION	MATERIAL SPECIFICATION	ITEM NO
				6
				5
A/R	MWS WIRE P/N 32 HML	KAPTON WIRE		4
1	HONEYWELL P/N SME-2470-001	SURFACE MOUNT LED		3
ALT	D000204	ALUMINA CIRCUIT BD., LONG, LED		2
1	D000194	ALUMINA CIRCUIT BOARD, LED		1

UNLESS OTHERWISE SPECIFIED DIMENSIONS ARE IN INCHES TOLERANCES ARE:		APPROVALS		DATE	CALIFORNIA INSTITUTE OF TECHNOLOGY MASSACHUSETTS INSTITUTE OF TECHNOLOGY	
FRACTIONS	DECIMALS	DRAWN	J. Romie	5/00	TITLE	
0.XX=±0.01	0.XXX=±0.005	CHECKED			CIRCUIT BOARD ASSEMBLY, LED	
ANGLES=±0.5°					DWC NO. D000243	
DO NOT SCALE DRAWING					REV	A
NEXT ASSEMBLY	D000069, D000180	MATERIAL			SCALE 4/1	
FILE LOCATION	/home/dcc/docs/D000243.pdf	FINISH			SHEET 1 OF 1	