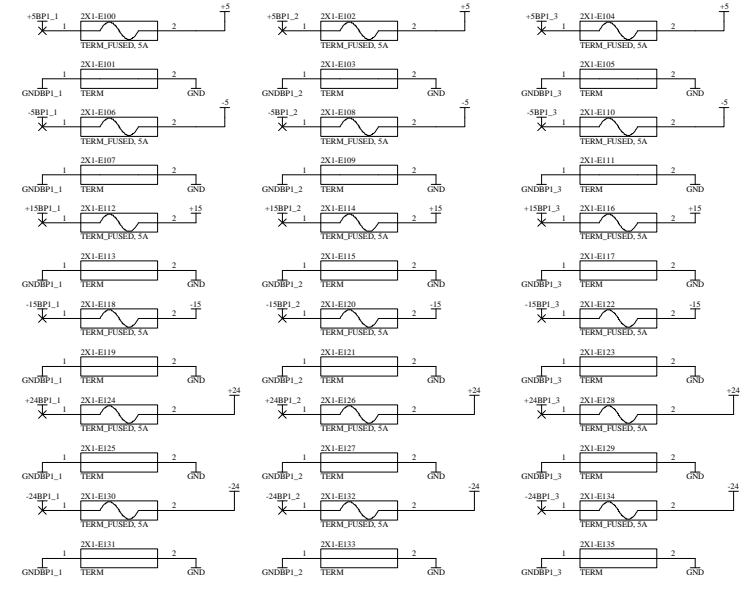
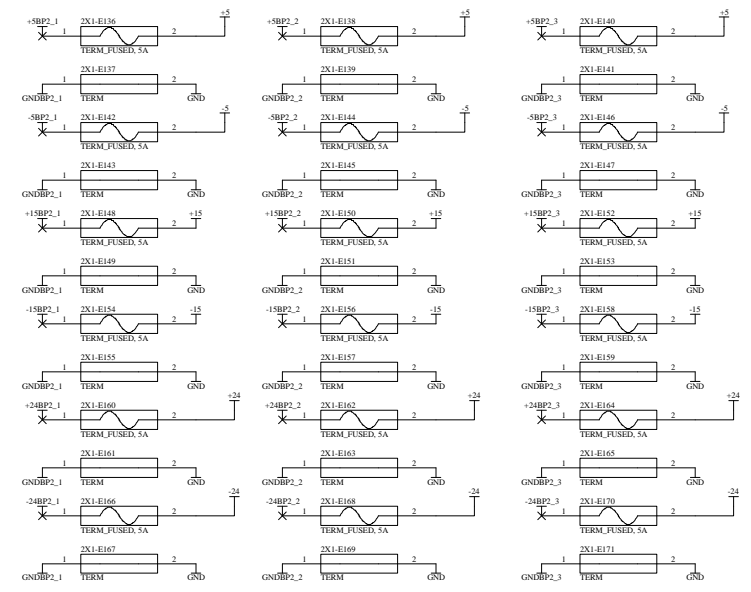


Note:  
Power Connections for Eurocard modules are made through the backplane and are designated as XXBP1. Bulk power supply connections to the eurocard backplane lugs are designated as +XX.  
Row E DIN Rail is mounted inside rack 2X1.

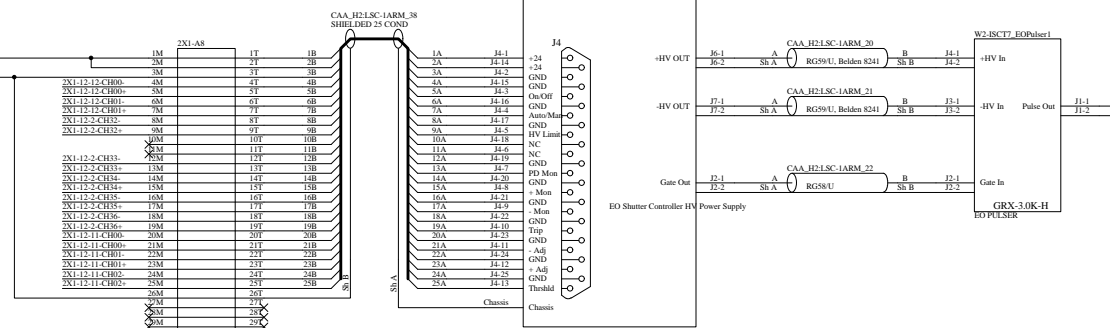
### EuroCard Crate 1 Power Supply Connections



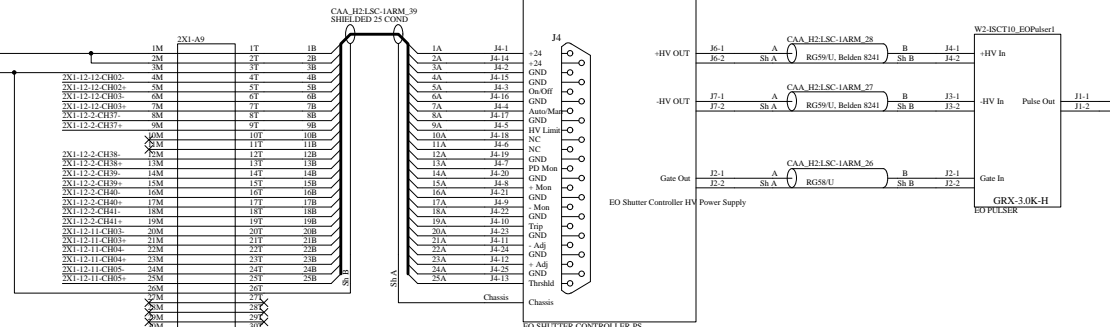
### EuroCard Crate 2 Power Supply Connections

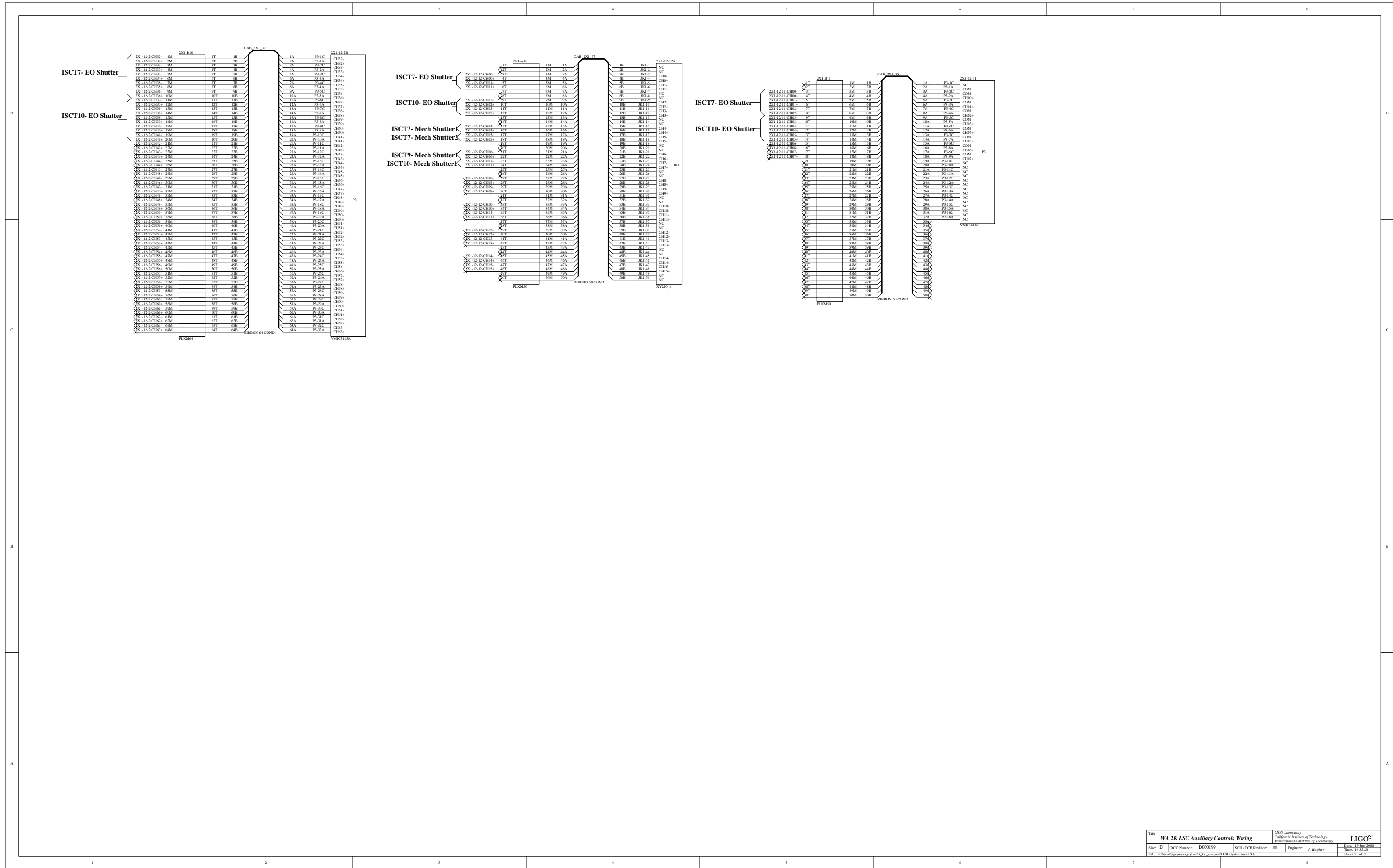


Note:  
Signal connections to  
2X1-12-12 XY220 JK1, Sheet 3  
2X1-12-2 3113 P3, Sheet 3  
2X1-12-11 4116 P3, Sheet 3



Note:  
Signal connections to  
2X1-12-12 XY220 JK1, Sheet 3  
2X1-12-2 3113 P3, Sheet 3  
2X1-12-11 4116 P3, Sheet 3





1

2

3

4

5

6

D

D

wa2kLSCSystemAux1  
wa2kLSCSystemAux1.Sch



wa2kLSCSystemAux2  
wa2kLSCSystemAux2.Sch



wa2kLSCSystemAux3  
wa2kLSCSystemAux3.Sch



C

C

B

B

A

A

Title		<i>LIGO Laboratory</i> California Institute of Technology Massachusetts Institute of Technology		
<b>WA 2K LSC Auxiliary Controls Wiring</b>				
Size: B	DCC Number: D000199	SCH / PCB Revision: 00	Engineer: J. Heefner	Date: 13-Jun-2000
File: K:\hcad\ligo\users\jay\wa2k_lsc_aux\wa2kLSCSystemAux.prj				Time: 14:34:53
				Sheet 0 of 3

1

2

3

4

5

6