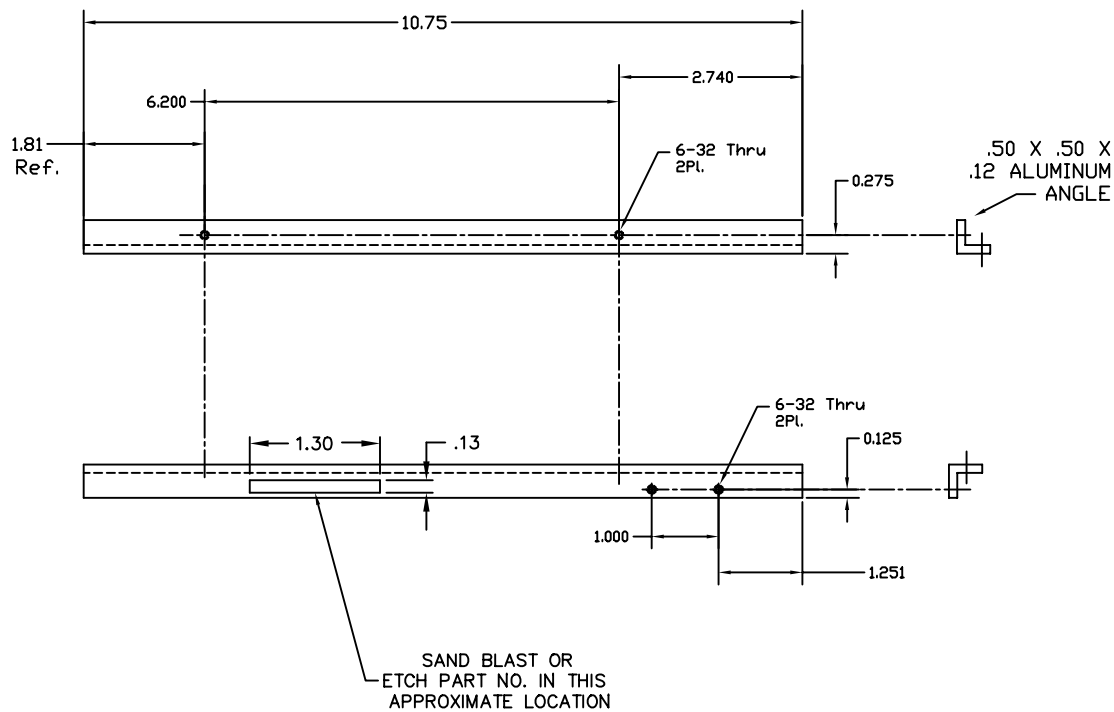


NOTES: (UNLESS OTHERWISE SPECIFIED)
 Lubricants
 Liquids containing hydrocarbons or other contaminants, other than the machining fluids specified herein, shall not be allowed to come into contact with suspension material at any time. All machining fluids shall be water soluble and free of sulfur, chlorine and silicones such as Cincinnati Milacron's Cimtech 410 (stainless steel).

Identification: Serial Number
 A serial number shall be etched, or scribbled on the part see note drawing note.

Serial Number Format
 The Serial number shall be of the format D99xxxxxx

Example: D990021-A-001
 The drawing number, the revision number, The sequential part number



RIGHT HAND BOTTOM ANGLE HAM2

REF. MAKE 1 PER ASSEMBLY

REF: QTY		PART or DRWG No.		DESCRIPTION				PARTS and MATERIAL LIST		MATERIAL	
										LIGO CALIFORNIA INSTITUTE OF TECHNOLOGY MASSACHUSETTS INSTITUTE OF TECHNOLOGY	
										RIGHT HAND BOTTOM ANGLE HAM2 TABLE BEAM DUMP	
XXX	XXX	MATERIAL: ALUMINUM	HEAT TREAT: -	FINISH: -			A	NEW-RELEASE	LIGO-E000209-00-0	KENN	4/19/00
DRWG. NO.	DESCRIPTION	USED DRW: XXX	NEXT ASSY: XXX	REV	DESCRIPTION	DCN NUMBER	APPR'D	CHECK	DRWN	DATE	SCALE: 1:1
7	REFERENCE DRAWINGS	6	5	4	3	2	1	1 OF 1		1 OF 1	