

6

5

4

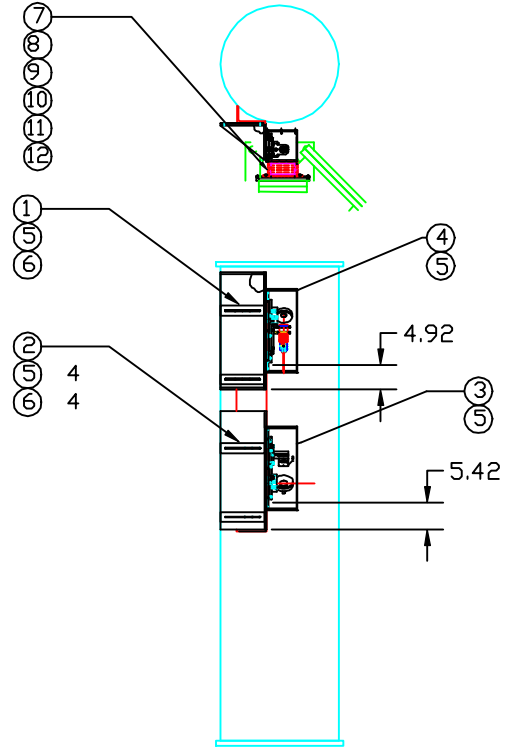
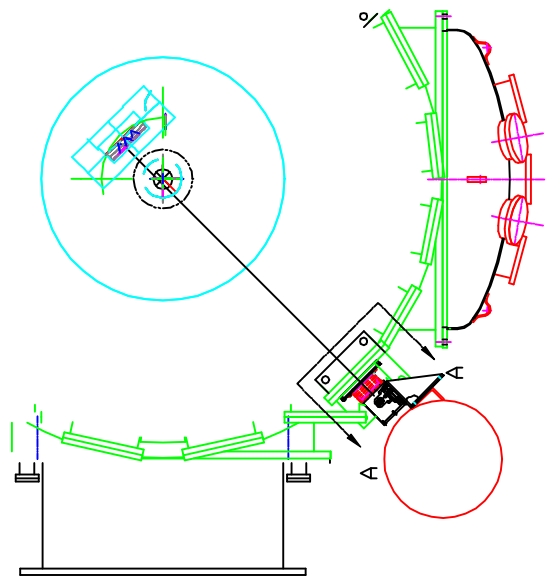
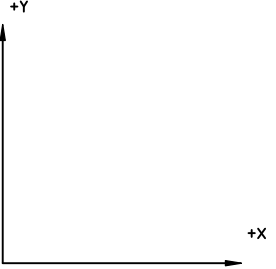
3

2

1

NOTES:

WBSC2



SECTION A-A

12	2	45945K77	HOSE CLAMP	MCMaster CARR
11	1	CT-6	RUBBER BELLOWS	
10	1	D970206	SEAL MOUNT, VIEWPORT PLATE	
9	1	D970217	VIEWPORT PLATE	
8	1	D970216	VIEWPORT ADAPTER	
7	1	D970207	SEAL MOUNT	
6	8	98017A155	1/4 FLAT WASHER	MCMaster CARR
5	12	92196A539	1/4-20 x .625 SHCS	MCMaster CARR
4	1	D970102	10X BEAM EXPANDER, A5(BS) TX	
3	1	D980479	PHOTODIODE ASSEMBLY A6 (BS) RX	
2	1	D980243	OPTICAL LEVER WEDGEPLATE, BSC2-NE-BOT	
1	1	D980242	OPTICAL LEVER WEDGEPLATE, BSC2-NE-TOP	

REF	QTY	PART or DRWG No.	CDS	MATERIAL							
PARTS and MATERIAL LIST											
LIGU CALIFORNIA INSTITUTE OF TECHNOLOGY MASSACHUSETTS INSTITUTE OF TECHNOLOGY											
BSC2 OPTICAL LEVER ASSEMBLY											
A RELEASE			SMITH	3/00							
00	PRE-RELEASE		SMITH	8/99							
REV	DESCRIPTION	DCC	SYS	DET	CBS	VE	CC	BT	CHECK	DRWN	DATE
ISSUE DESCRIPTION											
SCALE FULL SHEET 1 of 1											

UNLESS OTHERWISE SPECIFIED
 DIMENSIONS ARE IN FEET (cm)
 TOLERANCES: FRACTIONAL ±1/16(36) FINISHED SURFACE RMS
 ANGULAR ±1° BREAK CORNERS
 TWO PLACE DECIMAL ±.01(025) REMOVE ALL BURRS
 THREE PLACE DECIMAL ±.005(.013)

MATERIAL:	HEAT TREAT:	FINISH:
USED ON:-	NEXT ASS'Y:-	

DWG. NO.	DESCRIPTION
	REFERENCE DRAWINGS

6

5

4

3

2

1