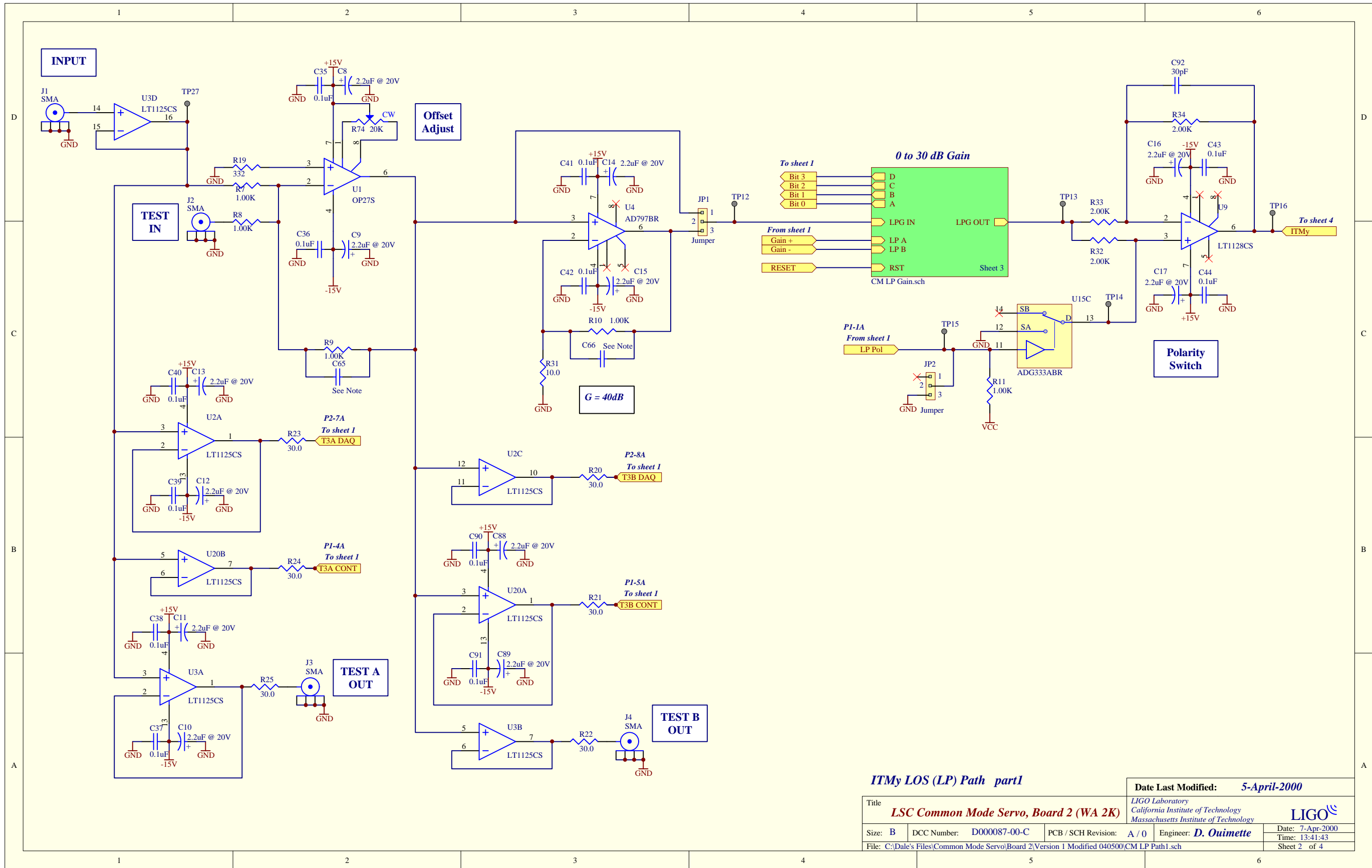


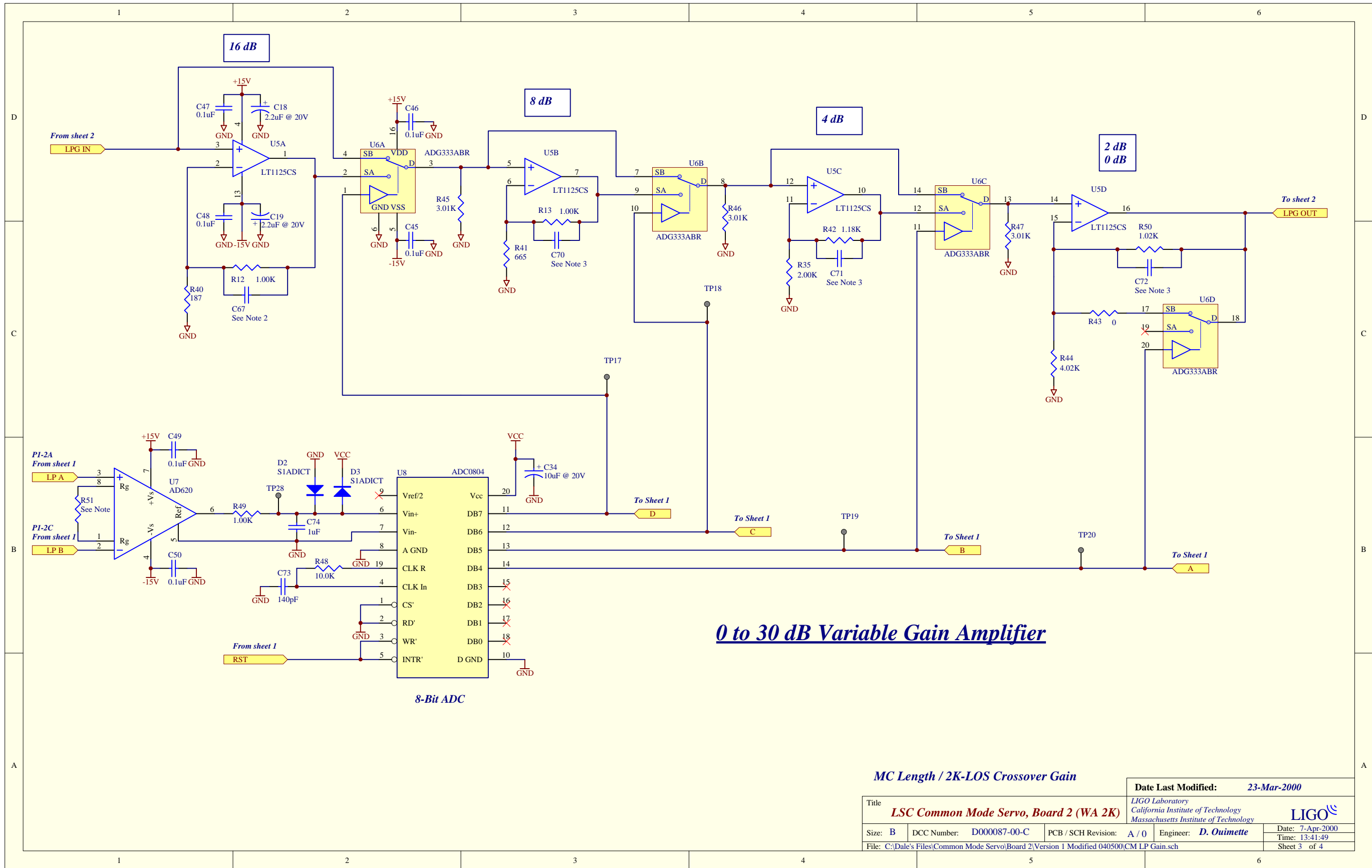
Title		Date Last Modified: 5-April-2000	
LSC Common Mode Servo, Board 2 (WA 2K)		LIGO Laboratory California Institute of Technology Massachusetts Institute of Technology	
Size: B	DCC Number: D000087-01-C	PCB / SCH Revision: A / 1	Engineer: D. Ouimette
File: C:\Dale's Files\Common Mode Servo\Board 2\Version 1 Modified 040500\CM Servo2.pri		Date: 7-Apr-2000	Time: 13:41:34
		Sheet 1 of 4	



ITMy LOS (LP) Path part1

Date Last Modified: 5-April-2000

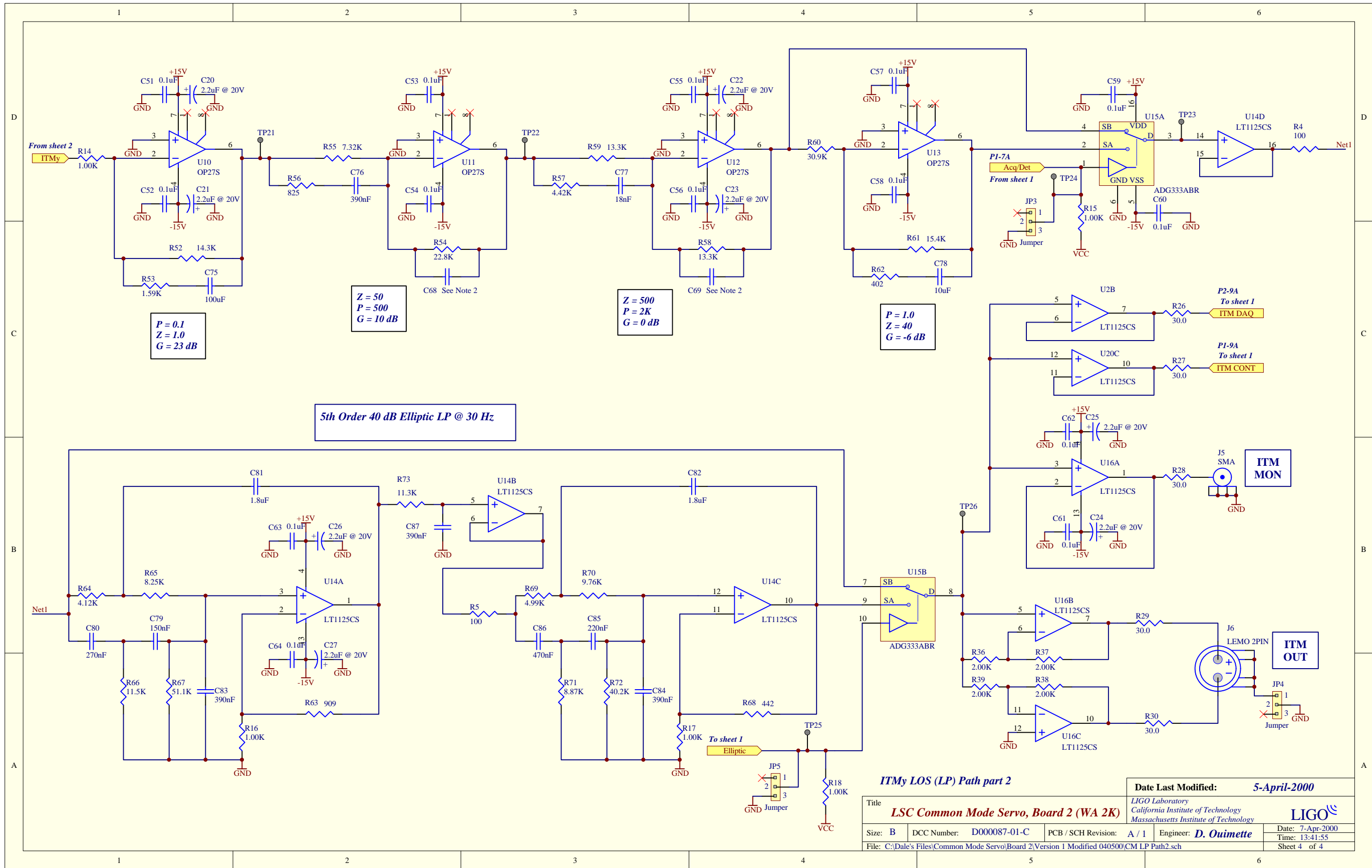
Title			LIGO Laboratory California Institute of Technology Massachusetts Institute of Technology		LIGO
Size: B			DCC Number: D000087-00-C	PCB / SCH Revision: A / 0	
File: C:\Dale's Files\Common Mode Servo\Board 2\Version 1 Modified 040500\CM LP Path1.sch					Date: 7-Apr-2000 Time: 13:41:43
					Sheet 2 of 4



0 to 30 dB Variable Gain Amplifier

MC Length / 2K-LOS Crossover Gain

Title			Date Last Modified: 23-Mar-2000	
LSC Common Mode Servo, Board 2 (WA 2K)			LIGO Laboratory California Institute of Technology Massachusetts Institute of Technology	
Size: B	DCC Number: D000087-00-C	PCB / SCH Revision: A / 0	Engineer: D. Ouimette	Date: 7-Apr-2000
File: C:\Dale's Files\Common Mode Servo\Board 2\Version 1 Modified 040500\CM LP Gain.sch			Time: 13:41:49	
				Sheet 3 of 4



5th Order 40 dB Elliptic LP @ 30 Hz

P = 0.1
Z = 1.0
G = 23 dB

Z = 50
P = 500
G = 10 dB

Z = 500
P = 2K
G = 0 dB

P = 1.0
Z = 40
G = -6 dB

ITMy LOS (LP) Path part 2

Title		Date Last Modified: 5-April-2000	
LSC Common Mode Servo, Board 2 (WA 2K)		LIGO Laboratory California Institute of Technology Massachusetts Institute of Technology	
Size: B	DCC Number: D000087-01-C	PCB / SCH Revision: A / 1	Engineer: D. Ouimette
File: C:\Dale's Files\Common Mode Servo\Board 2\Version 1 Modified 040500\CM LP Path2.sch		Date: 7-Apr-2000	Time: 13:41:55
		Sheet 4 of 4	