

4

3

2

1

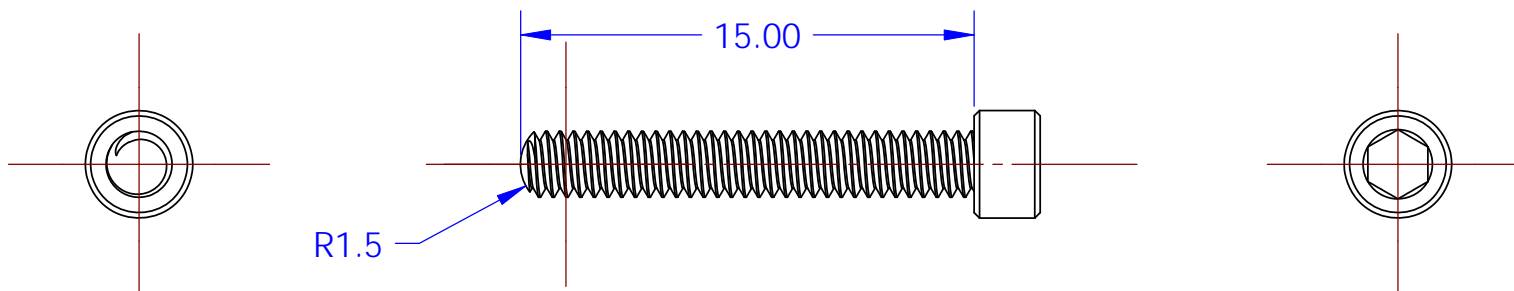
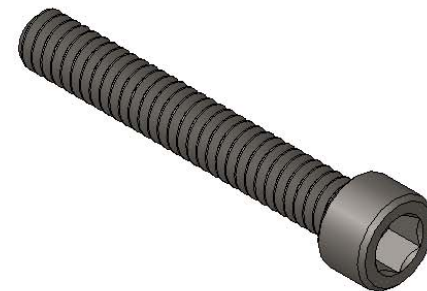
NOTES CONTINUED:

⑤ PART MADE FROM #2-56 x 5/8" STAINLESS STEEL SOCKET HEAD CAP SCREW (e.g. McMaster Carr 92185A089)

MODIFICATIONS:

- 1) ROUND THE TIP OF THE SCREW TO A R 1.5 mm SPHERE
- 2) MAKE THE LENGTH FROM THE TIP OF THE SCREW TO THE BASE OF THE HEAD TO EXACTLY 15.00 mm

REV.	DATE	DCN #	DRAWING TREE #
v1	21/10/2010	-	-
-	-	-	-
-	-	-	-



NOTES AND TOLERANCES: (UNLESS OTHERWISE SPECIFIED)

DIMENSIONS ARE IN mm

TOLERANCES:
X ± 0.1
XX ± 0.01

ANGULAR ± 0.2°

- 1. INTERPRET DRAWING PER ASME Y14.5-1994.
- 2. REMOVE ALL SHARP EDGES, R.5 MIN.
- 3. DO NOT SCALE FROM DRAWING
- 4. ALL MACHINING FLUIDS MUST BE FULLY SYNTHETIC, FULLY WATER SOLUBLE AND FREE OF SULFUR, SILICONE, AND CHLORINE.

MATERIAL
300 series Stainless Steel

FINISH
N/A μm



CALIFORNIA INSTITUTE OF TECHNOLOGY
MASSACHUSETTS INSTITUTE OF TECHNOLOGY

SYSTEM
aLIGO

SUB-SYSTEM
SUS

NEXT ASSY
D1002145

PART NAME
aLIGO ERM/TCP prism holder alignment screw

DESIGNER	M.v.Veggel	26/08/2010
DRAFTER	M.v.Veggel	27/08/2010
CHECKER	R.Jones	14/10/2010

SIZE	DWG. NO.	REV.
A	D1002289	v1

APPROVAL	SCALE: 4:1	PROJECTION:	SHEET 1 OF 1
----------	------------	-------------	--------------

4

3

2

1