

4

3

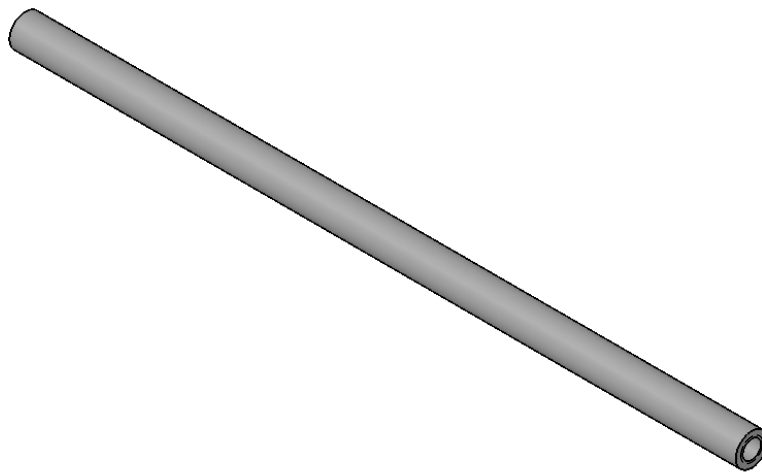
2

1

NOTES CONTINUED:

⑤ SCRIBE, ENGRAVE, OR MECHANICALLY STAMP (NO INKS OR DYES) DRAWING PART NUMBER AND REVISION ON NOTED SURFACE FOLLOWED ON THE NEXT LINE BY A THREE DIGIT SERIAL NUMBER. SERIAL NUMBERS START AT 001 FOR THE FIRST ARTICLE AND PROCEED CONSECUTIVELY. USE .07" HIGH CHARACTERS. EXAMPLE: DXXXXXXX-VY, S/N 001. A VIBRATORY TOOL MAY BE USED.

REV.	DATE	DCN #	DRAWING TREE #
v1	21/10/2010	-	-
-	-	-	-
-	-	-	-



D

D

C

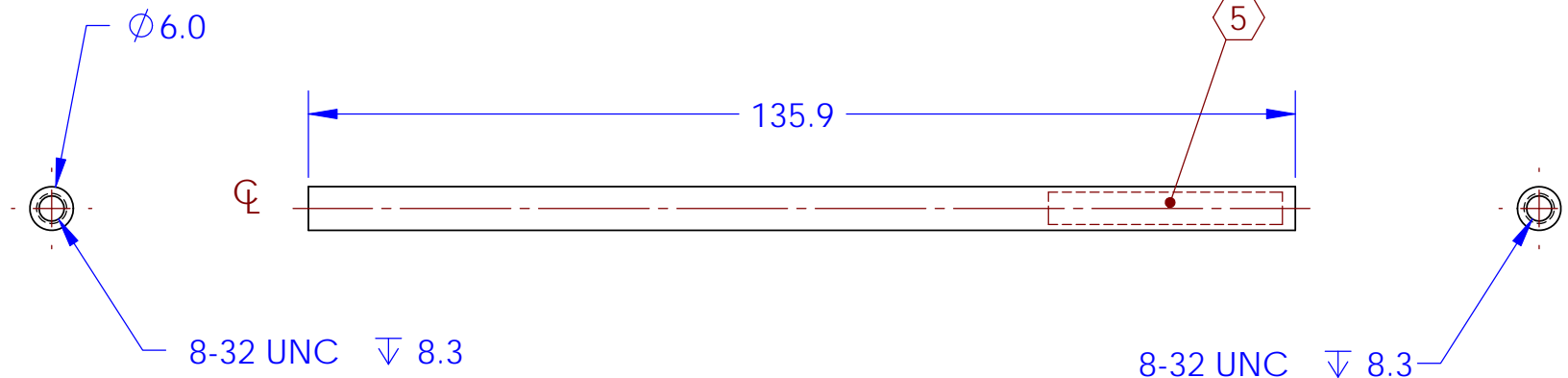
C

B

B

A

A



NOTES AND TOLERANCES: (UNLESS OTHERWISE SPECIFIED)

DIMENSIONS ARE IN mm

TOLERANCES:

X ± 0.1  
 XX ± 0.01

ANGULAR ± 0.2°

1. INTERPRET DRAWING PER ASME Y14.5-1994.
2. REMOVE ALL SHARP EDGES, R.5 MIN.
3. DO NOT SCALE FROM DRAWING.
4. ALL MACHINING FLUIDS MUST BE FULLY SYNTHETIC, FULLY WATER SOLUBLE AND FREE OF SULFUR, SILICONE, AND CHLORINE.

MATERIAL PTFE (general) FINISH 1.6 μm



SYSTEM aLIGO SUB-SYSTEM SUS

NEXT ASSY D1002202

PART NAME aLIGO ERM Prism bonding support cylinder

DESIGNER M.v.Veggel 26/08/2010 SIZE DWG. NO. A D1002288 REV. v1  
 DRAFTER M.v.Veggel 04/10/2010  
 CHECKER R.Jones 14/10/2010

APPROVAL SCALE: 1:1 PROJECTION: SHEET 1 OF 1