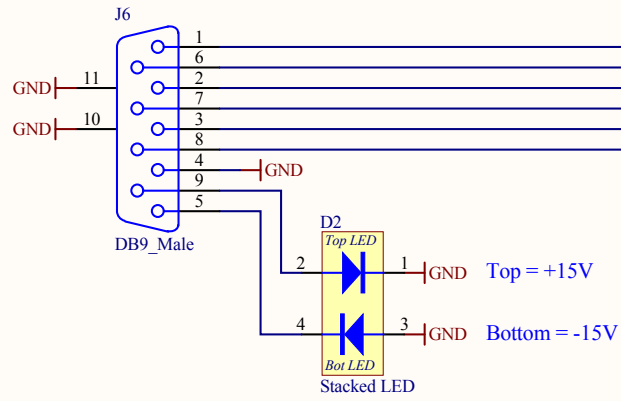
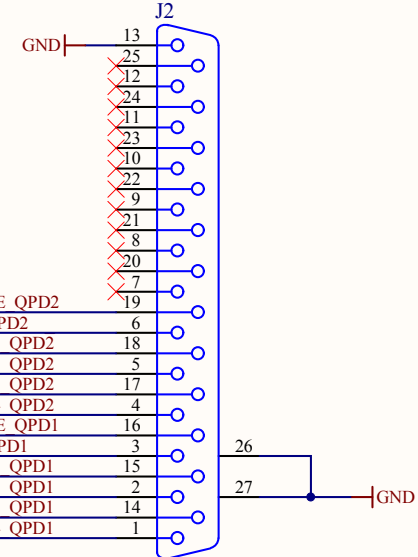
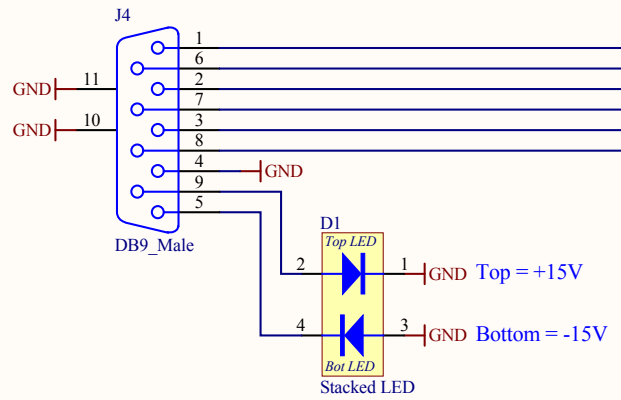


Board 2



Board 1



Revision History
 Version 1 - Prototype Release
 Version 2 - First Production Version, Corrected text errors
 Version 3 - Swapped db9 connectors to have board one and board two in the right place
 Version 4 - Revised 25 pin d-sub pinout for twisted pair compatibility
 Version 5 - Updated pinouts to accommodate the new vacuum cables.

Last Edited: April 18th, 2011

Title		ISC QPD Transimpedance Amp Interface Board*		* LIGO	
Size: A	DCC Number: D1002283	Revision: V5	Engineer: M. Mageswaran	Date: 4/18/2011	Time: 1:44:42 PM
File: C:\Users\mohana\Altium Design 2010\Adv\LIGO\ISC\Interface V5\D1002283 V5.SchDoc					Sheet * of *

ISC GPD Transimpedance Amp Interface

PCB L160-01002283 v5

SW

J4 Output to Photodiode Transimpedance Amp1

J6 Output to Photodiode Transimpedance Amp2

Input from Photodiode

J3 +15/-15 Amp1 PWR

J2

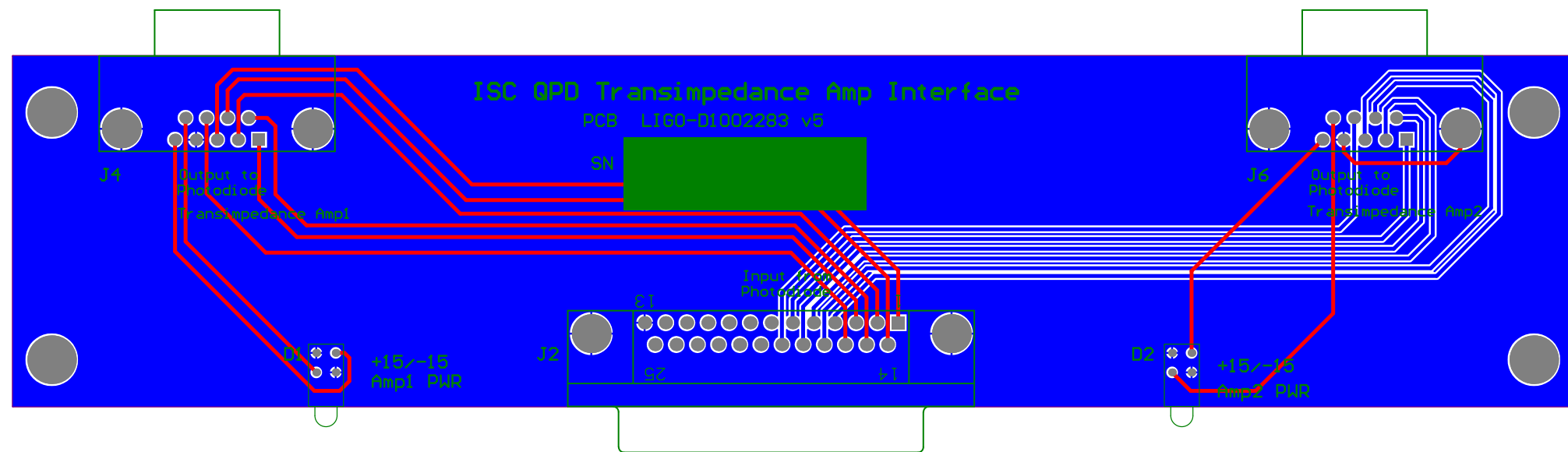
S1

S2

S1

J5

+15/-15 Amp2 PWR



Comment	Description	Designator	Footprint	LibRef	Quantity
Stacked LED	Dual Green LED	D1, D2	DUAL_LED	Dual Stacked LED	2
D Connector 25	Receptacle Assembly, 25 Position, Right Angle	J2	DSUB1.385-2H25A	D Connector 25	1
DB9_Male	Receptacle Assembly	J4, J6	DB9/ M/ RA	D Connector 9	2