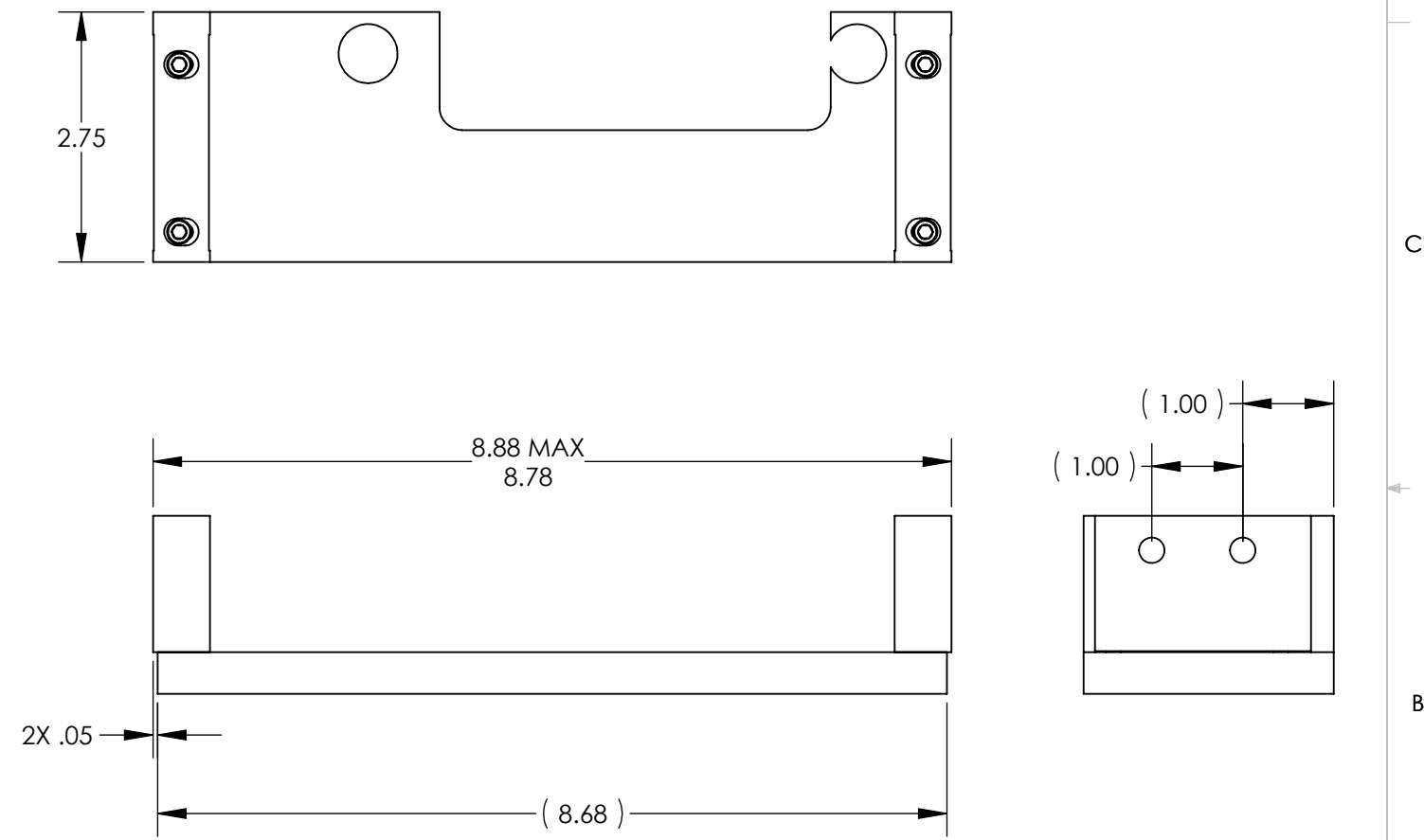
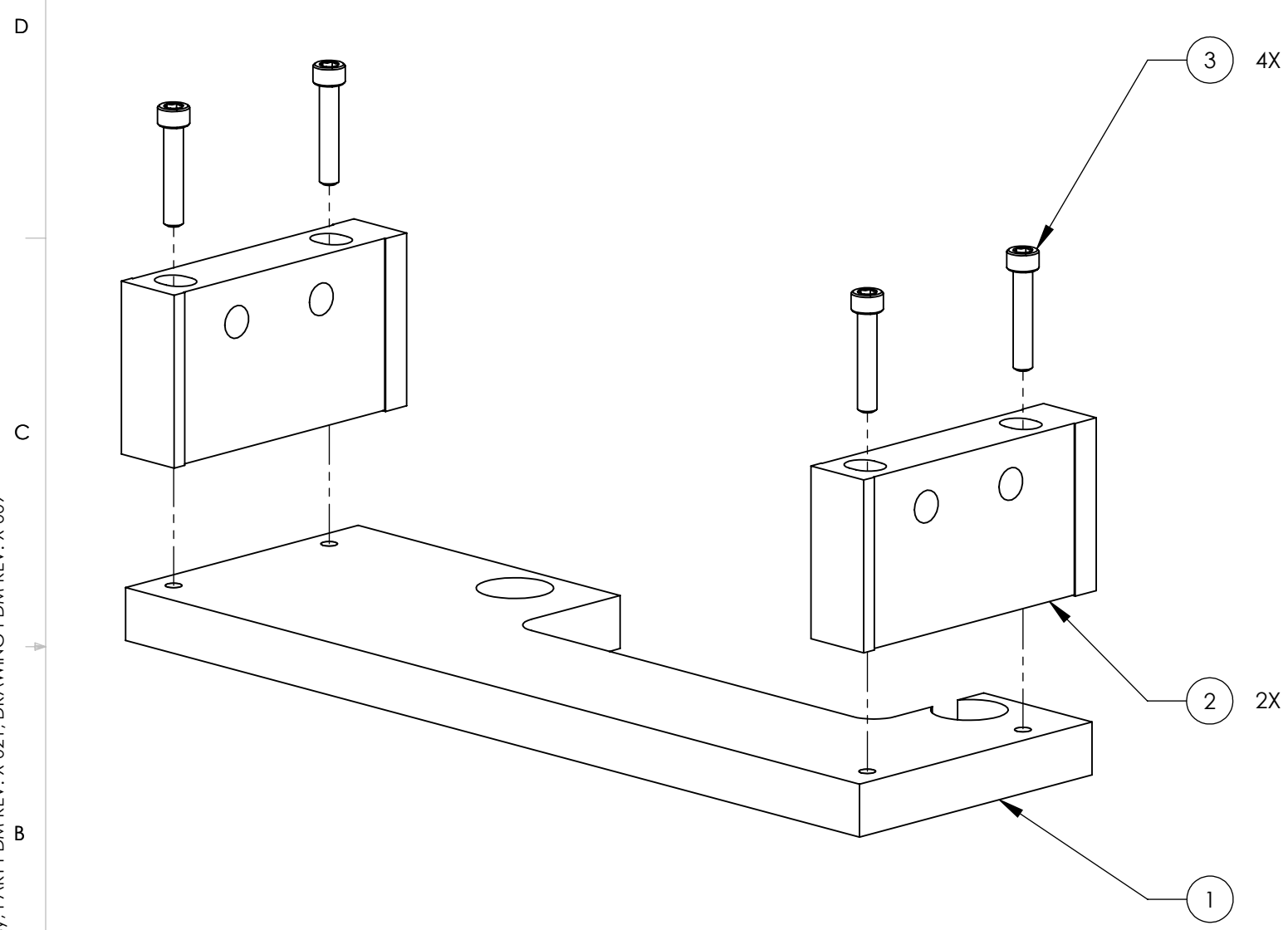


D1002256\_AdlIGO\_AOS\_D0900136\_Earthquake Crossbar\_In Assy, PART PDM REV: X-021, DRAWING PDM REV: X-009

REV.	DATE	DCN #	DRAWING TREE #
V1	08 OCT 2010	E1000563	
V2	22 MAR 2011	E1000563	
v3	31 AUG 2012	E1000563	



ITEM NO.	PART NUMBER	DESCRIPTION	MATERIAL	QTY	TOTAL
3	C-814-N	C-814-N_SHCS 8-32 X .875 IN LONG, UC COMPONENTS		4	0
2	D0900169	CROSSBAR SIDE	6061-T6 Al	2	0
1	D1002257	CROSSBAR PLATE_IN	6061-T6 Al	1	0

NOTES AND TOLERANCES: (UNLESS OTHERWISE SPECIFIED)

DIMENSIONS ARE IN INCHES  
TOLERANCES:  
.XX ± .02  
.XXX ± .010  
ANGULAR ± 1.0°

MATERIAL		FINISH		NEXT ASSY		PART NAME		SIZE DWG. NO.		REV.	
--		-- μinch		D0900136		EARTHQUAKE CROSSBAR_IN ASSY		B D1002256		v3	

SCALE: 3:4 PROJECTION: SHEET 1 OF 1

8                      7                      6                      5                      4                      3                      2                      1

8                      7                      6                      5                      4                      3                      2                      1