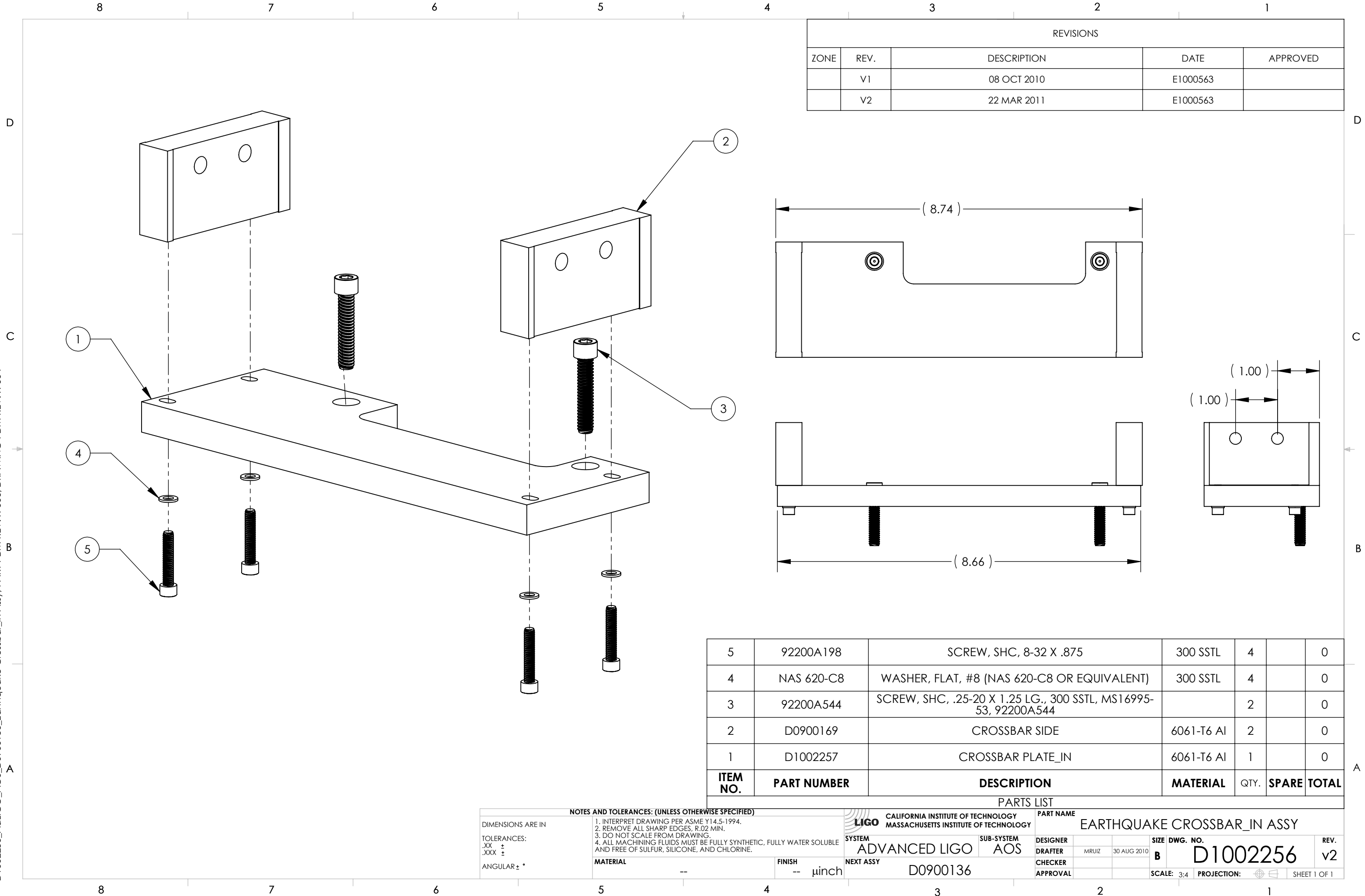


D1002256_AdlIGO_AOS_D0900136_Earthquake Crossbar_In Assy, PART PDM REV: X-006, DRAWING PDM REV: X-004



REVISIONS				
ZONE	REV.	DESCRIPTION	DATE	APPROVED
	V1	08 OCT 2010	E1000563	
	V2	22 MAR 2011	E1000563	

ITEM NO.	PART NUMBER	DESCRIPTION	MATERIAL	QTY.	SPARE	TOTAL
5	92200A198	SCREW, SHC, 8-32 X .875	300 SSSL	4		0
4	NAS 620-C8	WASHER, FLAT, #8 (NAS 620-C8 OR EQUIVALENT)	300 SSSL	4		0
3	92200A544	SCREW, SHC, .25-20 X 1.25 LG., 300 SSSL, MS16995-53, 92200A544		2		0
2	D0900169	CROSSBAR SIDE	6061-T6 Al	2		0
1	D1002257	CROSSBAR PLATE_IN	6061-T6 Al	1		0

NOTES AND TOLERANCES: (UNLESS OTHERWISE SPECIFIED)

DIMENSIONS ARE IN
 TOLERANCES:
 .XX ±
 .XXX ±
 ANGULAR ± °

1. INTERPRET DRAWING PER ASME Y14.5-1994.
 2. REMOVE ALL SHARP EDGES, R.02 MIN.
 3. DO NOT SCALE FROM DRAWING.
 4. ALL MACHINING FLUIDS MUST BE FULLY SYNTHETIC, FULLY WATER SOLUBLE AND FREE OF SULFUR, SILICONE, AND CHLORINE.

MATERIAL: -- FINISH: -- μinch

LIGO CALIFORNIA INSTITUTE OF TECHNOLOGY
 MASSACHUSETTS INSTITUTE OF TECHNOLOGY

SYSTEM: **ADVANCED LIGO** SUB-SYSTEM: **AOS** PART NAME: **EARTHQUAKE CROSSBAR_IN ASSY**

DESIGNER: MRUIZ 30 AUG 2010 SIZE DWG. NO.: **B D1002256** REV.: **v2**

CHECKER: APPROVAL: NEXT ASSY: **D0900136** SCALE: 3:4 PROJECTION: SHEET 1 OF 1