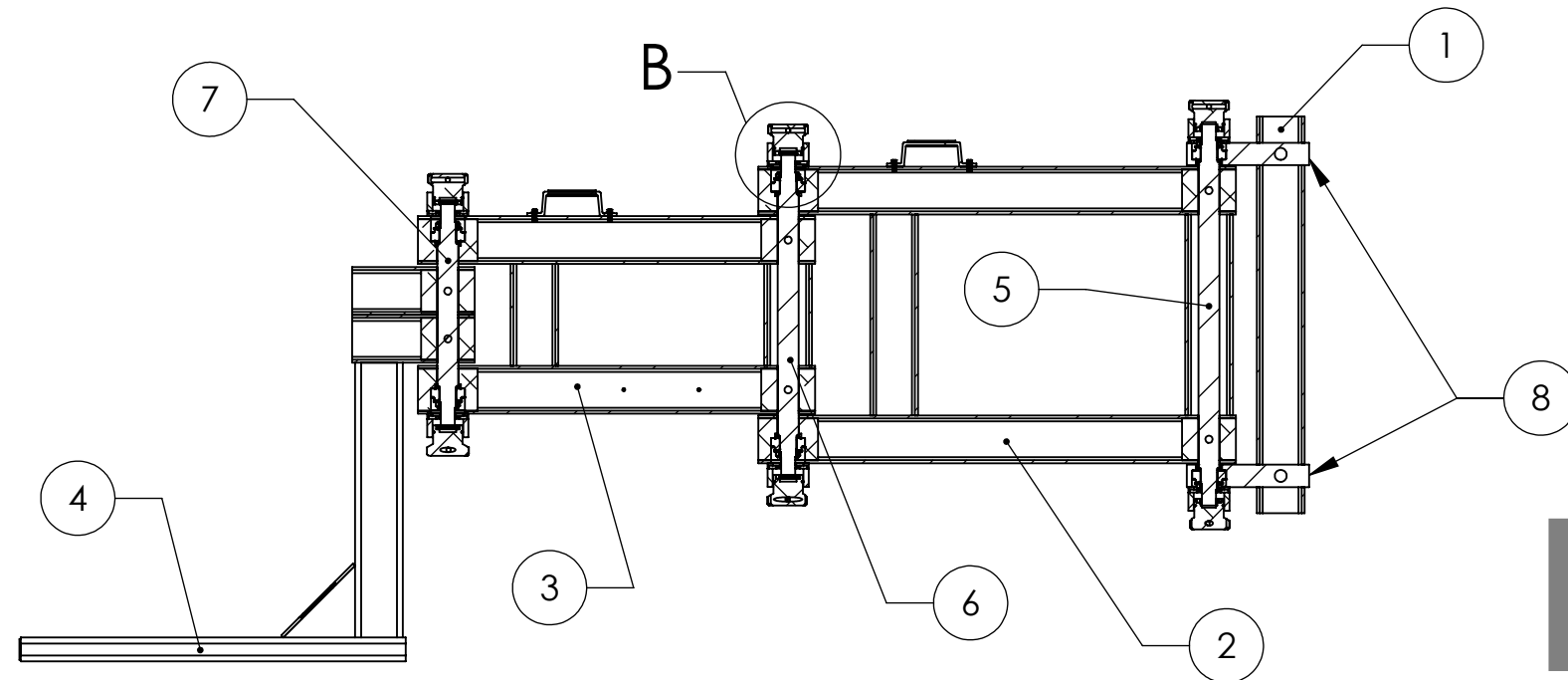
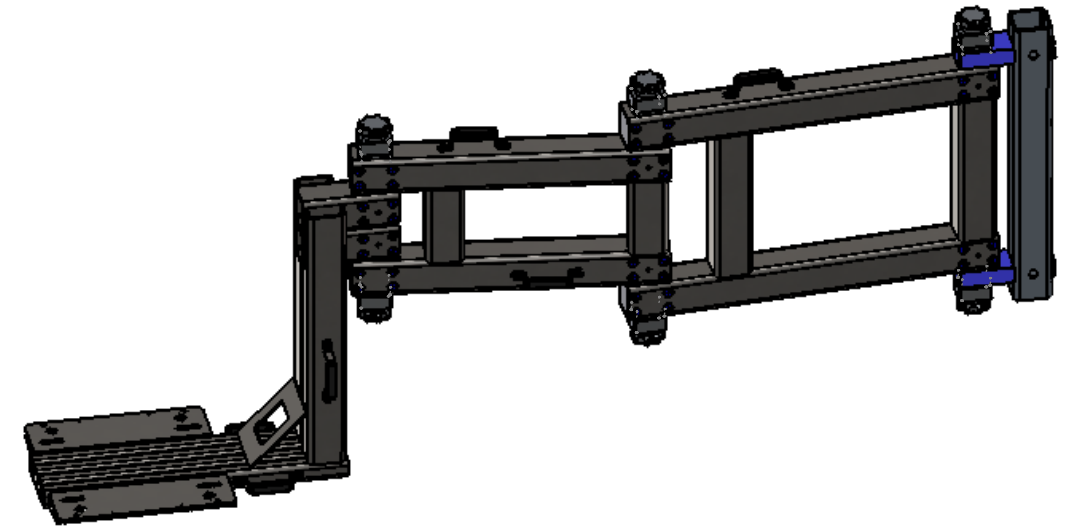
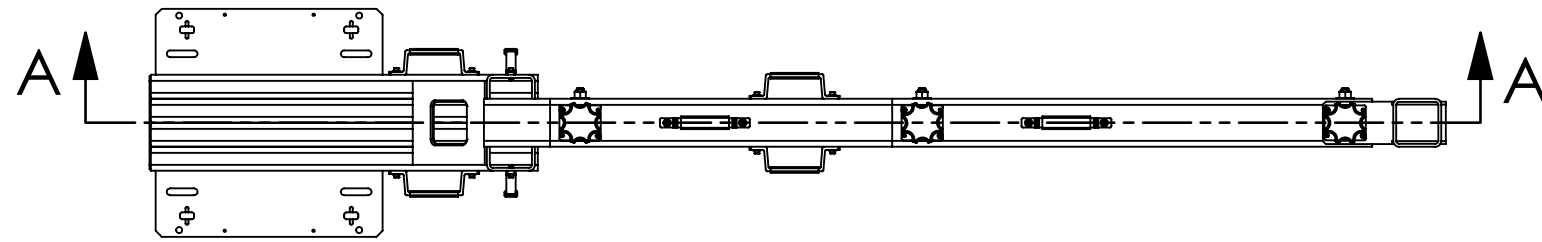


D1001954 - aLIGO, ASSEMBLY, BSC ARM, PART PDM REV: X-023, DRAWING PDM REV: X-002

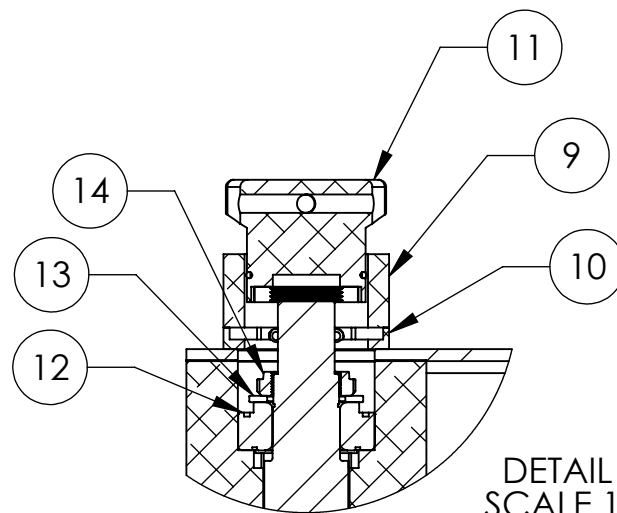
REV.	DATE	DCN #	DRAWING TREE #
-	-	-	-
-	-	-	-
-	-	-	-



SECTION A-A

PRELIMINARY

ITEM NO.	PART NUMBER	DESCRIPTION	MATERIAL	QTY
23				6
22	McMASTER 91375A575	Set Screw, 5/16"-18 X 5/16" L	Alloy Steel	24
21	McMASTER 98023A029	Washer, For 1/4" Screw (9/32" ID), 5/8" OD	Gr. 8 Steel	16
20	McMASTER 92141A035	Washer, For 5/8" Screw (11/16" ID), 1-1/2" OD	18-8 Stainless Steel	6
19	McMASTER 91251A551	SHCS, 1/4"-20 X 2-1/4" L	Alloy Steel	12
18	McMASTER 96006A706	SHCS, 1/4"-20 X 3/4" L	18-8 Stainless Steel	16
17	91251A538	SHCS, 1/4"-20 X 9/16" L	Alloy Steel	12
16	McMASTER 90499A835	Hex Nut, 5/8"-18	Gr. 8 Steel	6
15	McMASTER 1973A1	Handle, Rubber Covered Steel	Alloy Steel	8
14	McMASTER 6343K79	Bearing Locknut, 1.376"-18, 2-1/16" OD, 1/2" W	303 Stainless Steel	6
13	McMASTER 97063A146	Washer, 1-5/8" ID, 2-3/8" OD, 0.134" Thick	Steel	6
12	TIMKEN - HM88648	Roller Bearing, Taper		6
11	D1002139	aLIGO, BSC ARM, ASSEMBLY, HANDLE, TORQUE LIMITER	N/A	6
10	D1002138	aLIGO, BSC ARM, HOUSING, SPROCKET	6061 Alloy	6
9	D1002137	aLIGO, BSC ARM, HOUSING, TORQUE LIMITER	6061 Alloy	6
8	D1002064	aLIGO, BSC ARM, FLANGE MOUNT, BEARING HOLDER	Alloy Steel	2
7	D1001848-3	aLIGO, BSC ARM, CONNECTOR SHAFT, SHORT	Alloy Steel	1
6	D1001848-2	aLIGO, BSC ARM, CONNECTOR SHAFT, MEDIUM	Alloy Steel	1
5	D1001848-1	aLIGO, BSC ARM, CONNECTOR SHAFT, LONG	ALLOY STEEL	1
4	D1001898	aLIGO, BSC ARM, FIXTURE ARM	--	1
3	D1001736	aLIGO, ASSEMBLY, BSC ARM, SECONDARY	--	1
2	D1001735	aLIGO, ASSEMBLY, BSC ARM, PRIMARY	--	1
1	D1001897	aLIGO, BSC ARM, FLANGE MOUNT	AISI 304	1



DETAIL B
SCALE 1 : 4

NOTES AND TOLERANCES: (UNLESS OTHERWISE SPECIFIED)

DIMENSIONS ARE IN
TOLERANCES:
.XX ±
.XXX ±
ANGULAR ± °

1. INTERPRET DRAWING PER ASME Y14.5-1994.
2. REMOVE ALL SHARP EDGES, R.02 MIN.
3. DO NOT SCALE FROM DRAWING.
4. ALL MACHINING FLUIDS MUST BE FULLY SYNTHETIC, FULLY WATER SOLUBLE AND FREE OF SULFUR, SILICONE, AND CHLORINE.

MATERIAL N/A FINISH N/A μinch

CALIFORNIA INSTITUTE OF TECHNOLOGY MASSACHUSETTS INSTITUTE OF TECHNOLOGY		PART NAME	
SYSTEM	SUB-SYSTEM	DESIGNER	REV.
		DRAFTER	
		CHECKER	
		APPROVAL	
NEXT ASSY		SIZE DWG. NO.	
		B	
		SCALE: 1:16	PROJECTION:
			SHEET 1 OF 3