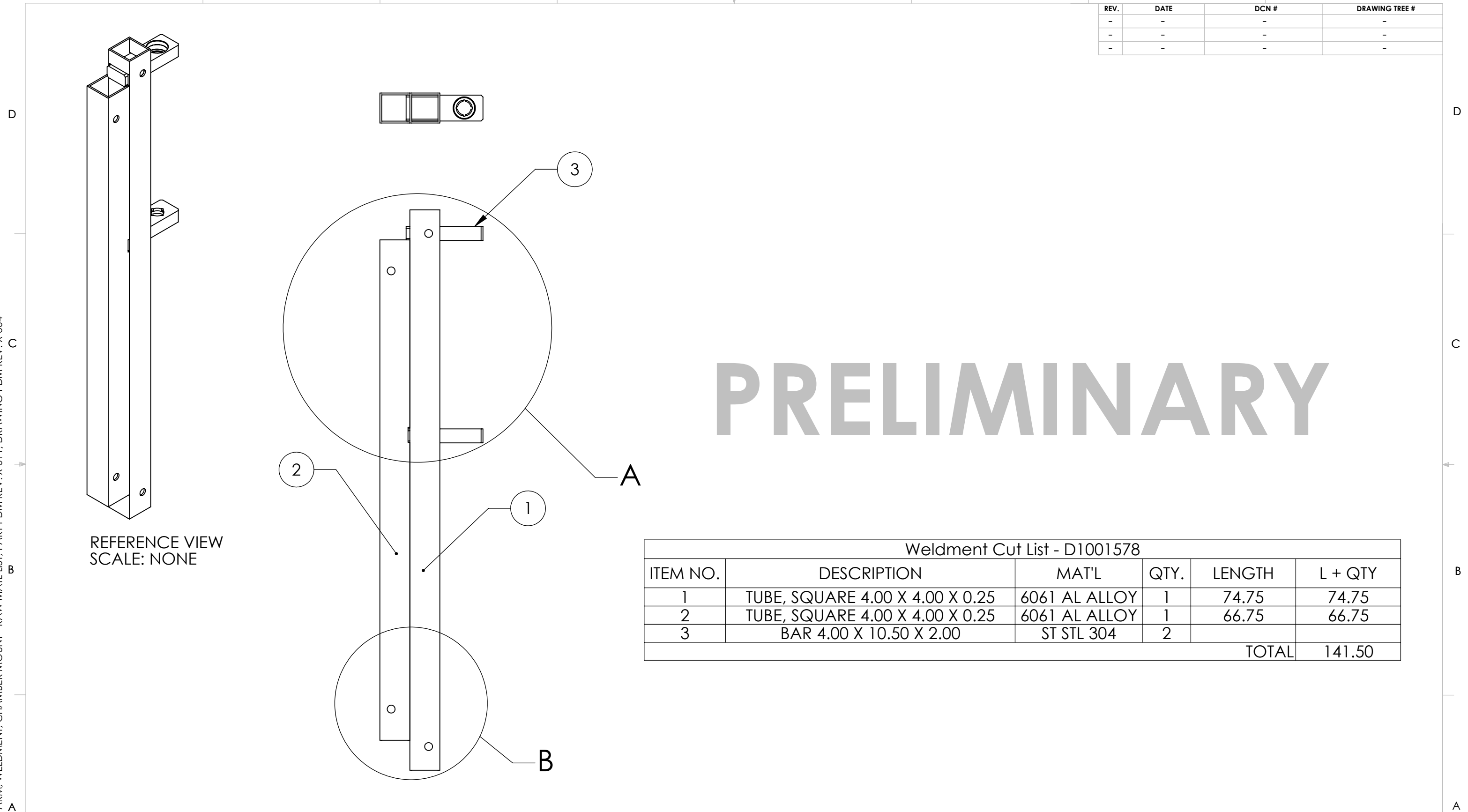


D1001578 - QLIGO, HAM ARM, WELDMENT, CHAMBER MOUNT - RAW MATL LIST, PART PDM REV: X-011, DRAWING PDM REV: X-004

REV.	DATE	DCN #	DRAWING TREE #
-	-	-	-
-	-	-	-
-	-	-	-



REFERENCE VIEW
SCALE: NONE

PRELIMINARY

Weldment Cut List - D1001578					
ITEM NO.	DESCRIPTION	MAT'L	QTY.	LENGTH	L + QTY
1	TUBE, SQUARE 4.00 X 4.00 X 0.25	6061 AL ALLOY	1	74.75	74.75
2	TUBE, SQUARE 4.00 X 4.00 X 0.25	6061 AL ALLOY	1	66.75	66.75
3	BAR 4.00 X 10.50 X 2.00	ST STL 304	2		
TOTAL					141.50

NOTES CONTINUED:
 ③ SCRIBE, ENGRAVE, OR MECHANICALLY STAMP (NO INKS OR DYES) DRAWING PART NUMBER, REVISION (AND VARIANT OR "TYPE" IF APPLICABLE) ON NOTED SURFACE OF PART FOLLOWED ON THE NEXT LINE WITH A THREE DIGIT SERIAL NUMBER. SERIAL NUMBERS START AT 001 FOR THE FIRST ARTICLE AND PROCEED CONSECUTIVELY. USE MINIMUM 0.12" HIGH CHARACTERS, UNLESS THE SIZE OF THE PART DICTATES SMALLER CHARACTERS. A VIBRATORY TOOL MAY BE USED.
 EXAMPLE: DXXXXXX-VY, TYPE-XX, S/N XXX

NOTES AND TOLERANCES: (UNLESS OTHERWISE SPECIFIED)				CALIFORNIA INSTITUTE OF TECHNOLOGY MASSACHUSETTS INSTITUTE OF TECHNOLOGY		PART NAME	
DIMENSIONS ARE IN		1. INTERPRET DRAWING PER ASME Y14.5-1994. 2. REMOVE ALL SHARP EDGES, R.02 MIN. 3. DO NOT SCALE FROM DRAWING. 4. ALL MACHINING FLUIDS MUST BE FULLY SYNTHETIC, FULLY WATER SOLUBLE AND FREE OF SULFUR, SILICONE, AND CHLORINE.		LIGO SYSTEM		LIGO, HAM ARM, WELDMENT, CHAMBER MOUNT	
TOLERANCES: .XX ± .XXX ±		MATERIAL - SEE PARTS LIST -		SUB-SYSTEM		DESIGNER S. SHANKLE	DATE 10 JUN 2010
ANGULAR ± °		FINISH N/A μinch		NEXT ASSY D1001524		CHECKER	SIZE DWG. NO. B D1001578
						APPROVAL	REV.
						SCALE: 1:12 PROJECTION: SHEET 1 OF 3	