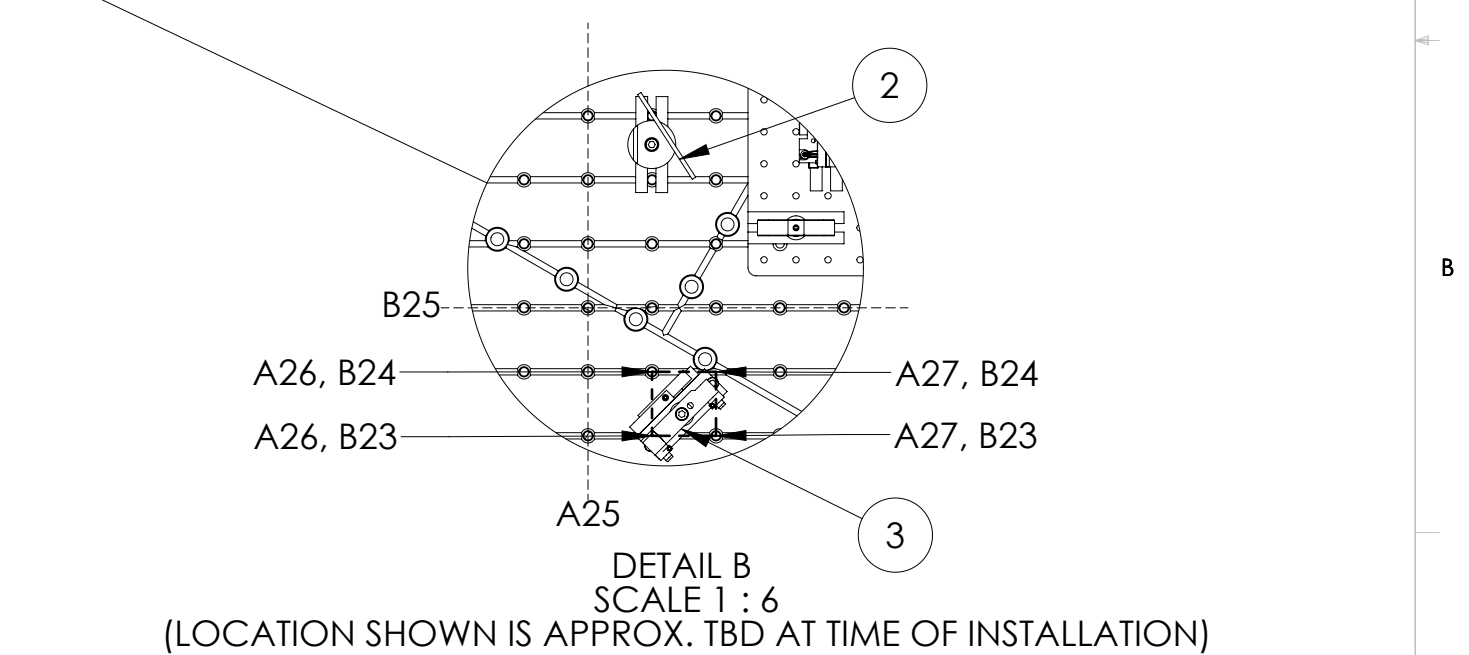
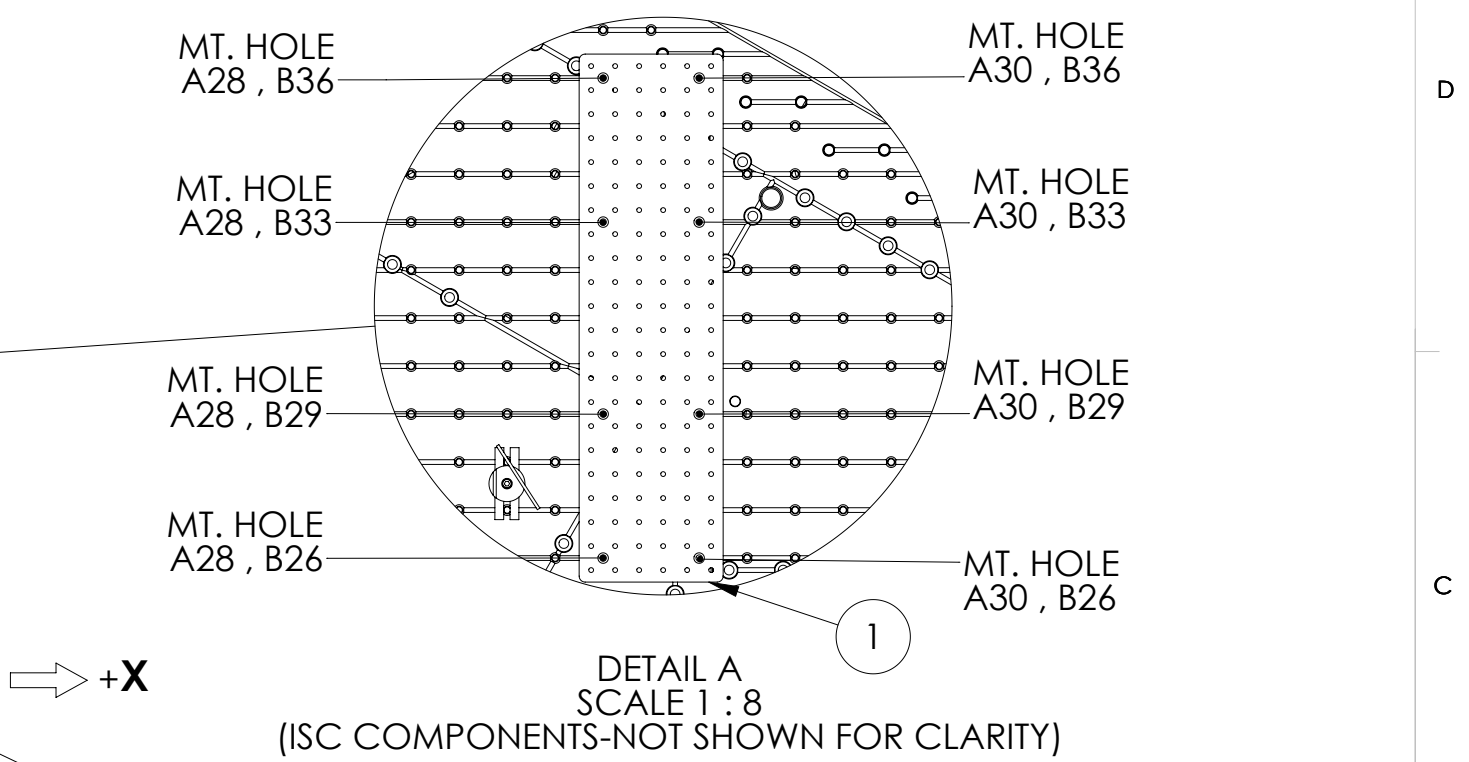
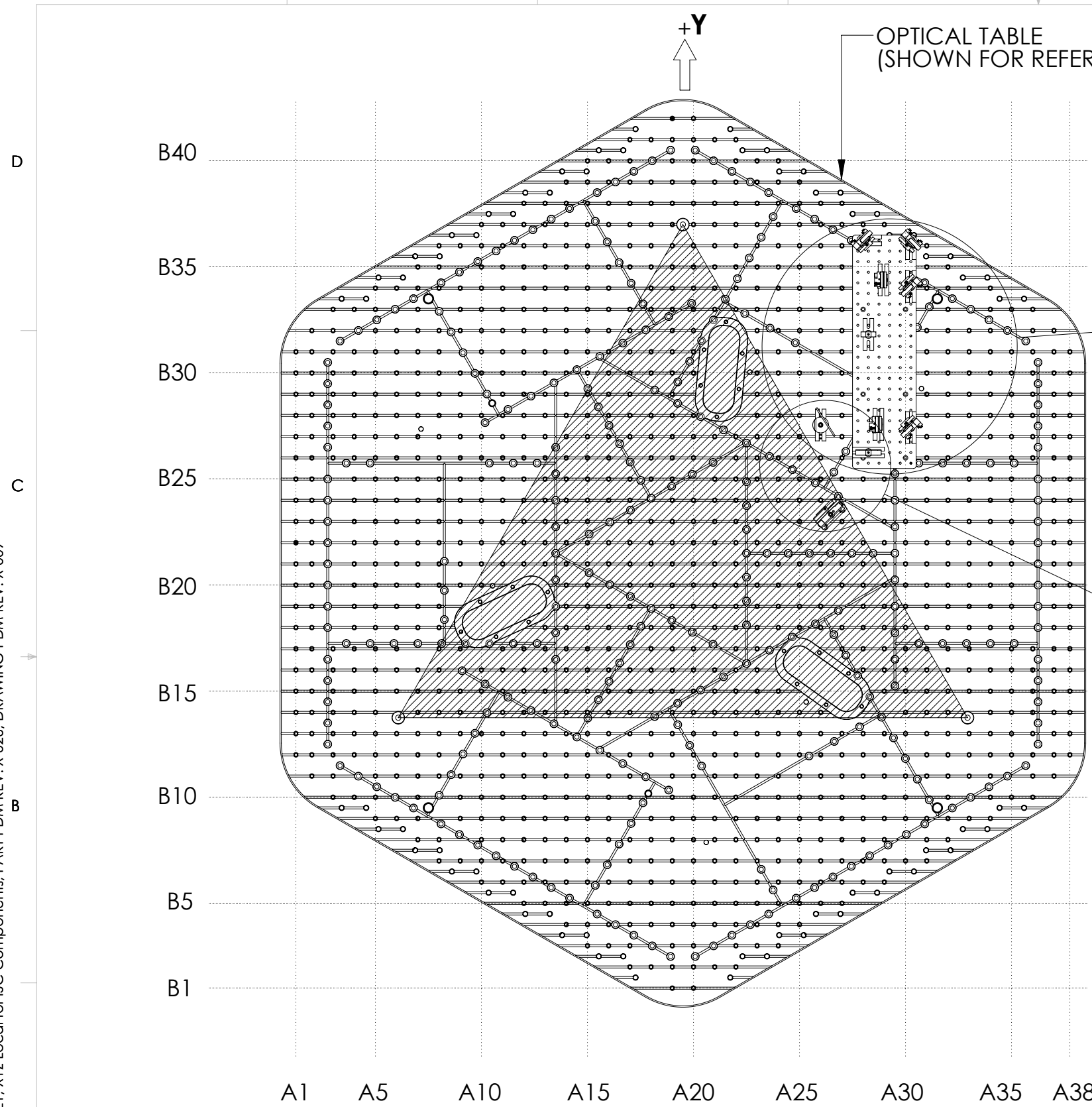


D1002234 AdvLIGO SEI HAM3-L1, XYZ Local for ISC Components, PART PDM REV: X-026, DRAWING PDM REV: X-009

REV.	DATE	DCN #	DRAWING TREE #
v1	02 AUG 2011	-	-
v2	03 OCT 2011	-	-
v3	19 DEC 2013	E1300972-x0	-



TOP*
SEE G1000125 FOR HAM ISI SYSTEM ORIENTATION WITH RESPECT TO VACUUM CHAMBER AND IFO GLOBAL COORDINATE SYSTEM

ITEM NO.	PART NUMBER	DESCRIPTION	QTY.
3	D1300231	2" Mirror Mount, RIGHT HAND Holder, 4" Beam Height	1
2	D1000971	BEAM DUMP - SMALL	1
1	D1000339	ISC_HAM3_Assembly	1

*SEE D1101296 FOR HAM CHAMBER HOLE TAB.

NOTES AND TOLERANCES: (UNLESS OTHERWISE SPECIFIED)

MATERIAL	N/A	FINISH	N/A μinch	NEXT ASSY	D0900365
CALIFORNIA INSTITUTE OF TECHNOLOGY MASSACHUSETTS INSTITUTE OF TECHNOLOGY				PART NAME AdvLIGO SEI HAM3-L1, XYZ Local for ISC Components	
SYSTEM ADVANCED LIGO SYSTEMS		DESIGNER E.CHAVEZ	DRAFTER E.SANCHEZ	DATE 02 AUG 2011	SIZE DWG. NO. B
APPROVAL SEE DCC		CHECKER SEE DCC	APPROVAL SEE DCC	SCALE: 1:12	PROJECTION:
DRAWING NO. D1002234					REV. v3
SHEET 1 OF 1					