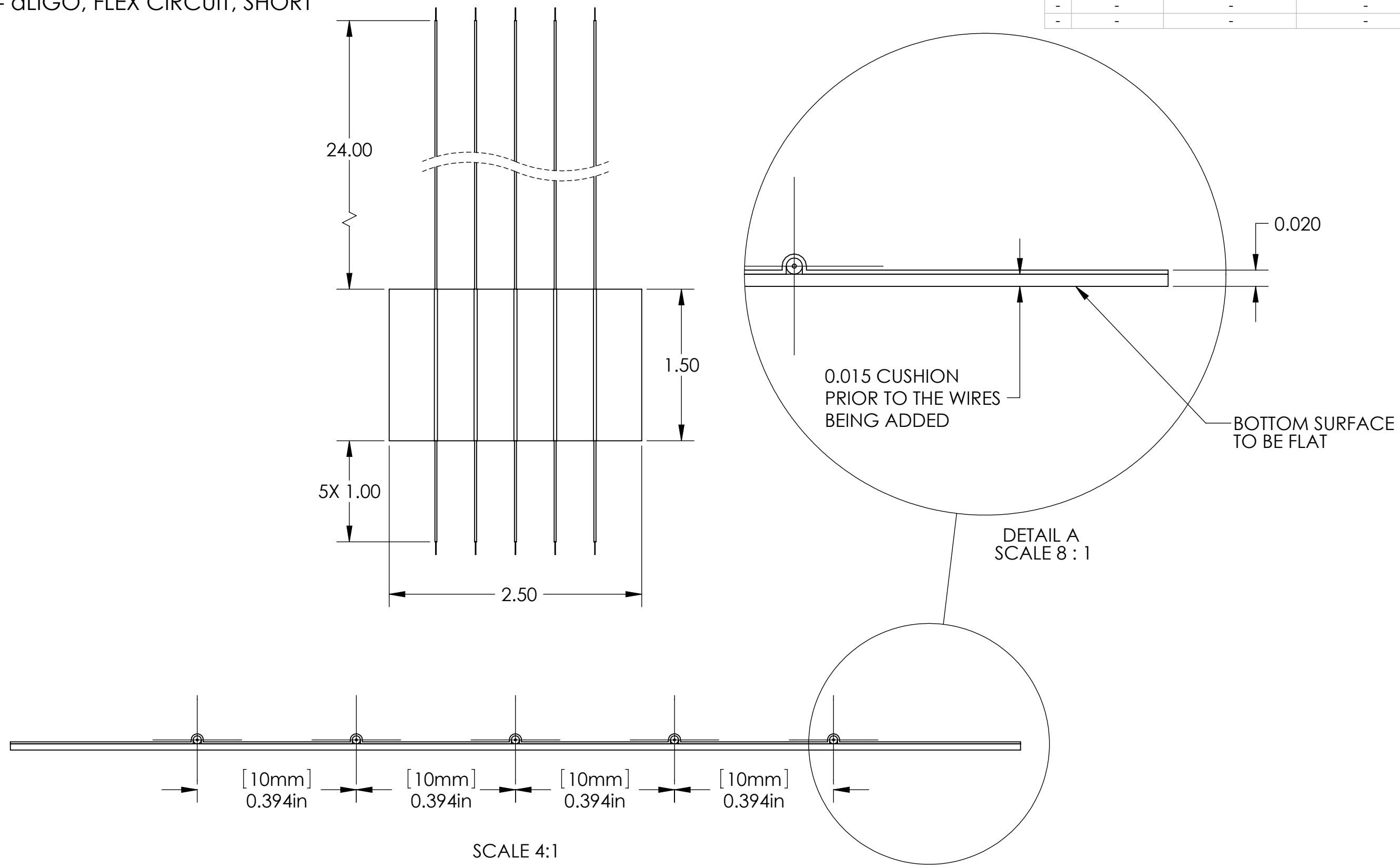


D1002225-1 - aLIGO, FLEX CIRCUIT, SHORT

REV.	DATE	DCN #	DRAWING TREE #
-	-	-	-
-	-	-	-
-	-	-	-



D1002225 - aLIGO, FLEX CIRCUIT, SHORT, PART PDM REV: X-000, DRAWING PDM REV: X-003

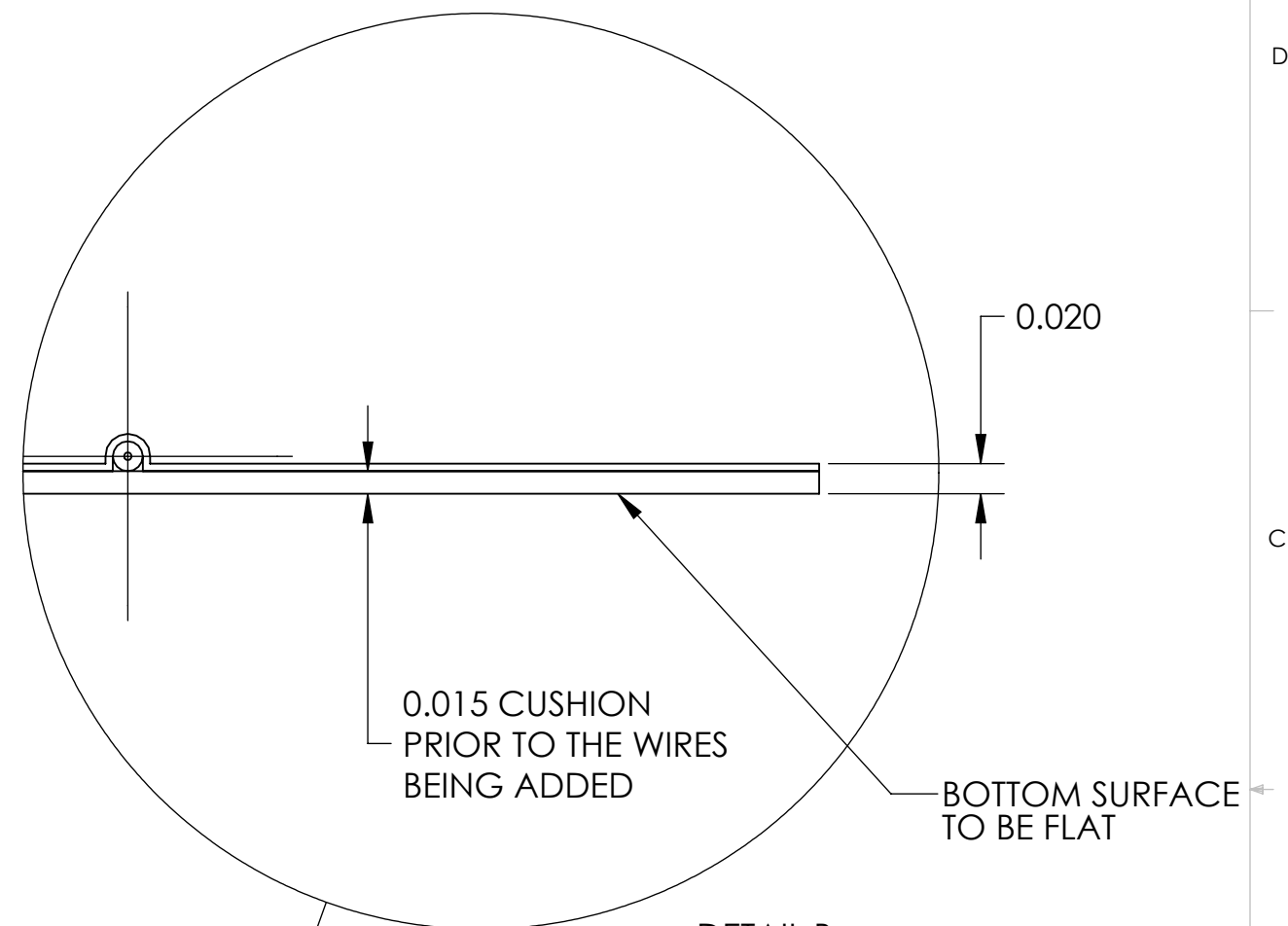
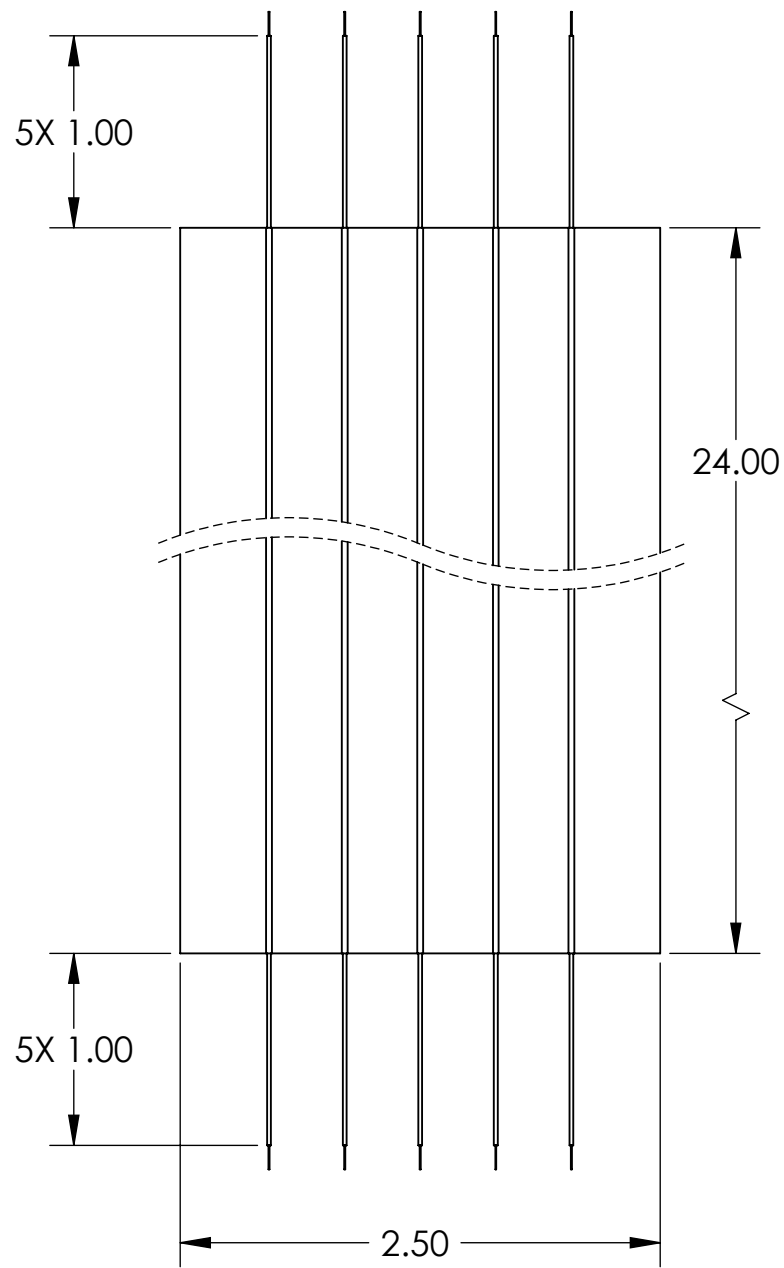
NOTES AND TOLERANCES: (UNLESS OTHERWISE SPECIFIED)				LIGO CALIFORNIA INSTITUTE OF TECHNOLOGY MASSACHUSETTS INSTITUTE OF TECHNOLOGY		PART NAME	
DIMENSIONS ARE IN INCHES				SYSTEM		SUB-SYSTEM	
TOLERANCES: .XX ± 0.02 .XXX ± 0.010				NEXT ASSY		DESIGNER J. DAVIS 18 AUG 2010	
ANGULAR ± 1°				FINISH μinch		DRAFTER J. DAVIS 18 AUG 2010	
1. INTERPRET DRAWING PER ASME Y14.5-1994. 2. REMOVE ALL SHARP EDGES, R.02 MIN. 3. DO NOT SCALE FROM DRAWING. 4. ALL MACHINING FLUIDS MUST BE FULLY SYNTHETIC, FULLY WATER SOLUBLE AND FREE OF SULFUR, SILICONE, AND CHLORINE.				MATERIAL		CHECKER	
				APPROVAL		SCALE: 1:1 PROJECTION:	
						SHEET 1 OF 2	

aLIGO, FLEX CIRCUIT			SIZE	DWG. NO.	REV.
			B	D1002225	v1

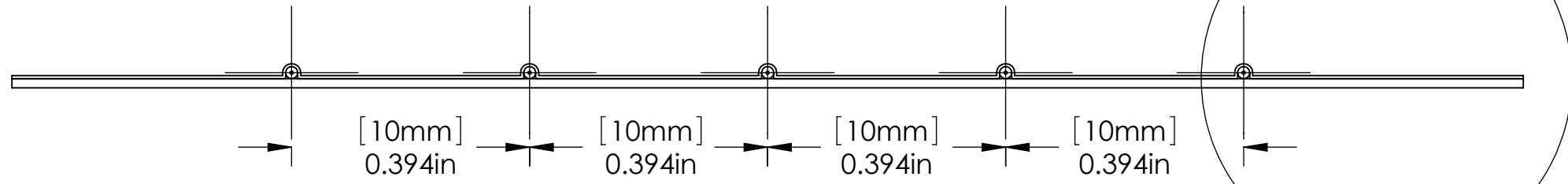
D1002225-2 - aLIGO, FLEX CIRCUIT, LONG

D1002225 - aLIGO, FLEX CIRCUIT, SHORT, PART PDM REV: X-000, DRAWING PDM REV: X-003

D  
C  
B  
A



DETAIL B  
SCALE 8 : 1



SCALE 4:1

8 7 6 5 4 3 2 1

CALIFORNIA INSTITUTE OF TECHNOLOGY MASSACHUSETTS INSTITUTE OF TECHNOLOGY		
SIZE	DWG. NO.	REV.
B	D1002225	v1
SCALE: 1:1	PROJECTION:	SHEET 2 OF 2