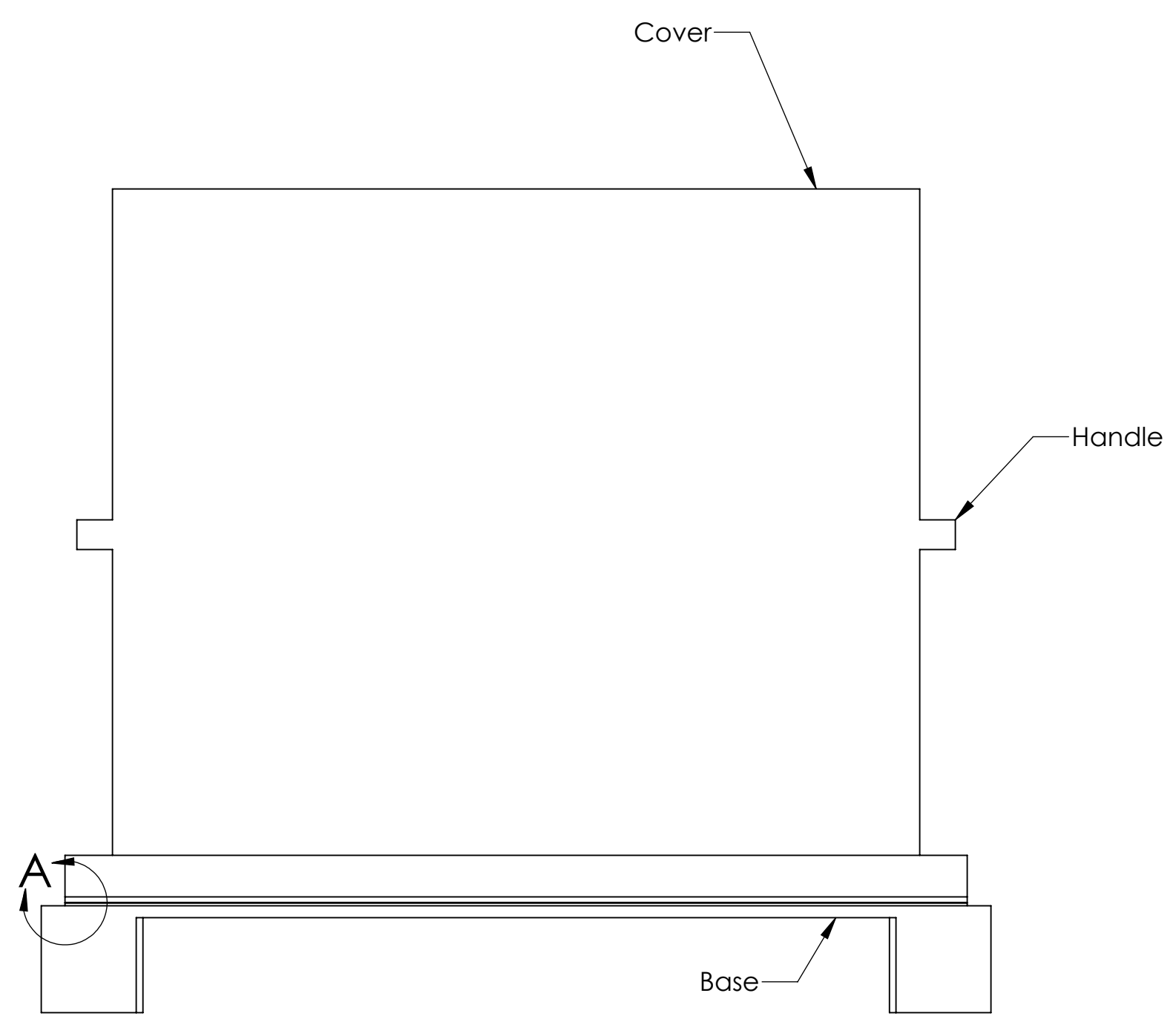
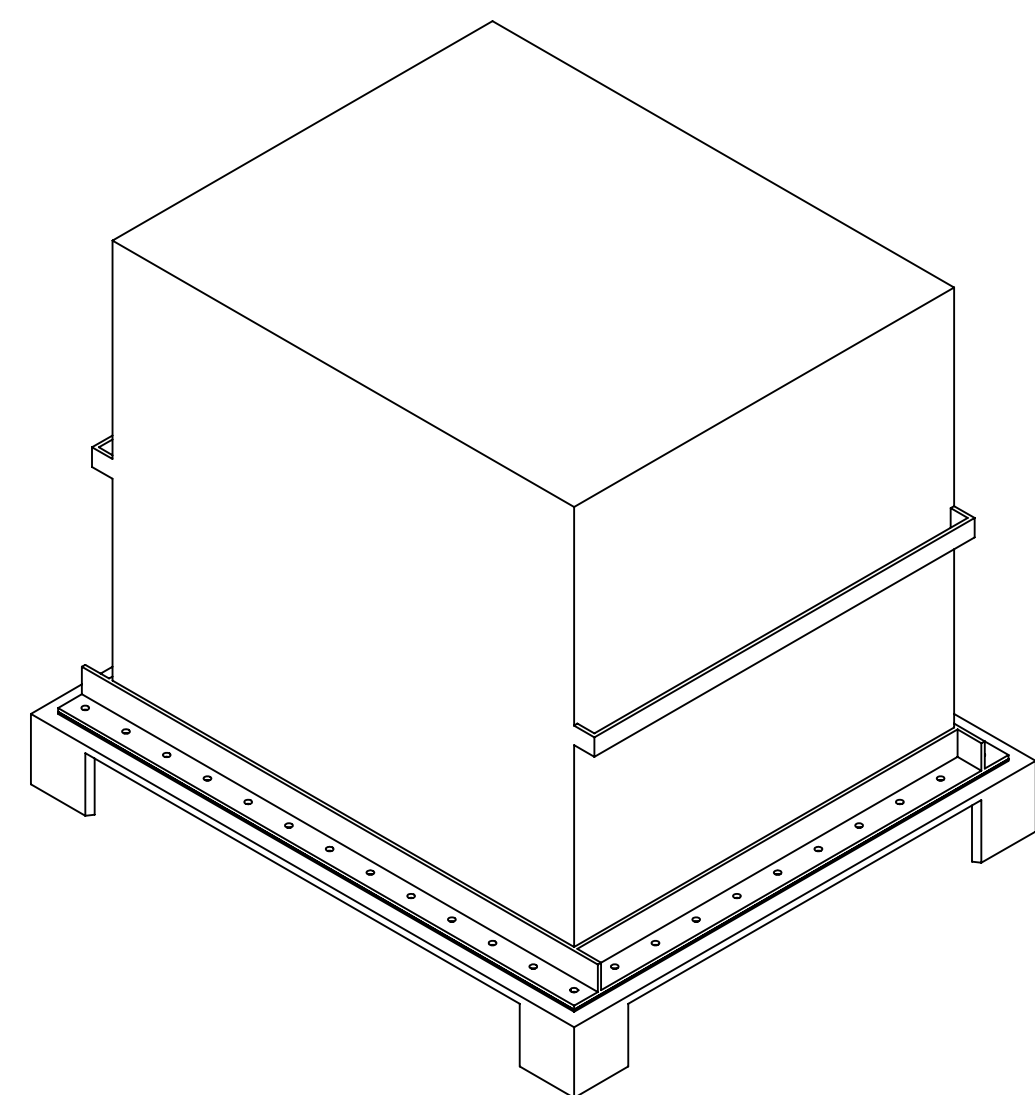


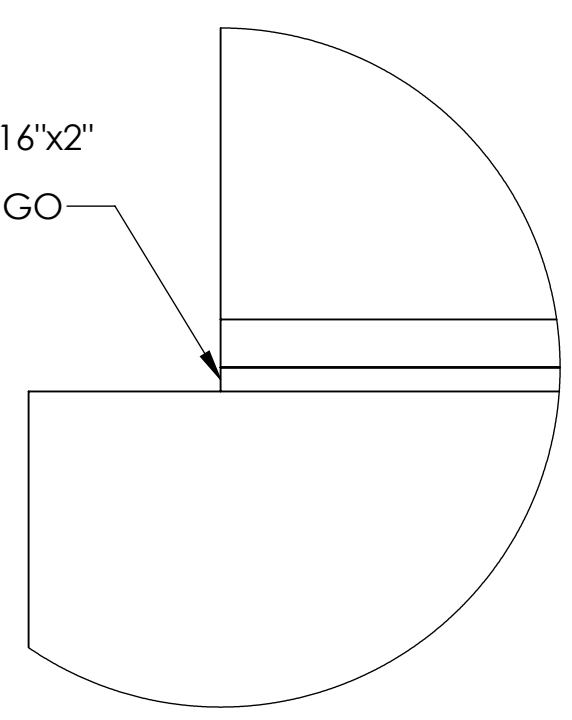
REV.	DATE	DCN #	DRAWING TREE #
-	-	-	-
-	-	-	-
-	-	-	-

NOTES:
 1. Preclean stock finishes with steel wool to remove ink, dirt, oils, etc. prior to welding.
 2. Full seal welds on cover to be done from interior of cover.

Storage Container Assembly



Removable 3/16"x2" Viton Gasket Provided by LIGO



DETAIL A
SCALE 1 : 1

NOTES AND TOLERANCES: (UNLESS OTHERWISE SPECIFIED)

- INTERPRET DRAWING PER ASME Y14.5-1994.
- REMOVE ALL SHARP EDGES, R.02 MIN.
- DO NOT SCALE FROM DRAWING.
- ALL MACHINING FLUIDS MUST BE FULLY SYNTHETIC, FULLY WATER SOLUBLE AND FREE OF SULFUR, SILICONE, AND CHLORINE.

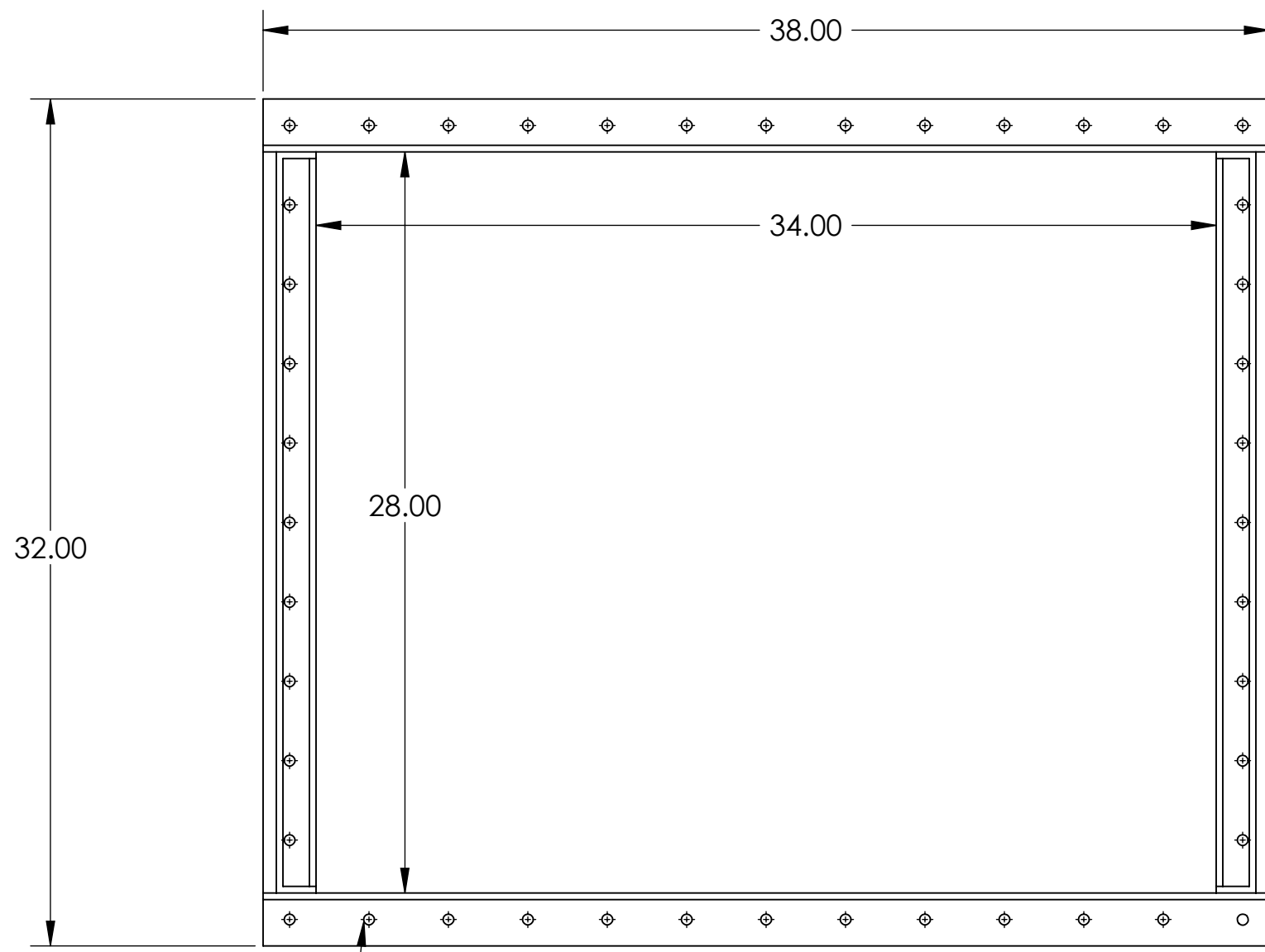
MATERIAL	N/A	FINISH	N/A μinch
----------	-----	--------	-----------



SYSTEM	SUB-SYSTEM	DESIGNER	Jim Warner	SIZE	DWG. NO.	REV.
	SUS	DRAFTER		c	D1002222	1
NEXT ASSY		CHECKER		APPROVAL		

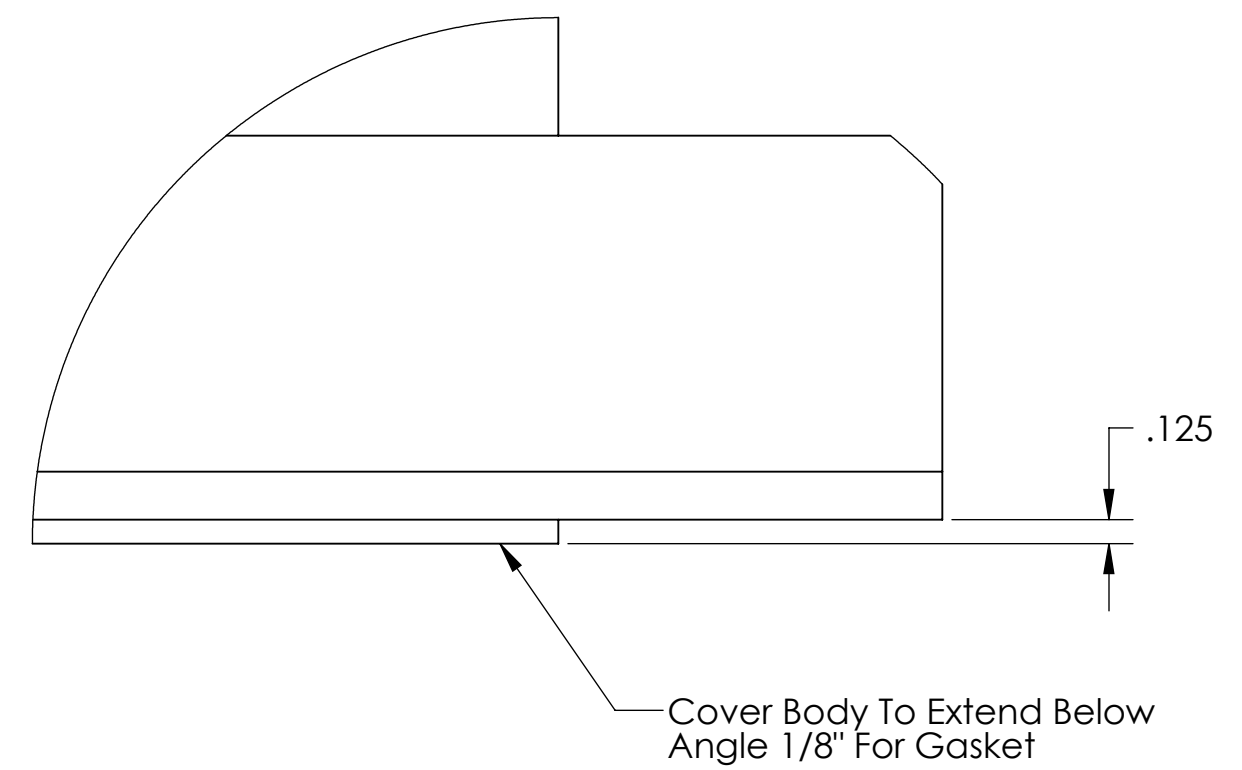
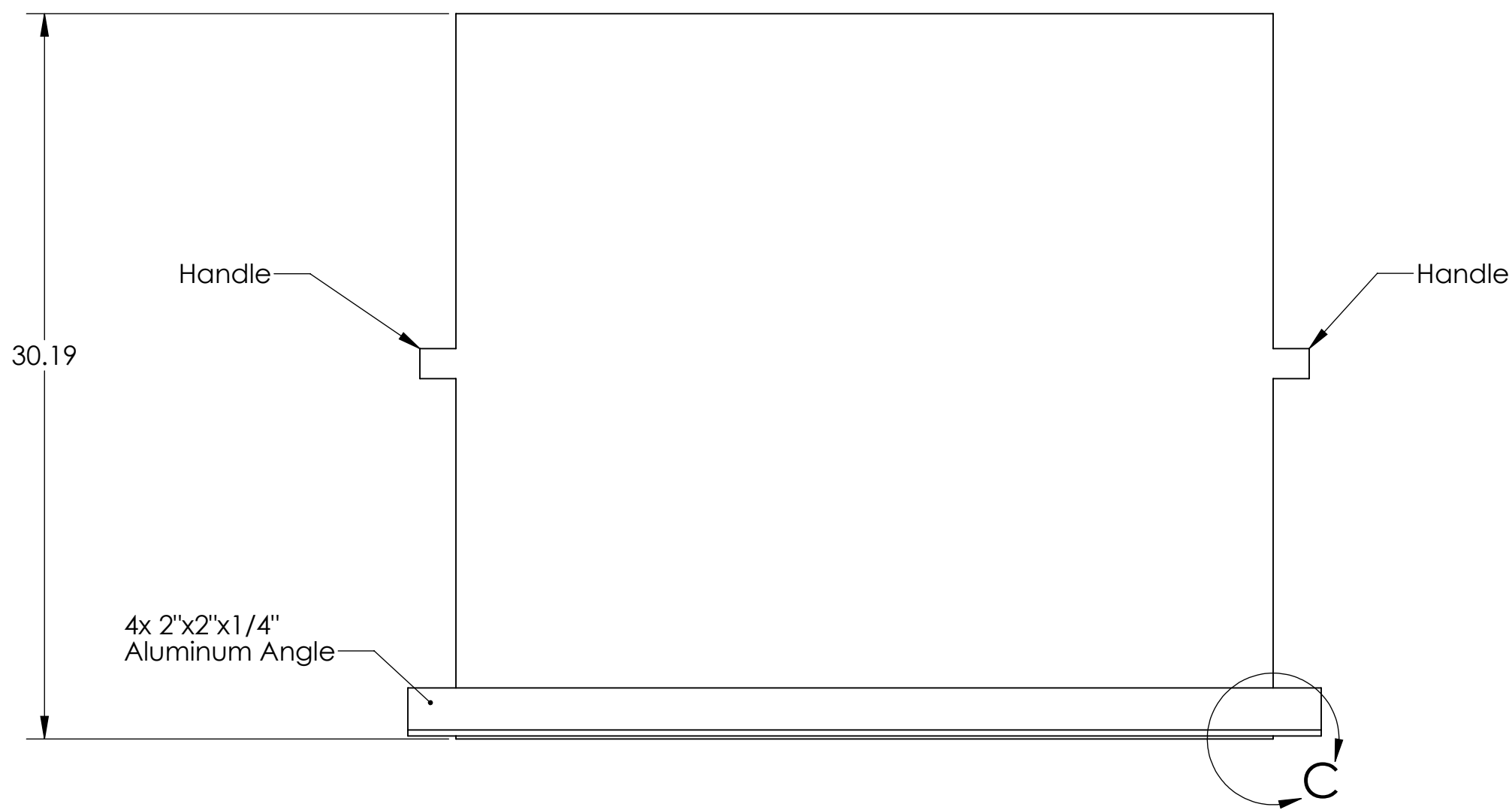
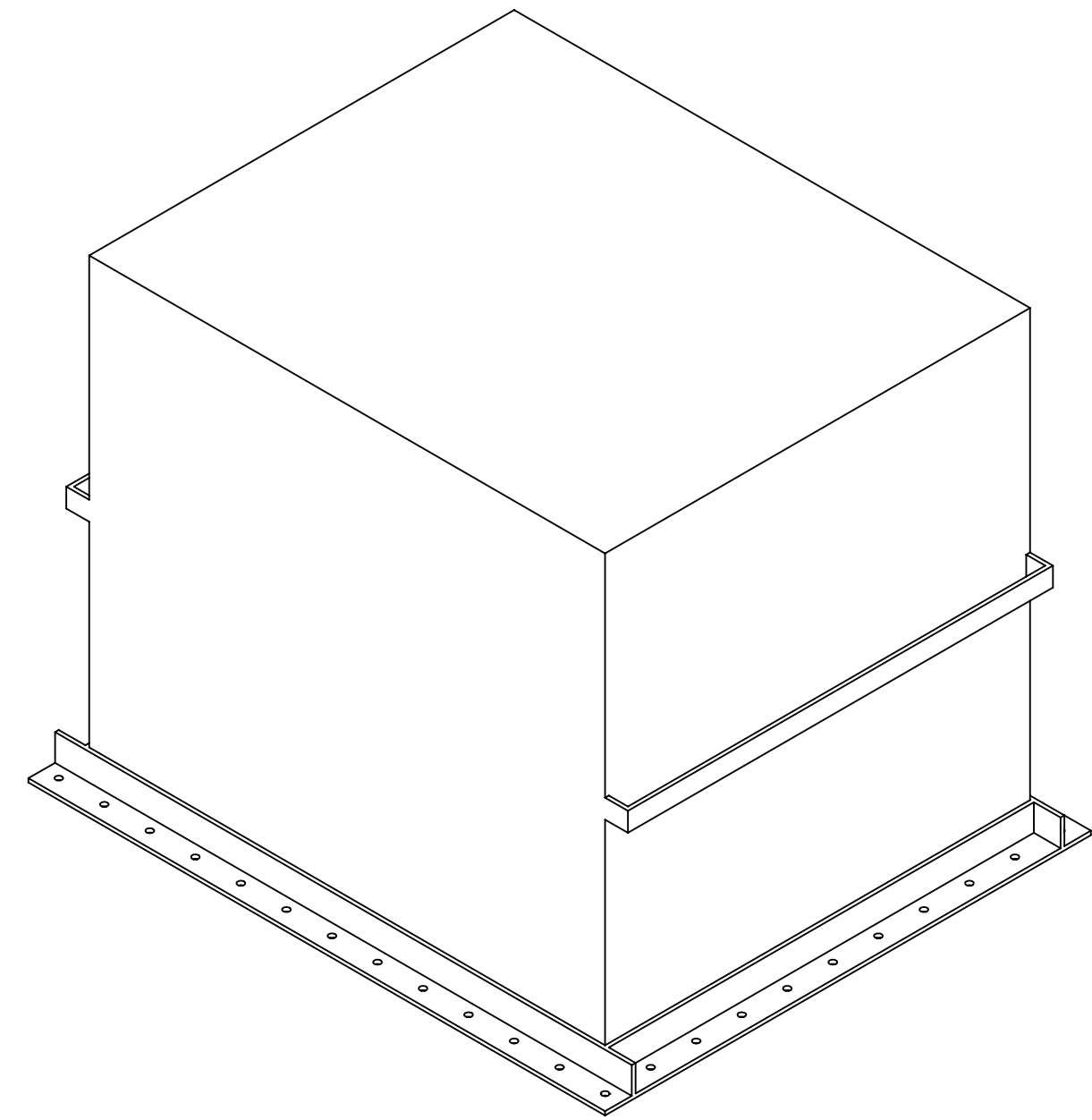
PART NAME		Upper Structure Storage Container				
SCALE: 1:8	PROJECTION:				SHEET 1 OF 3	

DIMENSIONS ARE IN
 TOLERANCES:
 .XX ±
 .XXX ±
 ANGULAR ± °

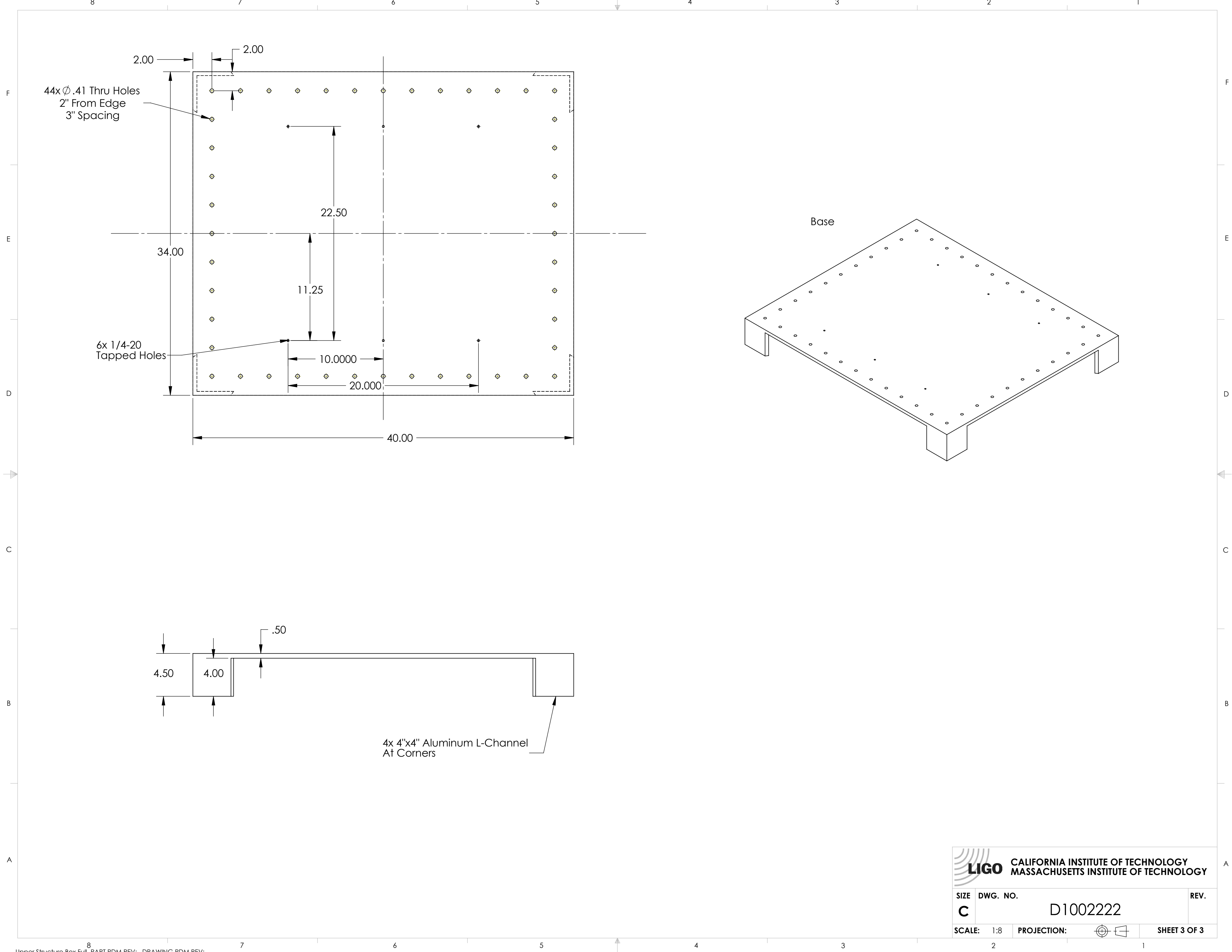



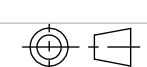
44 x \varnothing .41 Thru holes
1" From Edge
3" Spacing

Cover



 LIGO CALIFORNIA INSTITUTE OF TECHNOLOGY MASSACHUSETTS INSTITUTE OF TECHNOLOGY		REV.
SIZE C	DWG. NO. D1002222	1
SCALE: 1:8	PROJECTION:	SHEET 2 OF 3



 CALIFORNIA INSTITUTE OF TECHNOLOGY MASSACHUSETTS INSTITUTE OF TECHNOLOGY		
SIZE	DWG. NO.	REV.
C	D1002222	
SCALE: 1:8	PROJECTION:	
		SHEET 3 OF 3