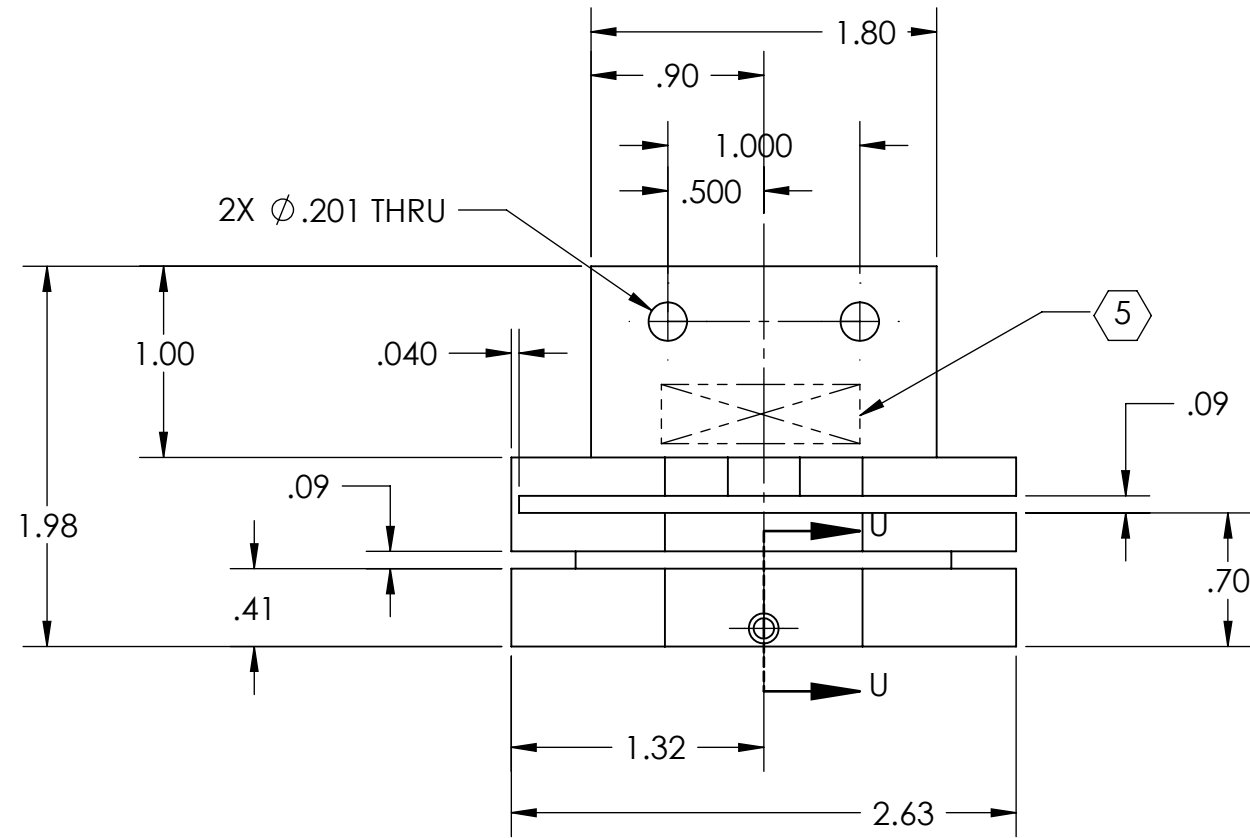
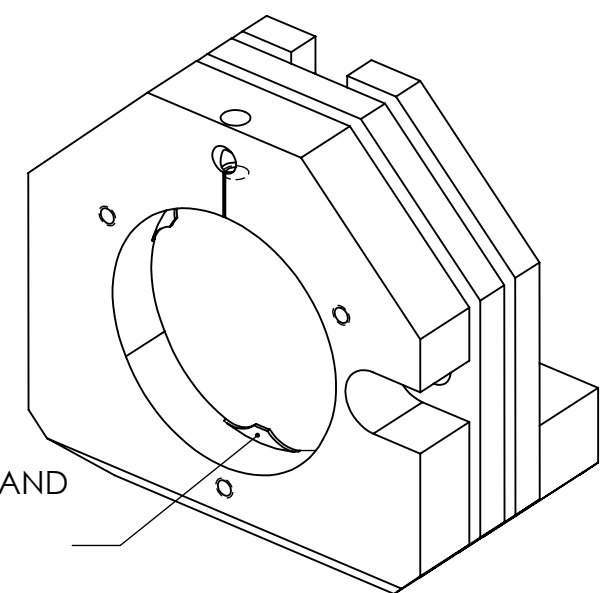
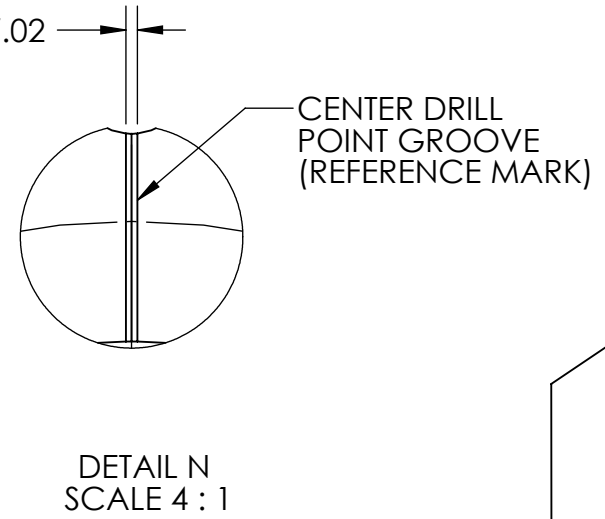
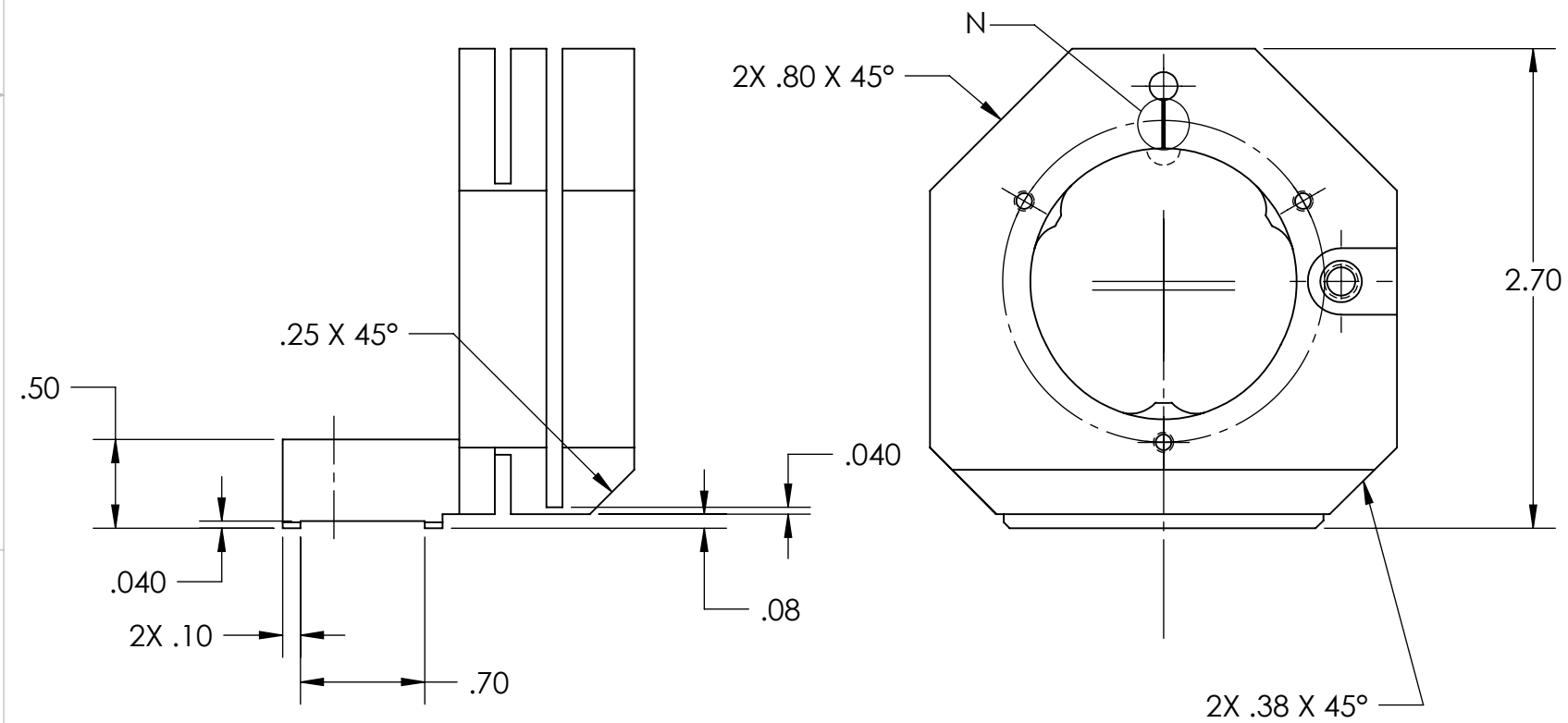
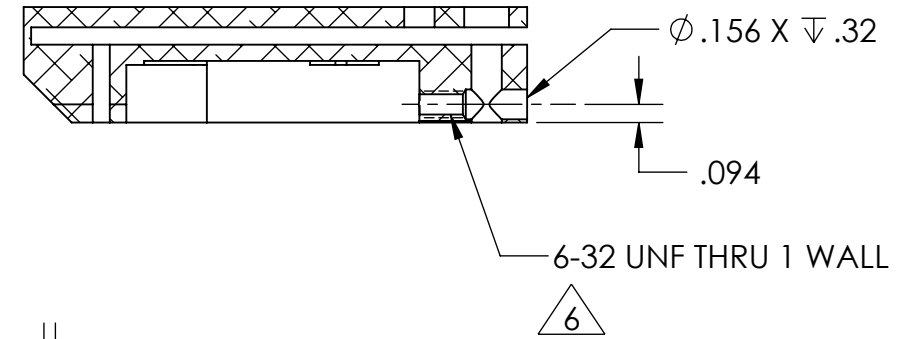


NOTES CONTINUED:
 5. SCRIBE, ENGRAVE, OR MECHANICALLY STAMP (NO DYES OR INKS) A UNIQUE THREE DIGIT SERIAL NUMBER & REVISION NUMBER ON EACH PART. SERIAL NUMBERS START AT 001 FOR THE FIRST ARTICLE AND PROCEED CONSECUTIVELY. BAG AND TAG PARTS WITH THEIR DRAWING PART NUMBER, REVISION, VARIANT OR "TYPE" (IF APPLICABLE), AND QUANTITY. IF PARTS ARE TOO SMALL TO SCRIBE, BAGGING AND TAGGING ALONE IS SUFFICIENT.
 EXAMPLE (PART): 001-v1
 EXAMPLE (TAG): DXXXXXX-VY, TYPE-XX, QTY: TBD

REV.	DATE	DCN #	DRAWING TREE #
v1	09/28/2010	E1000383	-
-	-	-	-
-	-	-	-



SECTION U-U



6 .005 OVERSIZE ALL THREADS.

7. ALL PARTS SHALL BE MANUFACTURED IN ACCORDANCE WITH LIGO SPECIFICATION E0900364.

DIMENSIONS ARE IN INCHES	
TOLERANCES:	.XX ± .01
	.XXX ± .005
ANGULAR ±	1.0°

NOTES AND TOLERANCES: (UNLESS OTHERWISE SPECIFIED)

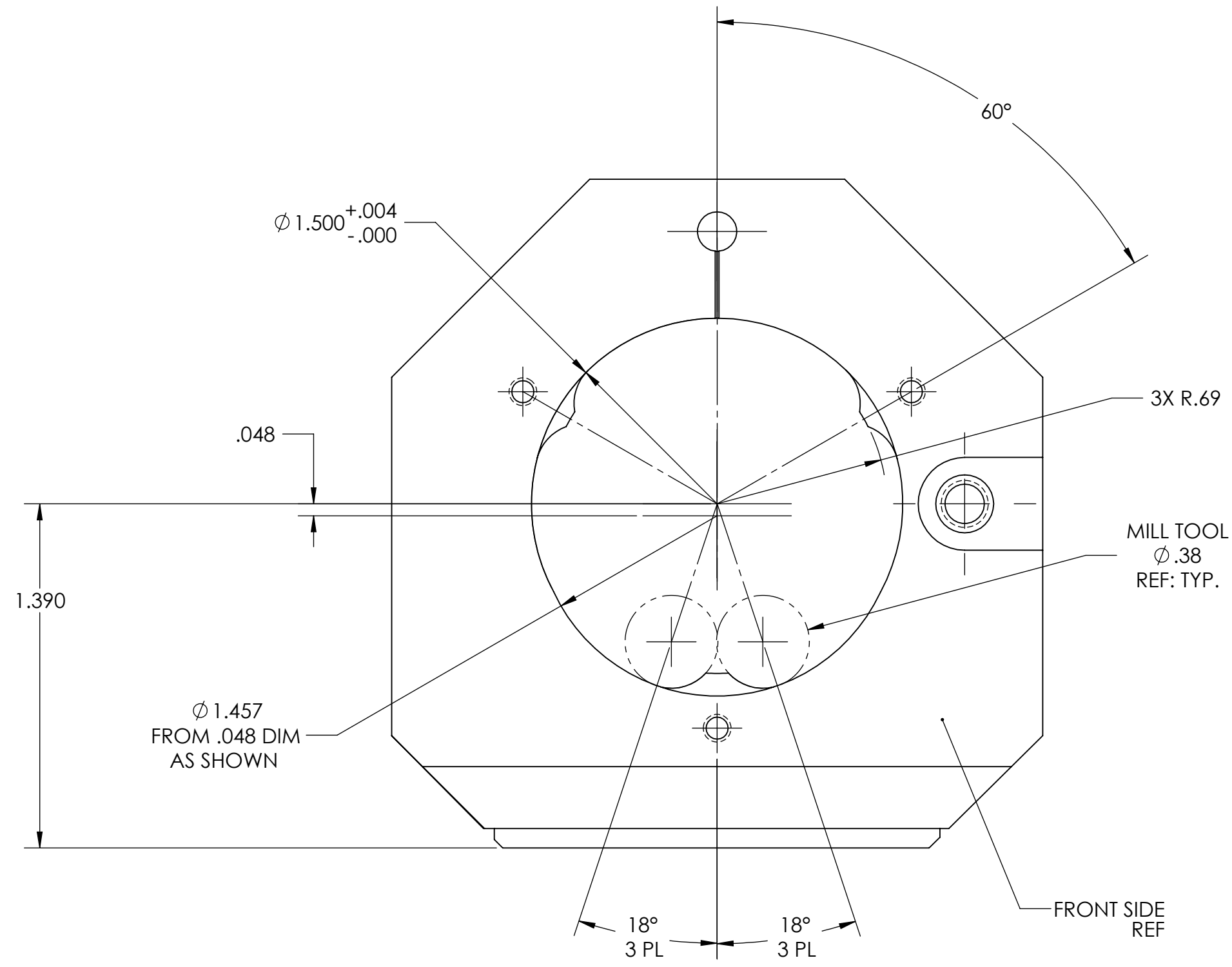
1. INTERPRET DRAWING PER ASME Y14.5-1994.
2. REMOVE ALL SHARP EDGES, R.02 MIN.
3. DO NOT SCALE FROM DRAWING.
4. ALL MACHINING FLUIDS MUST BE FULLY SYNTHETIC, FULLY WATER SOLUBLE AND FREE OF SULFUR, SILICONE, AND CHLORINE.

MATERIAL	6061-T6	FINISH	63 inch
----------	---------	--------	---------

CALIFORNIA INSTITUTE OF TECHNOLOGY MASSACHUSETTS INSTITUTE OF TECHNOLOGY	PART NAME		aLIGO TMS FLEXIBLE SEC MIRROR MOUNT	
	DESIGNER	K. MAILAND	08/12/2010	SIZE DWG. NO.
DRAFTER	M. MILLER	08/18/2010	B	D1002211
CHECKER				REV. v1
APPROVAL			SCALE: 1:1	PROJECTION: SHEET 1 OF 3

D1002211 aLIGO TMS FLEXIBLE SEC MIRROR MT, PART PDM REV: X-007, DRAWING PDM REV: X-021

D1002211 dLIGO TMS FLEXIBLE SEC MIRROR MT, PART PDM REV: X-007, DRAWING PDM REV: X-021



LIGO CALIFORNIA INSTITUTE OF TECHNOLOGY
 MASSACHUSETTS INSTITUTE OF TECHNOLOGY

SIZE	DWG. NO.	REV.
B	D1002211	v1
SCALE: 1:1	PROJECTION:	SHEET 3 OF 3