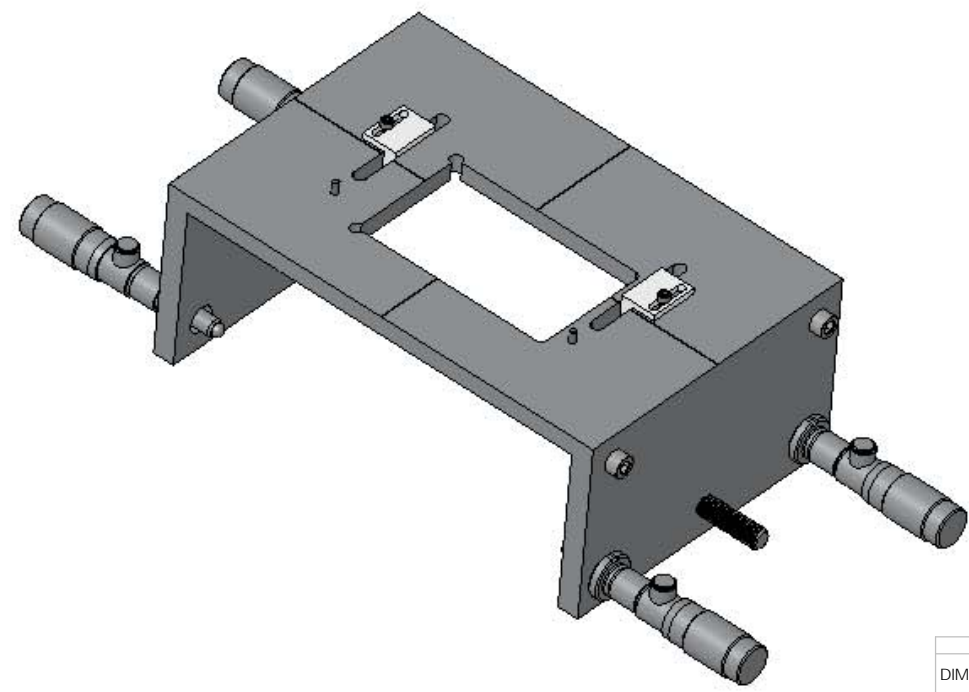
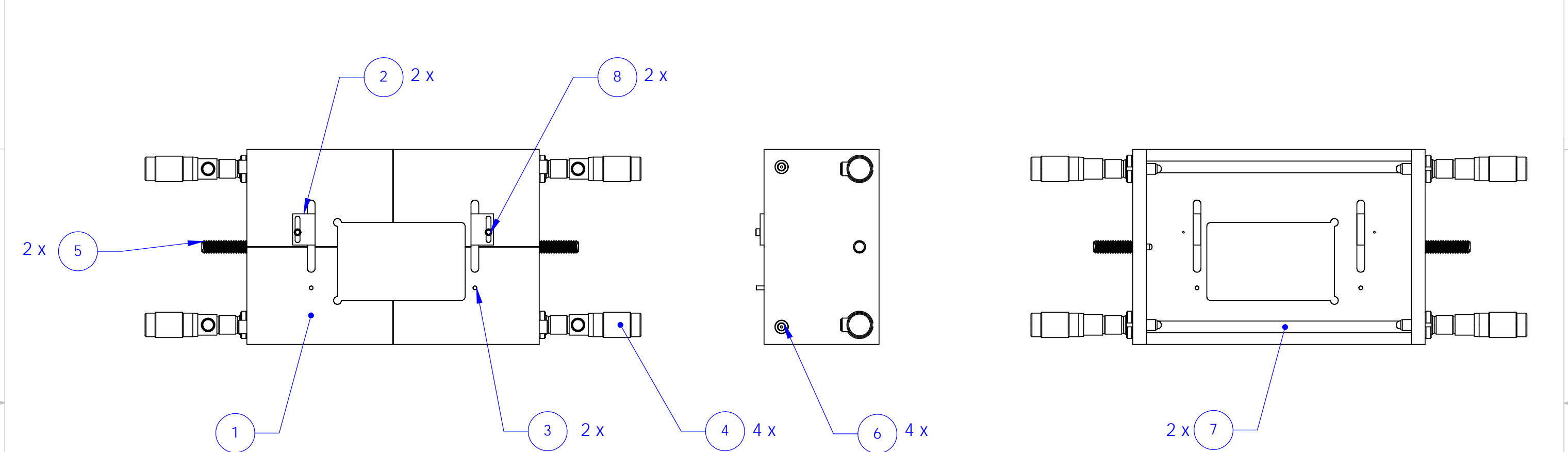


REV.	DATE	DCN #	DRAWING TREE #
v1	21/10/2010	-	-
-	-	-	-
-	-	-	-

NOTES CONTINUED:



ITEM NO.	PART NUMBER	DESCRIPTION	QTY.
1	D1002203	aLIGO ERM PRISM BONDING BASEPLATE	1
2	D1002143	aLIGO TCP Prism bonding alignment guide	2
3	91585A018	DOWEL PIN, ϕ 2 mm x 10 LONG (McMASTER-CARR P/N)	2
4	Newport-HR-13	LOCKABLE MICROMETER (NEWPORT CORPORATION)	4
5	8688A151	316 SS Round-Nose Spring Plunger Std L, 1/4"-20	2
6	92200A196	Socket Head Cap Screw, 8-32 x 5/8", 300 Series SS	4
7	D1002288	aLIGO ERM Prism bonding support cylinder	2
8	92185A078	Socket Head Cap Screw 2-56 x 5/16", 300 Series SS	2

NOTES AND TOLERANCES: (UNLESS OTHERWISE SPECIFIED)

1. INTERPRET DRAWING PER ASME Y14.5-1994.
 2. REMOVE ALL SHARP EDGES, R.5 MIN.
 3. DO NOT SCALE FROM DRAWING.
 4. ALL MACHINING FLUIDS MUST BE FULLY SYNTHETIC, FULLY WATER SOLUBLE AND FREE OF SULFUR, SILICONE, AND CHLORINE.

DIMENSIONS ARE IN N/A
 TOLERANCES:
 .XX ± N/A
 .XXX ± N/A
 ANGULAR ± N/A*

MATERIAL: N/A
 FINISH: N/A μ inch

LIGO CALIFORNIA INSTITUTE OF TECHNOLOGY
 MASSACHUSETTS INSTITUTE OF TECHNOLOGY

SYSTEM: aLIGO
 SUB-SYSTEM: SUS

PART NAME: aLIGO ERM PRISM BONDING FIXTURE

DESIGNER: M.v.Veggel 26/08/2010
 DRAFTER: M.v.Veggel 11/10/2010
 CHECKER: R.Jones 12/10/2010
 APPROVAL:

SIZE: B
 DWG. NO.: D1002202
 REV.: v1

SCALE: 1:2
 PROJECTION: SHEET 1 OF 1

D1002202_aLIGO_ERM_PRISM_BONDING_FIXTURE, PART PDM REV: v1, DRAWING PDM REV: