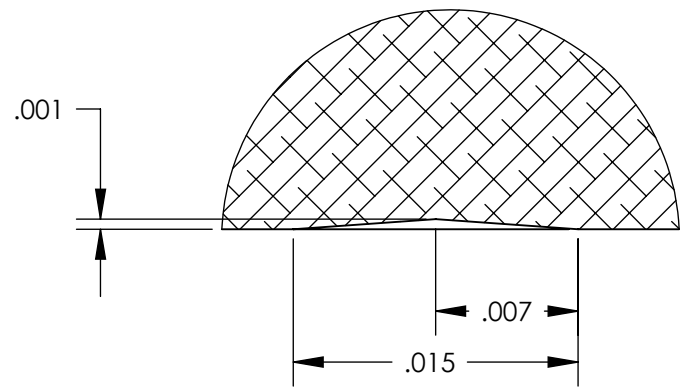
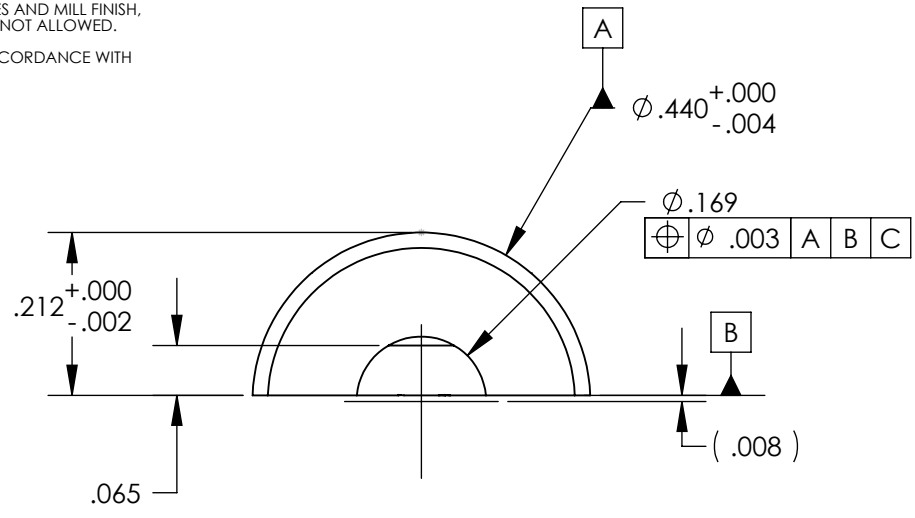


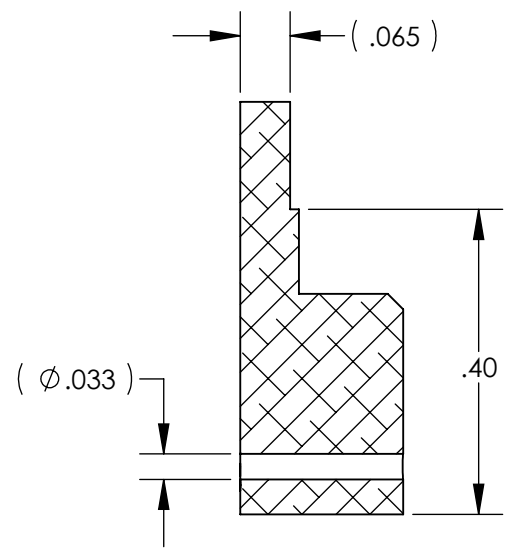
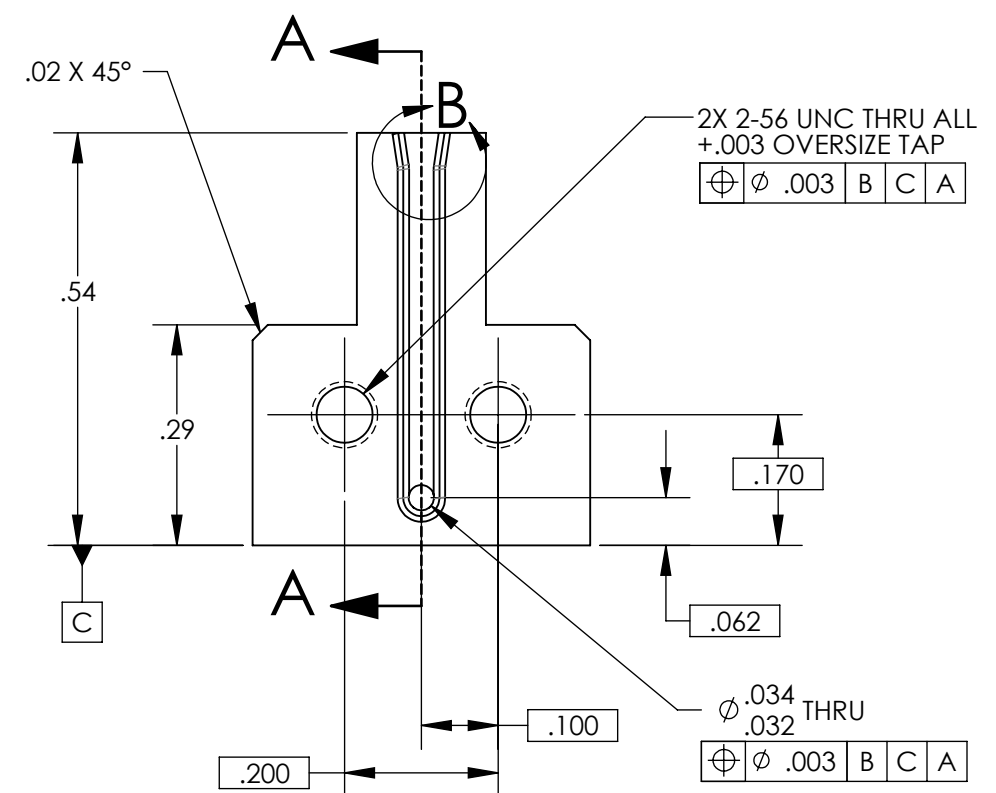
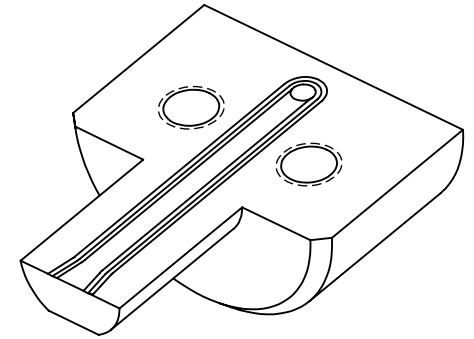
NOTES CONTINUED:
 5. SCRIBE, ENGRAVE, OR MECHANICALLY STAMP (NO DYES OR INKS) A UNIQUE THREE DIGIT SERIAL NUMBER & REVISION NUMBER ON EACH PART. SERIAL NUMBERS START AT 001 FOR THE FIRST ARTICLE AND PROCEED CONSECUTIVELY. BAG AND TAG PARTS WITH THEIR DRAWING PART NUMBER, REVISION, VARIANT OR "TYPE" (IF APPLICABLE), AND QUANTITY. IF PARTS ARE TOO SMALL TO SCRIBE, BAGGING AND TAGGING ALONE IS SUFFICIENT.
 EXAMPLE (PART): 001-v1
 EXAMPLE (TAG): DXXXXXX-VY, TYPE-XX, QTY: TBD

REV.	DATE	DCN #	DRAWING TREE #
v1	07 OCT 2010	E1000563	
v2	28 FEB 2011	E1000563	

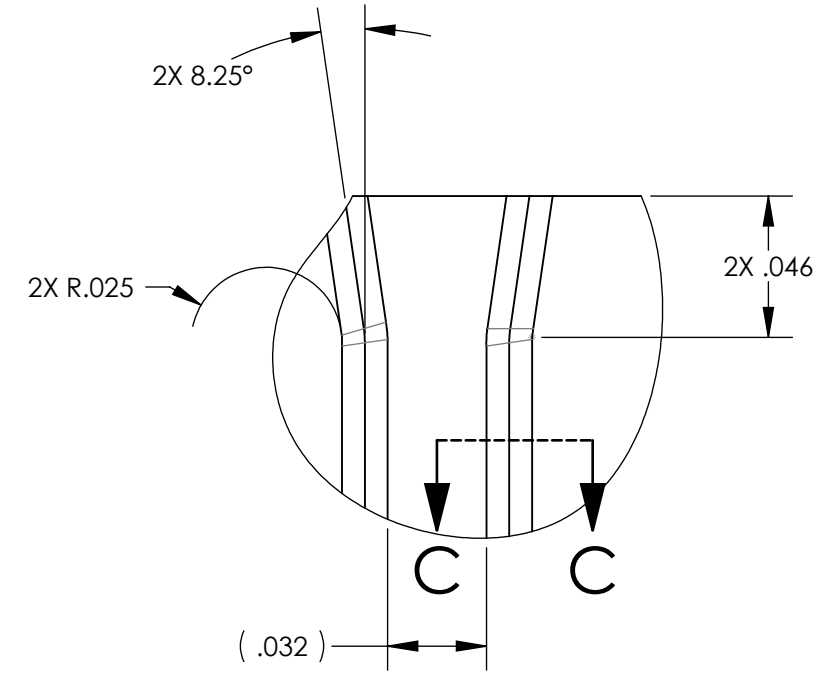
D 6. MACHINE ALL SURFACES TO REMOVE OXIDES AND MILL FINISH. USE OF ABRASIVE REMOVAL TECHNIQUES IS NOT ALLOWED.
 7. ALL PARTS SHALL BE MANUFACTURED IN ACCORDANCE WITH LIGO SPECIFICATION E0900364.



DETAIL C
SCALE 100 : 1



SECTION A-A



DETAIL B
SCALE 16 : 1

D1002168_AdlIGO_AOS_Music Wire Split Clamp 3, PART PDM REV: X-009, DRAWING PDM REV: X-008

NOTES AND TOLERANCES: (UNLESS OTHERWISE SPECIFIED)				LIGO CALIFORNIA INSTITUTE OF TECHNOLOGY MASSACHUSETTS INSTITUTE OF TECHNOLOGY		PART NAME	
DIMENSIONS ARE IN TOLERANCES: .XX ± .005 .XXX ± .002 ANGULAR ± .5°				1. INTERPRET DRAWING PER ASME Y14.5-1994. 2. REMOVE ALL SHARP EDGES, R.02 MIN. 3. DO NOT SCALE FROM DRAWING. 4. ALL MACHINING FLUIDS MUST BE FULLY SYNTHETIC, FULLY WATER SOLUBLE AND FREE OF SULFUR, SILICONE, AND CHLORINE.		MUSIC WIRE SPLIT CLAMP 3	
MATERIAL 304, 316 OR 302 SSSL		FINISH 63 μinch		NEXT ASSY D0900586		DESIGNER M.RUIZ	
ADVANCED LIGO		SUB-SYSTEM AOS		DATE 24 SEP 2010		SIZE DWG. NO. B D1002168	
APPROVAL		APPROVAL		SCALE: 4:1 PROJECTION:		REV. v2	
						SHEET 1 OF 1	