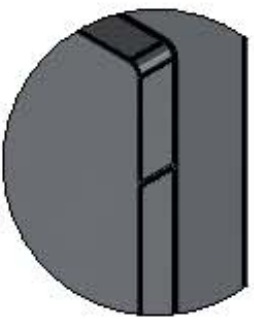
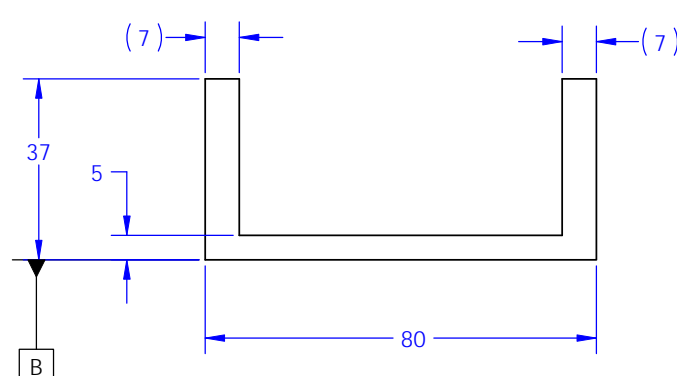
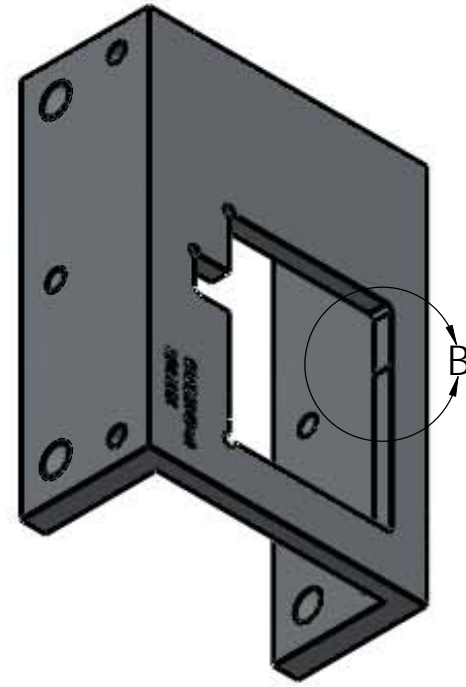
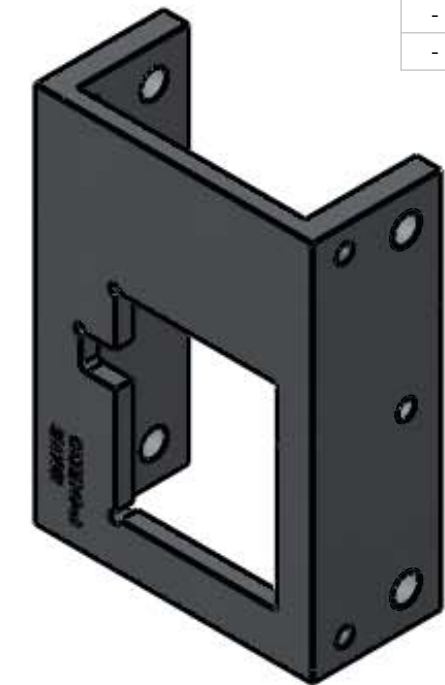
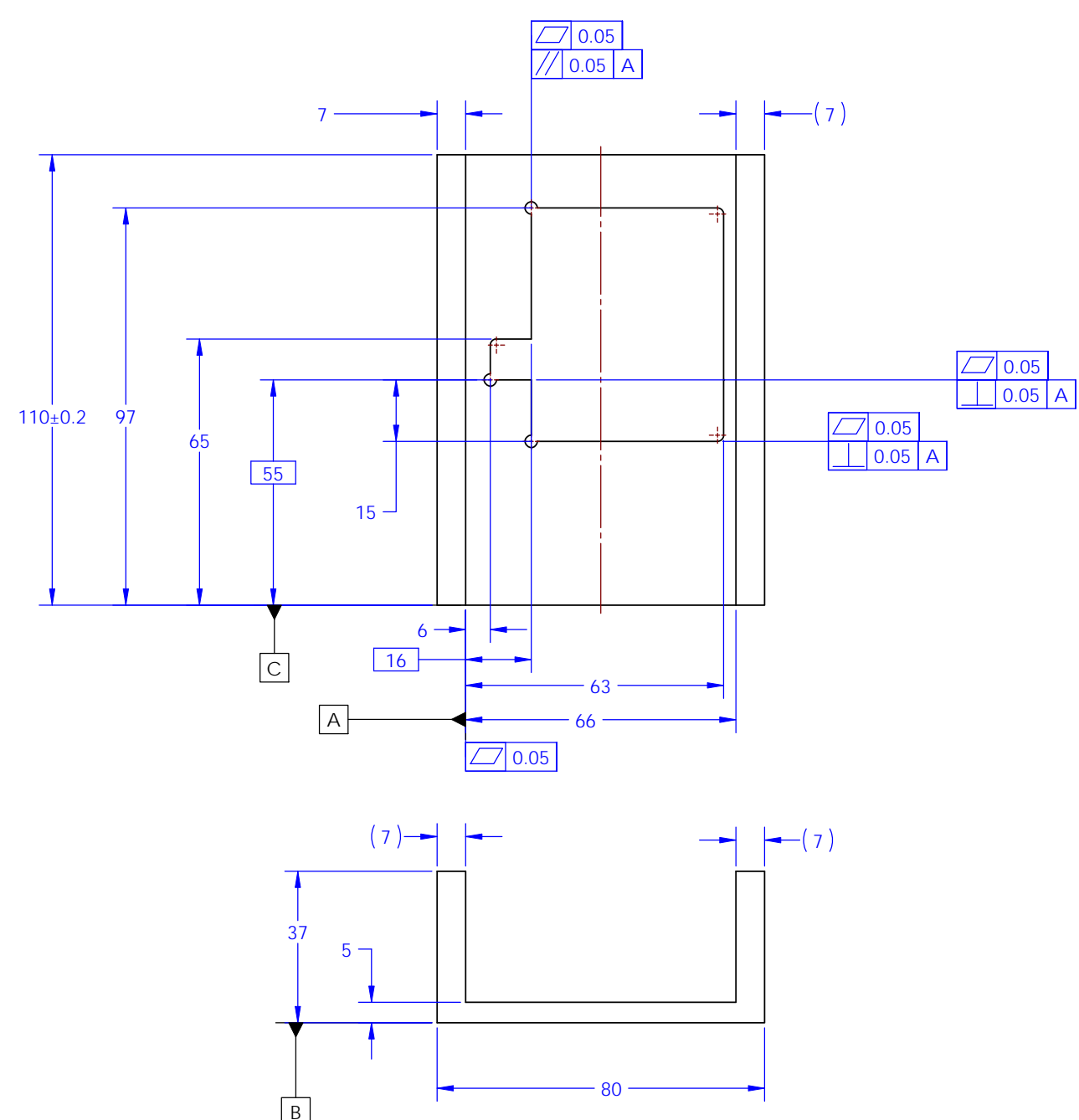
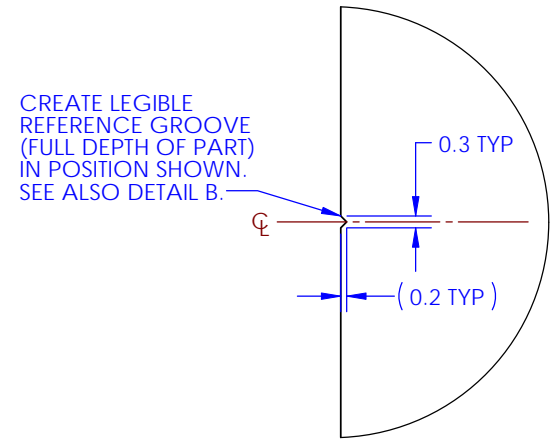
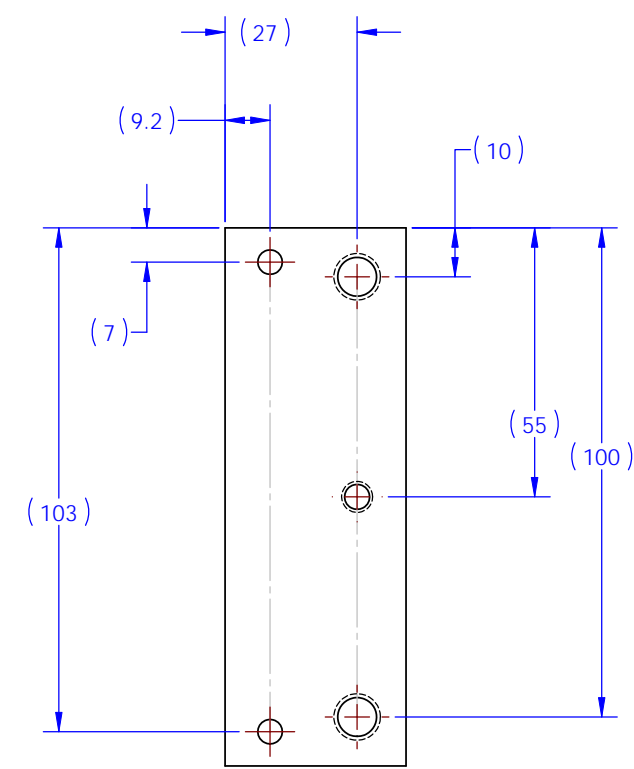
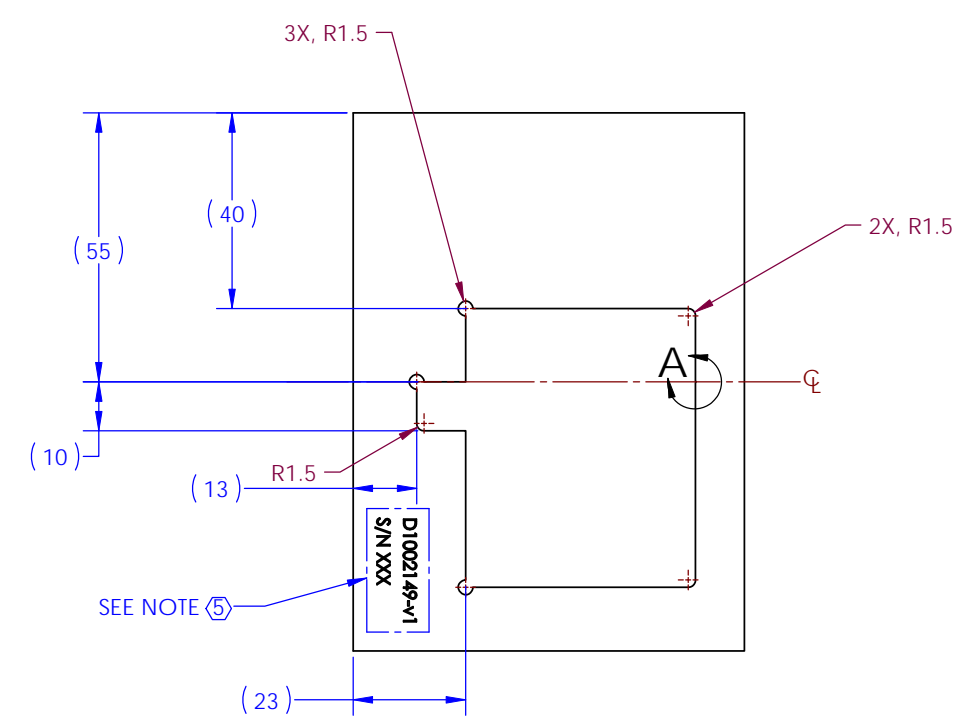
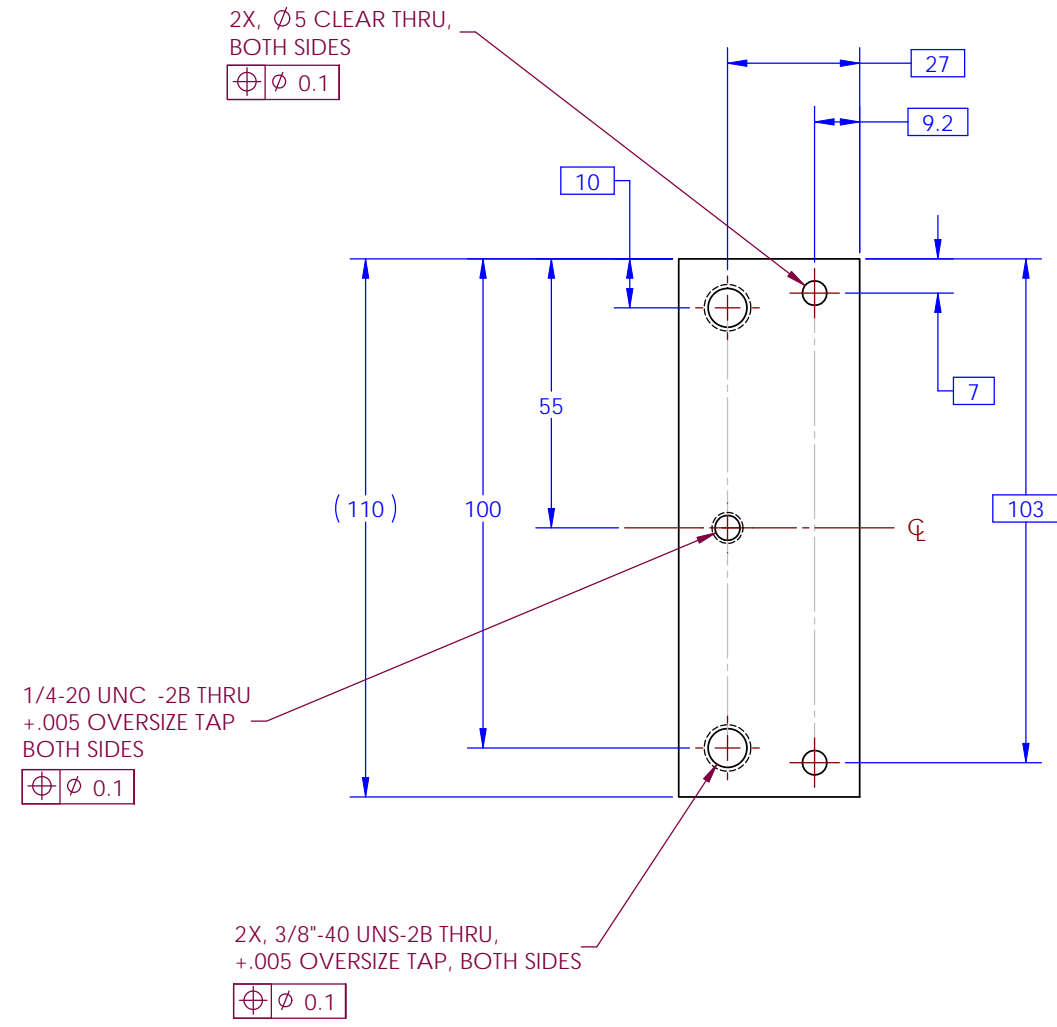


NOTES CONTINUED:
 ⑤ SCRIBE, ENGRAVE, OR MECHANICALLY STAMP (NO INKS OR DYES) DRAWING PART NUMBER, REVISION (AND VARIANT OR "TYPE" IF APPLICABLE) ON NOTED SURFACE OF PART FOLLOWED ON THE NEXT LINE WITH A THREE DIGIT SERIAL NUMBER. SERIAL NUMBERS START AT 001 FOR THE FIRST ARTICLE AND PROCEED CONSECUTIVELY. USE MINIMUM 0.12" HIGH CHARACTERS, UNLESS THE SIZE OF THE PART DICTATES SMALLER CHARACTERS. A VIBRATORY TOOL MAY BE USED. EXAMPLE: DXXXXXX-VY, TYPE-XX, S/N XXX

REV.	DATE	DCN #	DRAWING TREE #
-	-	-	-
-	-	-	-
-	-	-	-



DETAIL B SCALE 2 : 1



DETAIL A SCALE 8 : 1

DIMENSIONS ARE IN MILLIMETERS		NOTES AND TOLERANCES: (UNLESS OTHERWISE SPECIFIED)		LIGO CALIFORNIA INSTITUTE OF TECHNOLOGY MASSACHUSETTS INSTITUTE OF TECHNOLOGY		PART NAME	
TOLERANCES: X ± 0.1 .XX ± 0.05		1. INTERPRET DRAWING PER ASME Y14.5-1994. 2. REMOVE ALL SHARP EDGES, R.5 MIN. 3. DO NOT SCALE FROM DRAWING. 4. ALL MACHINING FLUIDS MUST BE FULLY SYNTHETIC, FULLY WATER SOLUBLE AND FREE OF SULFUR, SILICONE, AND CHLORINE.		SYSTEM aLIGO SUS		SUB-SYSTEM BS/FM	
ANGULAR ± 0.2°		MATERIAL 6061-T6 Al		NEXT ASSY D1002148		DESIGNER M.V. VEGGEL 12/08/2010	
		FINISH 1.6 µm				DRAFTER R. JONES OCT10	
						CHECKER M.V. VEGGEL 21 OCT 10	
						APPROVAL - -	
						SIZE D DWG. NO. D1002149	
						SCALE: 1:1 PROJECTION: 1	
						REV. v1 SHEET 1 OF 1	

D1002149_BSLIGO_BSFM_PRISM_BONDING_BASEPLATE_PART PDM REV. V1_DRAWING PDM REV.