

4

3

2

1

NOTES CONTINUED:

⑤ SCRIBE, ENGRAVE, OR MECHANICALLY STAMP (NO INKS OR DYES) DRAWING PART NUMBER AND REVISION ON NOTED SURFACE FOLLOWED ON THE NEXT LINE BY A THREE DIGIT SERIAL NUMBER. SERIAL NUMBERS START AT 001 FOR THE FIRST ARTICLE AND PROCEED CONSECUTIVELY. USE .07" HIGH CHARACTERS. EXAMPLE: DXXXXXX-VY, S/N 001. A VIBRATORY TOOL MAY BE USED.

REV.	DATE	DCN #	DRAWING TREE #
v1	21/10/2010	-	-
-	-	-	-
-	-	-	-

D

D

C

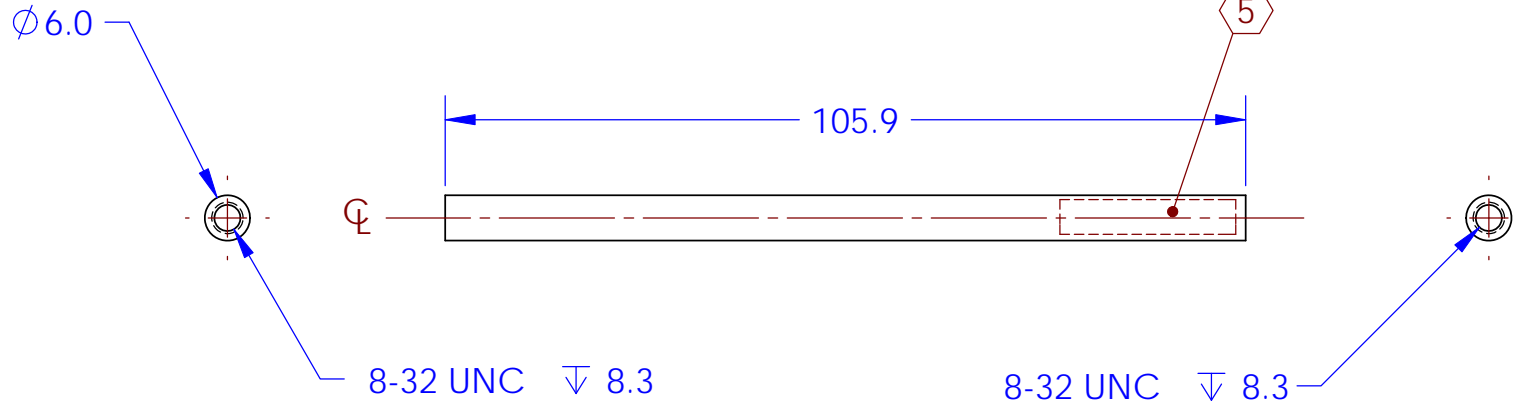
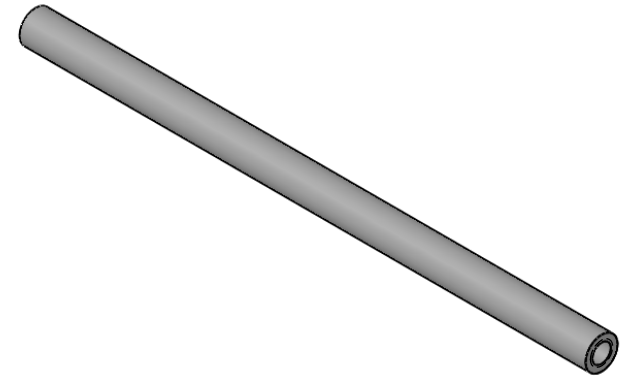
C

B

B

A

A



NOTES AND TOLERANCES: (UNLESS OTHERWISE SPECIFIED)

DIMENSIONS ARE IN mm

TOLERANCES:

X ± 0.1
XX ± 0.01

ANGULAR $\pm 0.2^\circ$

1. INTERPRET DRAWING PER ASME Y14.5-1994.
2. REMOVE ALL SHARP EDGES, R.5 MIN.
3. DO NOT SCALE FROM DRAWING.
4. ALL MACHINING FLUIDS MUST BE FULLY SYNTHETIC, FULLY WATER SOLUBLE AND FREE OF SULFUR, SILICONE, AND CHLORINE.

MATERIAL

PTFE (general)

FINISH

1.6 μ m



CALIFORNIA INSTITUTE OF TECHNOLOGY
MASSACHUSETTS INSTITUTE OF TECHNOLOGY

SYSTEM

aLIGO

SUB-SYSTEM

SUS

NEXT ASSY

D1002141

PART NAME

aLIGO TCP Prism bonding support cylinder

DESIGNER M. van Veggel 13/08/2010

DRAFTER M.v.Veggel 11/10/2010

CHECKER R.Jones 14/10/2010

APPROVAL

SIZE DWG. NO.

A

D1002144

REV.

v1

SCALE: 1:1

PROJECTION:



SHEET 1 OF 1

4

3

2

1