

4

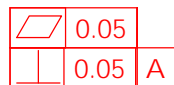
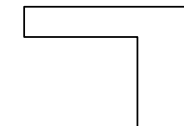
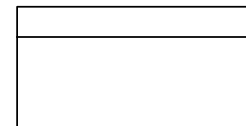
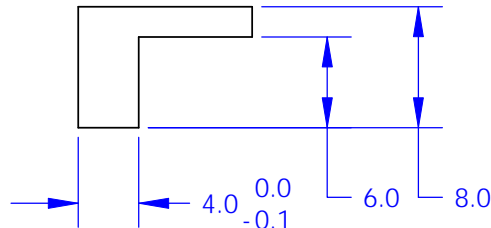
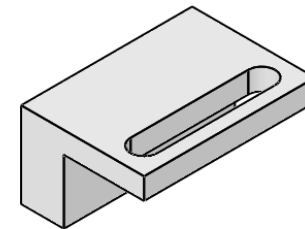
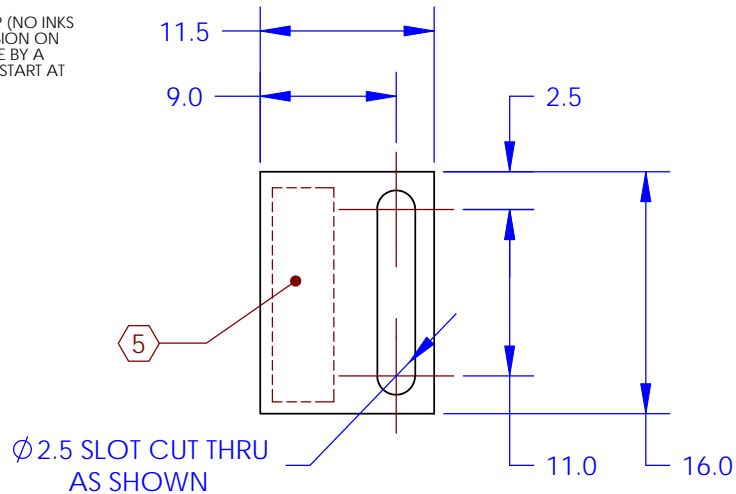
3

2

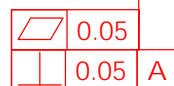
1

NOTES CONTINUED:

⑤ SCRIBE, ENGRAVE, OR MECHANICALLY STAMP (NO INKS OR DYES) DRAWING PART NUMBER AND REVISION ON NOTED SURFACE FOLLOWED ON THE NEXT LINE BY A THREE DIGIT SERIAL NUMBER. SERIAL NUMBERS START AT 001 FOR THE FIRST ARTICLE AND PROCEED CONSECUTIVELY. USE .07" HIGH CHARACTERS. EXAMPLE: DXXXXXXX-VY, S/N 001. A VIBRATORY TOOL MAY BE USED.



A



DIMENSIONS ARE IN mm

TOLERANCES:
X ± 0.1
XX ± 0.01

ANGULAR ± 0.2°

NOTES AND TOLERANCES: (UNLESS OTHERWISE SPECIFIED)

1. INTERPRET DRAWING PER ASME Y14.5-1994.
2. REMOVE ALL SHARP EDGES, R.5 MIN.
3. DO NOT SCALE FROM DRAWING.
4. ALL MACHINING FLUIDS MUST BE FULLY SYNTHETIC, FULLY WATER SOLUBLE AND FREE OF SULFUR, SILICONE, AND CHLORINE.

MATERIAL
Polyetheretherketone (PEEK)

FINISH
1.6 µm



CALIFORNIA INSTITUTE OF TECHNOLOGY
MASSACHUSETTS INSTITUTE OF TECHNOLOGY

SYSTEM

aLIGO

SUB-SYSTEM

SUS

NEXT ASSY

D1002141

PART NAME

aLIGO TCP Prism bonding alignment guide

DESIGNER M. van Veggel 13/08/2010

DRAFTER M.v.Veggel 04/10/2010

CHECKER R.Jones 14/10/2010

APPROVAL

SIZE DWG. NO.

A

D1002143

REV.

v1

SCALE: 2:1

PROJECTION:



SHEET 1 OF 1

4

3

2

1