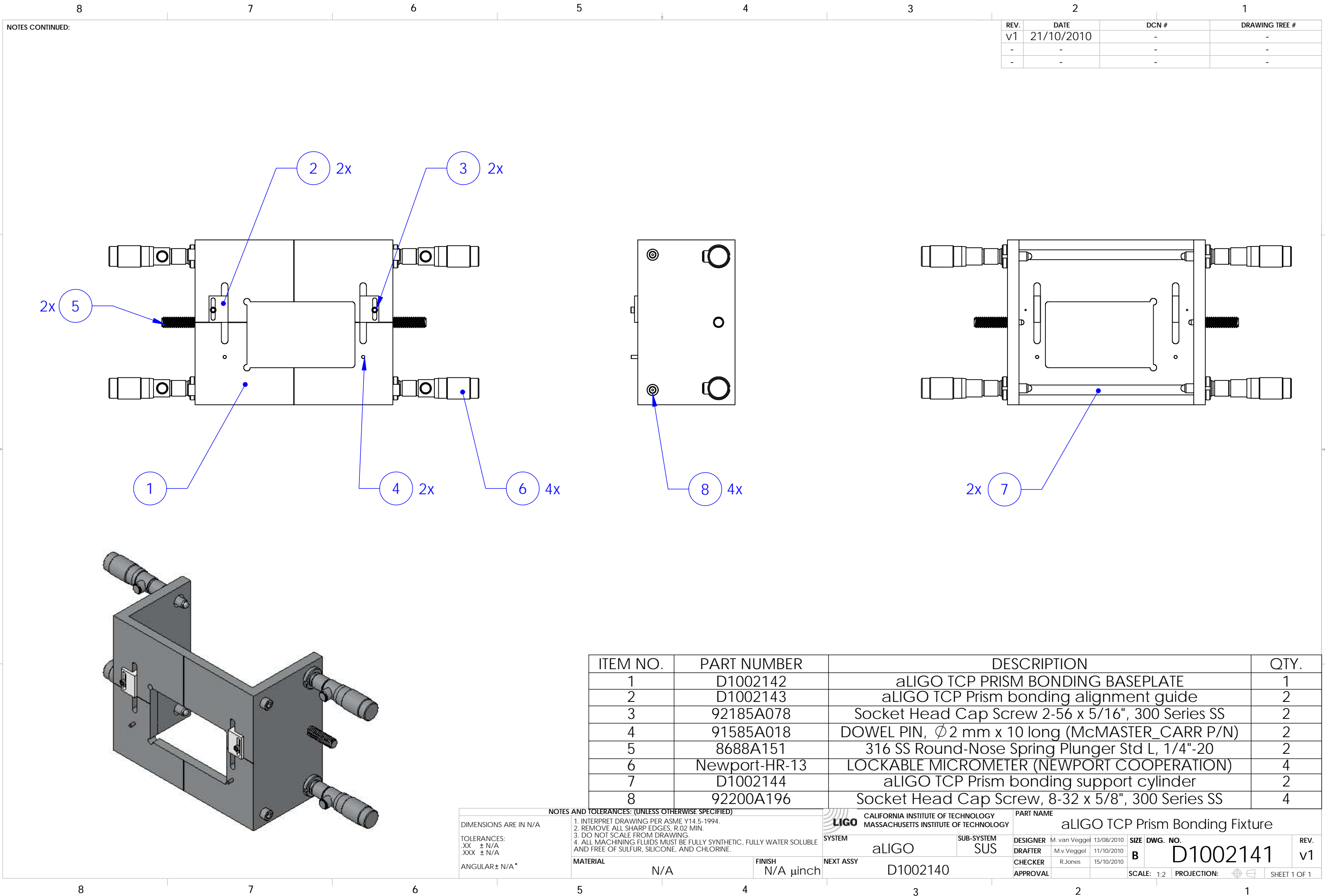


D1002141\_aLIGO\_TCP\_PRISM\_BONDING\_FIXTURE, PART PDM REV: v1, DRAWING PDM REV:



REV.	DATE	DCN #	DRAWING TREE #
v1	21/10/2010	-	-
-	-	-	-
-	-	-	-

ITEM NO.	PART NUMBER	DESCRIPTION	QTY.
1	D1002142	aLIGO TCP PRISM BONDING BASEPLATE	1
2	D1002143	aLIGO TCP Prism bonding alignment guide	2
3	92185A078	Socket Head Cap Screw 2-56 x 5/16", 300 Series SS	2
4	91585A018	DOWEL PIN, $\phi$ 2 mm x 10 long (McMASTER_CARR P/N)	2
5	8688A151	316 SS Round-Nose Spring Plunger Std L, 1/4"-20	2
6	Newport-HR-13	LOCKABLE MICROMETER (NEWPORT COOPERATION)	4
7	D1002144	aLIGO TCP Prism bonding support cylinder	2
8	92200A196	Socket Head Cap Screw, 8-32 x 5/8", 300 Series SS	4

**NOTES AND TOLERANCES: (UNLESS OTHERWISE SPECIFIED)**

- INTERPRET DRAWING PER ASME Y14.5-1994.
- REMOVE ALL SHARP EDGES, R.02 MIN.
- DO NOT SCALE FROM DRAWING.
- ALL MACHINING FLUIDS MUST BE FULLY SYNTHETIC, FULLY WATER SOLUBLE AND FREE OF SULFUR, SILICONE, AND CHLORINE.

DIMENSIONS ARE IN N/A  
TOLERANCES:  
.XX ± N/A  
.XXX ± N/A  
ANGULAR ± N/A\*

<b>MATERIAL</b>	N/A	<b>FINISH</b>	N/A $\mu$ inch
-----------------	-----	---------------	----------------

**SYSTEM** aLIGO    **SUB-SYSTEM** SUS    **PART NAME** aLIGO TCP Prism Bonding Fixture

<b>DESIGNER</b>	M. van Veggel	13/08/2010	<b>SIZE</b>	<b>DWG. NO.</b>	<b>REV.</b>
<b>DRAFTER</b>	M.v.Veggel	11/10/2010	<b>B</b>	<b>D1002141</b>	<b>v1</b>
<b>CHECKER</b>	R.Jones	15/10/2010	<b>SCALE:</b>	<b>PROJECTION:</b>	<b>SHEET 1 OF 1</b>
<b>APPROVAL</b>			1:2		