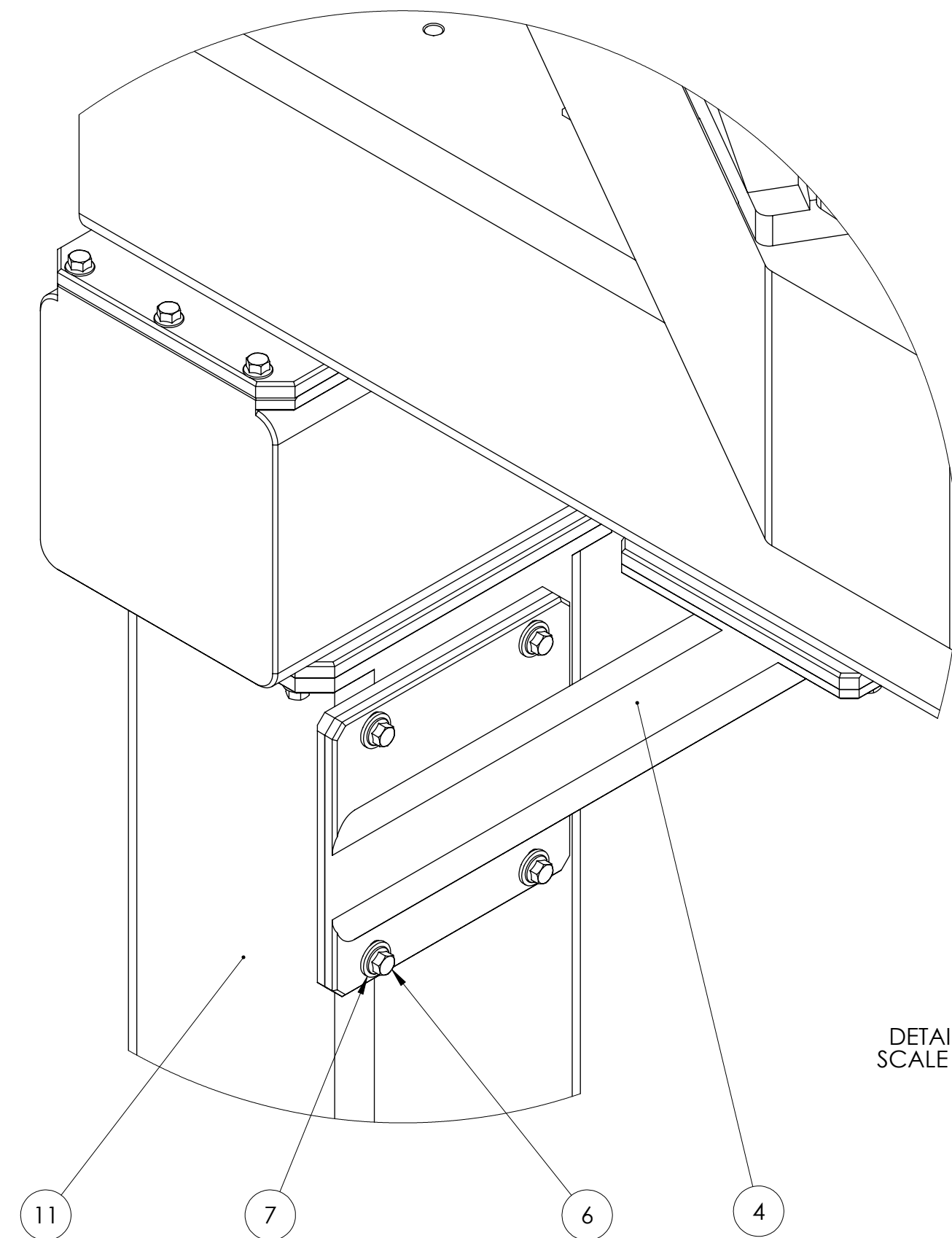
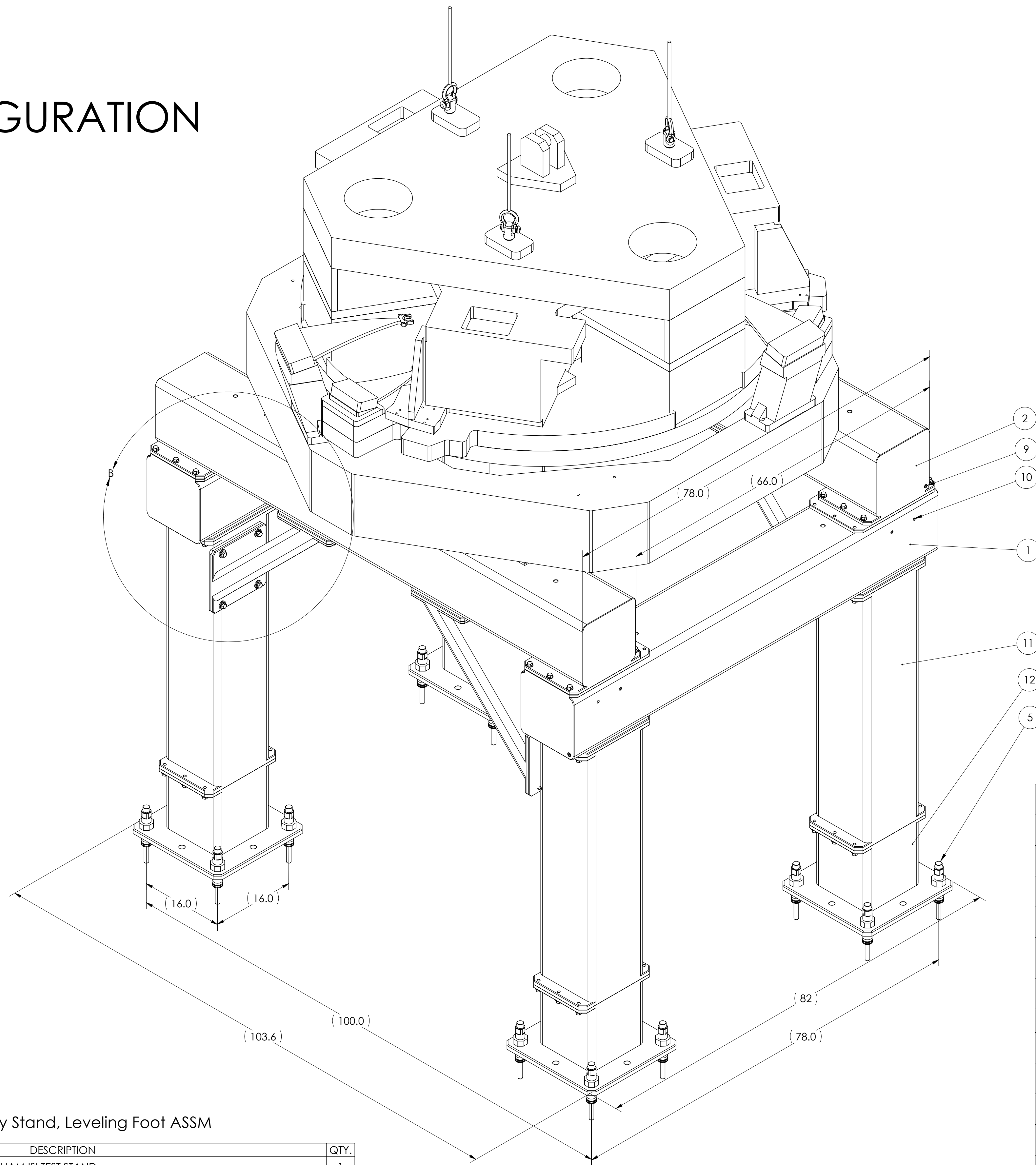
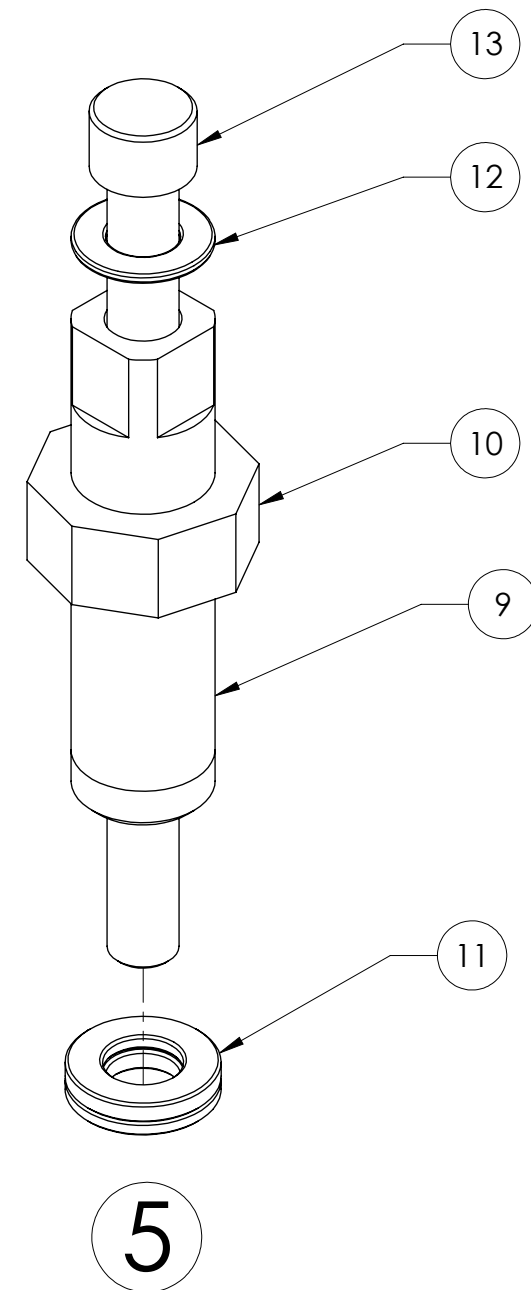


BSC CONFIGURATION

REV.	DATE	DCN #	DRAWING TREE #
V2	20 OCT 2010	E1000340	



DETAIL B
SCALE 1:5

5 Test/Assembly Stand, Leveling Foot ASSM

ITEM NO.	PART NUMBER	DESCRIPTION	QTY.
9	D050331	LEVELING FOOT THRU-BOLT FOR THE BSC-HAM ISI TEST STAND	1
10	D050332	Test/Assembly Stand, Leveling foot, Nut	1
11	McM_91131A090	McMaster 91131A090 Black Oxide Steel Self-Aligning Setup Washer Set, 3/4" Size, 25/32" Male ID	1
12	McM_90126A036	McMaster 90126A036 SAE Flat Washer 3/4" Size, 13/16" ID, 1-1/2" OD, .108" min Thk Zinc-Plated Steel	1
13	McMaster 91257A866	McMaster 91257A866 Grade 8 Hex Head Cap Screw Zinc Yellow-Plated, 3/4"-10 Thread, 10" Length	1

ITEM NO.	PART NUMBER	DESCRIPTION	MATERIAL	QTY.	SPARE	TOTAL
12	D1002661	Foot, Stand, Test, BSC-ISI+Quad + HAM-ISI, aLIGO	ASTM a500 Grade-B	4	0	0
11	D1002727	Left Leg, Stand, Test Stand, BSC-QUAD + HAM, ISIs, aLIGO	ASTM a500 Grade-B	2	0	0
10	McMaster 94105A708	Set Screw 1/2"-13 x 5/8"	Alloy Steel	8	0	0
9	McMaster 91375A832	Set Screw 3/4"-10 x 5/8" Steel	Alloy Steel	4	0	0
8	D0901182	BSC-ISI aLIGO	Material <not specified>	1	0	0
7	McMaster 93852A113	Washer ID.563 OD1.375 T.11 18-8SST	18-8 SSTL	32	0	0
6	McMaster 92316A754	1/2"-20 x 1-1/2" Grade 8 Hex-flange Cap Screw	Plain Carbon Steel	104	0	0
5	D080464 LEVELING FOOT	Test/Assembly Stand, Leveling Foot ASSM	N/A	16	0	0
4	D050263	Test/Assembly Stand, Gusset	ASTM a500 Grade-B	4	0	0
3	D1002126	Right Leg, Stand, Test, BSC-QUAD + HAM, ISIs, aLIGO	ASTM a500 Grade-B	2	0	0
2	D1002127	Support Tube, Stand, Test, BSC-ISI+Quad + HAM-ISI, aLIGO	ASTM a500 Grade-B	2	0	0
1	D1002125	Cross Brace, Stand, Test, BSC-ISI+Quad + HAM-ISI, aLIGO	ASTM a500 Grade-B	2	0	0
ITEM NO.	PART NUMBER	DESCRIPTION	MATERIAL	QTY.	SPARE	TOTAL

PARTS LIST

NOTES AND TOLERANCES: (UNLESS OTHERWISE SPECIFIED)

DIMENSIONS ARE IN INCHES

LIGO CALIFORNIA INSTITUTE OF TECHNOLOGY
MASSACHUSETTS INSTITUTE OF TECHNOLOGY

SYSTEM: ADVANCED LIGO SUB-SYSTEM: SEI

PART NAME: Stand, Test, BSC-ISI+Quad + HAM-ISI, aLIGO

DESIGNER: SBARNUM 10 AUG 2010 SIZE: D DWG. NO.: D1002124 REV.: v2

DRAFTER: sbarnum 18 AUG 2010

CHECKER: kmason

APPROVAL: [Signature]

SCALE: 1:20 PROJECTION: [Symbol] SHEET 1 OF 2

D1002124 Stand, Test, BSC-ISI+Quad + HAM-ISI, aLIGO. PART PDM REV: X-004. DRAWING PDM REV: X-001

