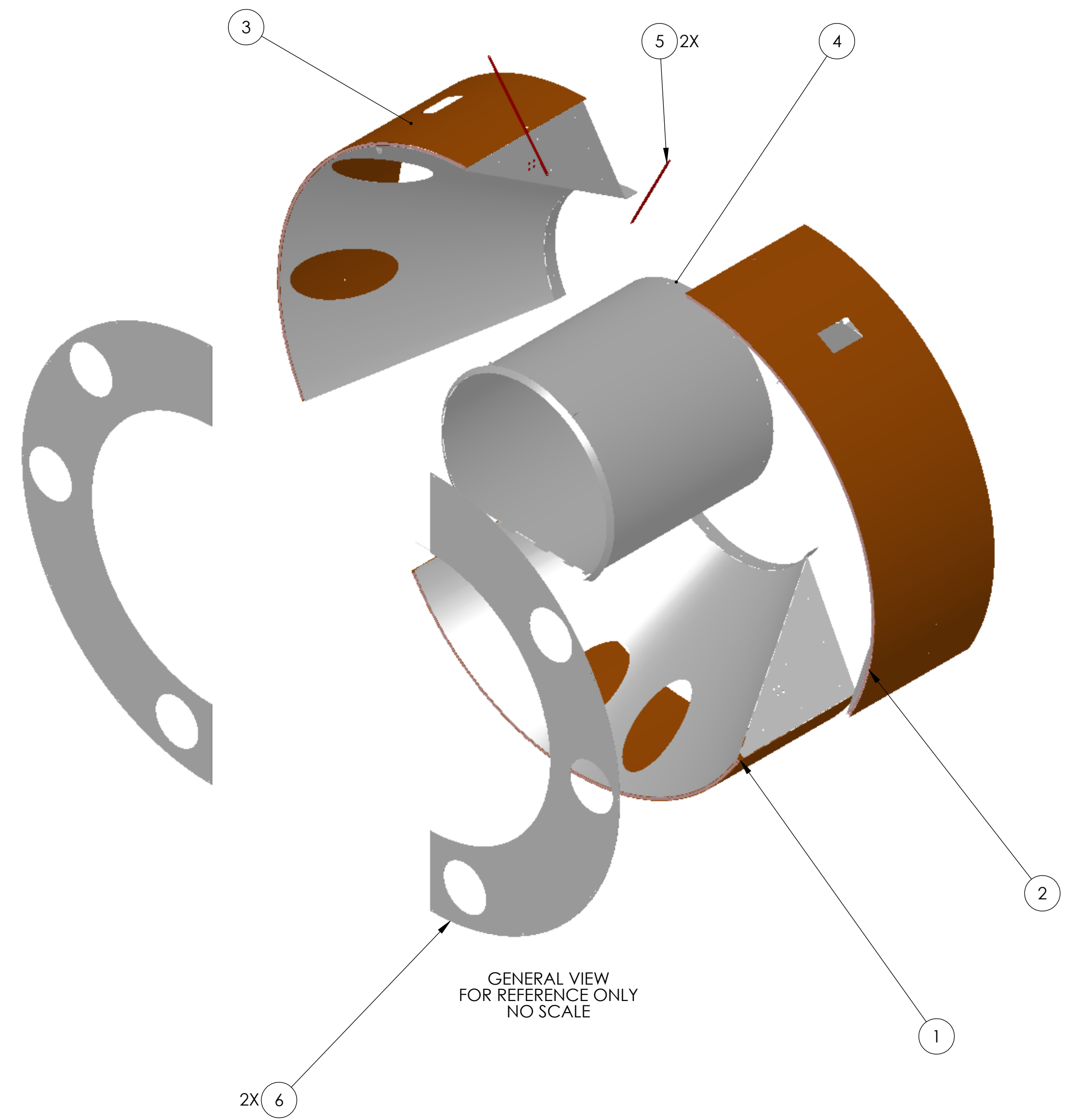
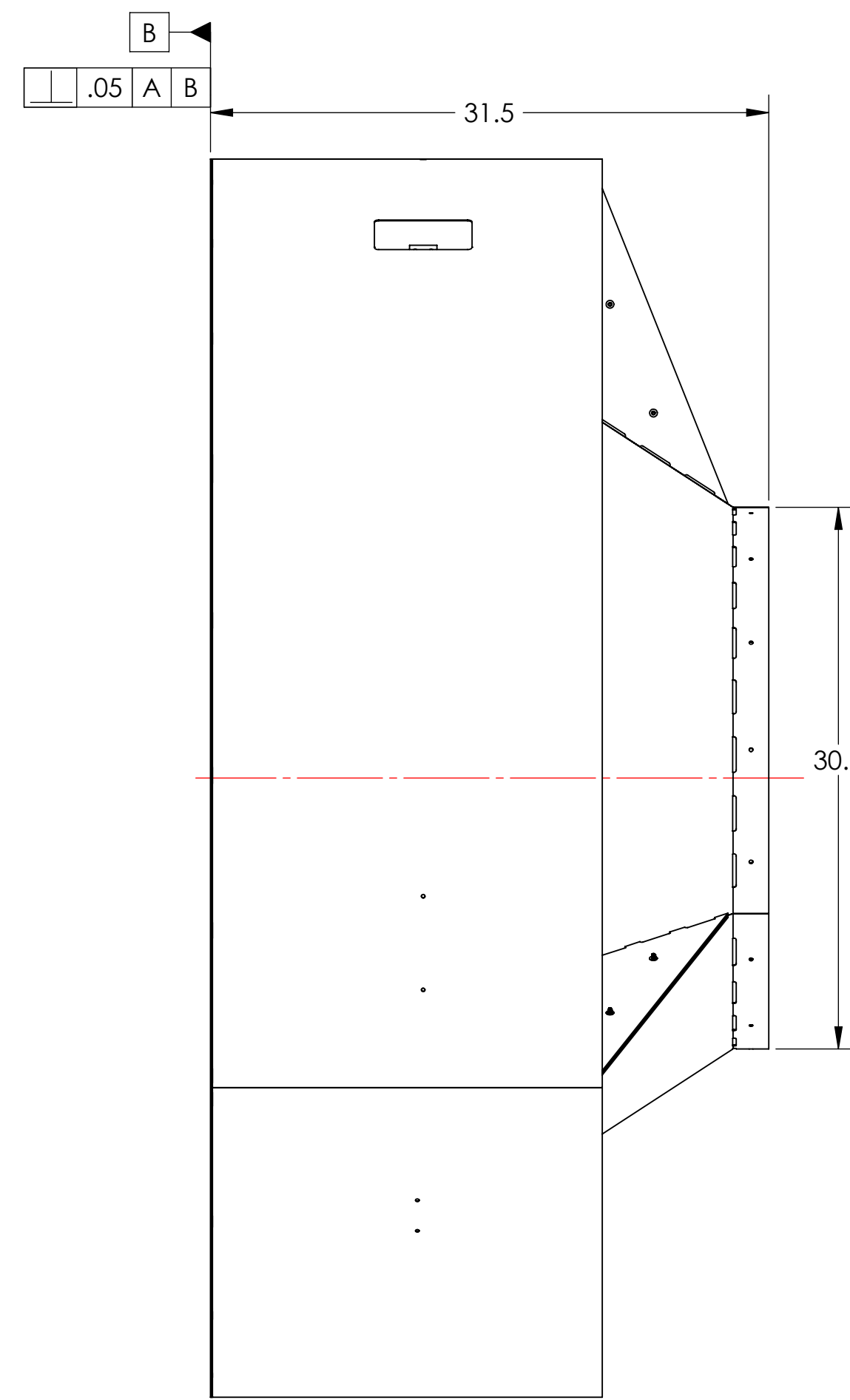
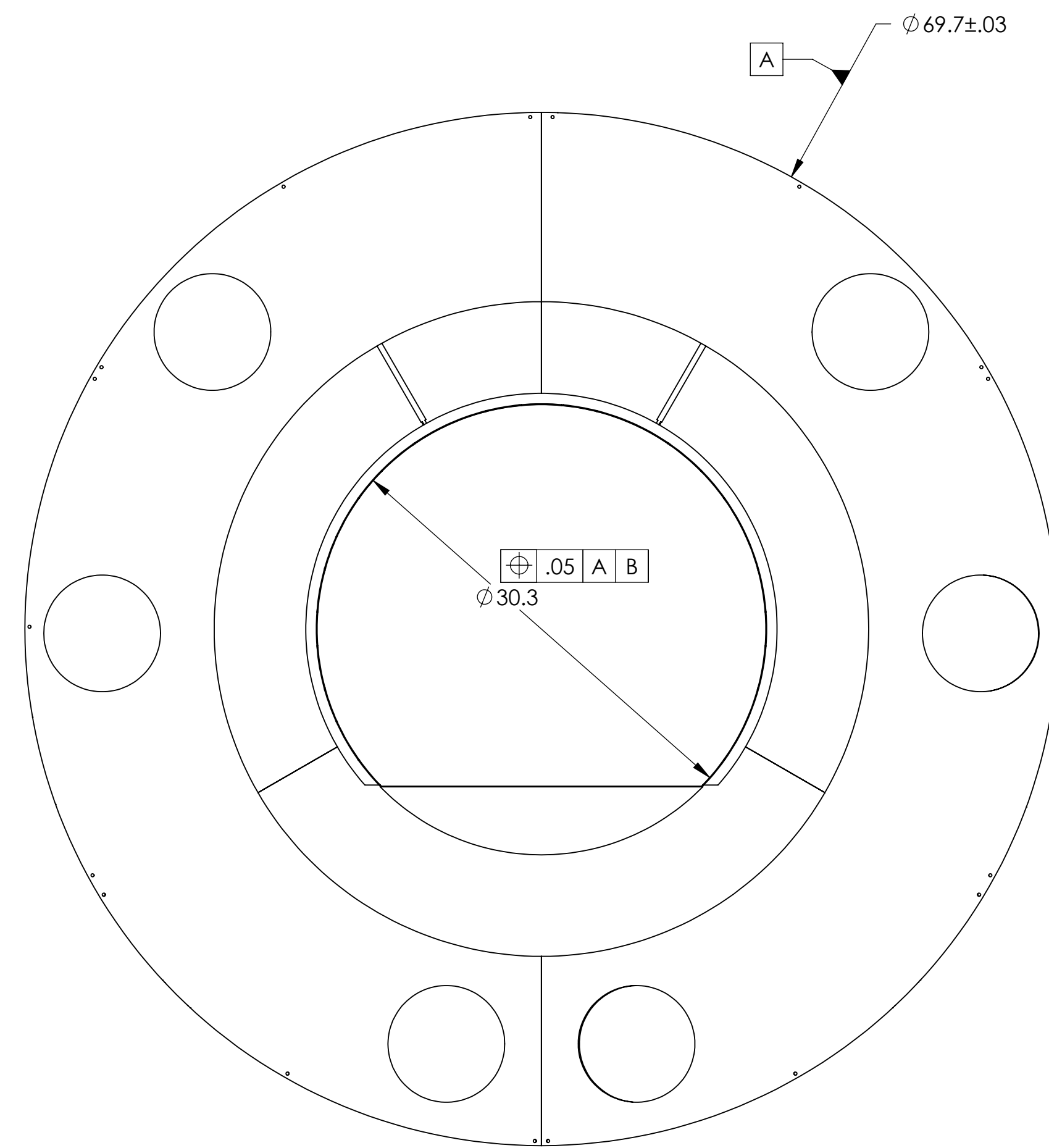
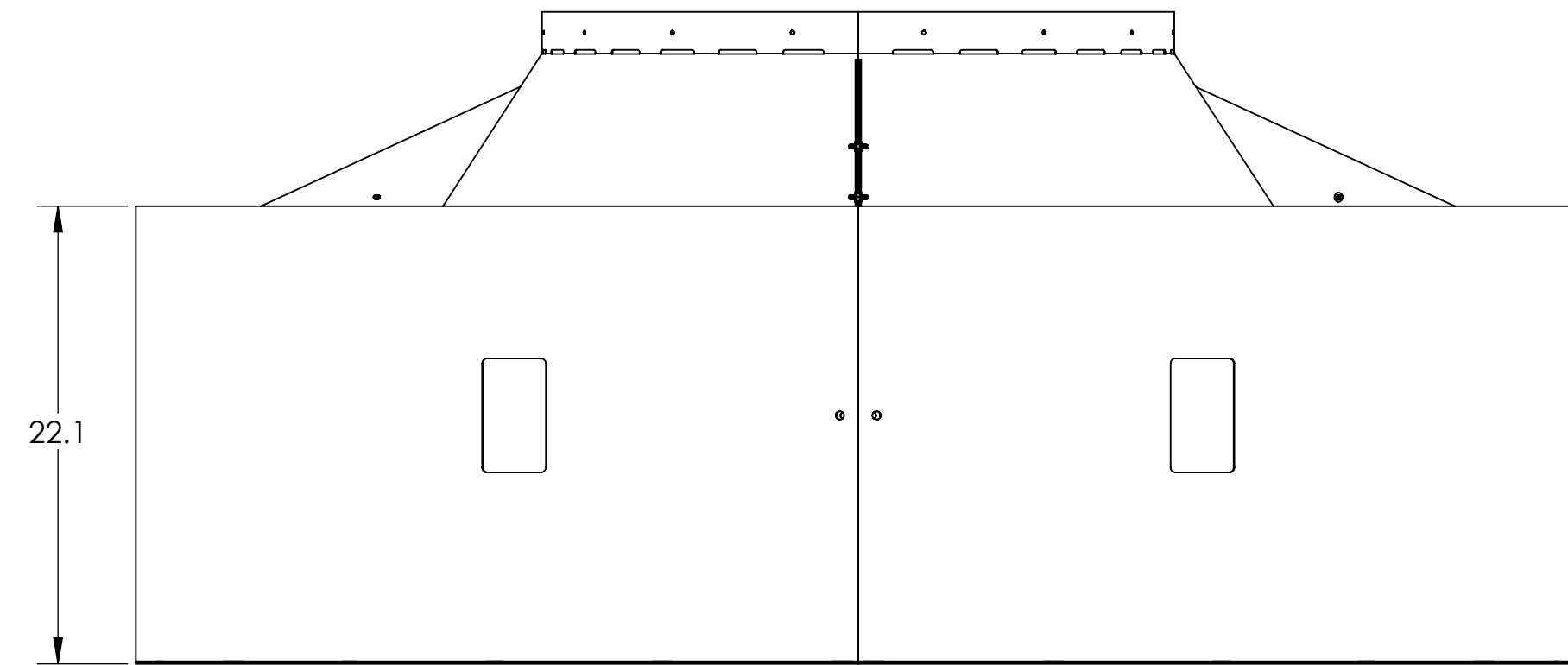


NOTES CONTINUED:  
5. ASSEMBLY TO BE PERFORMED BY LIGO STAFF.

REV.	DATE	DCN #	DRAWING TREE #
V1	08 SEP 2010	E1000360	E1000359
-	-	-	-
-	-	-	-



ITEM NO.	PART NUMBER	DESCRIPTION	MATERIAL	REQ	SPARE	TOTAL
9		18-8 SS 10-32 Screw X .375 L, 10-32 Screw X .375 L, .25 Hex	300 SSSL	18		18
8		18-8 SS General Purpose Flat Washer No. 10 Screw Size, 7/16" OD, .02"-.04" Thick		18		18
6	D0902657	MANIFOLD-CRYO BAFFLE HALF FACE PLATE, ITMX H1-H2	18GA A424 TYPE I STEEL	2		2
5	D1000572	MANIFOLD-CRYO BAFFLE BRACE	304, 316 OR 302 SSSL	2		2
4	D1001348	MANIFOLD-CRYO BAFFLE CYLINDER-SCRAPER ASSEMBLY	N/A	1		1
3	D0902656	MANIFOLD-CRYO BAFFLE SEGMENT SUBASSEMBLY WELDMENT, ITMX H1-H2, LEFT	N/A	1		1
2	D0902654	MANIFOLD CRYO BAFFLE SEGMENT SUBASSEMBLY WELDMENT, ITMX H1-H2, RIGHT	N/A	1		1
1	D0902655	MANIFOLD-CRYO BAFFLE SEGMENT SUBASSEMBLY WELDMENT, ITMX H1-H2, BOTTOM	N/A	1		1

NOTES AND TOLERANCES: (UNLESS OTHERWISE SPECIFIED)	
DIMENSIONS ARE IN INCHES	
TOLERANCES: .X ± .1 .XX ± .06 .XXX ± .010	
ANGULAR ± 1.0°	
MATERIAL	N/A
FINISH	N/A μinch

LIGO CALIFORNIA INSTITUTE OF TECHNOLOGY MASSACHUSETTS INSTITUTE OF TECHNOLOGY		PART NAME	
SYSTEM	ADVANCED LIGO	WELDMENT ASSY	
SUB-SYSTEM	AOS	DESIGNER	H. KELMAN
NEXT ASSY	D0902617	DRAFTER	TQ. NGUYEN 18 AUG 2010
		CHECKER	M. SMITH
		APPROVAL	D. COYNE
SIZE	DWG. NO.	SCALE	PROJECTION
	D1002061	1:12	
REV.	v1	SHEET 1 OF 1	

D1002061\_dLIGO\_AOS\_Manifold-Cryo Baffle\_Rotated Segment Assy\_PART\_PDM\_REV-X-027\_DRAWING\_PDM\_REV-X-009