

A

B

C

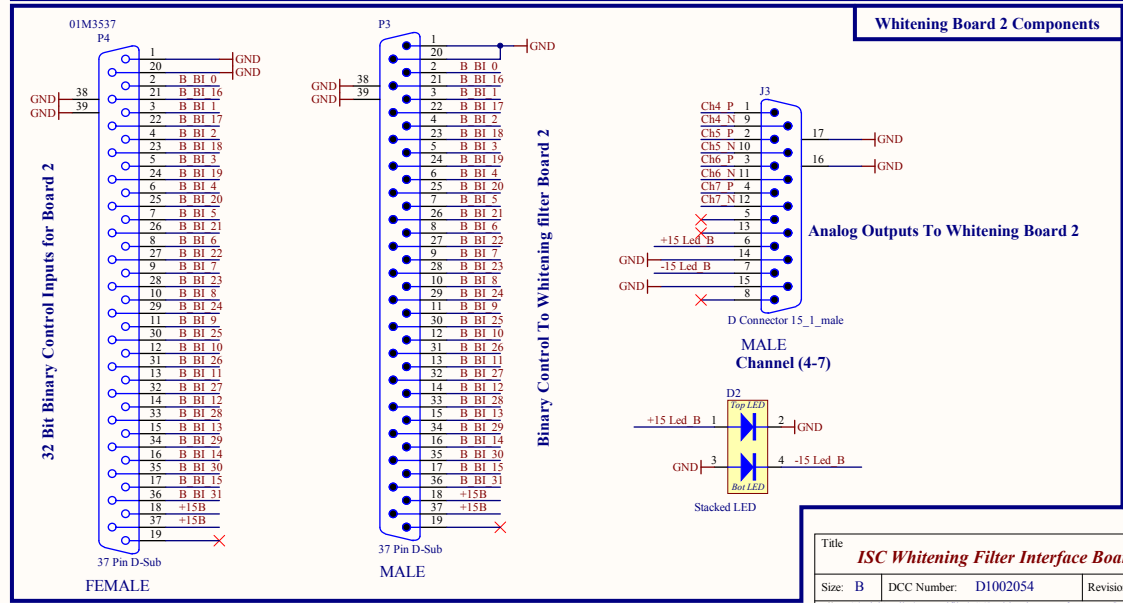
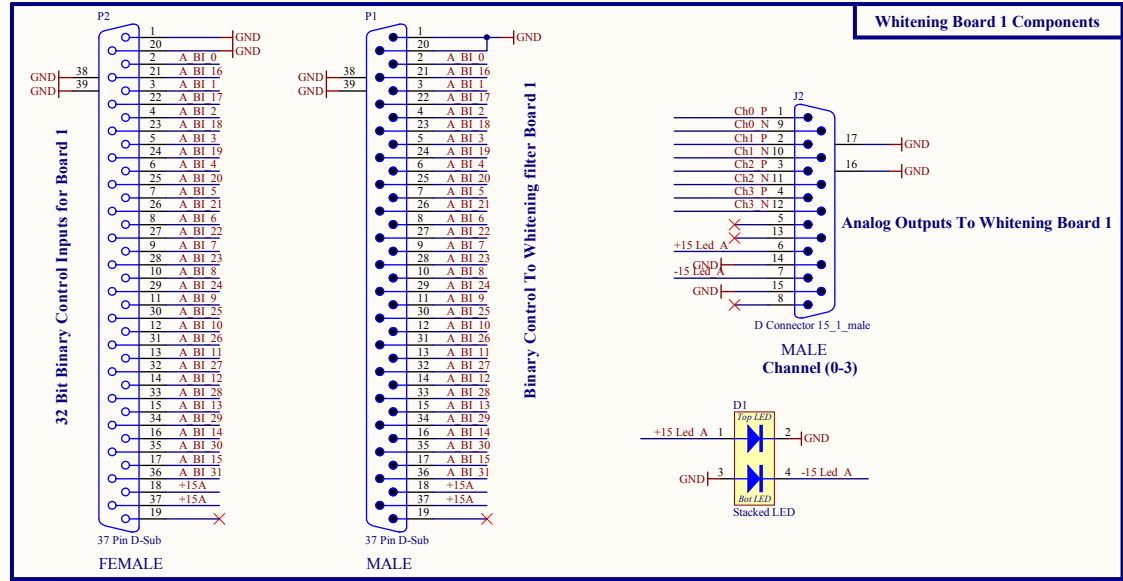
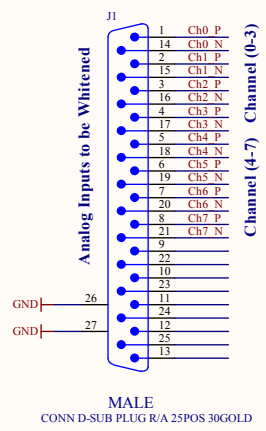
D

A

B

C

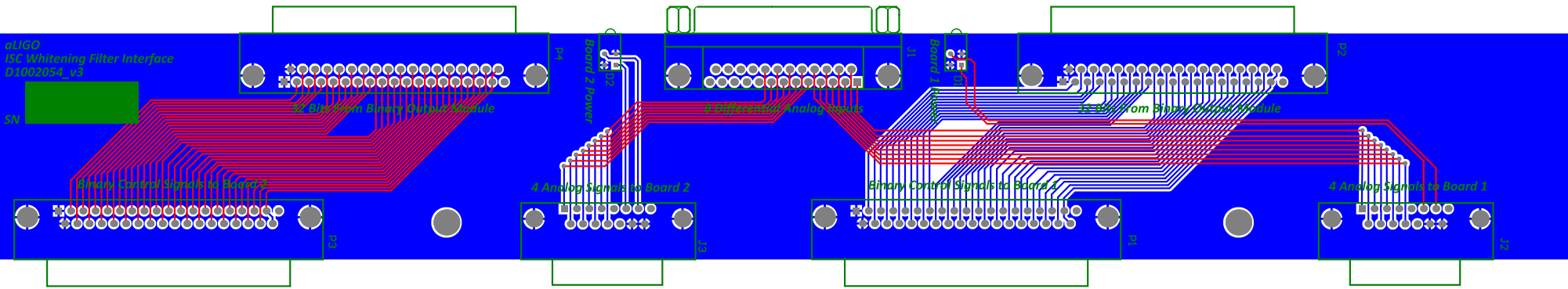
D



Title <b>ISC Whitening Filter Interface Board</b>				Last Edited: 7 January 2011	
LIGO Laboratory California Institute of Technology Massachusetts Institute of Technology				LIGO	
Size: B	DCC Number: D1002054	Revision: v3	Engineer: R. Abbott	Date: 1/7/2011	Time: 6:03:43 PM
File: C:\Rich's Files\Myacdfiles\ISC\Whitening Interface Board\ISC Whitening Interface D1002054.SchDoc				Sheet 1 of 1	

al180  
15C Whitening Filter Interface  
01002052\_v3

SW



12 Bits from Binary Output Module

4 Analog Signals to Board 2

6 Differential Analog Output

Binary Control Signals to Board 2

12 Bits from Binary Output Module

4 Analog Signals to Board 1

Board 2 Power

Board 1 Power

# Bill of Materials

Bill of Materials For Project [ISC Whitening Interface\_v3.PrjPCB] (No PCB Document Selected)

Source Data From: ISC Whitening Interface\_v3.PrjPCB  
 Project: ISC Whitening Interface\_v3.PrjPCB  
 Variant: None

Creation Date: 1/7/2011 6:03:48 PM  
 Print Date: 07-Jan-11 6:03:51 PM  
 Production Quantity: 1  
 Currency: <none>

Footprint	#Column Name E	#Column Name E	Designator	Description	Quantity	#Column Nam	Supplier Part Number 1	#Column Name Error:3	#Column Name Error:3	#Column Name Error:3	#Column Name Error:3	#Column Name Error:3	Manufacturer Part Num
my LUMEX Dual LED 788782-1			D1, D2	Dual Green LED	2		67-1321-ND						
MY_DB15M_RA			J1	CONN D-SUB PLUG R/A 25POS 30GOLD	1		A32074-ND						
DB37/M/RA/125MT			J2, J3	plug Assembly, 15 Position, Right Angle, Receptacle Assembly, 15 Position, Right Angle	2		6E17C-015P-AJ-121-ND						
DB37/F/RA/125MT			P1, P3	37 Pin D-Sub	2		01M3535						
			P2, P4	37 Pin D-Sub	2		01M3537						
					9					\$	-		

Approved	Notes