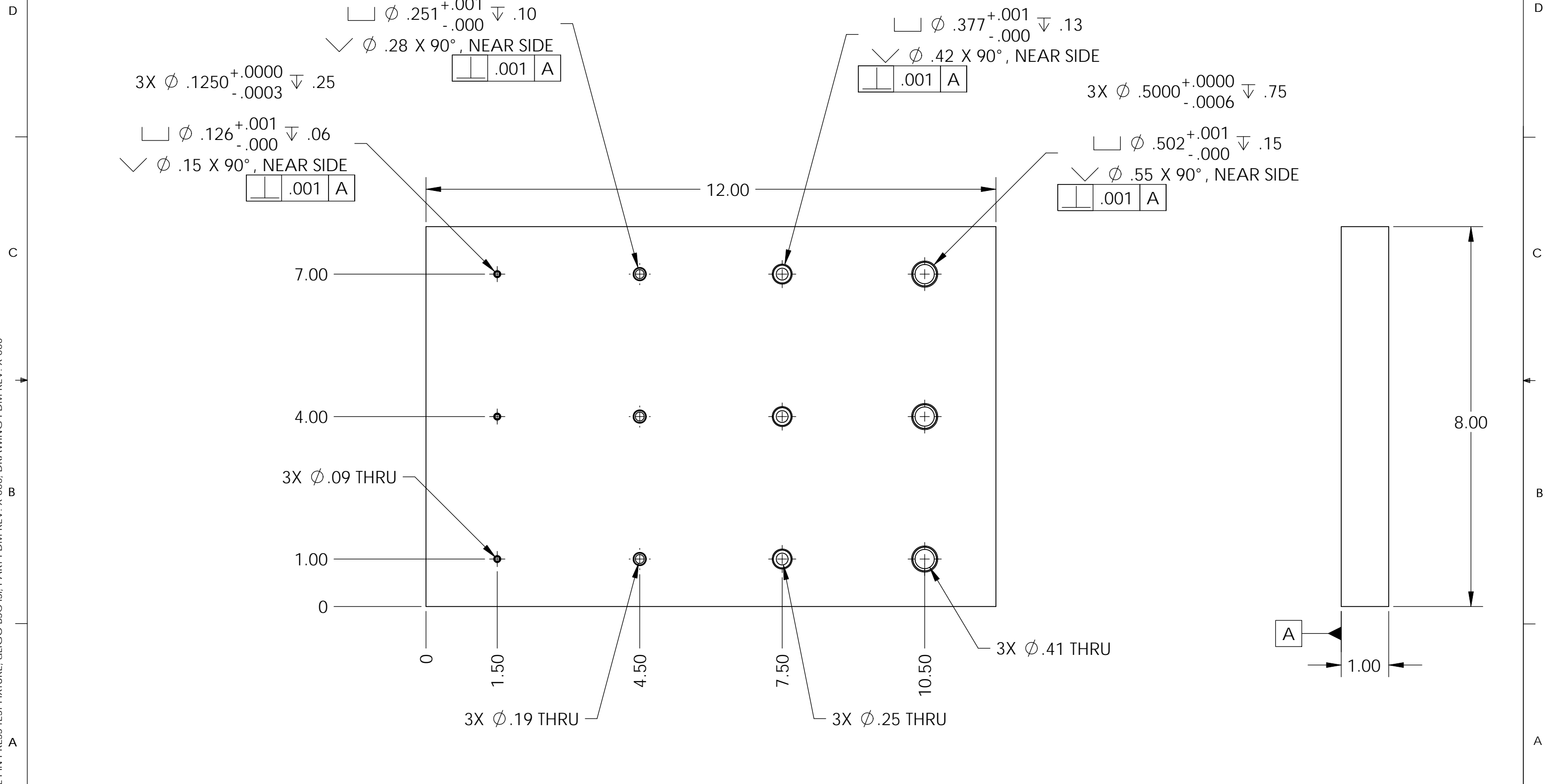


D11002036 DOWEL PIN PRESS TEST FIXTURE, aLIGO BSC ISI, PART PDM REV: X-000, DRAWING PDM REV: X-000

NOTES CONTINUED:
 5. SCRIBE, ENGRAVE, OR MECHANICALLY STAMP (NO INKS OR DYES) DRAWING PART NUMBER, REVISION (AND VARIANT OR "TYPE" IF APPLICABLE ON NOTED SURFACE OF PART FOLLOWED ON THE NEXT LINE WITH A THREE DIGIT SERIAL NUMBER. SERIAL NUMBERS START AT 001 FOR THE FIRST ARTICLE AND PROCEED CONSECUTIVELY. USE MINIMUM 0.12 HIGH CHARACTERS, UNLESS THE SIZE OF THE PART DICTATES SMALLER CHARACTERS. A VIBRATORY TOOL MAY BE USED.
 EXAMPLE DXXXXXXX-VY, TYPE-XX, S/N XXX.
 6. APPROXIMATE WEIGHT = 4.204 LB.

REV.	DATE	DCN #	DRAWING TREE #
v1	05 Aug 2010	E1000293	-



NOTES AND TOLERANCES: (UNLESS OTHERWISE SPECIFIED)				LIGO CALIFORNIA INSTITUTE OF TECHNOLOGY MASSACHUSETTS INSTITUTE OF TECHNOLOGY		PART NAME					
DIMENSIONS ARE IN INCHES				SYSTEM		DOWEL PIN TEST FIXTURE, aLIGO BSC ISI					
TOLERANCES: .XX ± .015 .XXX ± .005				SUB-SYSTEM		DESIGNER	M.HILLARD	05 Aug 2010	SIZE	DWG. NO.	REV.
ANGULAR ± .5°				NEXT ASSY		DRAFTER	M.HILLARD	05 Aug 2010	B	D1002036	v1
MATERIAL 6061-T6 Al				FINISH 32 μinch		CHECKER	F.MATICHARD	05 Aug 2010	SCALE: 1:2	PROJECTION:	SHEET 1 OF 1
1. INTERPRET DRAWING PER ASME Y14.5-1994.				N/A		APPROVAL	K.MASON	05 Aug 2010			
2. REMOVE ALL SHARP EDGES, R.02 MIN.											
3. DO NOT SCALE FROM DRAWING.											
4. ALL MACHINING FLUIDS MUST BE FULLY SYNTHETIC, FULLY WATER SOLUBLE AND FREE OF SULFUR, SILICONE, AND CHLORINE.											