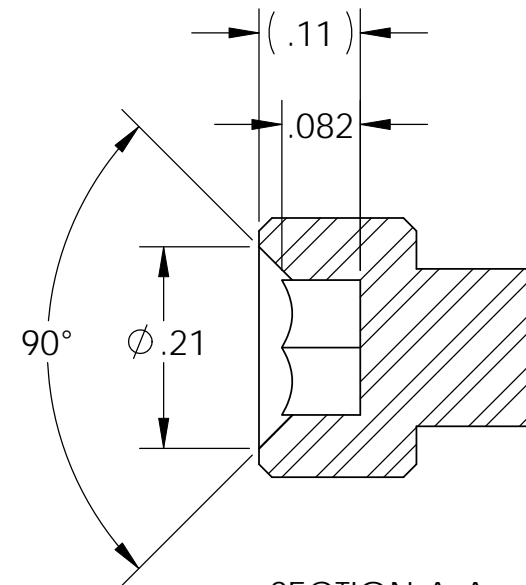
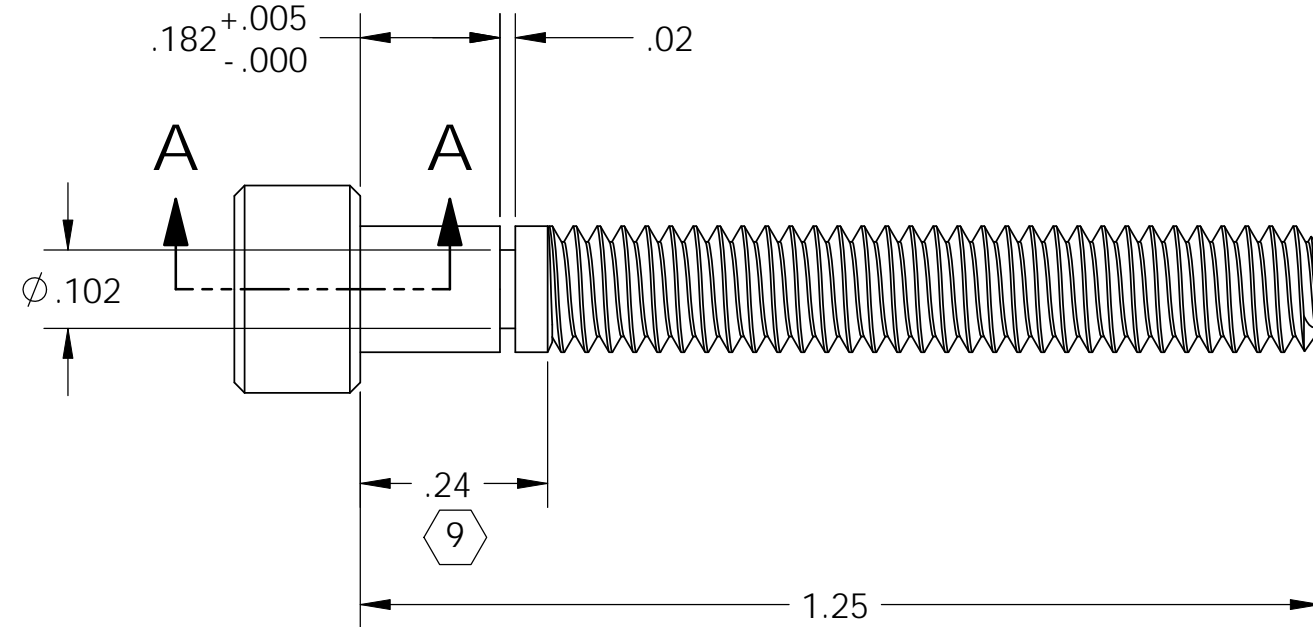
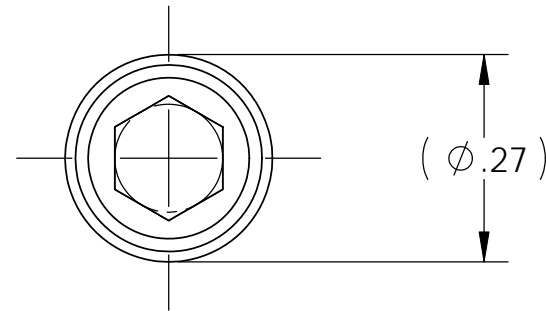
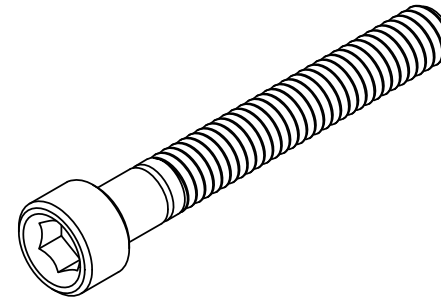


D1001987 aLIGO TMS VERT. - HOR. SCREW., PART PDM REV: X-008, DRAWING PDM REV: X-005

- NOTES CONTINUED:
- 5 BAG AND TAG PARTS WITH THEIR DRAWING PART NUMBER, REVISION, VARIANT OR "TYPE" (IF APPLICABLE), AND QUANTITY. IF PARTS ARE TOO SMALL TO SCRIBE, BAGGING AND TAGGING ALONE IS SUFFICIENT. EXAMPLE (TAG): DXXXXXX-VY, TYPE-XX, QTY: TBD
  - 6 APPROXIMATE WEIGHT = .01 LB [4G].
  - 7 MAKE FROM: MCMASTER CARR# 92196A201, #8-32 X 1.25 SHCS, 18-8 SS OR EQUIVALENT.
  - 8 ELECTROPOLISH PER LIGO SPECIFICATION E0900364, SECTION 5.2.2.
  - 9 CHASE FULL THREAD TO DIMENSION SHOWN.

REV.	DATE	DCN #	DRAWING TREE #
v1	08/12/2010	E1000318	-
v2	10/29/2010	E1000602	-
v3	02 AUG 2011	E1100351	-



SECTION A-A  
COUNTERSINK DETAIL  
NO SCALE

NOTES AND TOLERANCES: (UNLESS OTHERWISE SPECIFIED)				LIGO CALIFORNIA INSTITUTE OF TECHNOLOGY MASSACHUSETTS INSTITUTE OF TECHNOLOGY		PART NAME			
DIMENSIONS ARE IN INCHES		1. INTERPRET DRAWING PER ASME Y14.5-1994. 2. REMOVE ALL SHARP EDGES, R.02 MIN. 3. DO NOT SCALE FROM DRAWING. 4. ALL MACHINING FLUIDS MUST BE FULLY SYNTHETIC, FULLY WATER SOLUBLE AND FREE OF SULFUR, SILICONE, AND CHLORINE.		SYSTEM LIGO		SUB-SYSTEM AOS		aLIGO TMS VERT. - HORZ. SCREW	
TOLERANCES: .XX ± .01 .XXX ± .005		MATERIAL 7		FINISH 8		DESIGNER K. MAILAND 07/21/2010		SIZE DWG. NO. B D1001987	
ANGULAR ± 1.0°		NEXT ASSY D1001600		CHECKER		DRAFTER M. MILLER 08/03/2010		REV. v3	
				APPROVAL		SCALE: 2:1		PROJECTION:  SHEET 1 OF 1	