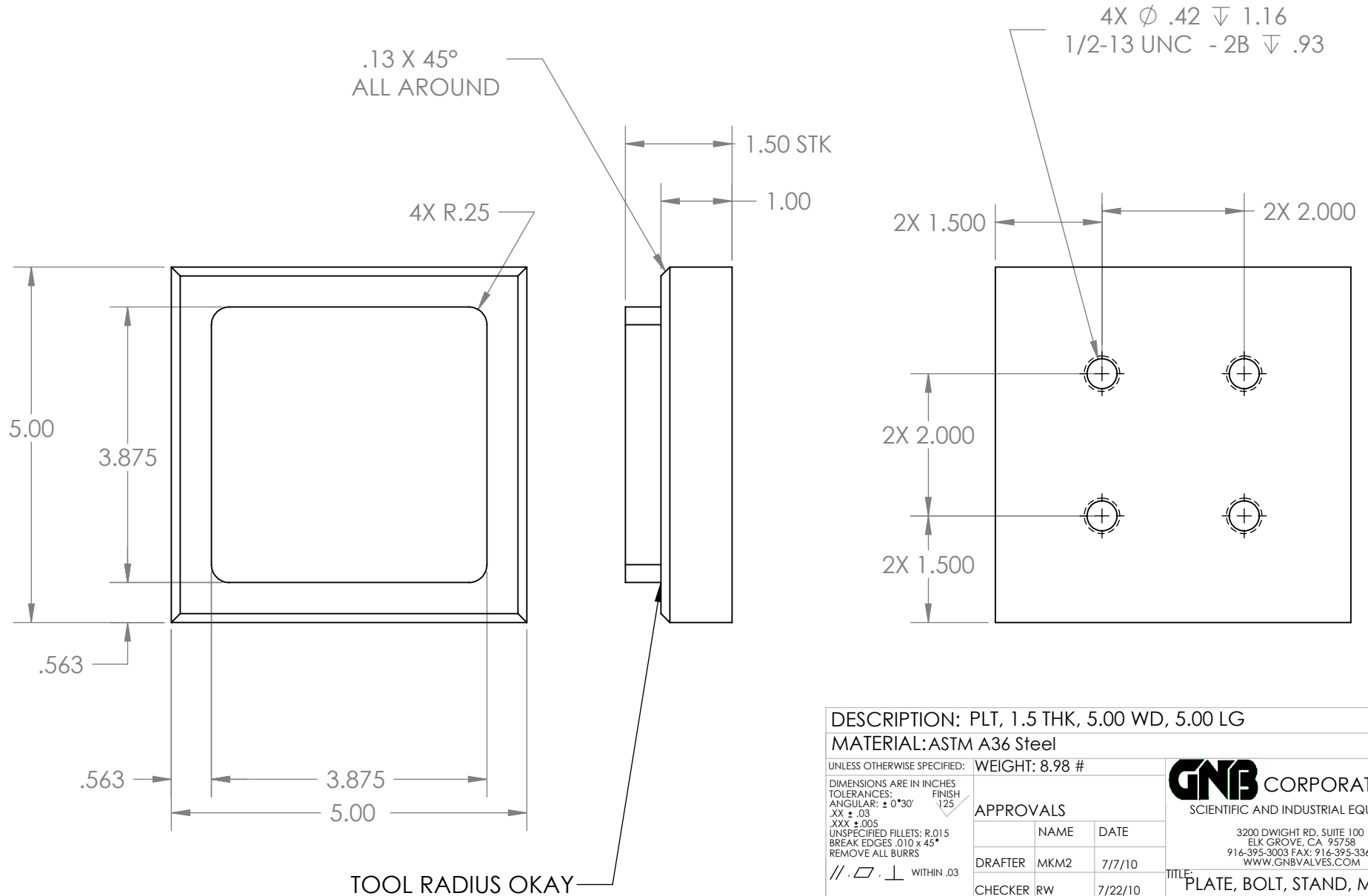


PROPRIETARY AND CONFIDENTIAL
 THE INFORMATION CONTAINED IN THIS
 DRAWING IS THE SOLE PROPERTY OF
 GNB CORPORATION. ANY
 REPRODUCTION IN PART OR AS A WHOLE
 WITHOUT THE WRITTEN PERMISSION OF
 GNB CORPORATION IS PROHIBITED.

REVISIONS				
ZONE	REV.	DESCRIPTION	DATE	APPROVED
	A	RELEASED TO PRODUCTION	8/24/2010	MKM2



DESCRIPTION: PLT, 1.5 THK, 5.00 WD, 5.00 LG
 MATERIAL: ASTM A36 Steel

UNLESS OTHERWISE SPECIFIED: WEIGHT: 8.98 #

DIMENSIONS ARE IN INCHES
 TOLERANCES: FINISH
 ANGULAR: ± 0°30' 125
 .XX ± .03
 .XXX ± .005
 UNSPECIFIED FILLETS: R.015
 BREAK EDGES .010 x 45°
 REMOVE ALL BURRS

APPROVALS

	NAME	DATE
DRAFTER	MKM2	7/7/10
CHECKER	RW	7/22/10
ENGINEER	MKM2	7/7/10

THIRD ANGLE PROJECTION

DO NOT SCALE DRAWING

GNB CORPORATION
 SCIENTIFIC AND INDUSTRIAL EQUIPMENT
 3200 DWIGHT RD. SUITE 100
 ELK GROVE, CA 95758
 916-395-3003 FAX: 916-395-3363
 WWW.GNBVALVES.COM

TITLE: PLATE, BOLT, STAND, MC TUBES

DWG. NO. **A** 114244-00M
 SCALE: 1:2 SHEET 1 OF 1

REV
A

5

4

3

2

1