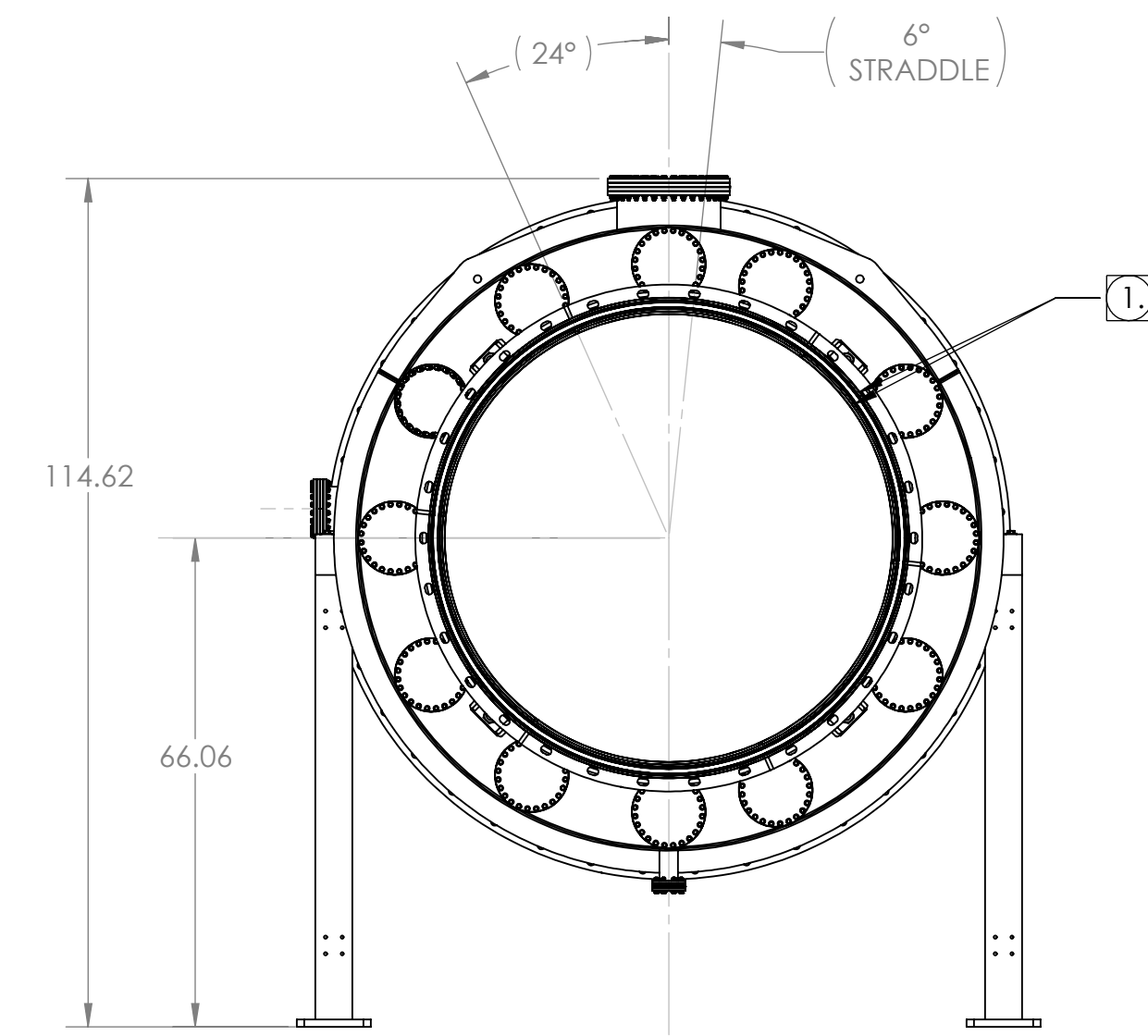
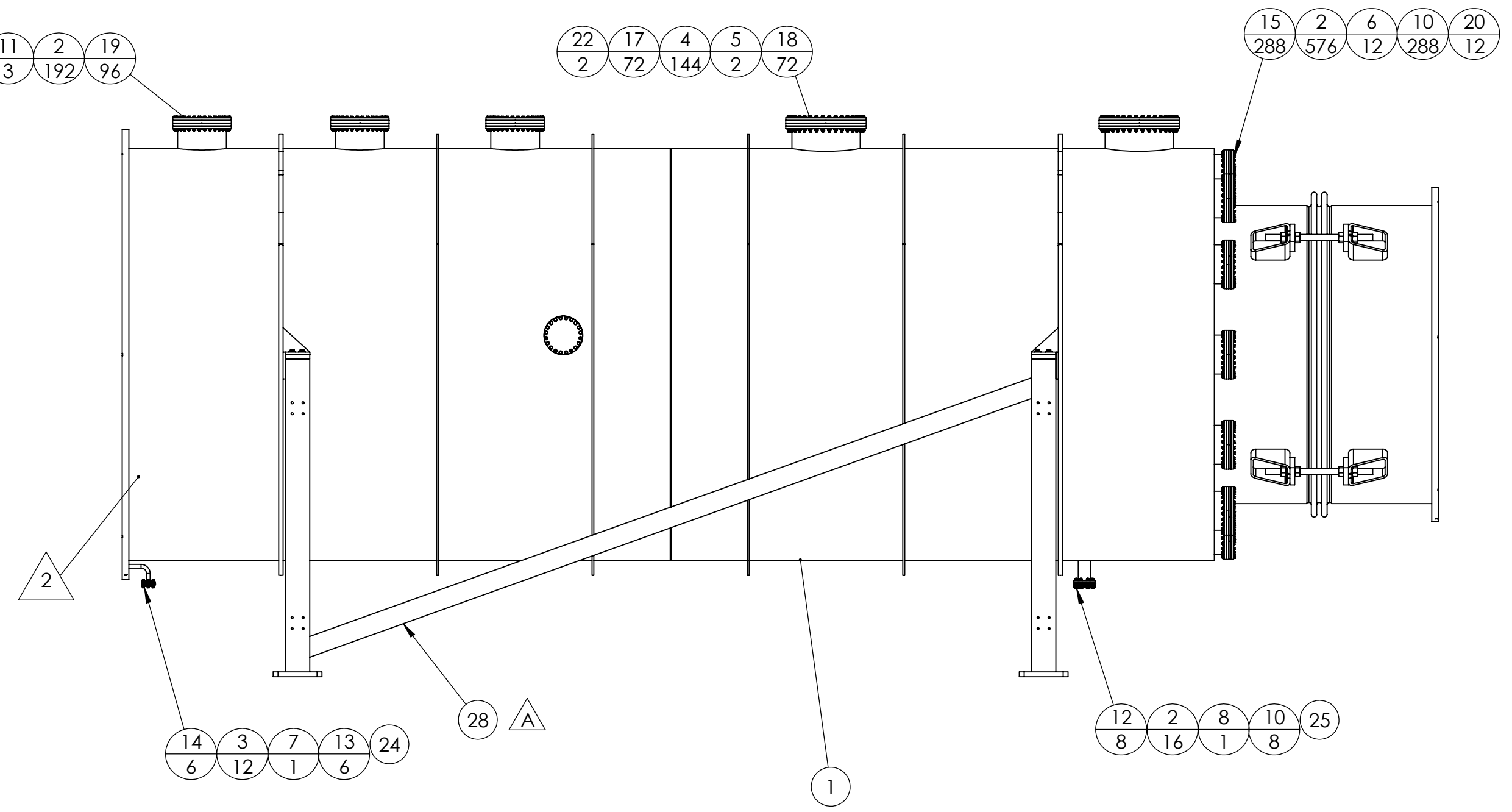
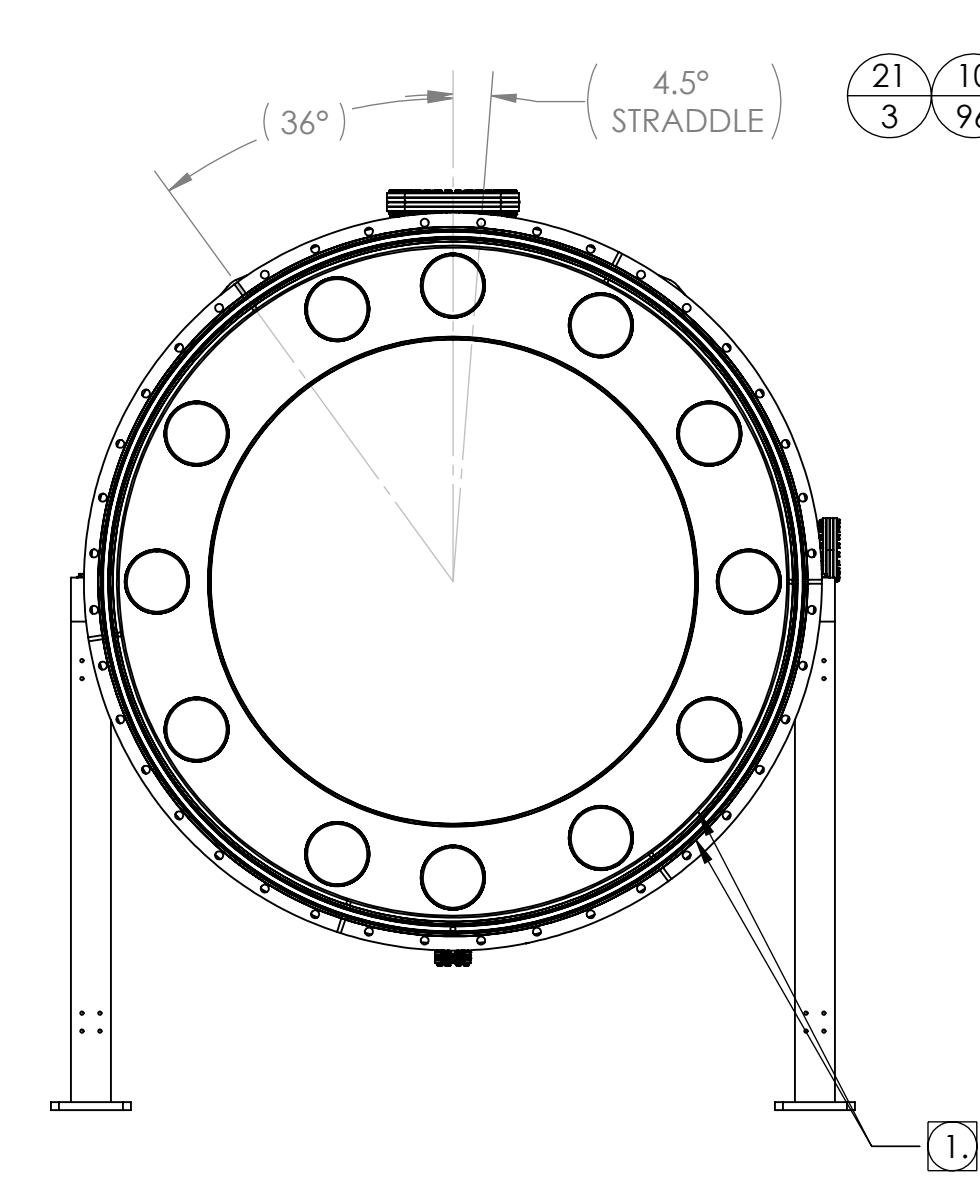
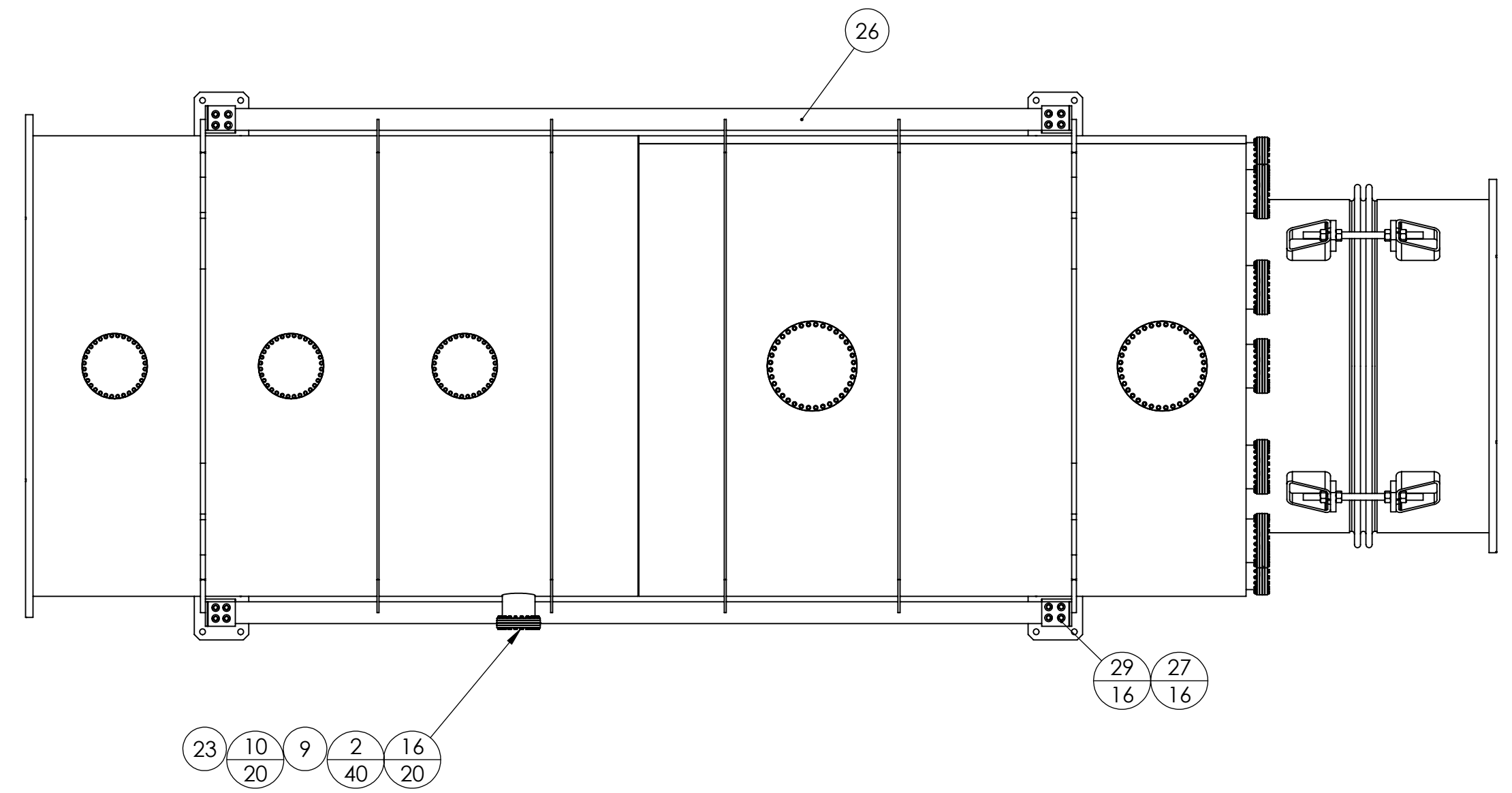


PROPRIETARY AND CONFIDENTIAL
 THIS DRAWING IS THE PROPERTY OF
 GNB CORPORATION. ANY REPRODUCTION
 OR TRANSMISSION OF THIS DRAWING
 WITHOUT THE WRITTEN PERMISSION OF
 GNB CORPORATION IS PROHIBITED.

REVISIONS				
ZONE	REV.	DESCRIPTION	DATE	APPROVED
	A	REVISED STAND DESIGN, BOM	7/29/2010	MKM2
	B	REVISED HARDWARE, RELEASED TO PRODUCTION	8/24/2010	MKM2



ITEM NO.	PART NUMBER	DESCRIPTION	QTY.
1	114200-01WS	FINAL WELDMENT, MCB TUBE	1
2	F050000Z	WASHER, 5/16 NOM ID, 0.065 THK, Zn COATED	824
3	F040000Z	WASHER, 1/4 NOM ID, 0.065 THK, Zn COATED	12
4	F060000Z	WASHER, 3/8 NOM ID, 0.065 THK, Zn COATED	144
5	1650-000N	(NORCAL) BLANK, CF, 16.50 OD	2
6	1000-000N	(NORCAL) BLANK, CF, 10" OD	12
7	275-000N	(NORCAL) BLANK, CF, 2.75" OD	1
8	450-000N	(NORCAL) BLANK, CF, 4.50" OD	1
9	800-000N	(NORCAL) BLANK, CF, 8" OD	1
10	G05F0000Z	HEX NUT, 5/16-24, Zn COATED	412
11	1200-000N	(NORCAL) BLANK, CF, 12" OD	3
12	C05F0300Z	HHCS, 5/16-24, 1.88 LG, Zn COATED	8
13	G04F0000Z	HEX NUT, 1/4-28, Zn COATED	6
14	C04F0240Z	HHCS, 1/4-28, 1.50 LG, Zn COATED	6
15	C05F0400Z	HHCS, 5/16-24, 2.50 LG, Zn COATED	288
16	C05F0360Z	HHCS, 5/16-24, 2.25 LG, Zn COATED	20
17	G06F0000Z	HEX NUT, 3/8-24, Zn COATED	72
18	C06F0480Z	HHCS, 3/8-24, 3.00 LG, Zn COATED	72
19	C05F0440Z	HHCS, 5/16-24, 2.75 LG, Zn COATED	96
20	G-1000	(NORCAL) GASKET, COPPER, 10" CF	12
21	G-1200	(NORCAL) GASKET, COPPER, 12" CF	3
22	G-1650	(NORCAL) GASKET, COPPER, 16.50" CF	2
23	G-800	(NORCAL) GASKET, COPPER, 8" CF	1
24	G-275	(NORCAL) GASKET, COPPER, 2.75" CF	1
25	G-450	(NORCAL) GASKET, COPPER, 4.5" CF	1
26	114237-00WM	WELDMENT, MCB TUBE STAND	1
27	C08C0320Z	HHCS, 1/2-13, 2.00 LG, Zn COATED	16
28	114237-01WM	WELDMENT, MCB TUBE STAND	1
29	91525A145	(McM) WASHER, FENDER, 1/2 NOM ID, 1.5" OD	16

NOTES:

1. VACUUM SEALING SURFACE
2. SCRIBE THE FOLLOWING ON THE INDICATED SURFACE:
 - a. LIGO PART NUMBER,
 - b. SERIAL NUMBER,
 - c. GNB PART NUMBER
2. CLEAN PER LIGO SPECIFICATION E0900403
3. BAKEOUT PER LIGO SPECIFICATION E0900407
4. LEAK CHECK PER LIGO SPECIFICATION E0900404
5. KEEP FREE OF CONTAMINATION. ANY CONTAMINATION MUST BE REMOVED WITH A CO2 SPRAY IMMEDIATELY.
6. VERIFY CLEANLINESS PER PROCEDURE QP1750-A3
7. AFTER CLEANING, LEAVE ALL CF BLANKS IN PLACE, SHIPPING COVERS OVER MAIN FLANGES, AND BELLOWS TIE RODS IN PLACE AT ALL TIMES, UNLESS OTHERWISE NECESSARY.
8. ALL CONFLAT FLANGES ARE NON-ROTATABLE WITH THRU HOLES.

TORQUE TABLE		
ITEM	TORQUE VALUE	UNITS
14	110	IN-LB
12, 15, 16, 19	190	IN-LB
18, 27	345	IN-LB

MATERIAL: AISI 304/AISI 304L DUAL CERT PER SA240
 UNLESS OTHERWISE SPECIFIED: WEIGHT: 8986.80 #
 DIMENSIONS ARE IN INCHES: FINISH: 125-
 TOLERANCES: ANGULAR: ±10°/30°
 XXX ±.005
 UNFINISHED RADII: R.015
 BREAK EDGES: .010x45°
 REMOVE ALL BURRS
 // 0.1 WITHIN .03

APPROVALS: DATE: 6/9/10
 DRAFTER: MKM2
 CHECKER: RW 6/15/10
 ENGINEER: MKM2 6/9/10

GNB CORPORATION
 SCIENTIFIC AND INDUSTRIAL EQUIPMENT
 3200 DWIGHT RD. SUITE #100
 ELK GROVE, CA 95758
 916-395-3003 FAX: 916-395-3363
 www.gnbolives.com

ASSEMBLY, TUBE, MCB2
 WAMCB#2, LAMCB#2

DO NOT SCALE DRAWING
 DWG. NO. 114199-01S
 SCALE: 1:24 SHEET 1 OF 1

REV B