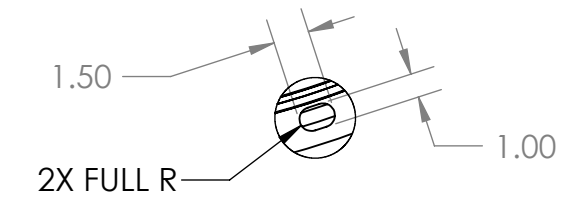
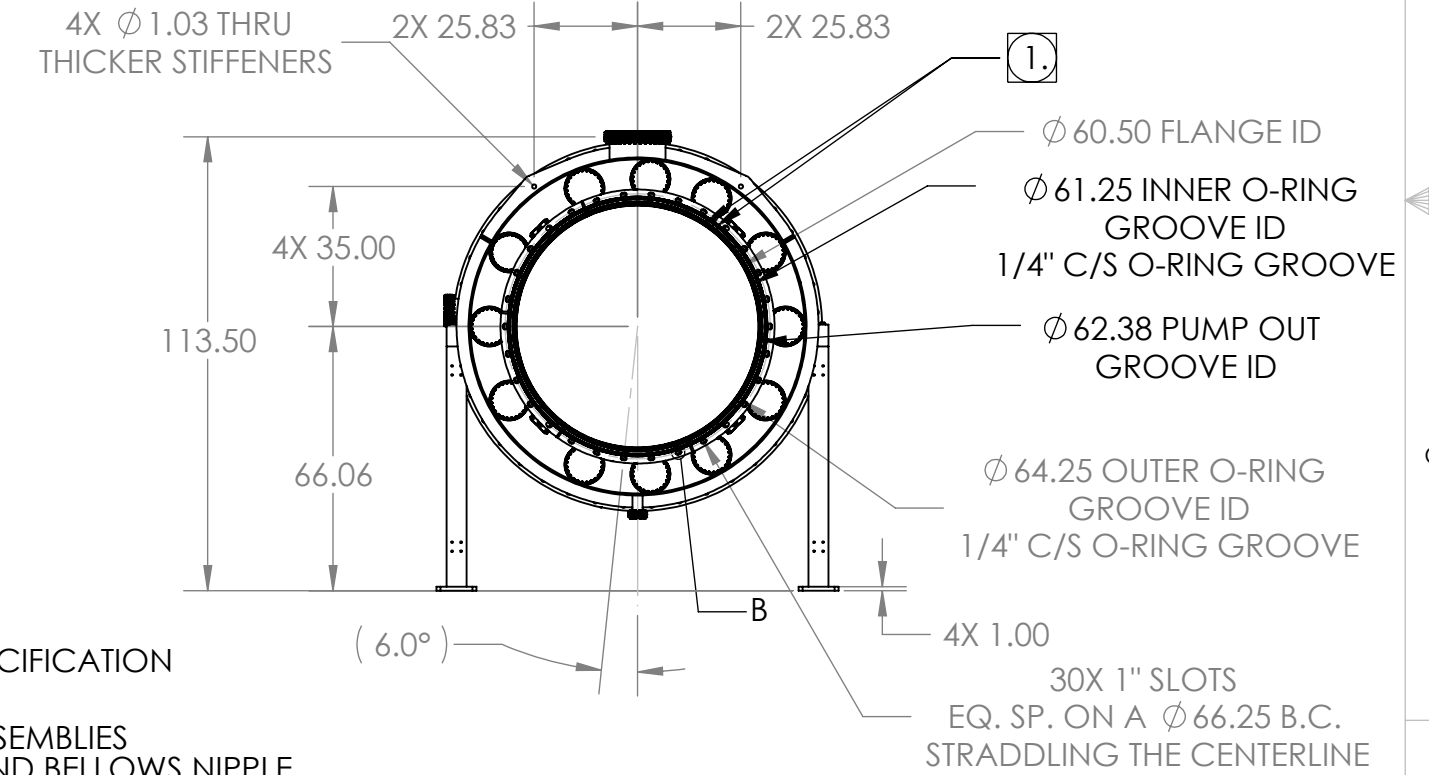
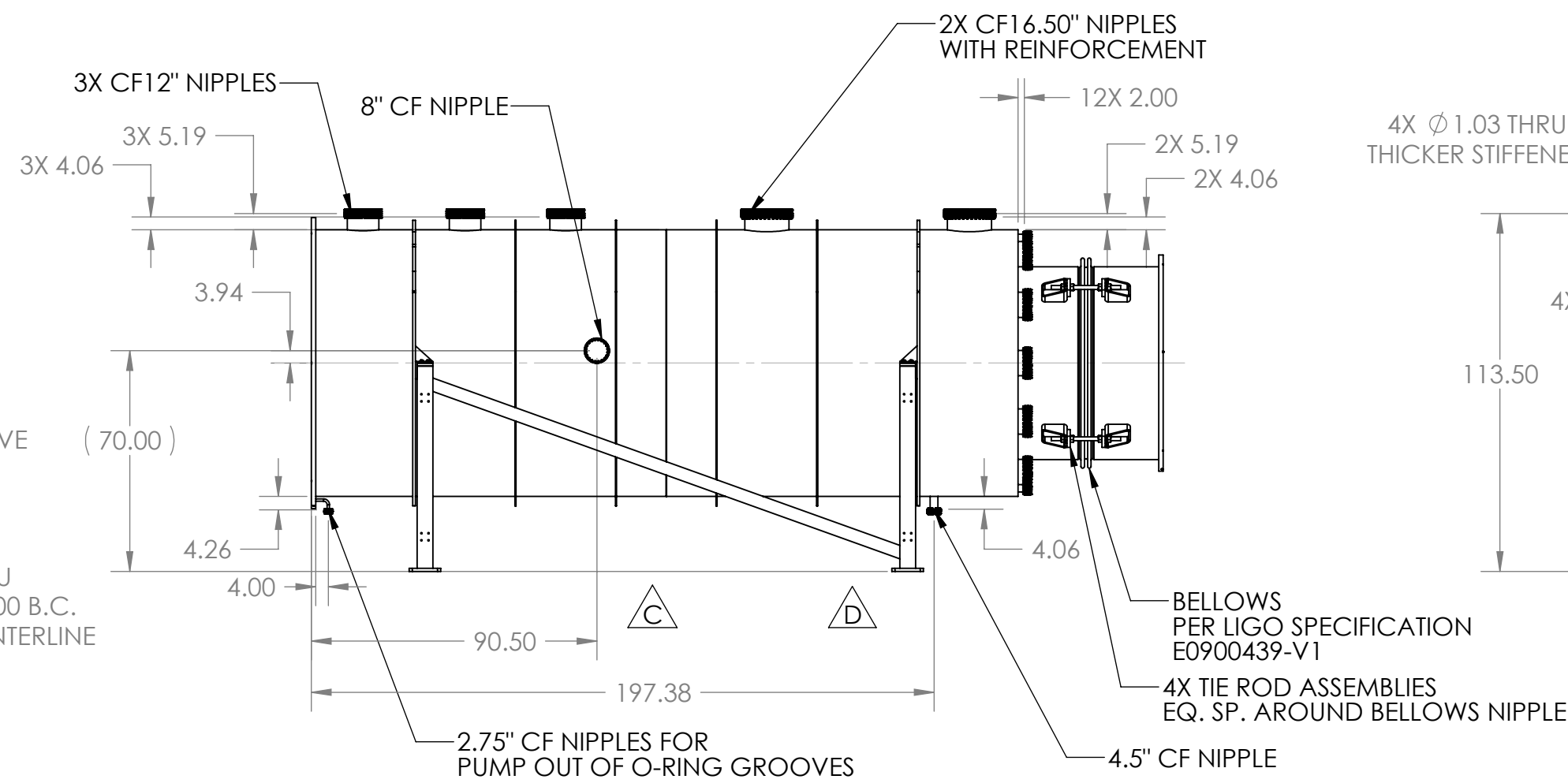
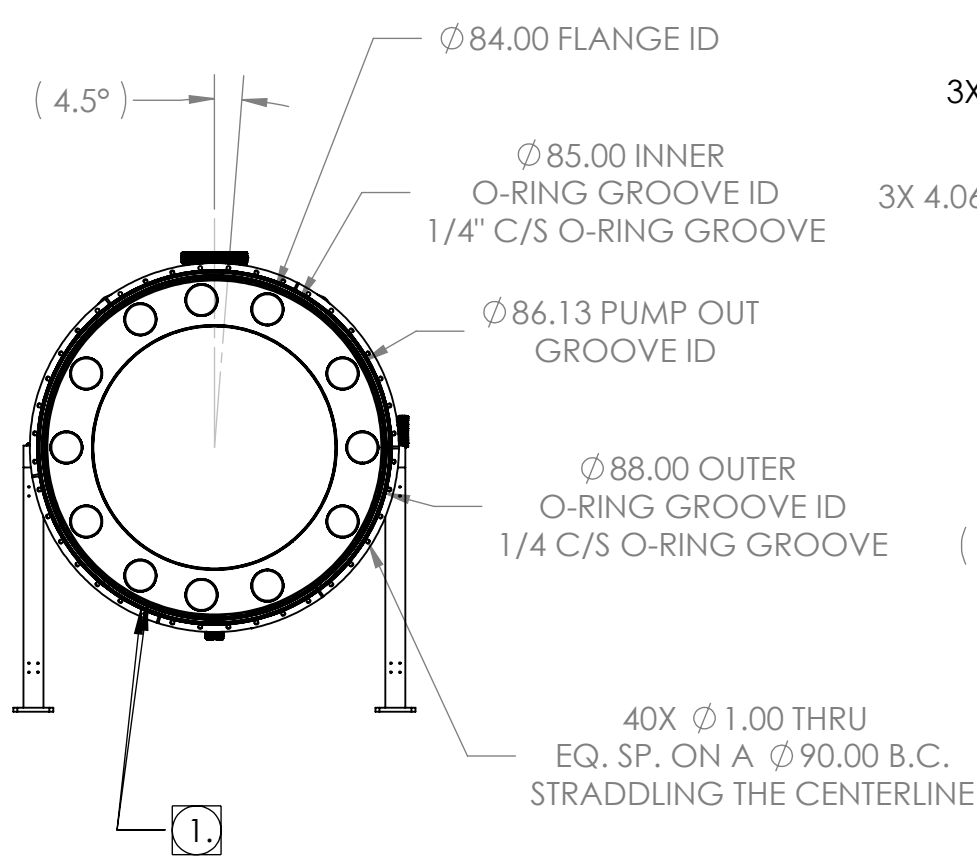
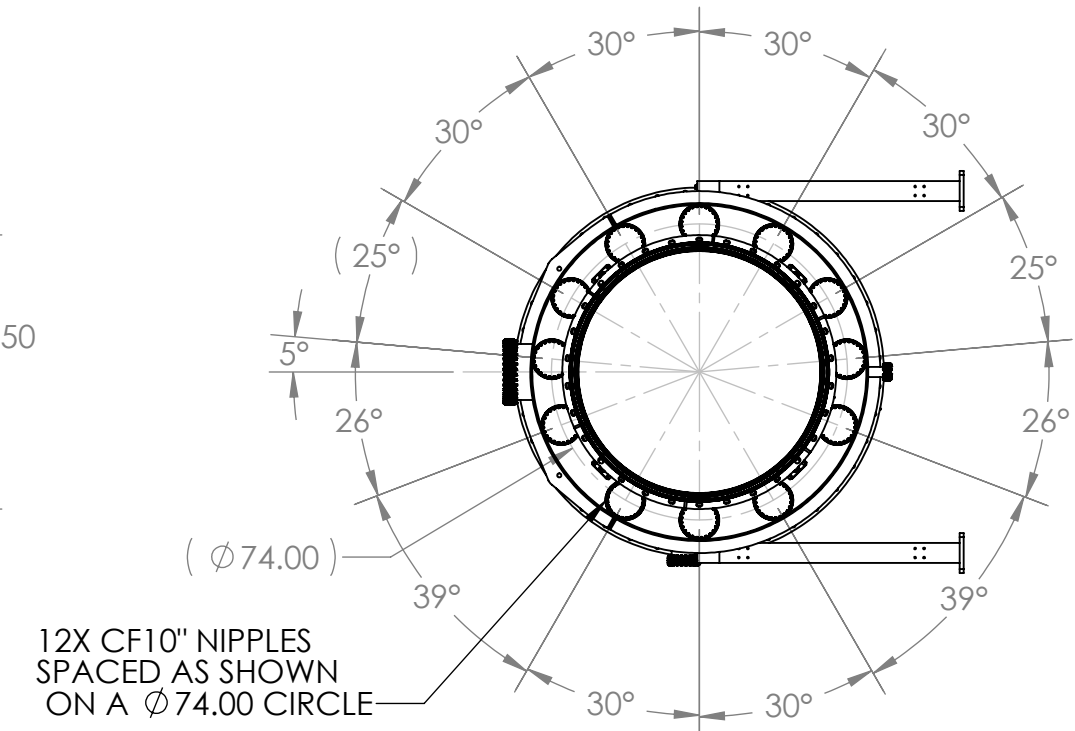
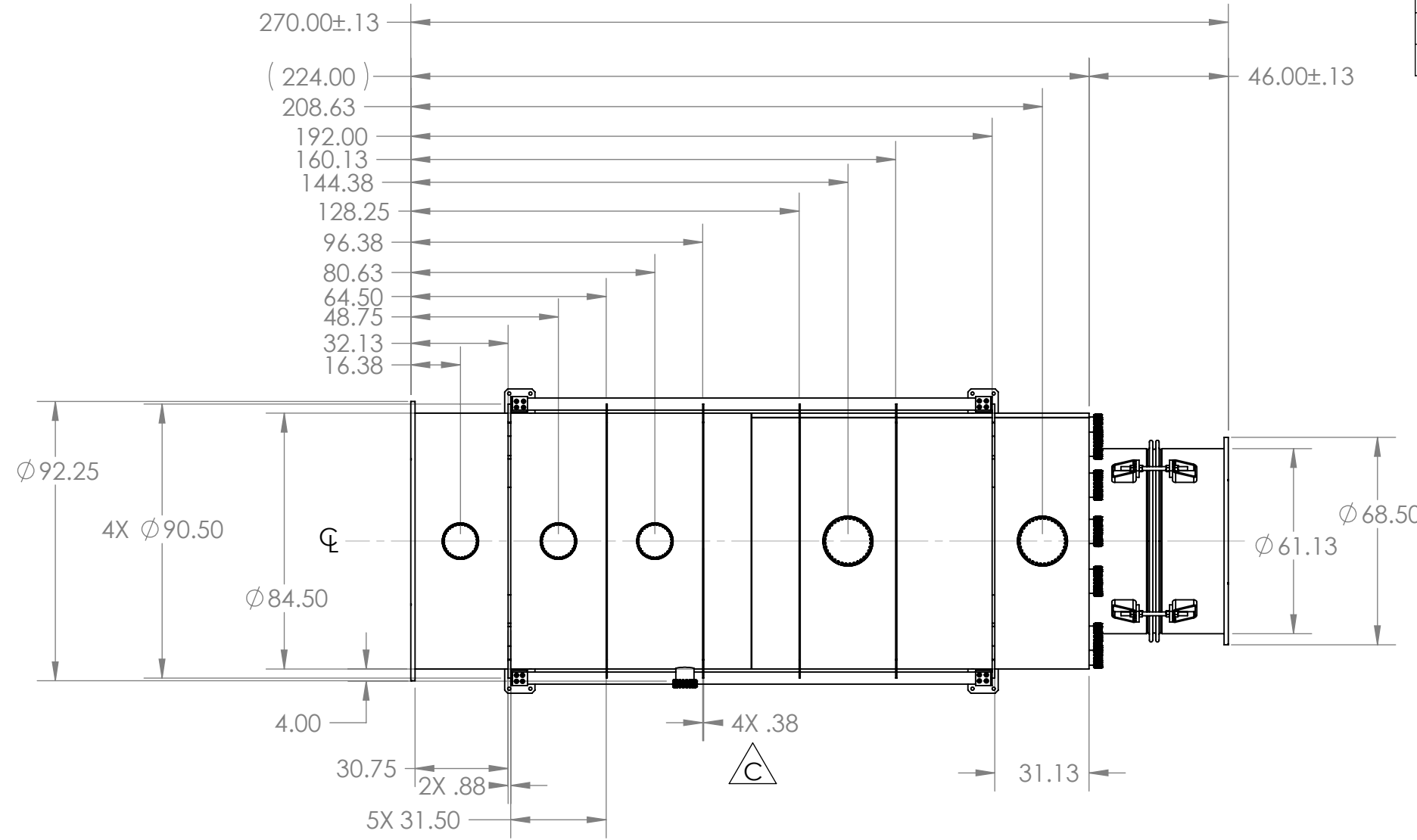
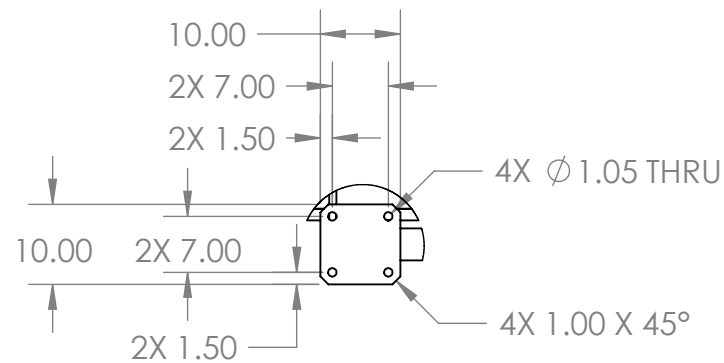


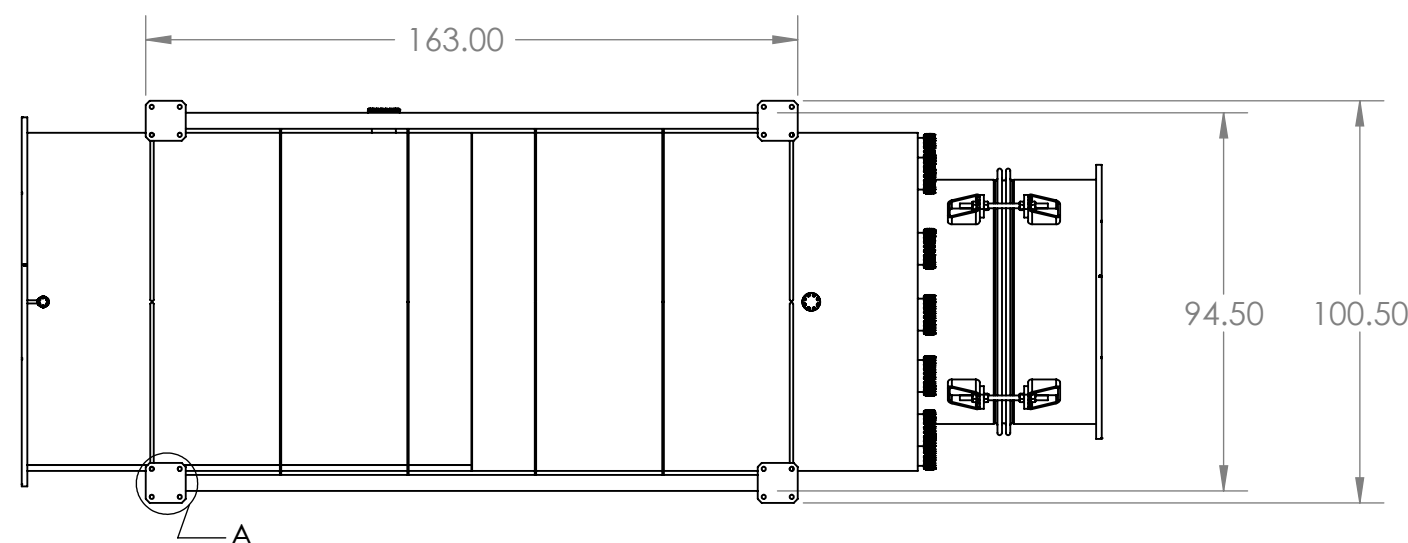
REVISIONS				
ZONE	REV.	DESCRIPTION	DATE	APPROVED
	A	REVISED MODEL TO MATCH CONSTRUCTION MODELS	6/9/10	MKM2
	B	REVISED TITLE BLOCK, GD&T TOLERANCE WAS .010, NOW .03; REMOVED 2.75" CF PUMP OUT PORT	6/24/10	MKM2
	C	ADDED TWO MORE STIFFENERS, REVISED STAND TO MATCH CLARIFIED USE CONDITIONS.	7/2/2010	MKM2
	D	SWITCHED STAND LOCATION, RELEASED FOR PRODUCTION	8/20/2010	MKM2



DETAIL B
 SCALE 1 : 8
 1" SLOT DETAIL
 30 PLACES



DETAIL A
 SCALE 1 : 24
 STAND FOOT DETAILS
 FOUR PLACES



MATERIAL: AISI 304/ AISI 304L DUAL CERT PER SA240
 WEIGHT: 9531.68#

UNLESS OTHERWISE SPECIFIED:
 DIMENSIONS ARE IN INCHES
 TOLERANCES: FINISH
 ANGULAR: ± 1°
 .XX ±.06
 .XXX ±.005
 UNSPECIFIED FILLETS: R.015
 BREAK EDGES .010x45°
 REMOVE ALL BURRS
 // .L WITHIN .03

APPROVALS DATE
 DRAFTER MKM2 6/9/10
 CHECKER RW 6/15/10
 ENGINEER MKM2 6/9/10

GNB CORPORATION
 SCIENTIFIC AND INDUSTRIAL EQUIPMENT
 3200 DWIGHT RD, SUITE 100
 ELK GROVE, CA 95758
 916-395-3003 FAX: 916-395-3363
 www.gnbvalves.com

TITLE:
OUTLINE, TUBE, MC-B #1
 WAMCB1, LAMCB1

THIRD ANGLE PROJECTION

DO NOT SCALE DRAWING

SCALE: 1:48

DWG. NO. **C** 114146-00
 SHEET 1 OF 1

REV
 D

- NOTES:
 1. VACUUM SEALING SURFACE
 2. ALL CONFLAT FLANGES ARE NON-ROTATABLE AND WITH THRU HOLES.