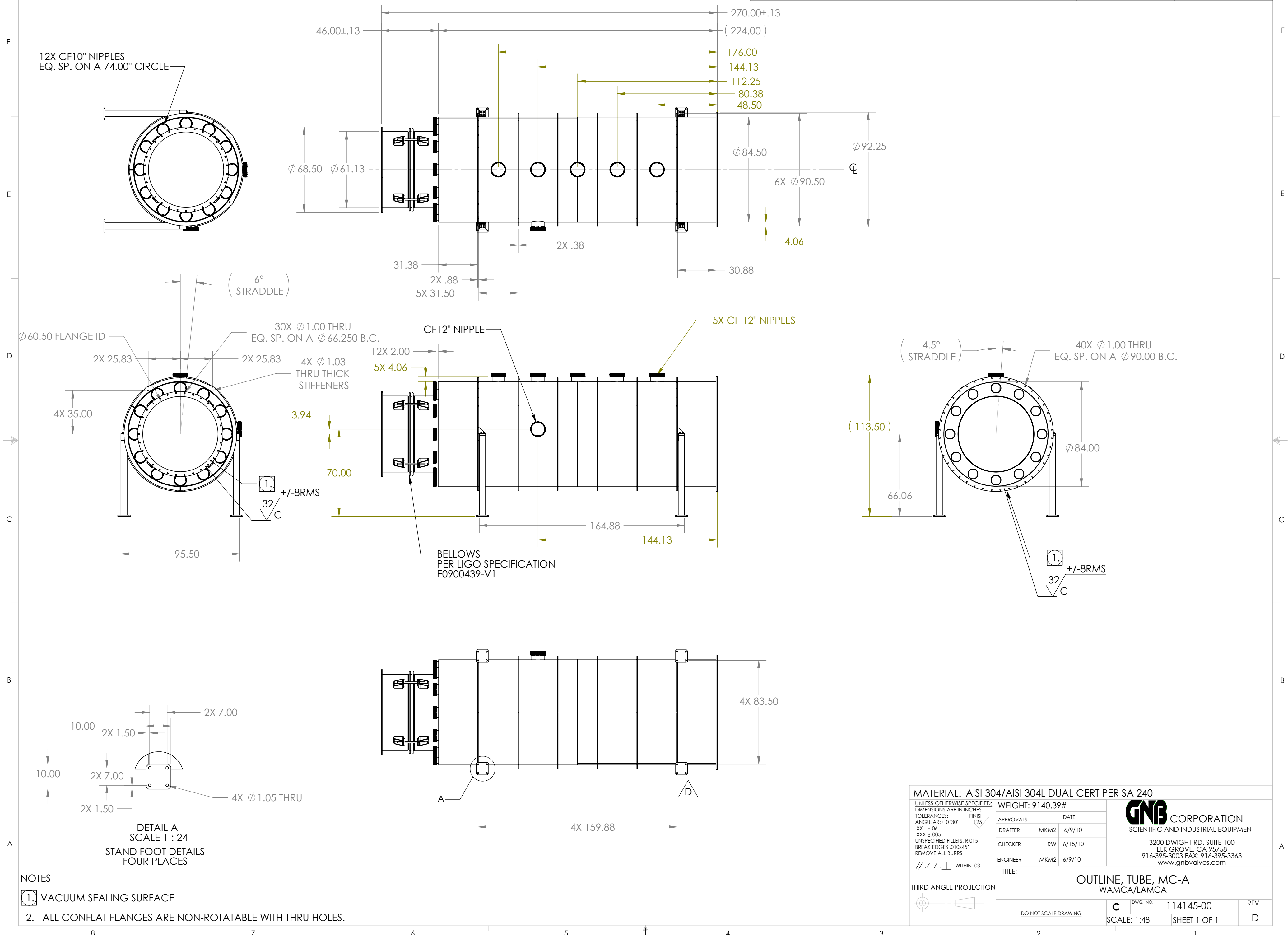


PROPRIETARY AND CONFIDENTIAL
 DRAWING IS THE SOLE PROPERTY OF
 THE GNB CORPORATION. ANY
 REPRODUCTION IN PART OR AS A WHOLE
 WITHOUT THE WRITTEN PERMISSION OF
 THE GNB CORPORATION IS PROHIBITED.

REVISIONS				
ZONE	REV.	DESCRIPTION	DATE	APPROVED
	A	REVISED MODEL TO MATCH CONSTRUCTION MODELS	6/9/10	MKM2
	B	REVISED TOLERANCE BLOCK, GD&T TOLERANCE WAS .01, NOW .03	6/24/10	MKM2
	C	SIDE PORT IS NOW 12" OD CF PORT, RELEASE TO PRODUCTION	8/20/2010	MKM2
	D	RELOCATED STAND MOUNTS PER CUSTOMER REQUEST	3/28/2011	MKM2



NOTES
 ① VACUUM SEALING SURFACE
 2. ALL CONFLAT FLANGES ARE NON-ROTATABLE WITH THRU HOLES.

MATERIAL: AISI 304/AISI 304L DUAL CERT PER SA 240
 UNLESS OTHERWISE SPECIFIED:
 DIMENSIONS ARE IN INCHES
 TOLERANCES: FINISH 125
 ANGULAR: ± 0°30'
 .XX ±.06
 .XXX ±.005
 UNSPECIFIED FILLETS: R.015
 BREAK EDGES .010x45°
 REMOVE ALL BURRS
 // □ ⊥ WITHIN .03

WEIGHT: 9140.39#

APPROVALS	DATE
DRAFTER MKM2	6/9/10
CHECKER RW	6/15/10
ENGINEER MKM2	6/9/10

GNB CORPORATION
 SCIENTIFIC AND INDUSTRIAL EQUIPMENT
 3200 DWIGHT RD. SUITE 100
 ELK GROVE, CA 95758
 916-395-3003 FAX: 916-395-3363
 www.gnbvalves.com

TITLE: OUTLINE, TUBE, MC-A
 WAMCA/LAMCA

THIRD ANGLE PROJECTION

DO NOT SCALE DRAWING

C	DWG. NO. 114145-00	REV D
SCALE: 1:48	SHEET 1 OF 1	