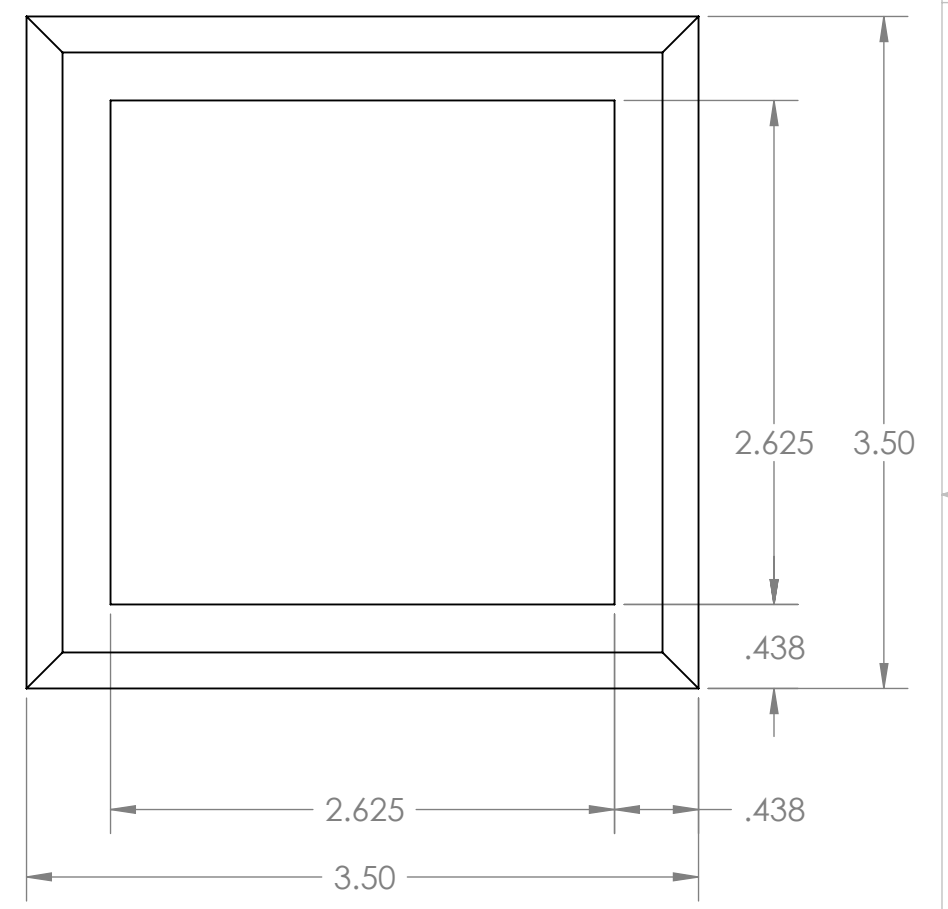
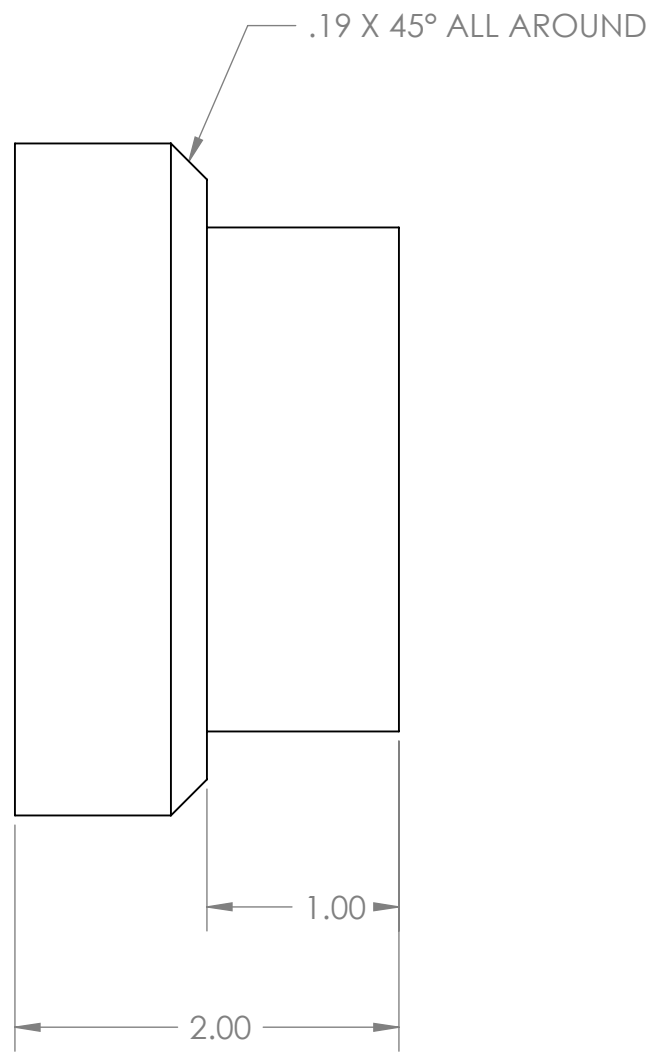
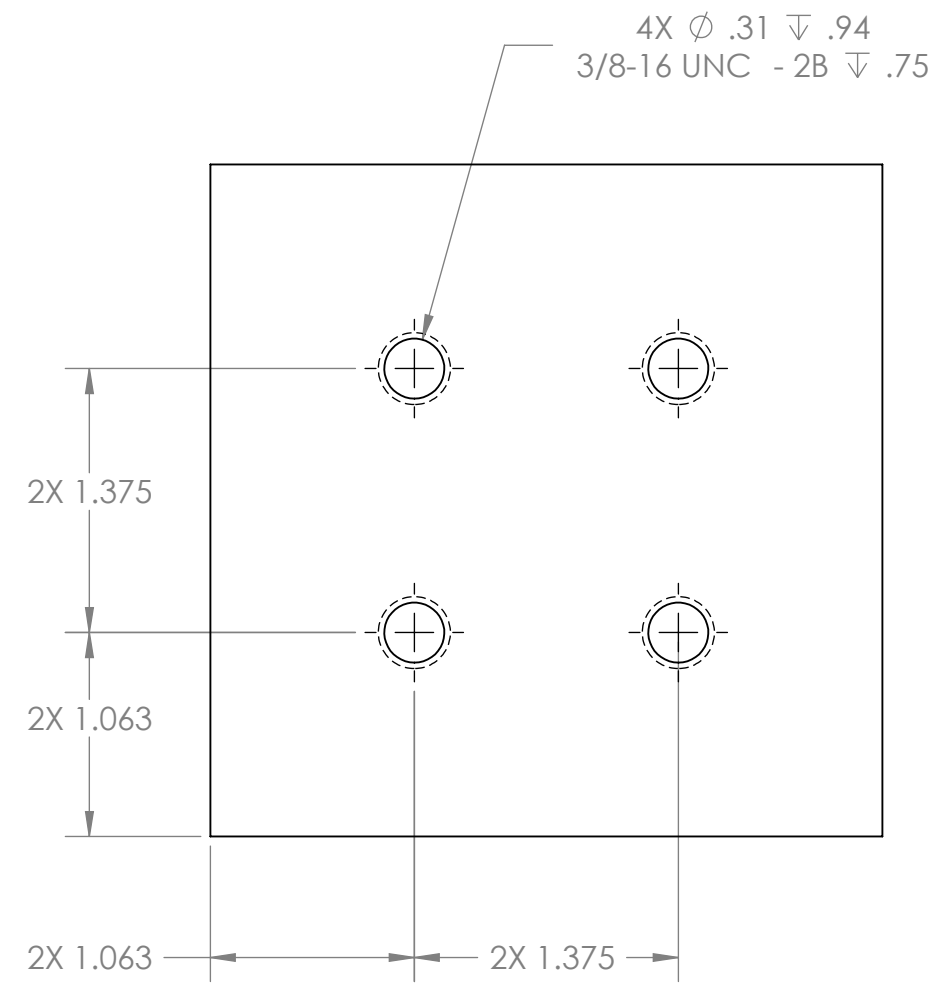


PROPRIETARY AND CONFIDENTIAL  
 THE INFORMATION CONTAINED IN THIS  
 DRAWING IS THE SOLE PROPERTY OF  
 GNB CORPORATION. ANY  
 REPRODUCTION IN PART OR AS A WHOLE  
 WITHOUT THE WRITTEN PERMISSION OF  
 GNB CORPORATION IS PROHIBITED.

REVISIONS				
ZONE	REV.	DESCRIPTION	DATE	APPROVED
	A	RELEASED TO PRODUCTION	8/23/2010	MKM2



DESCRIPTION PLT, 2.00 THK, 3.5 WD, 3.5 LG  
 MATERIAL: ASTM A36 Steel

UNLESS OTHERWISE SPECIFIED:  
 DIMENSIONS ARE IN INCHES  
 TOLERANCES: FINISH 125  
 ANGULAR: ±0°30'  
 .XX ± .03  
 .XXX ± .005  
 UNSPECIFIED FILLETS: R.015  
 BREAK EDGES .010x45°  
 REMOVE ALL BURRS

//, □, ⊥ WITHIN .03

THIRD ANGLE PROJECTION

WEIGHT: 5.28#

APPROVALS	DATE
DRAFTER MKM2	7/30/10
CHECKER	
ENGINEER MKM2	7/30/10

**GNB CORPORATION**  
 SCIENTIFIC AND INDUSTRIAL EQUIPMENT  
 3200 DWIGHT RD. SUITE 100  
 ELK GROVE, CA, 95758  
 916-395-3003 FAX: 916-395-3363  
 www.gnbvalves.com

TITLE: **PLATE, BOLT, STAND, A-18**

DO NOT SCALE DRAWING

DWG. NO. **B** 114442-00M  
 SCALE: 1:1 SHEET 1 OF 1

REV **A**

8 7 6 5 4 3 2 1

8 7 6 5 4 3 2 1