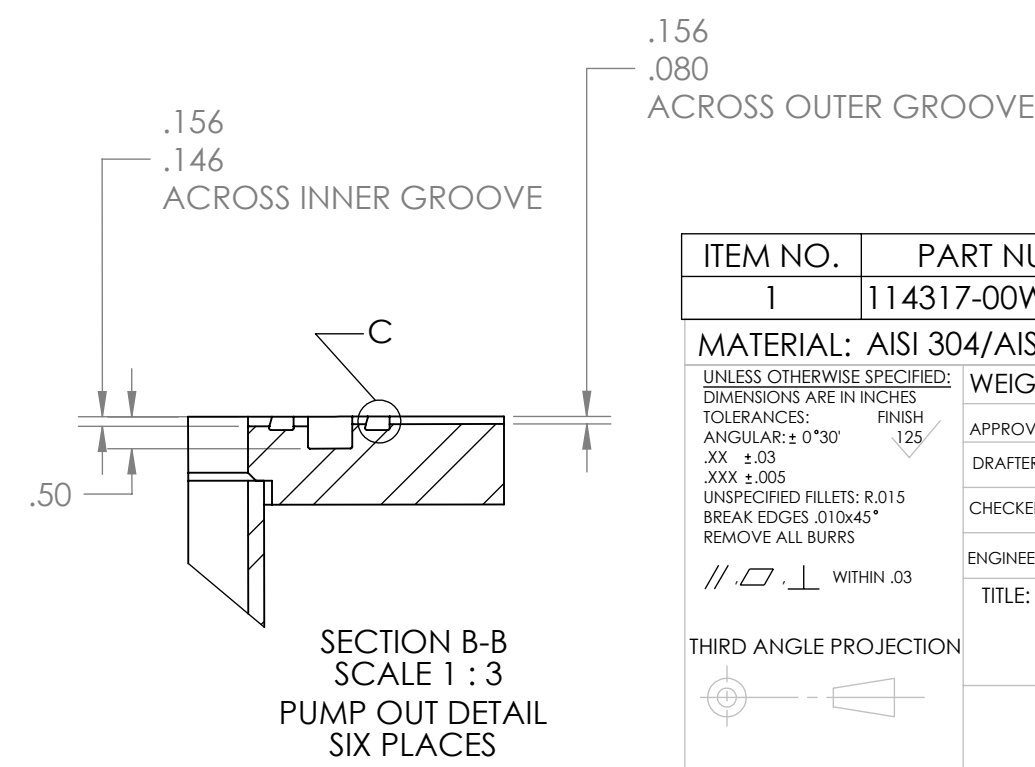
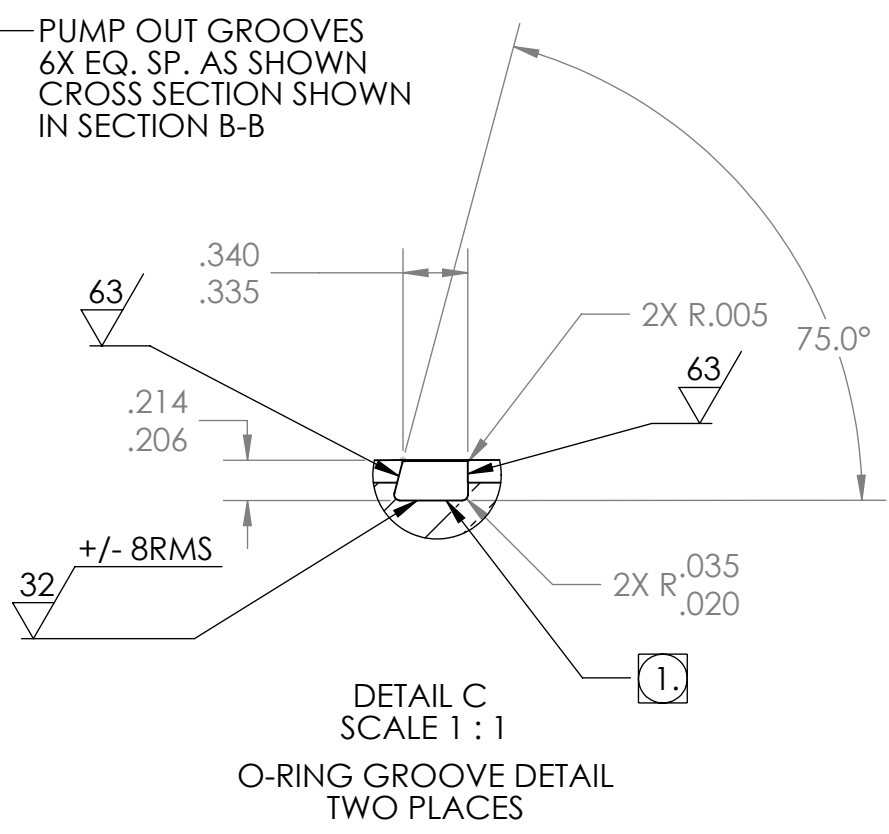
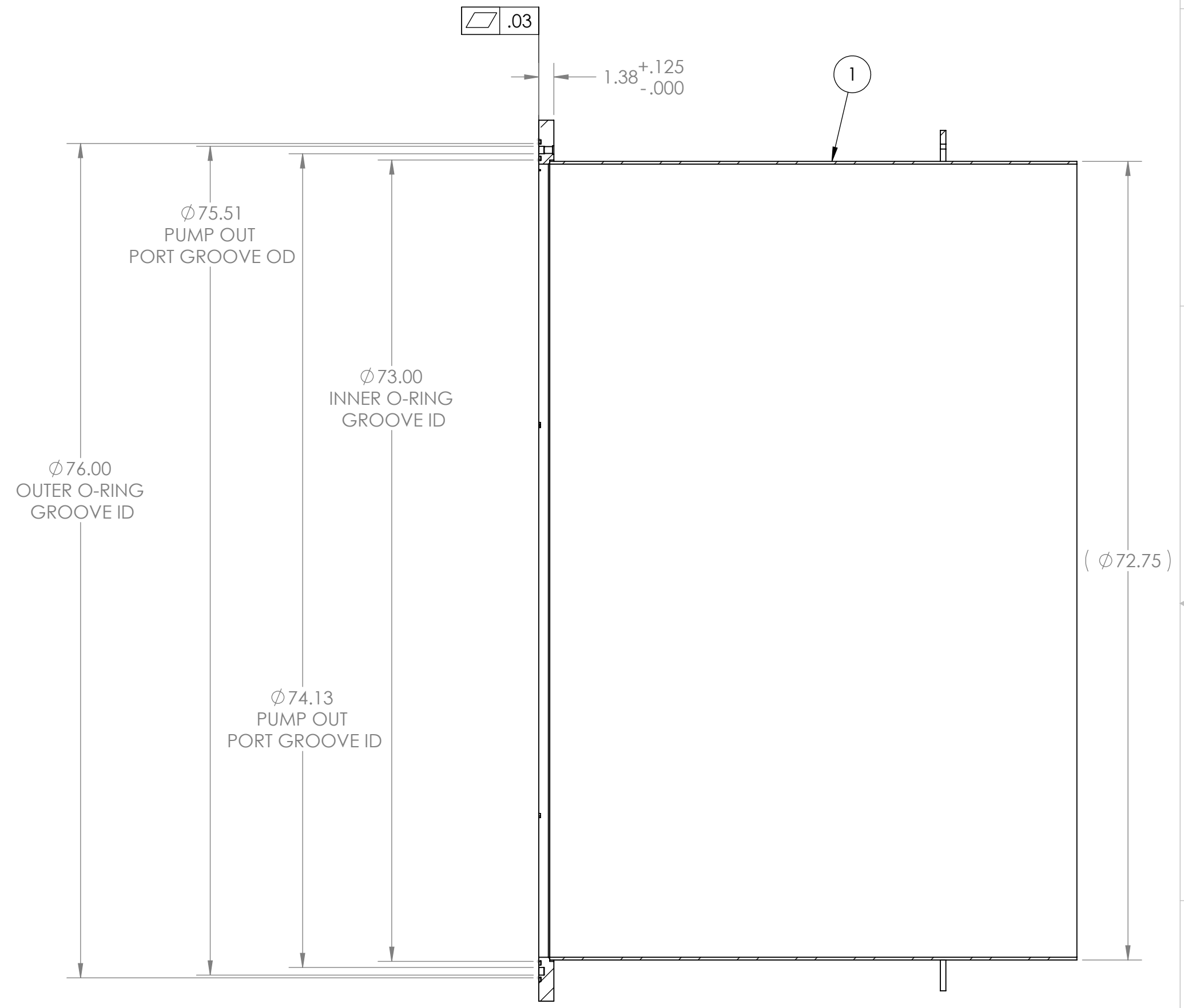
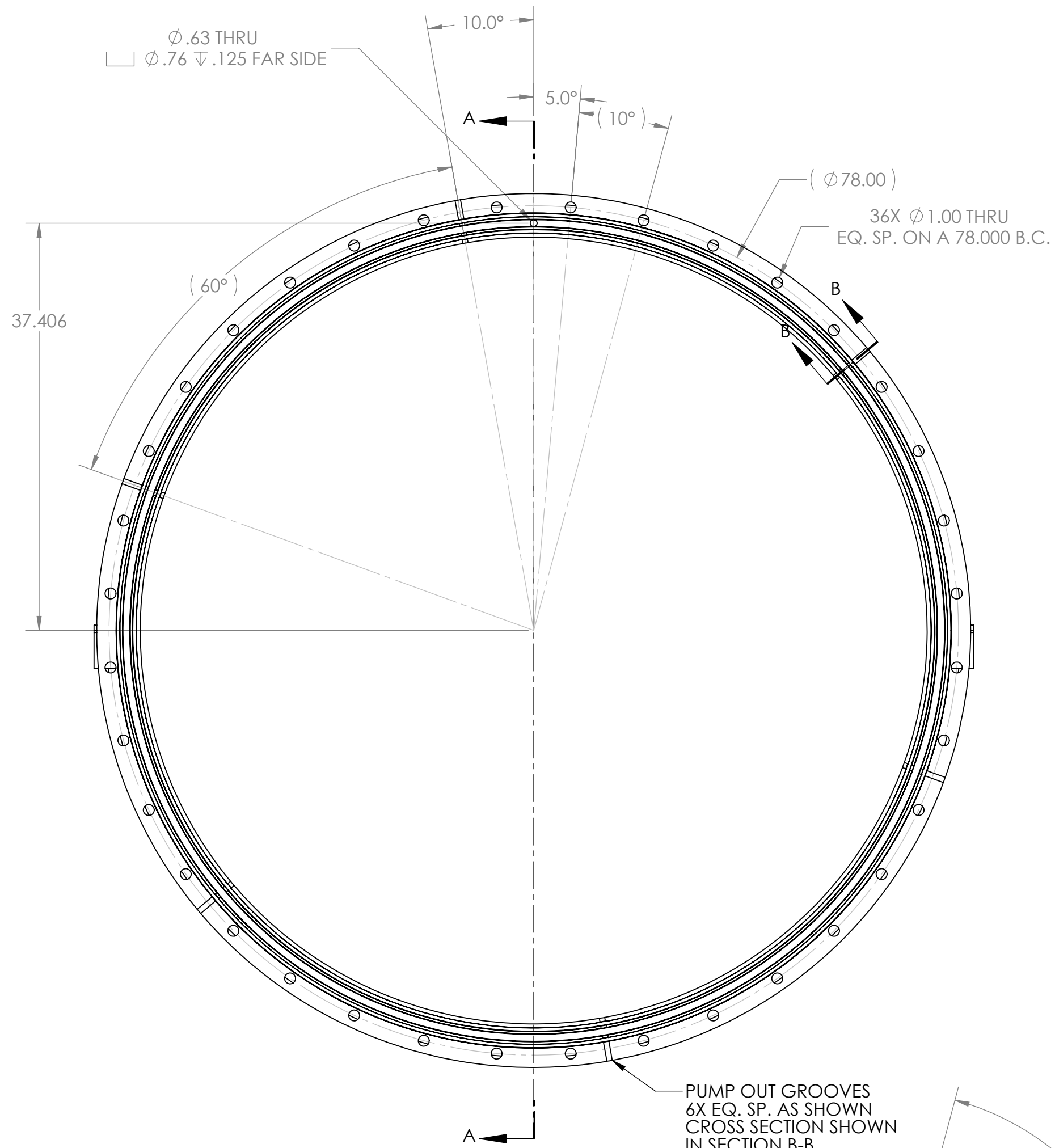


PROPRIETARY AND CONFIDENTIAL  
 DRAWING IS THE SOLE PROPERTY OF  
 THE GNB CORPORATION. ANY  
 REPRODUCTION IN PART OR AS A WHOLE  
 WITHOUT THE WRITTEN PERMISSION OF  
 THE GNB CORPORATION IS PROHIBITED.

REVISIONS				
ZONE	REV.	DESCRIPTION	DATE	APPROVED
	A	RELEASED TO PRODUCTINO	8/23/2010	MKM2



- NOTES:
- VACUUM SEALING SURFACE
  - THE FOLLOWING ARE NOT ALLOWED: GRINDING, HONING, LAPPING, POLISHING, BUFFING, SANDING, BLASTING.
  - NO HYDROCARBONS ALLOWED IN THE COOLANT. COOLANT LIMITS AS FOLLOWS
    - WATER LEACHABLE CHLORIDES: 100PPM
    - TOTAL HALOGENS (INCLUDING CHLORIDES): 1000PPM
    - TOTAL SULFUR: 1000PPM
  - DO NOT ALLOW PART TO BE CONTAMINATED BY CARBON STEEL OR IRON CONTACT.
  - MACHINING TO BE IN LINE WITH LIGO SPECIFICATION E0900406, LATEST REVISION.

ITEM NO.	PART NUMBER	DESCRIPTION	QTY.
1	114317-00WS	WELDMENT, BASE, ADAPTER A-18	1

MATERIAL: AISI 304/AISI 304L DUAL CERT PER SA 240  
 WEIGHT: 1220.23#

APPROVALS	DATE
DRAFTER MKM2	6/28/10
CHECKER RW	7/9/10
ENGINEER MKM2	6/28/10

UNLESS OTHERWISE SPECIFIED:  
 DIMENSIONS ARE IN INCHES  
 TOLERANCES: FINISH  
 ANGULAR: ± 0°30'  
 .XX ±.03  
 .XXX ±.005  
 UNSPECIFIED FILLETS: R.015  
 BREAK EDGES .010x45°  
 REMOVE ALL BURRS  
 // □ ⊥ WITHIN .03

THIRD ANGLE PROJECTION

DO NOT SCALE DRAWING

SCALE	DWG. NO.	REV
SCALE: 1:10	114316-00S	A

SHEET 1 OF 1



BASE, TUBE, ADAPTER A-18