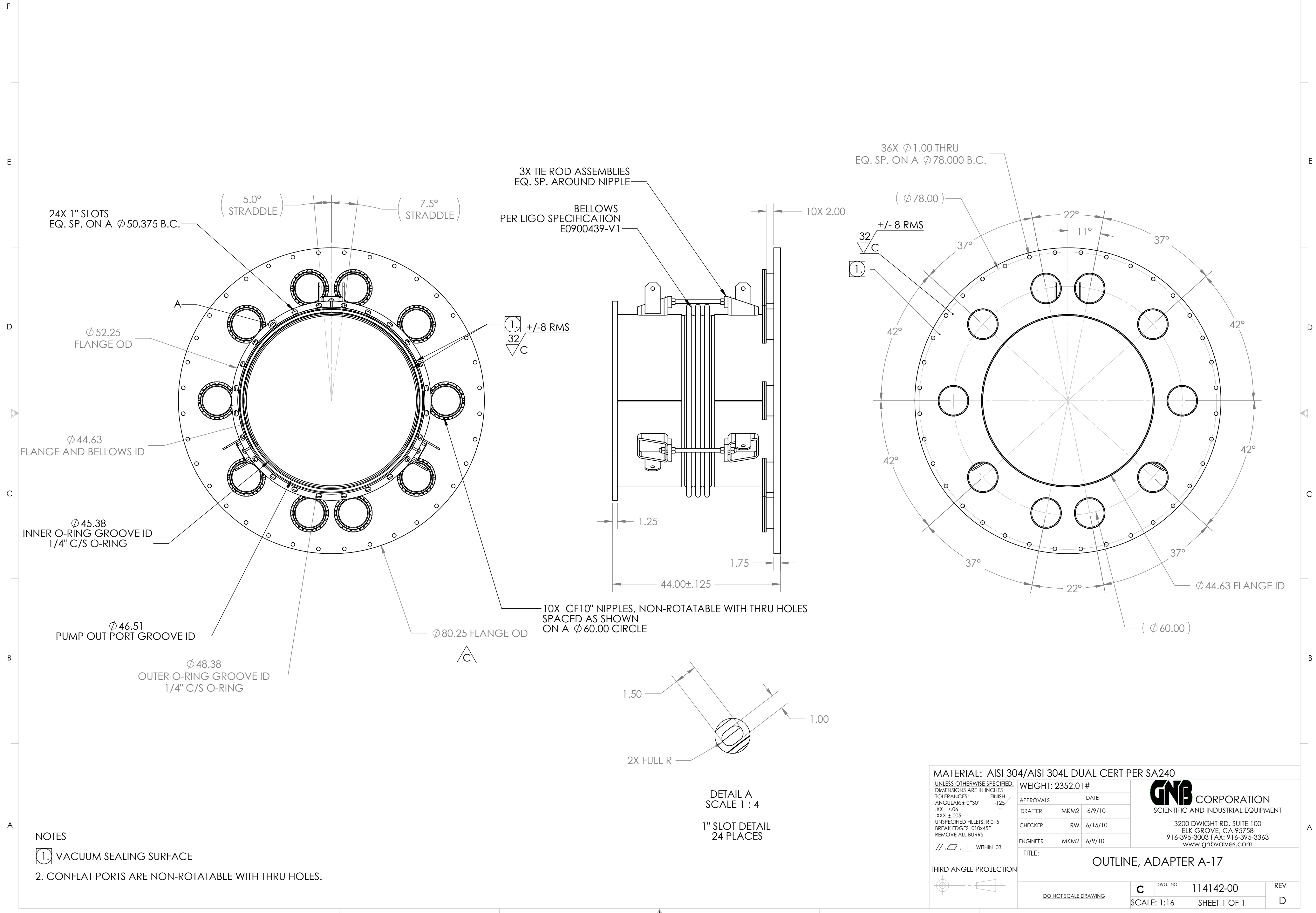


PROPRIETARY AND CONFIDENTIAL
 DRAWING IS THE SOLE PROPERTY OF
 THE GNB CORPORATION. ANY
 REPRODUCTION IN PART OR AS A WHOLE
 WITHOUT THE WRITTEN PERMISSION OF
 THE GNB CORPORATION IS PROHIBITED.

REVISIONS				
ZONE	REV.	DESCRIPTION	DATE	APPROVED
	A	REVISED MODEL TO MATCH MFG. PROCESSES	6/9/10	MKM2
	B	REVISED TOLERANCE BLOCK, GD&T TOLERANCE WAS .01, NOW .03	6/24/2010	MKM2
	C	80.00 WAS 80.30, ADDED THICKNESSES OF FLANGES, BIG FLANGE THICKNESS INCREASED TO 1.75	7/20/2010	MKM2
	D	RELEASED TO PRODUCTION	8/20/2010	MKM2



NOTES

1 VACUUM SEALING SURFACE

2. CONFLAT PORTS ARE NON-ROTATABLE WITH THRU HOLES.

MATERIAL: AISI 304/AISI 304L DUAL CERT PER SA240

UNLESS OTHERWISE SPECIFIED:
 DIMENSIONS ARE IN INCHES
 TOLERANCES: FINISH

APPROVALS	DATE
DRAFTER MKM2	6/9/10
CHECKER RW	6/15/10
ENGINEER MKM2	6/9/10

WEIGHT: 2352.01#

GNB CORPORATION
 SCIENTIFIC AND INDUSTRIAL EQUIPMENT

3200 DWIGHT RD. SUITE 100
 ELK GROVE, CA 95758
 916-395-3003 FAX: 916-395-3363
 www.gnbvalves.com

TITLE: **OUTLINE, ADAPTER A-17**

THIRD ANGLE PROJECTION

DO NOT SCALE DRAWING

C DWG. NO. 114142-00 REV D

SCALE: 1:16 SHEET 1 OF 1