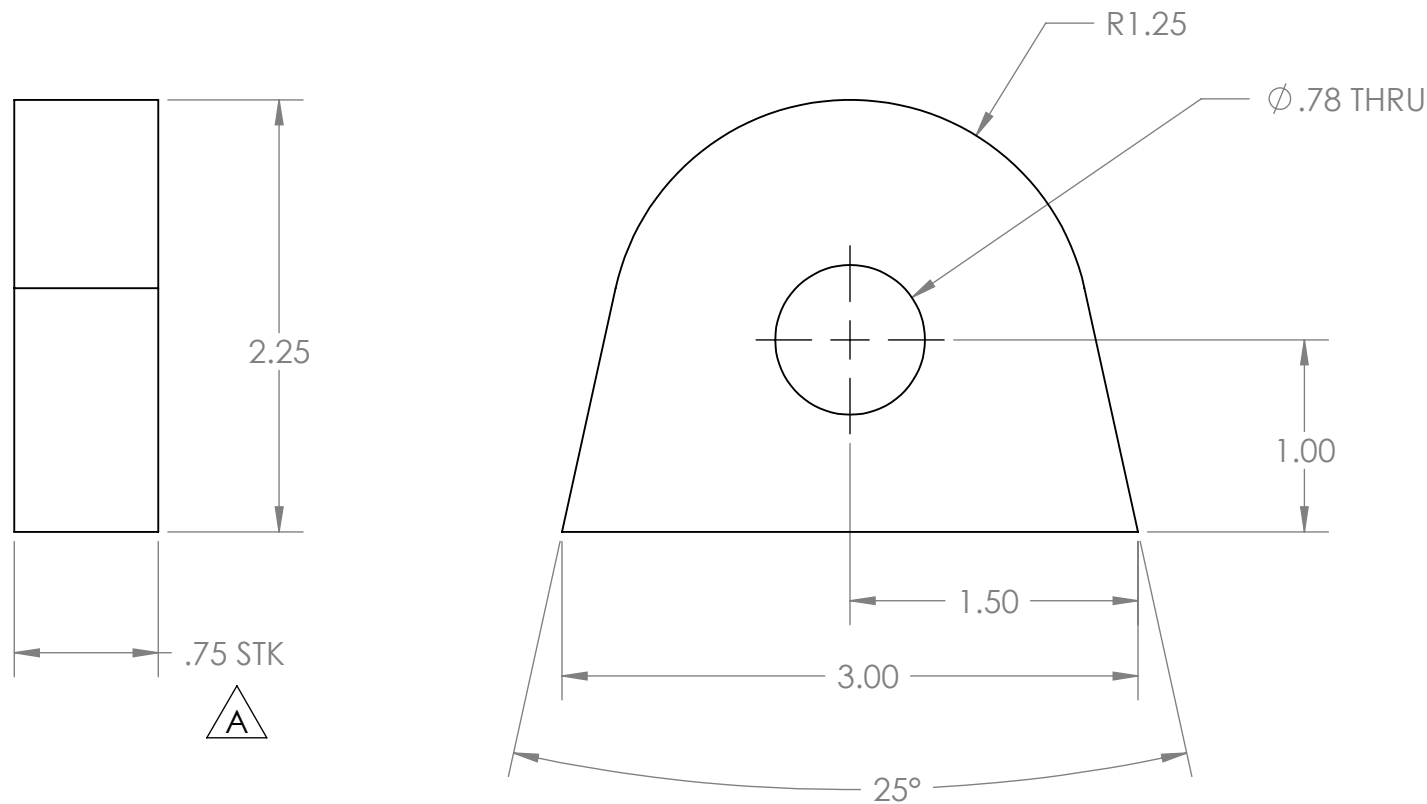


PROPRIETARY AND CONFIDENTIAL
 THE INFORMATION CONTAINED IN THIS
 DRAWING IS THE SOLE PROPERTY OF
 GNB CORPORATION. ANY
 REPRODUCTION IN PART OR AS A WHOLE
 WITHOUT THE WRITTEN PERMISSION OF
 GNB CORPORATION IS PROHIBITED.

REVISIONS				
ZONE	REV.	DESCRIPTION	DATE	APPROVED
	A	ADDED .STK CALLOUT, RELEASED TO PRODUCTION	8/23/2010	MKM2



DESCRIPTION: PLT, .75 THK, 2.25 WD, 3.00 LG
 MATERIAL: AISI 304/AISI 304L DUAL CERT PER SA240
 UNLESS OTHERWISE SPECIFIED: WEIGHT: 1.03 #

DIMENSIONS ARE IN INCHES
 TOLERANCES: FINISH
 ANGULAR: ± 0°30' 125
 .XX ± .01
 .XXX ± .005
 UNSPECIFIED FILLETS: R.015
 BREAK EDGES .010 x 45°
 REMOVE ALL BURRS
 // □ ⊥ WITHIN .03

THIRD ANGLE PROJECTION

APPROVALS

	NAME	DATE
DRAFTER	MKM2	6/11/10
CHECKER	RW	6/14/10
ENGINEER	MKM2	6/11/10

DO NOT SCALE DRAWING

GNB CORPORATION
 SCIENTIFIC AND INDUSTRIAL EQUIPMENT
 3200 DWIGHT RD, SUITE 100
 ELK GROVE, CA 95758
 916-395-3003 FAX: 916-395-3363
 WWW.GNBVALVES.COM

TITLE: LUG, LIFTING, ADAPTERS

DWG. NO. 114294-00S
 SCALE: 1:1 SHEET 1 OF 1

REV A