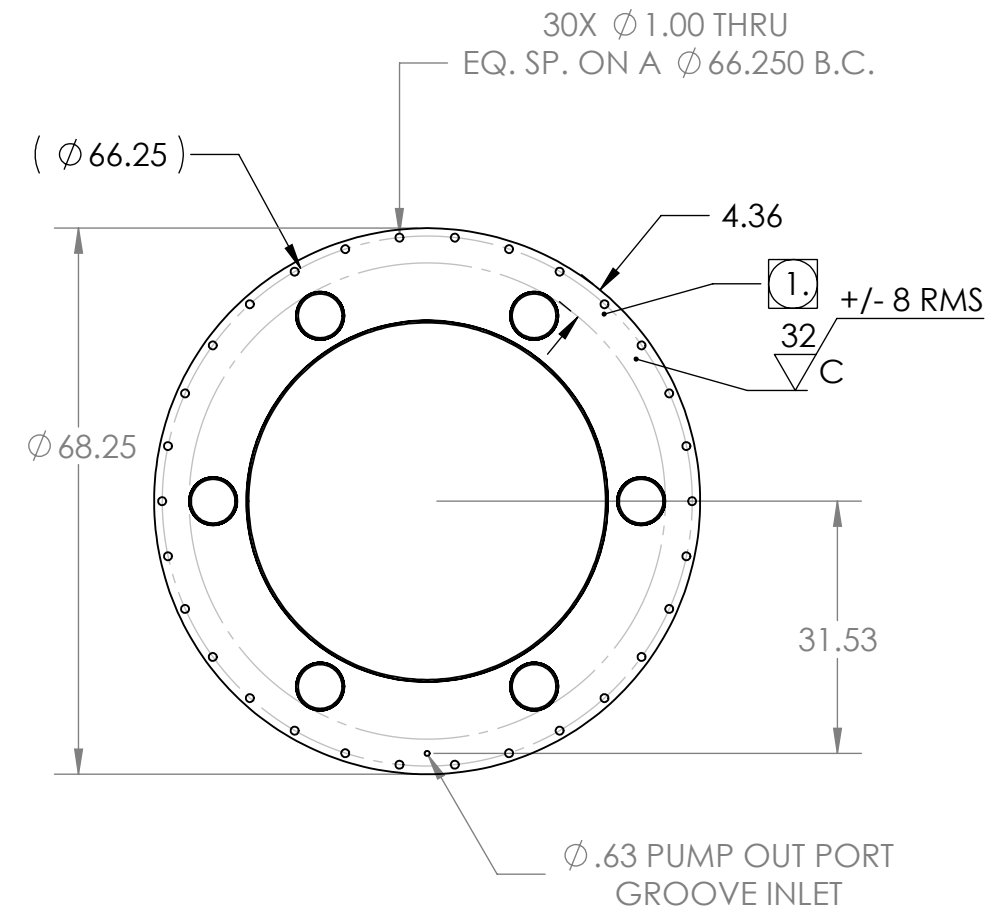
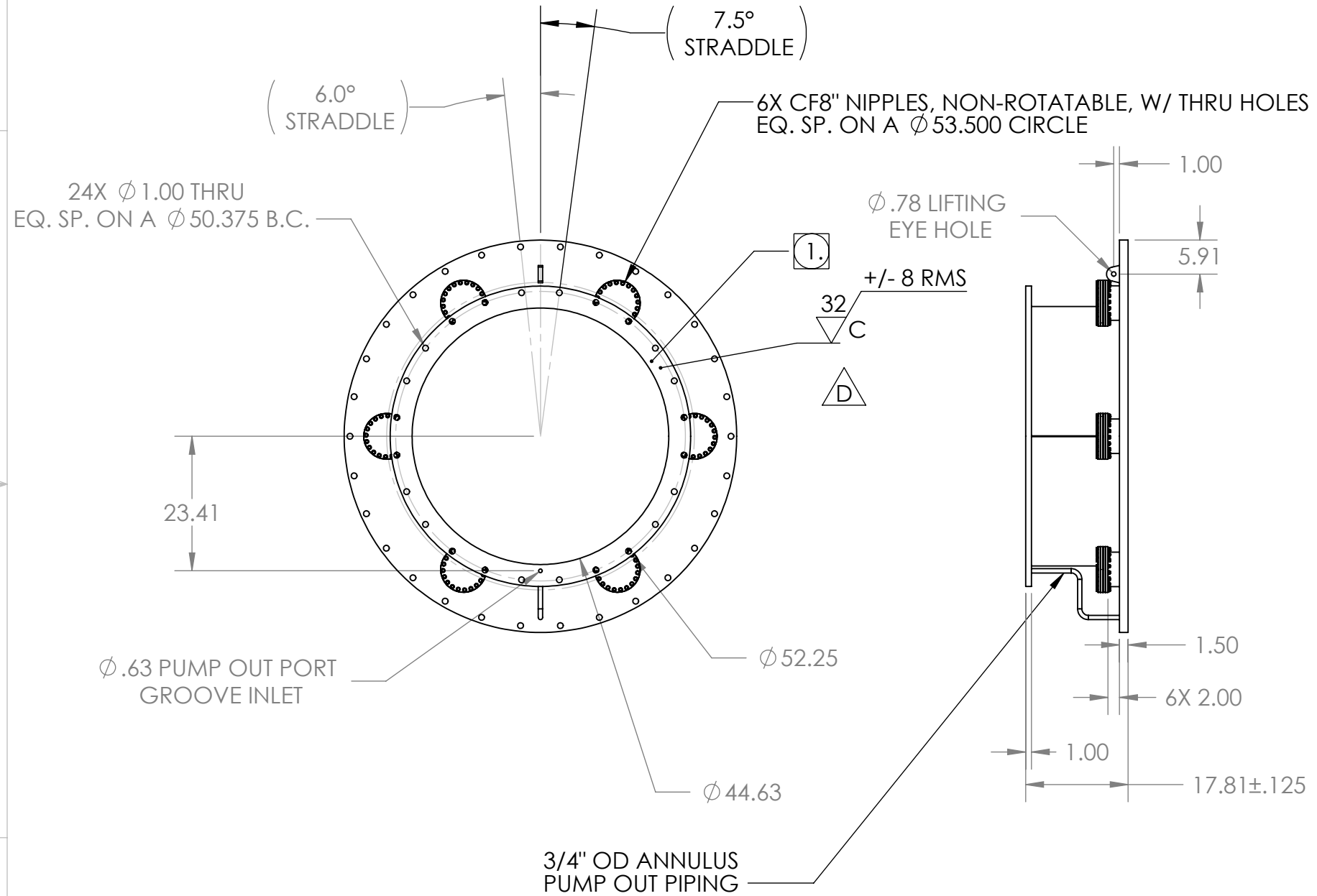


PROPRIETARY AND CONFIDENTIAL
 THE INFORMATION CONTAINED IN THIS
 DRAWING IS THE SOLE PROPERTY OF
 GNB CORPORATION. ANY
 REPRODUCTION IN PART OR AS A WHOLE
 WITHOUT THE WRITTEN PERMISSION OF
 GNB CORPORATION IS PROHIBITED.

REVISIONS				
ZONE	REV.	DESCRIPTION	DATE	APPROVED
	A	REVISED MODEL TO MATCH MFG. PROCESSES	6/9/10	MKM2
	B	REVISED TOLERANCE BLOCK, GD&T TOLERANCE WAS .05, NOW .03	6/24/10	MKM2
	C	REVISED TOLERANCES ON BOLT CIRCLES, 68.25 WAS 68.50; CALLED OUT FLANGE THICKNESSES, LARGE FLANGE IS NOW 1.5 THK. WAS 1.0	7/20/10	MKM2
	D	ADDED FINISH CALL-OUTS, RELEASED TO PRODUCTION	8/20/2010	MKM2



- NOTES
- ① VACUUM SEALING SURFACE
 - 2. ALL CONFLAT FLANGES ARE NON-ROTATABLE WITH THRU HOLES.

MATERIAL: AISI 304/AISI 304L DUAL CERT PER SA240

UNLESS OTHERWISE SPECIFIED:
 DIMENSIONS ARE IN INCHES
 TOLERANCES:
 ANGULAR: ± 0°30'
 .XX ± .06
 .XXX ± .005
 UNSPECIFIED FILLETS: R.015
 BREAK EDGES .010x45°
 REMOVE ALL BURRS

FINISH 125

APPROVALS: DRAFTER MKM2, CHECKER RW, ENGINEER MKM2, DATE 6/9/10, 6/14/10, 6/9/10

WEIGHT: 1276.64#

GNB CORPORATION
 SCIENTIFIC AND INDUSTRIAL EQUIPMENT
 3200 DWIGHT RD. SUITE 100
 ELK GROVE, CA, 95758
 916-395-3003 FAX: 916-395-3363
 www.gnbvalves.com

TITLE: OUTLINE, ADAPTER A-16

DO NOT SCALE DRAWING

THIRD ANGLE PROJECTION

SCALE: 1:24

DWG. NO. 114141-00

SHEET 1 OF 1

REV D