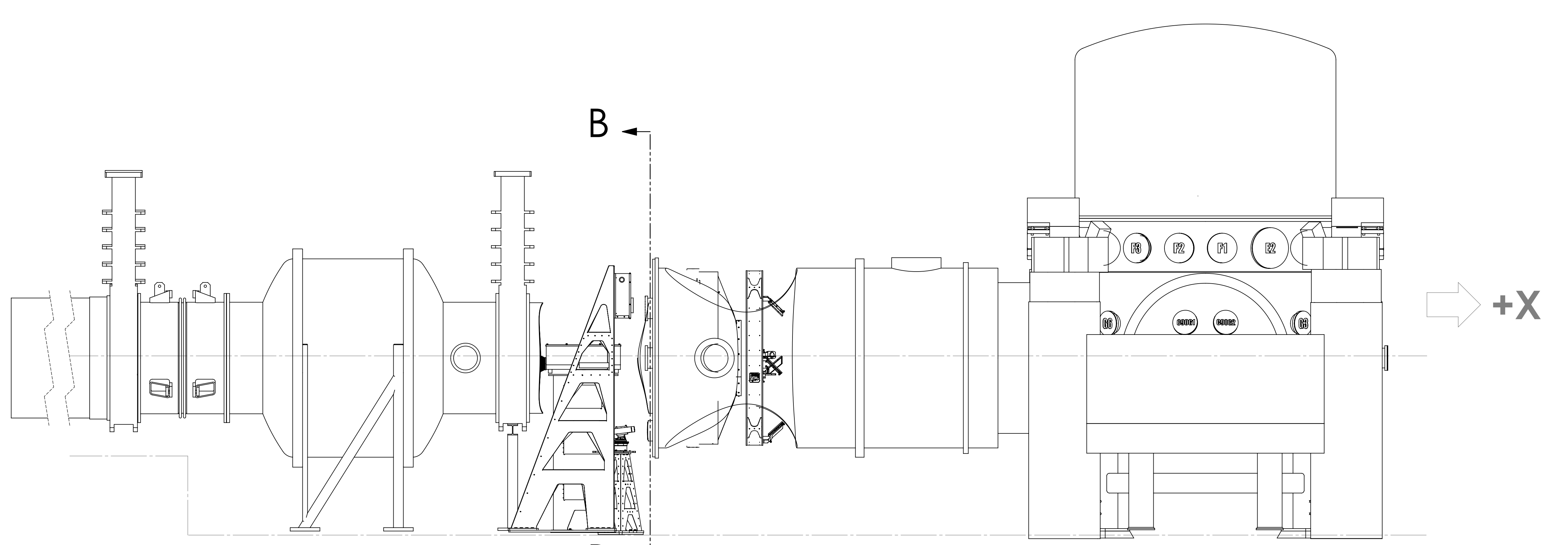
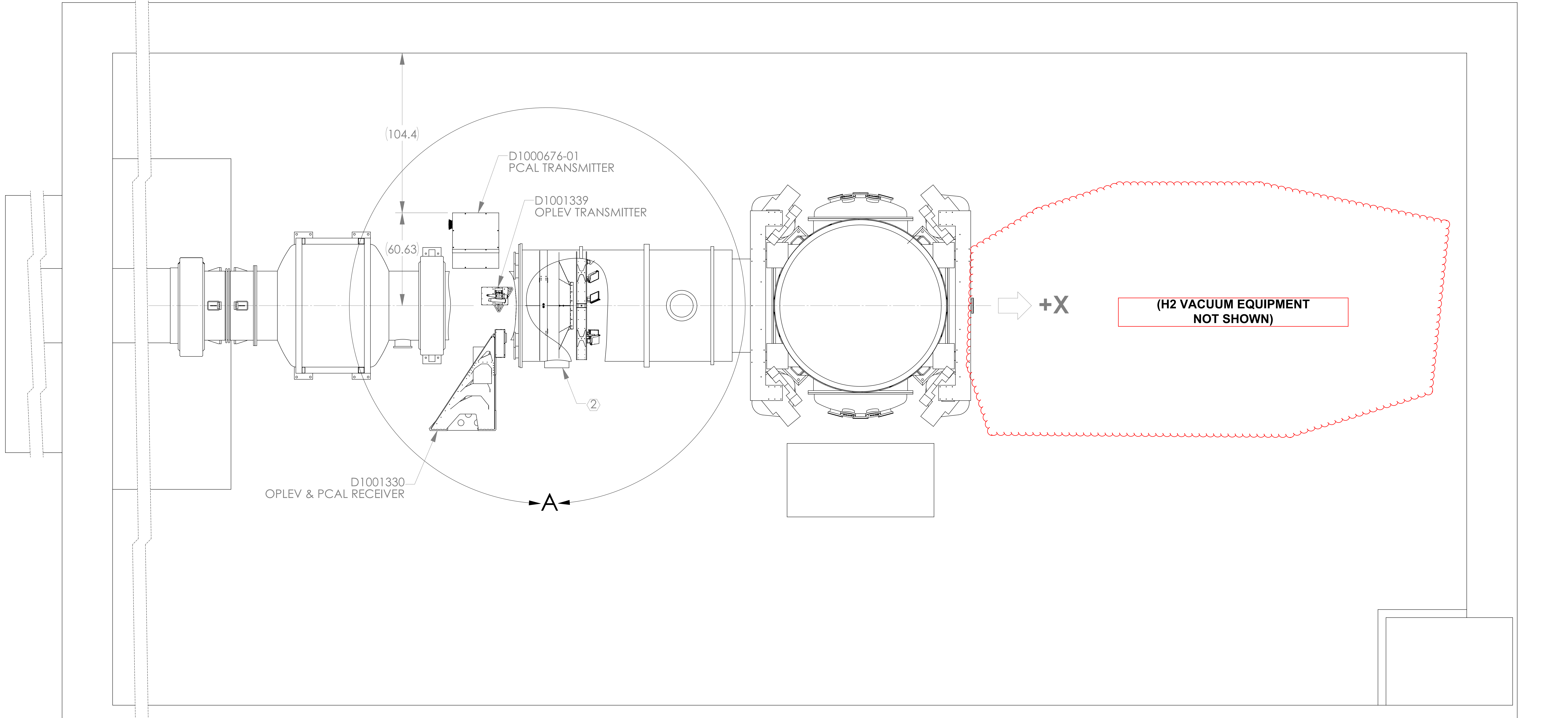
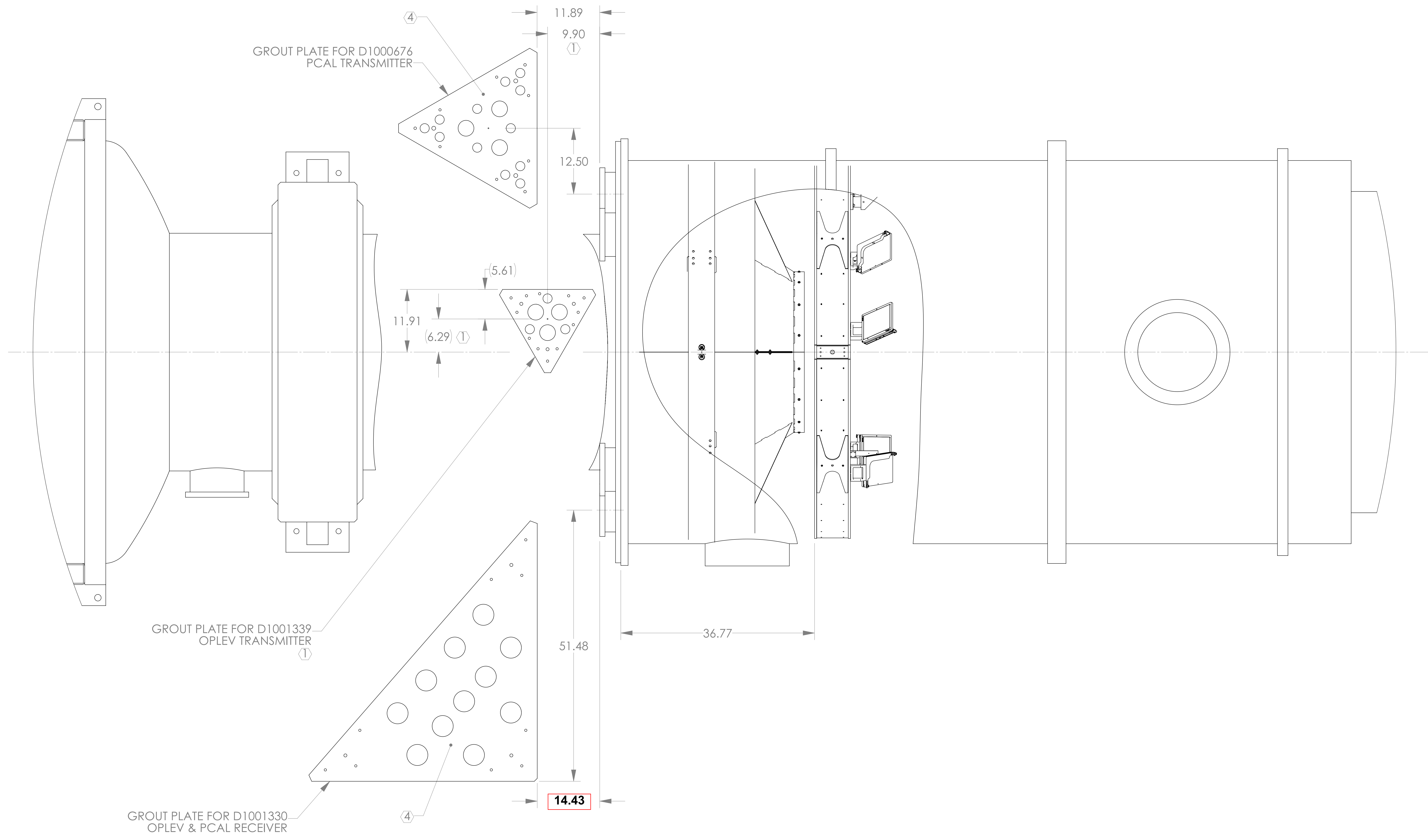


| REV. | DATE | DCN # | BOM # |
|------|-------------|-------------|-------|
| v4 | 10 MAY 2013 | E1300418-x0 | - |
| - | - | - | - |
| - | - | - | - |

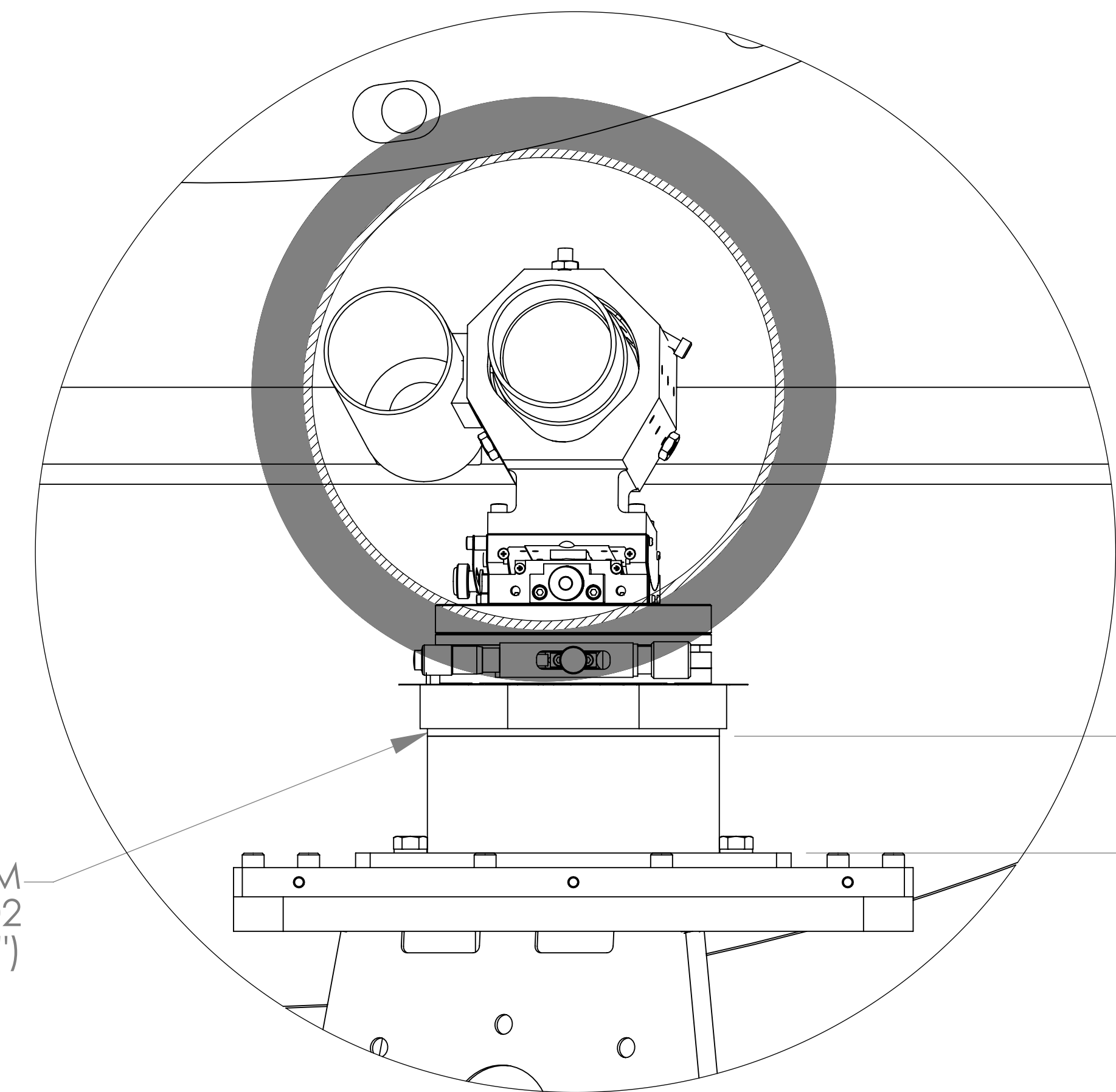


- NOTES:**
- NOTED GROUT PLATE INSTALLATION MAY BE ROTATED 180° ABOUT ITS CENTER HOLE IF PREFERABLE. ANCHOR PATTERN MUST BE ROTATED ACCORDINGLY.
 - TURBO PUMP AT THE NOTED VACUUM PORT MUST BE ORIENTED APPROPRIATELY TO PROVIDE CLEARANCE FOR THE INSTALLED D1001330 OPLEV & PCAL RECEIVER.
 - THE MEASURED HEIGHT FROM THE A-1 ADAPTER HORIZONTAL MIDPLANE VIEW PORT TO THE VEA FLOOR IS 72.75.
 - PCAL GROUT PLATES TO BE LEVEL WITHIN .06" OVER ENTIRE SURFACE.

| | | | | | | | |
|--|--|---|--|---|--|--|--|
| DIMENSIONS ARE IN INCHES TOLERANCES: .X ± .1 .XX ± .05 ANGULAR ± ° | | NOTES AND TOLERANCES: (UNLESS OTHERWISE SPECIFIED) 1- INTERPRET DRAWING PER ASME Y14.5-1994. 2- REMOVE ALL SHARP EDGES, R.02 MIN. 3- DO NOT SCALE FROM DRAWING. 4- ALL MACHINING FLUIDS MUST BE FULLY SYNTHETIC, FULLY WATER-SOLUBLE, AND FREE OF SULFUR, SILICONE, AND CHLORINE. | | LIGO CALIFORNIA INSTITUTE OF TECHNOLOGY MASSACHUSETTS INSTITUTE OF TECHNOLOGY | | PART NAME Floor Occupancy, OpLev & PCal, LHO X-End Station | |
| MATERIAL -- | | FINISH -- μinch | | SYSTEM ADVANCED LIGO | | SUB-SYSTEM AOS | |
| | | | | DESIGNER C. CONLEY | | SIZE DWG. NO. E 1000719-v4 | |
| | | | | DRAFTER SEE DCN | | DATE 10 NOV 2012 | |
| | | | | CHECKER SEE DCN | | SCALE: NONE; PROJECTION: | |
| | | | | APPROVAL SEE DCN | | SHEET 1 OF 3 | |



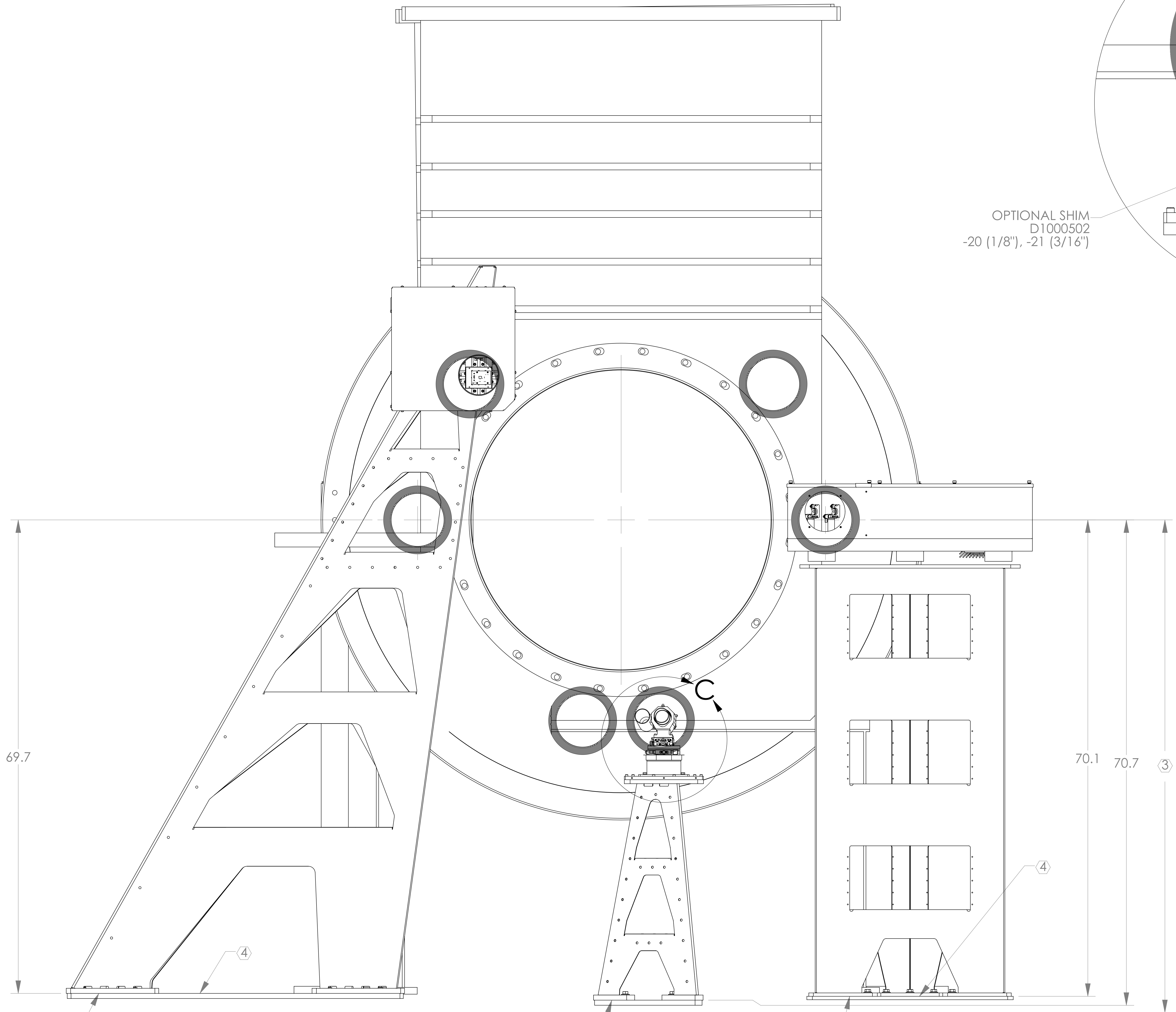
DETAIL A



2.00
SPACER TUBE
D1000502-12

OPTIONAL SHIM
D1000502
-20 (1/8"), -21 (3/16")

DETAIL C



D1001330
OPLEV & PCAL
RECEIVER

D1001339
OPLEV TRANSMITTER

D1000676-01
PCAL TRANSMITTER

SECTION B-B