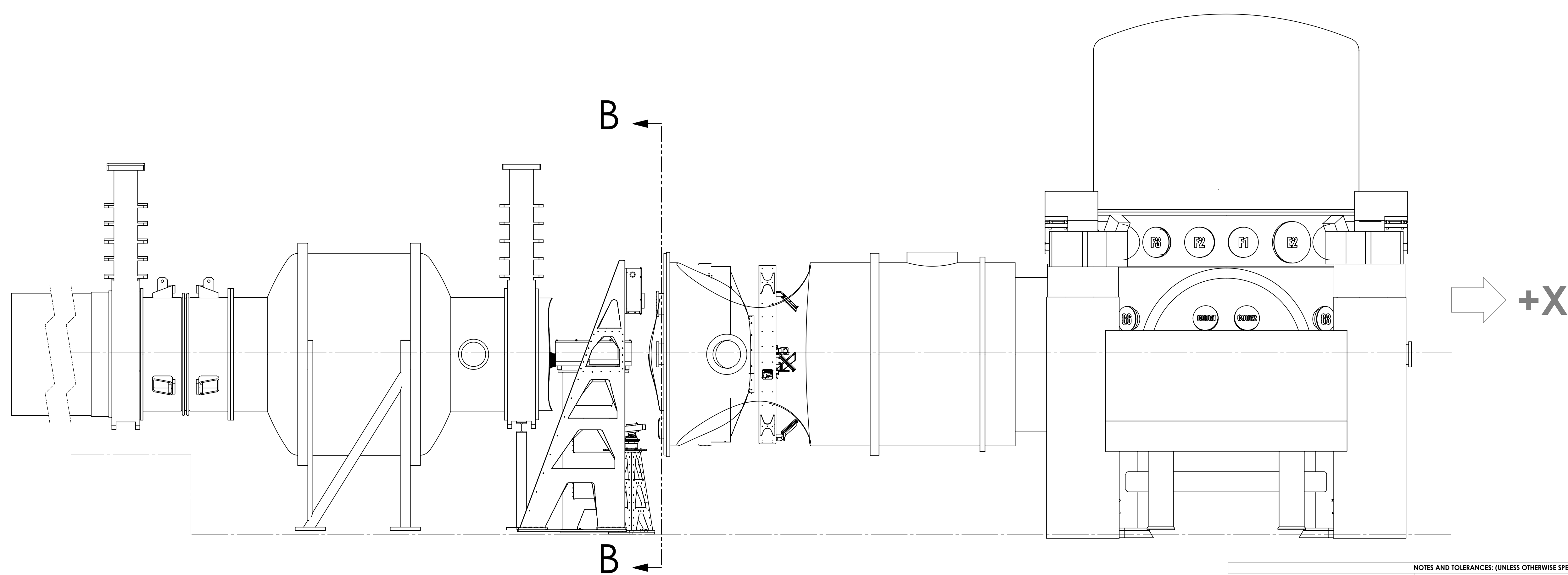
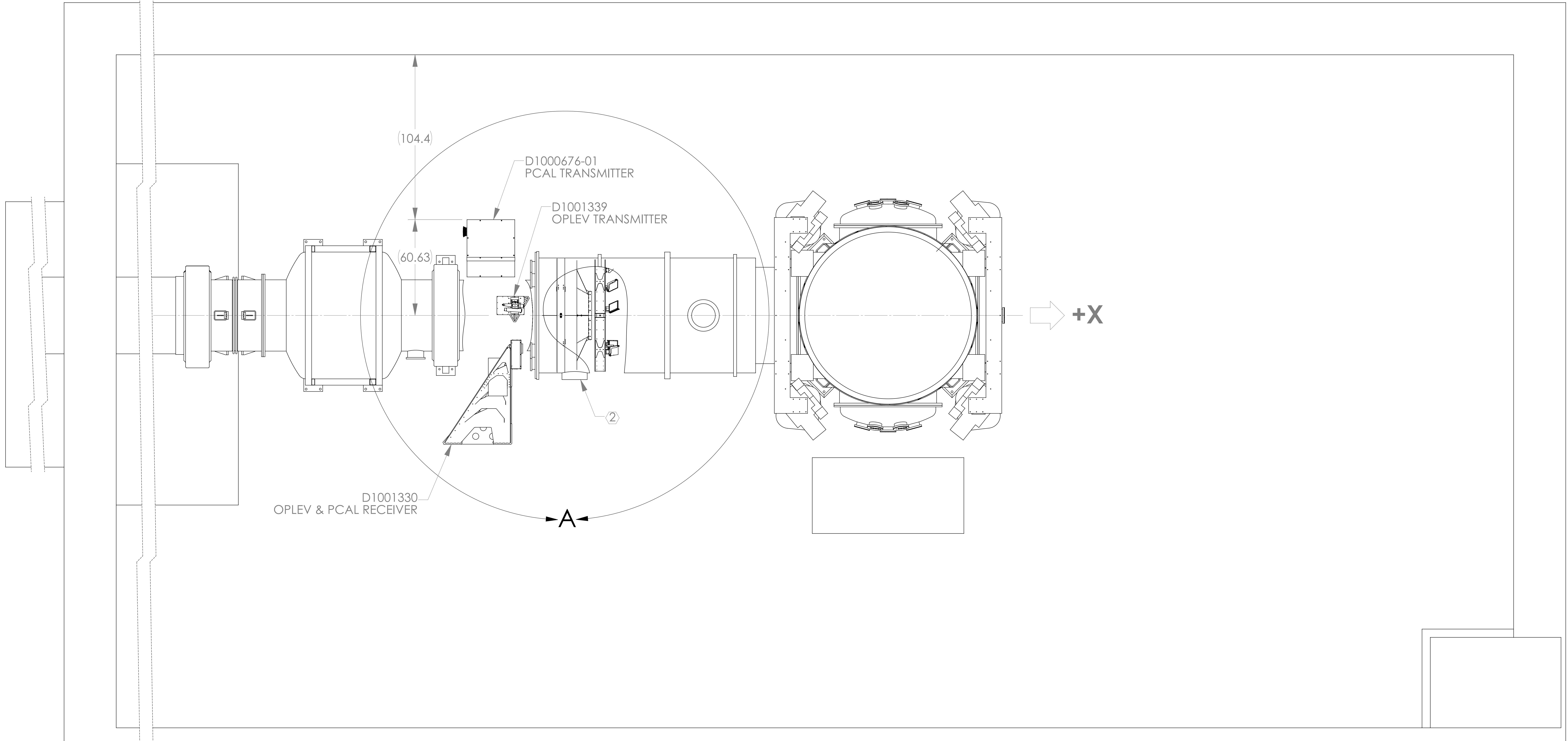


REV.	DATE	DCN #	BOM #
v3	10 MAY 2013	E1300418-x0	-
-	-	-	-
-	-	-	-

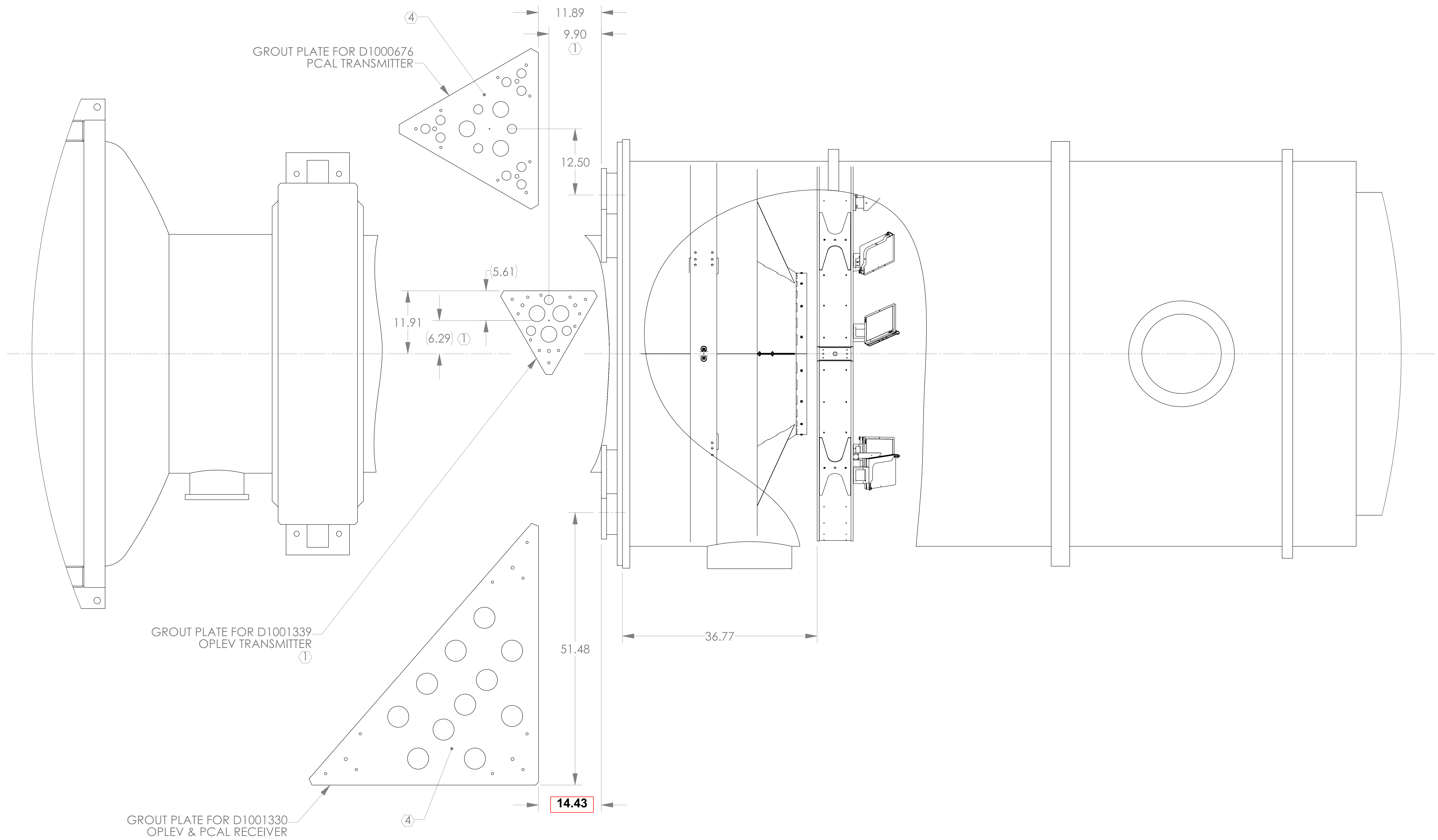


- NOTES:**
- ① NOTED GROUT PLATE INSTALLATION MAY BE ROTATED 180° ABOUT ITS CENTER HOLE IF PREFERABLE. ANCHOR PATTERN MUST BE ROTATED ACCORDINGLY.
 - ② TURBO PUMP AT THE NOTED VACUUM PORT MUST BE ORIENTED APPROPRIATELY TO PROVIDE CLEARANCE FOR THE INSTALLED D1001330 OPLEV & PCAL RECEIVER.
 - ③ THE MEASURED HEIGHT FROM THE A-1 ADAPTER HORIZONTAL MIDPLANE VIEW PORT TO THE VEA FLOOR IS 72.50.
 - ④ PCAL GROUT PLATES TO BE LEVEL WITHIN .06" OVER ENTIRE SURFACE.

DIMENSIONS ARE IN INCHES		NOTES AND TOLERANCES: (UNLESS OTHERWISE SPECIFIED)		CALIFORNIA INSTITUTE OF TECHNOLOGY MASSACHUSETTS INSTITUTE OF TECHNOLOGY		PART NAME	
TOLERANCES:		1. INTERPRET DRAWING PER ASME Y14.5-1994.		SYSTEM		DESIGNER	
.X ± .1		2. REMOVE ALL SHARP EDGES, R.02 MIN.		ADVANCED LIGO		C. CONLEY	
.XX ± .05		3. DO NOT SCALE FROM DRAWING.		SUB-SYSTEM		DATE	
ANGULAR ± °		4. ALL MACHINING FLUIDS MUST BE FULLY SYNTHETIC, FULLY WATER SOLUBLE, AND FREE OF SULFUR, SILICONE, AND CHLORINE.		AOS		10 NOV 2012	
		MATERIAL		NEXT ASSY		CHECKER	
		--				SEE DCN	
		FINISH				APPROVAL	
		-- μinch				SEE DCN	
						SCALE: NONE PROJECTION: SHEET 1 OF 3	

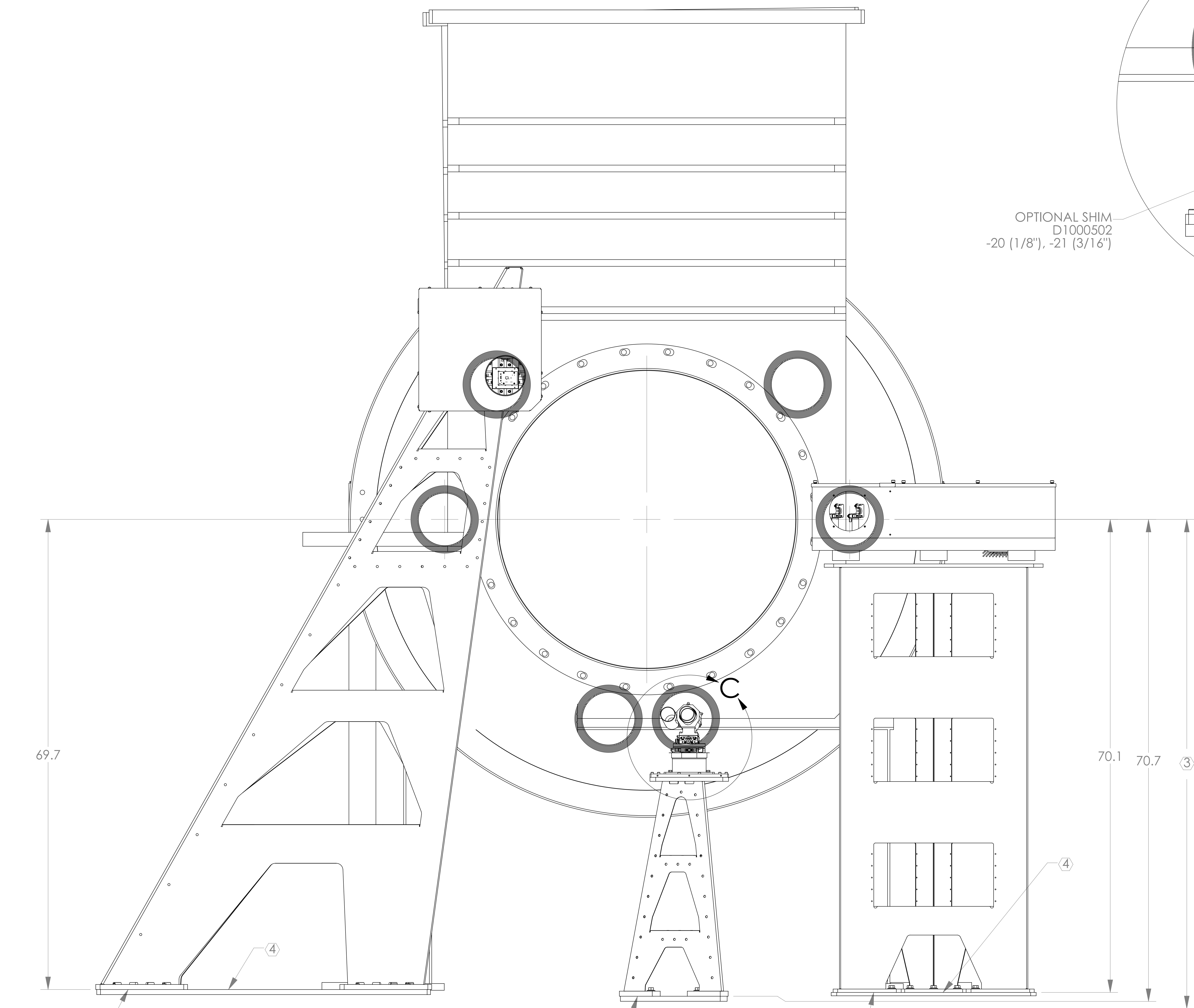
Floor Occupancy, OpLev & PCal, LLO X-End Station	
G1000701-v3	REV.

D:\2010\G1000701\G1000701-01.dwg, 10/11/2012, 10:00 AM, C:\Program Files\Autodesk\AutoCAD 2010\AutoCAD.exe

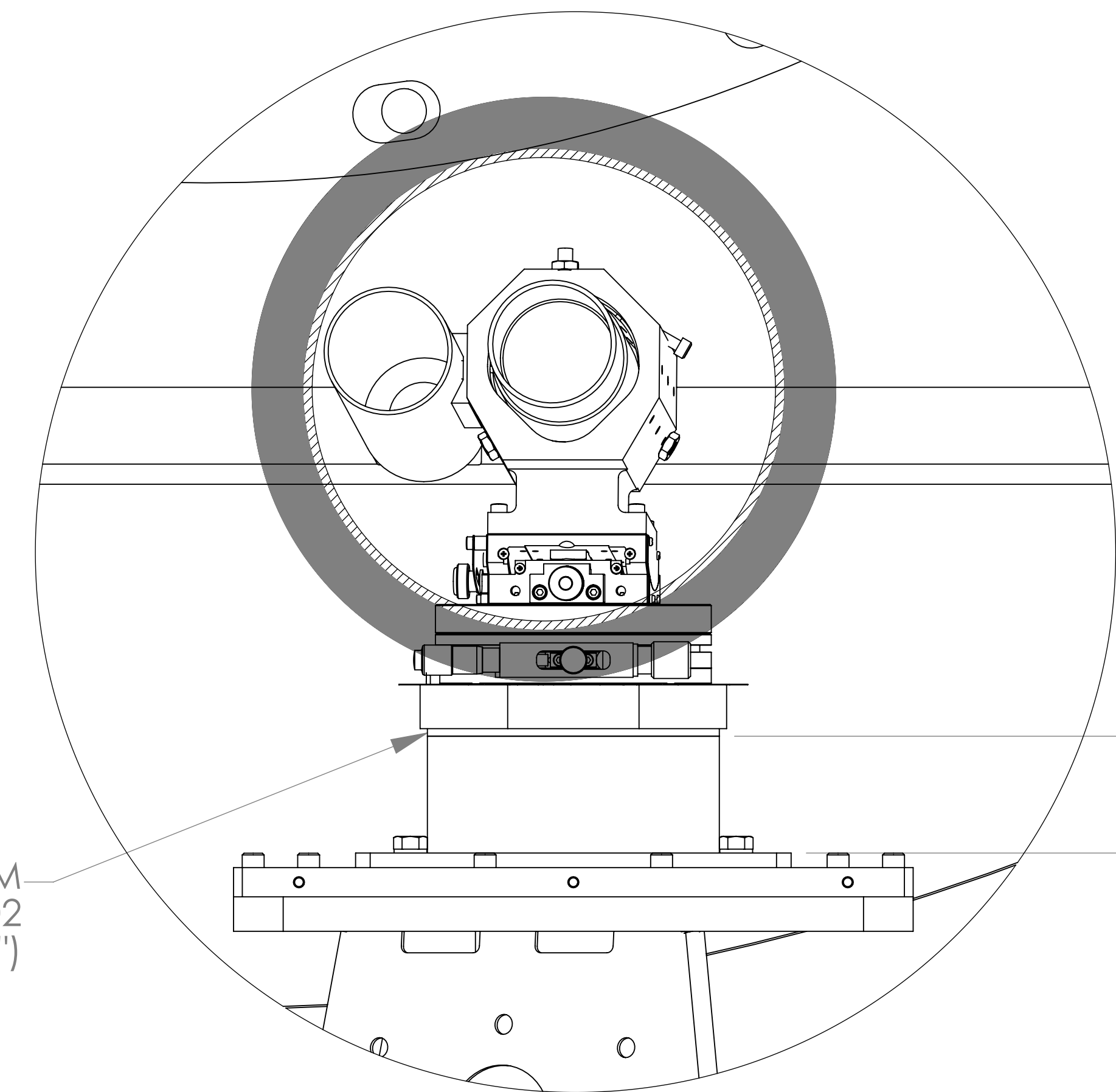


DETAIL A

D:\2016-2020\G1000\ACC-Cover & Feedthrough\img\4-1610\DetailA.dwg, PART FOR REV-A-032, DRAWING FOR REV-A-032



OPTIONAL SHIM
D1000502
-20 (1/8"), -21 (3/16")



2.00
SPACER TUBE
D1000502-12

DETAIL C

SECTION B-B

D1001330
OPLEV & PCAL
RECEIVER

D1001339
OPLEV TRANSMITTER

D1000676-01
PCAL TRANSMITTER