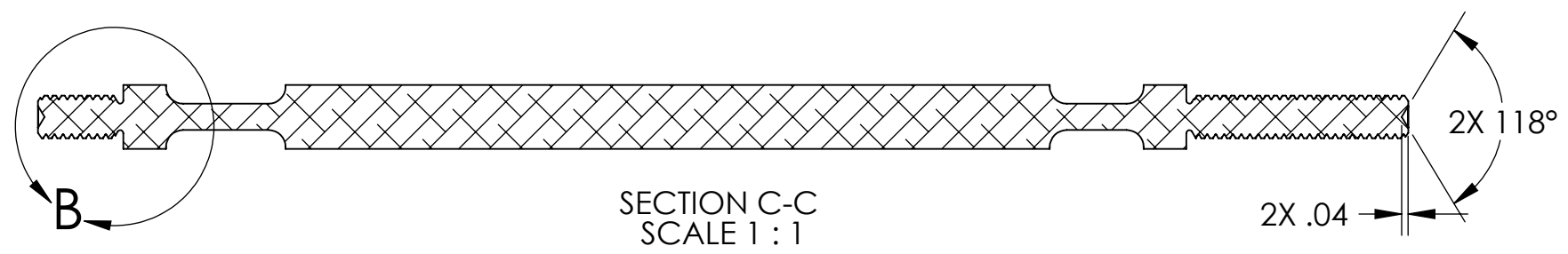
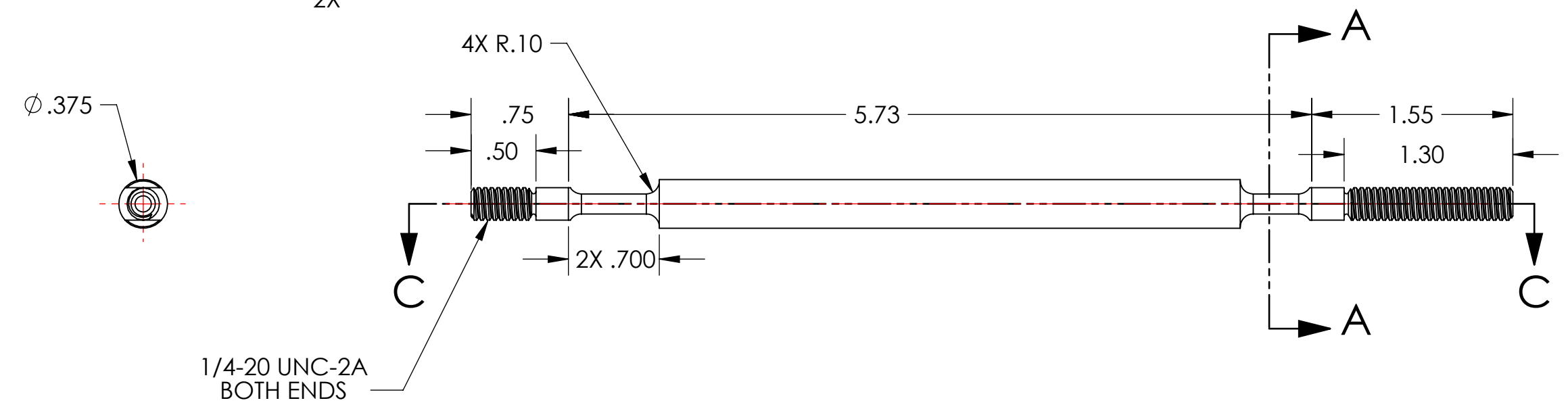
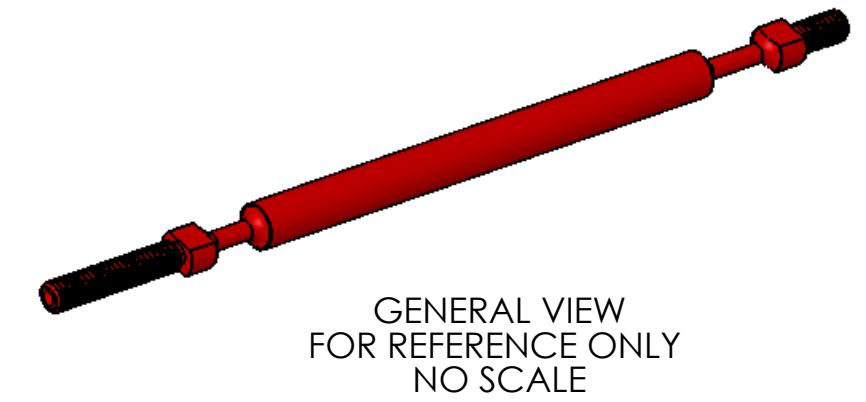
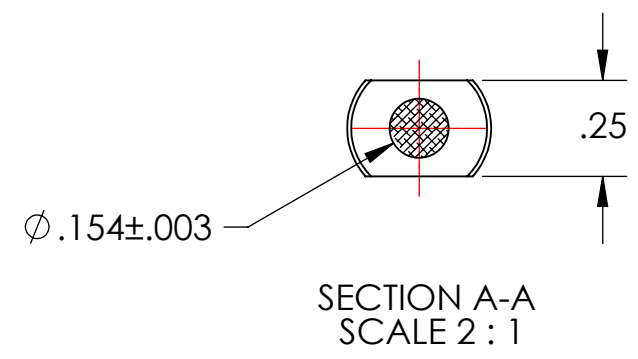
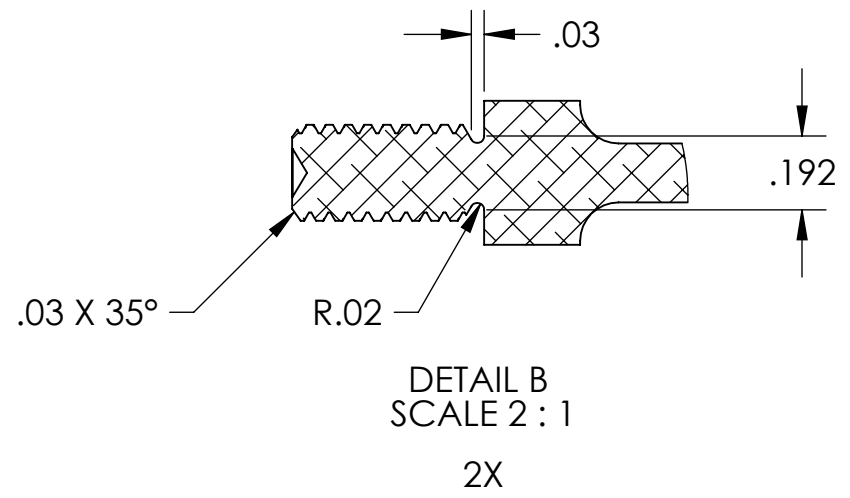


NOTES CONTINUED:
 ⑤ SCRIBE, ENGRAVE, OR MECHANICALLY STAMP (NO DYES OR INKS) A UNIQUE THREE DIGIT SERIAL NUMBER & REVISION NUMBER ON EACH PART. SERIAL NUMBERS START AT 001 FOR THE FIRST ARTICLE AND PROCEED CONSECUTIVELY. BAG AND TAG PARTS WITH THEIR DRAWING PART NUMBER, REVISION, VARIANT OR "TYPE" (IF APPLICABLE), AND QUANTITY. IF PARTS ARE TOO SMALL TO SCRIBE, BAGGING AND TAGGING ALONE IS SUFFICIENT.
 EXAMPLE (PART): 001-v1
 EXAMPLE (TAG): DXXXXXX-VY, TYPE-XX, QTY: TBD

REV.	DATE	DCN #	DRAWING TREE #
v1	5 OCT 2010	E1000185	E1000358
-	-	-	-
-	-	-	-



NOTES AND TOLERANCES: (UNLESS OTHERWISE SPECIFIED)				LIGO CALIFORNIA INSTITUTE OF TECHNOLOGY MASSACHUSETTS INSTITUTE OF TECHNOLOGY		PART NAME	
DIMENSIONS ARE IN INCHES TOLERANCES: .XX ± .01 .XXX ± .005 ANGULAR ± 0.5°				1. INTERPRET DRAWING PER ASME Y14.5-1994. 2. REMOVE ALL SHARP EDGES, R.02 MIN. 3. DO NOT SCALE FROM DRAWING. 4. ALL MACHINING FLUIDS MUST BE FULLY SYNTHETIC, FULLY WATER SOLUBLE AND FREE OF SULFUR, SILICONE, AND CHLORINE.		SUSPENSION ROD	
MATERIAL 304, 316 OR 302 SSSL		FINISH 63 μinch		SYSTEM ADVANCED LIGO		SUB-SYSTEM AOS	
NEXT ASSY D0902617				DESIGNER TQ. NGUYEN		DATE 02 AUG 2010	
DRAFTED BY TQ. NGUYEN				CHECKER M. SMITH		SIZE DWG. NO. B D1001970	
APPROVAL D. COYNE				REV. v1		SHEET 1 OF 1	

D1001970_dLIGO_AOS_Manifold Cryo Baffle Suspension Rod, PART PDM REV: X-013, DRAWING PDM REV: X-010