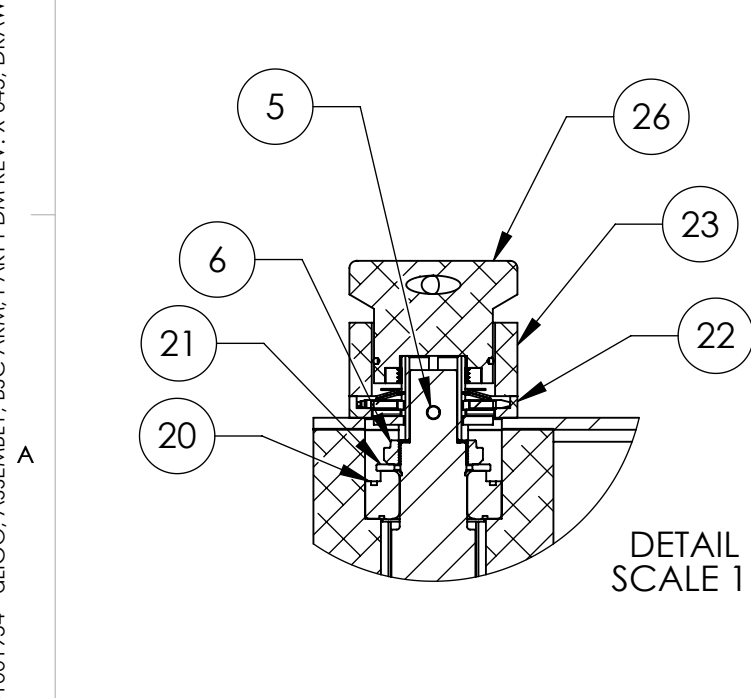
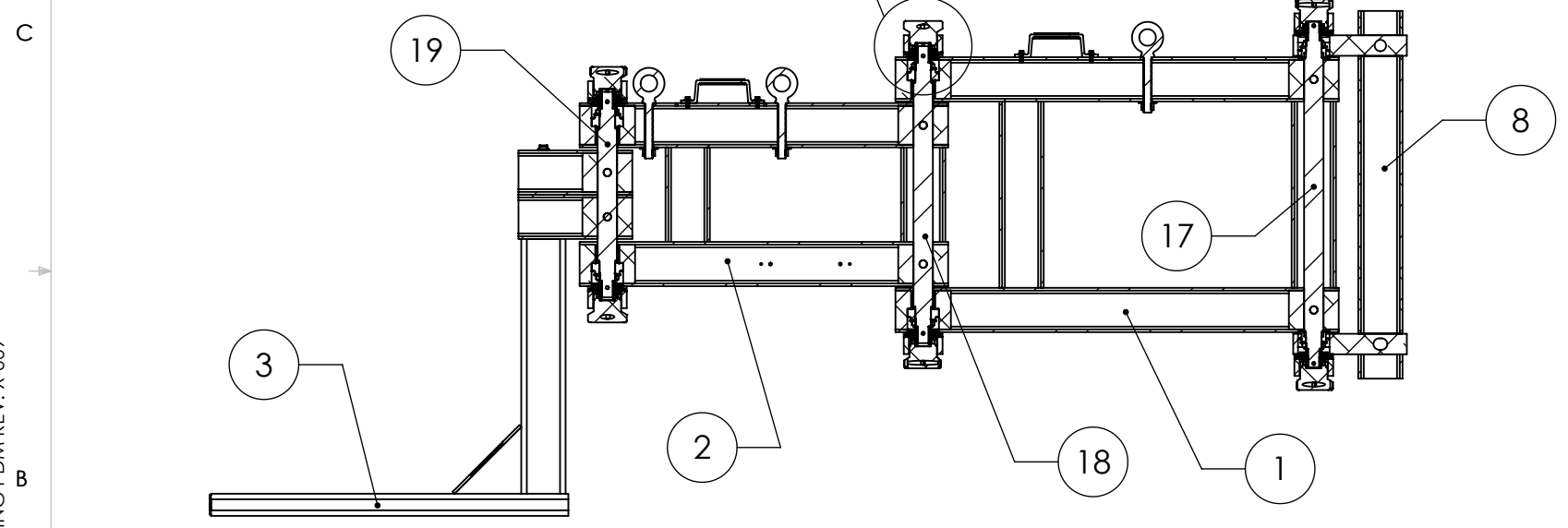
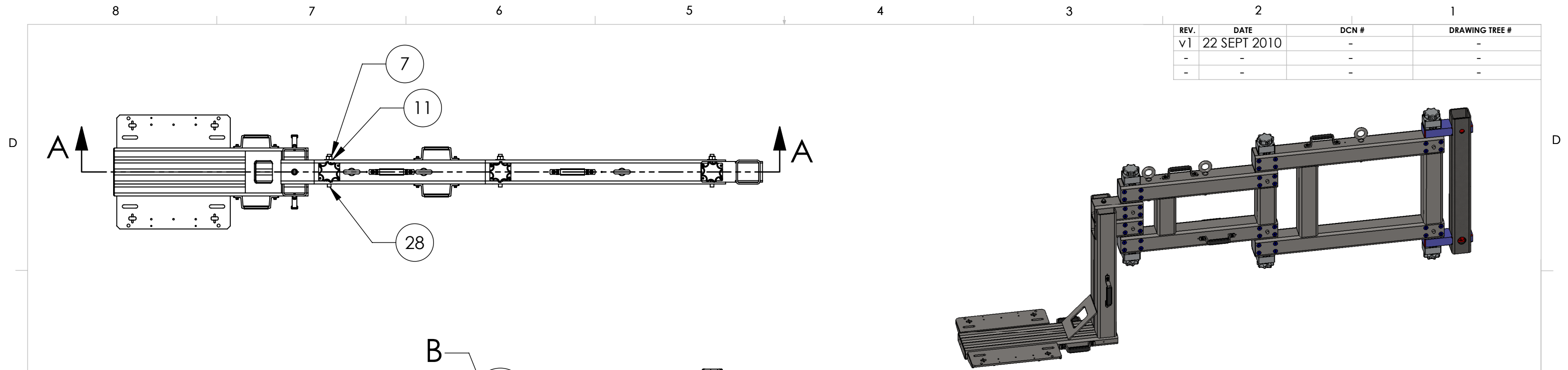


D1001954 - aLIGO, ASSEMBLY, BSC ARM, PART PDM REV: X-045, DRAWING PDM REV: X-009

REV.	DATE	DCN #	DRAWING TREE #
v1	22 SEPT 2010	-	-
-	-	-	-
-	-	-	-



ITEM NO.	PART NUMBER	DESCRIPTION	MATERIAL	QTY
29	McMASTER 6525K121	MODIFIED, SPROCKET, #35 CHAIN, 25 TEETH, 2-1/2" OD	Alloy Steel	6
28	McMASTER 92284A520	Taper Pin, Removable, No.10 x 4-1/2" L	AISI 316 Annealed Stainless Steel Bar (SS)	6
27	McMASTER 1973A1	Handle, Rubber Covered Steel	Alloy Steel	8
26	D1002139	aLIGO, BSC ARM, ASSEMBLY, BRAKE HANDLE	N/A	6
25	D1002354	aLIGO, TORQUE LIMITER, DOUBLE SPRING, MOD	N/A	6
24	McMASTER 3329A31	Bull's-Eye Level, Magnetic, 1" Dia	Alloy Steel	1
23	D1002137	aLIGO, BSC ARM, HOUSING, TORQUE LIMITER	6061 Alloy	6
22	D1002138	aLIGO, BSC ARM, HOUSING, SPROCKET	6061 Alloy	6
21	McMASTER 97063A146	Washer, 1-5/8" ID, 2-3/8" OD, 0.134" Thick	Alloy Steel	6
20	TIMKEN - HM88648	ROLLER BEARING, TAPER	Alloy Steel	6
19	D1001848-3	aLIGO, BSC ARM, CONNECTOR SHAFT	Plain Carbon Steel	1
18	D1001848-2	aLIGO, BSC ARM, CONNECTOR SHAFT, MEDIUM	Plain Carbon Steel	1
17	D1001848-1	aLIGO, BSC ARM, CONNECTOR SHAFT	Plain Carbon Steel	1
29	McMASTER 91845A330	Hex Nut, 3/4"-10	Alloy Steel	3
15	9	Washer, For 3/4" Screw, 1-5/8" OD, 0.15 Thick	Material <not specified>	3
14	McMASTER 3014T924	Lifting Eyebolt, 3/4"-10 x 5" L	Alloy Steel	3
13	McMASTER 91375A575	Set Screw, 5/16"-18 X 5/16" L	Alloy Steel	24
12	McMASTER 98023A029	Washer, For 1/4" Screw (9/32" ID), 5/8" OD	Material <not specified>	16
11	McMASTER 92141A035	Washer, For 5/8" Screw (11/16" ID), 1-1/2" OD	AISI 316 Stainless Steel Sheet (SS)	6
10	McMASTER 91251A551	SHCS, 1/4"-20 X 2-1/4" L	Alloy Steel	12
9	McMASTER 96006A706	SHCS, 1/4"-20 X 3/4" L	Alloy Steel	16
8	McMASTER 91251A538	SHCS, 1/4"-20 X 9/16" L	Alloy Steel	12
7	McMASTER 90499A835	Hex Nut, 5/8"-18	Material <not specified>	6
6	McMASTER 6343K79	Bearing Locknut, 1.376"-18, 2-1/16" OD, 1/2" W	Material <not specified>	6
5	McMASTER 92390A162	CLEVIS PIN, 1/4" DIA, 1-3/8" LONG, 1-15/64" USABLE LENGTH	Alloy Steel	6
8	D1001897	ALIGO, BSC ARM, FLANGE MOUNT	N/A	1
3	D1001898	aLIGO, BSC ARM, FIXTURE ARM	--	1
2	D1001736	aLIGO, ASSEMBLY, BSC ARM, SECONDARY	SEE PARTS LIST	1
1	D1001735	aLIGO, ASSEMBLY, BSC ARM, PRIMARY	--	1

NOTES AND TOLERANCES: (UNLESS OTHERWISE SPECIFIED)

- INTERPRET DRAWING PER ASME Y14.5-1994.
- REMOVE ALL SHARP EDGES, R.02 MIN.
- DO NOT SCALE FROM DRAWING.
- ALL MACHINING FLUIDS MUST BE FULLY SYNTHETIC, FULLY WATER SOLUBLE AND FREE OF SULFUR, SILICONE, AND CHLORINE.

DIMENSIONS ARE IN INCHES
 TOLERANCES:
 .XX ± N/A
 .XXX ± N/A
 ANGULAR ± N/A°

MATERIAL N/A **FINISH** N/A μinch

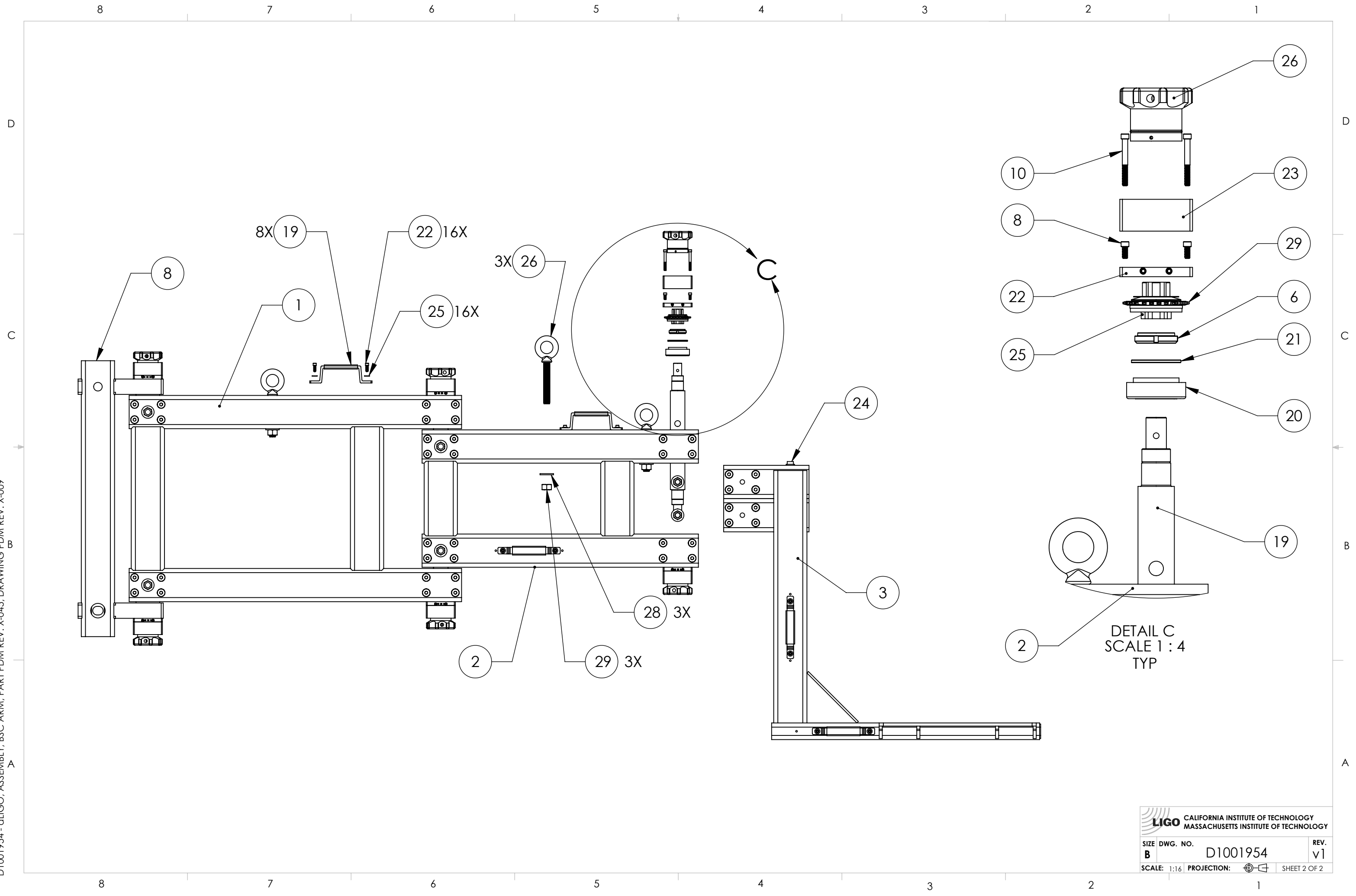
ADVANCED LIGO **SUB-SYSTEM** SYS **NEXT ASSY** D1001730


CALIFORNIA INSTITUTE OF TECHNOLOGY
MASSACHUSETTS INSTITUTE OF TECHNOLOGY

PART NAME aLIGO, ASSEMBLY, BSC ARM

DESIGNER	J. DAVIS	15 AUG 2010	SIZE	DWG. NO.	REV.
DRAFTER	J. DAVIS	23 AUG 2010	B	D1001954	v1
CHECKER	S. SHANKLE	23 SEPT 2010	SCALE:	1:16	PROJECTION:
APPROVAL					SHEET 1 OF 2

D1001954 - aLIGO, ASSEMBLY, BSC ARM, PART PDM REV: X-045, DRAWING PDM REV: X-009



 CALIFORNIA INSTITUTE OF TECHNOLOGY
 MASSACHUSETTS INSTITUTE OF TECHNOLOGY

SIZE	DWG. NO.	REV.
B	D1001954	v1
SCALE: 1:16 PROJECTION:		SHEET 2 OF 2