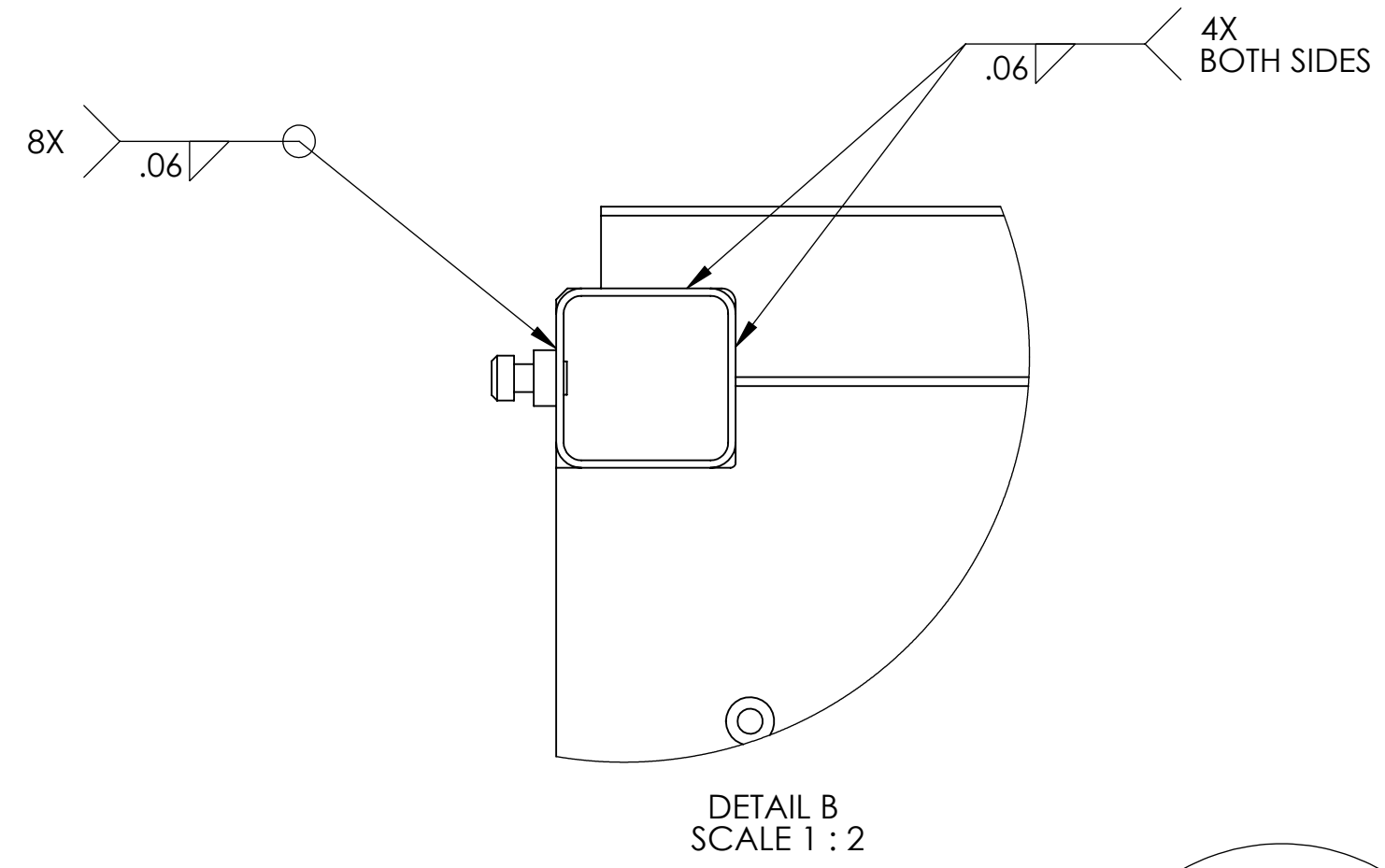
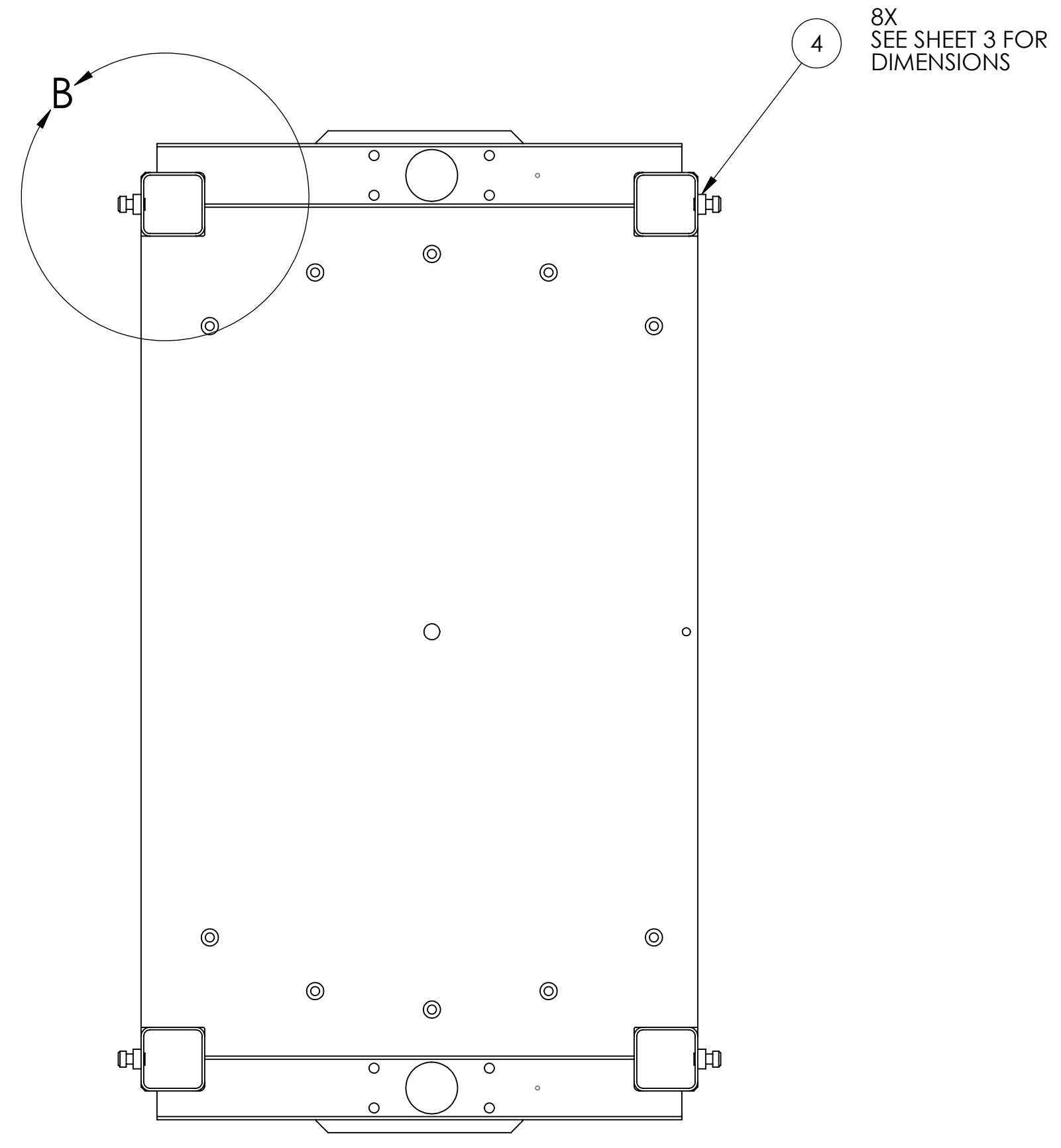
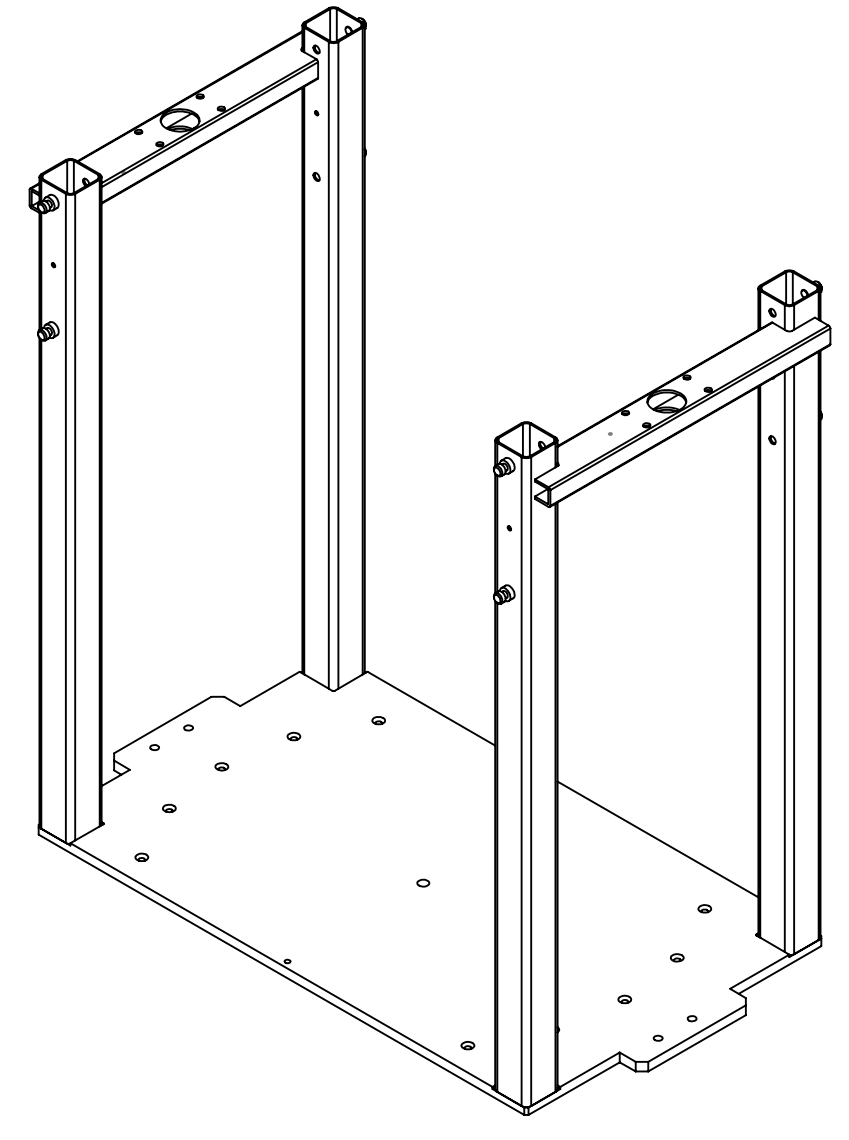
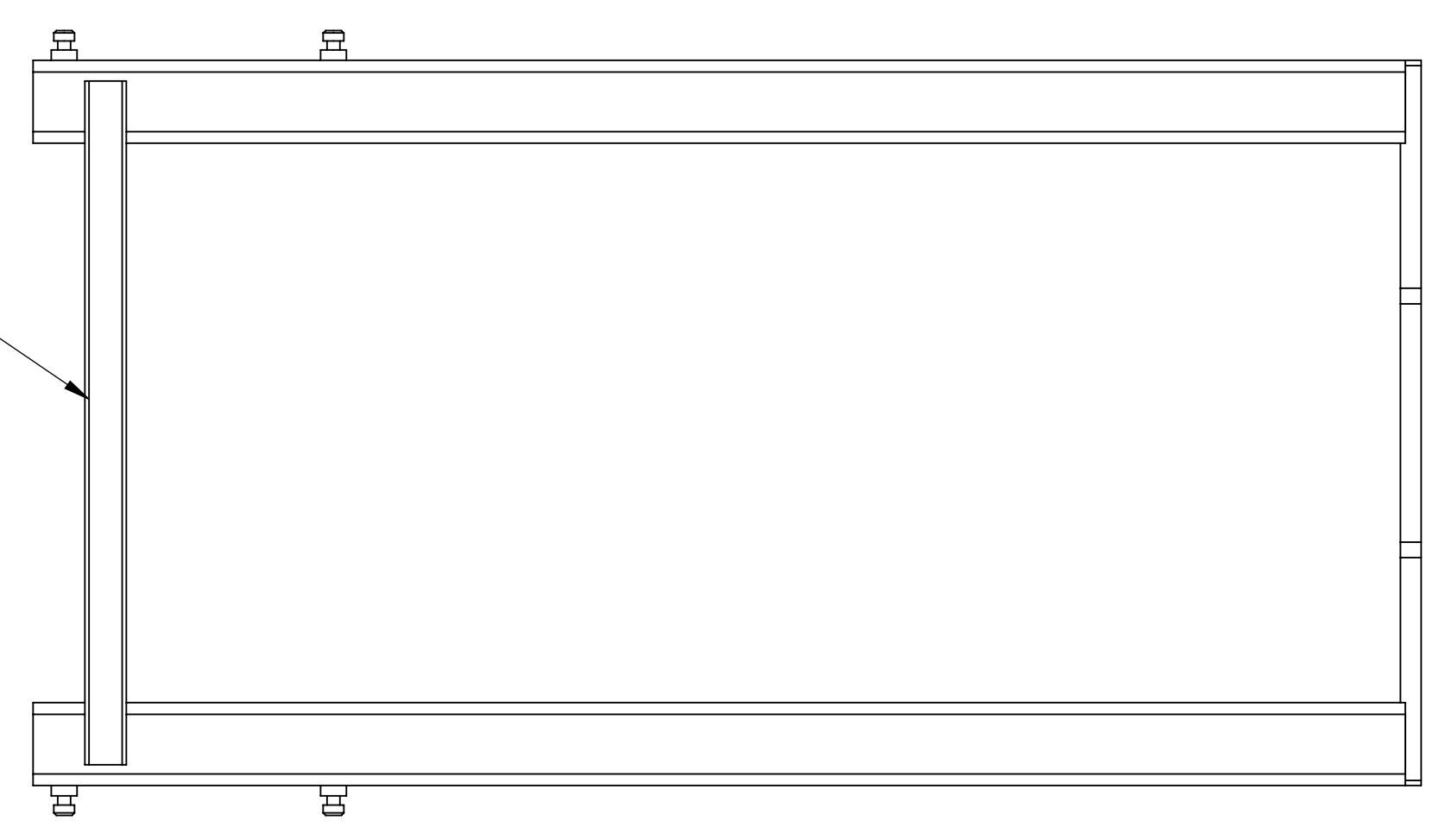


**NOTES CONTINUED:**  
 5. SCRIBE, ENGRAVE, OR MECHANICALLY STAMP (NO INKS OR DYES) DRAWING PART NUMBER, REVISION (AND VARIANT OR TYPE IF APPLICABLE) ON NOTED SURFACE OF PART FOLLOWED ON THE NEXT LINE WITH A THREE DIGIT SERIAL NUMBER. SERIAL NUMBERS START AT 001 FOR THE FIRST ARTICLE AND PROCEED CONSECUTIVELY. USE MINIMUM 0.12" HIGH CHARACTERS, UNLESS THE SIZE OF THE PART DICTATES SMALLER CHARACTERS. A VIBRATORY TOOL MAY BE USED. EXAMPLE: DXXXXXX-VY, TYPE-XX, S/N XXX  
 6. ALL PARTS SHALL BE MANUFACTURED IN ACCORDANCE WITH LIGO SPECIFICATION E0900364.  
 7. ASSEMBLY SHALL BE WELDED IN ACCORDANCE WITH LIGO SPECIFICATION E0900048.

REV.	DATE	DCN #	DRAWING TREE #
V1	30 JUL 2010	E1100586	



2X  
SEE SHEET 3 FOR DIMENSIONS

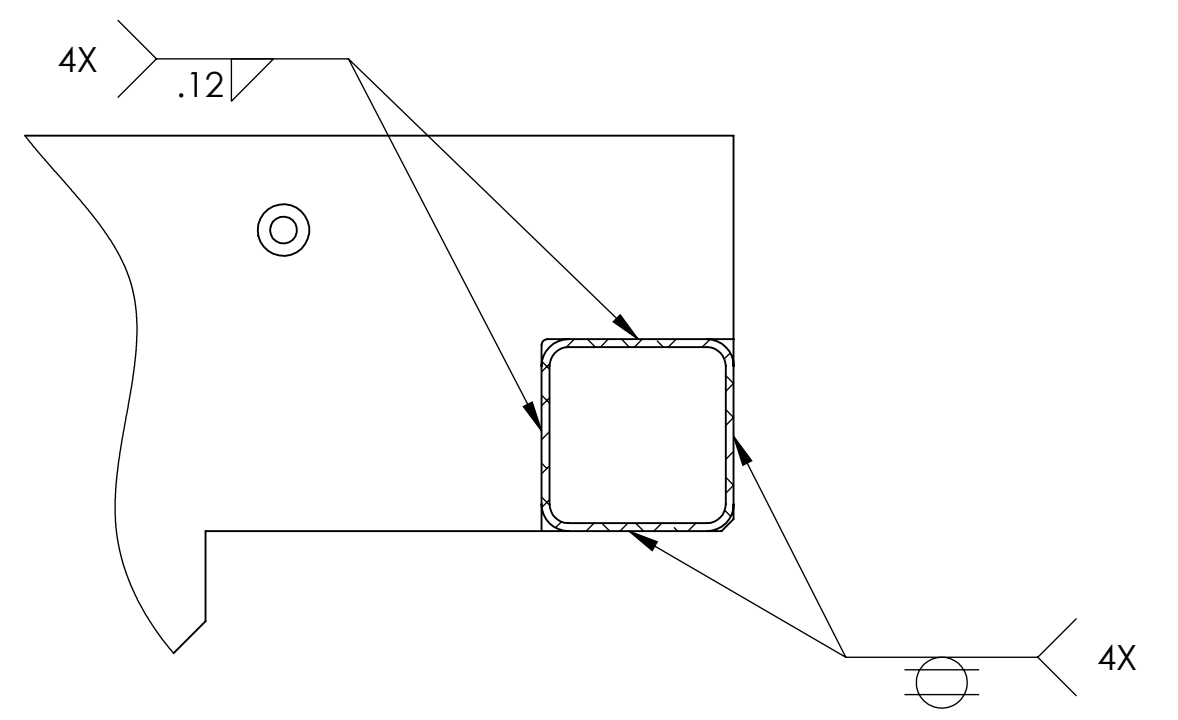
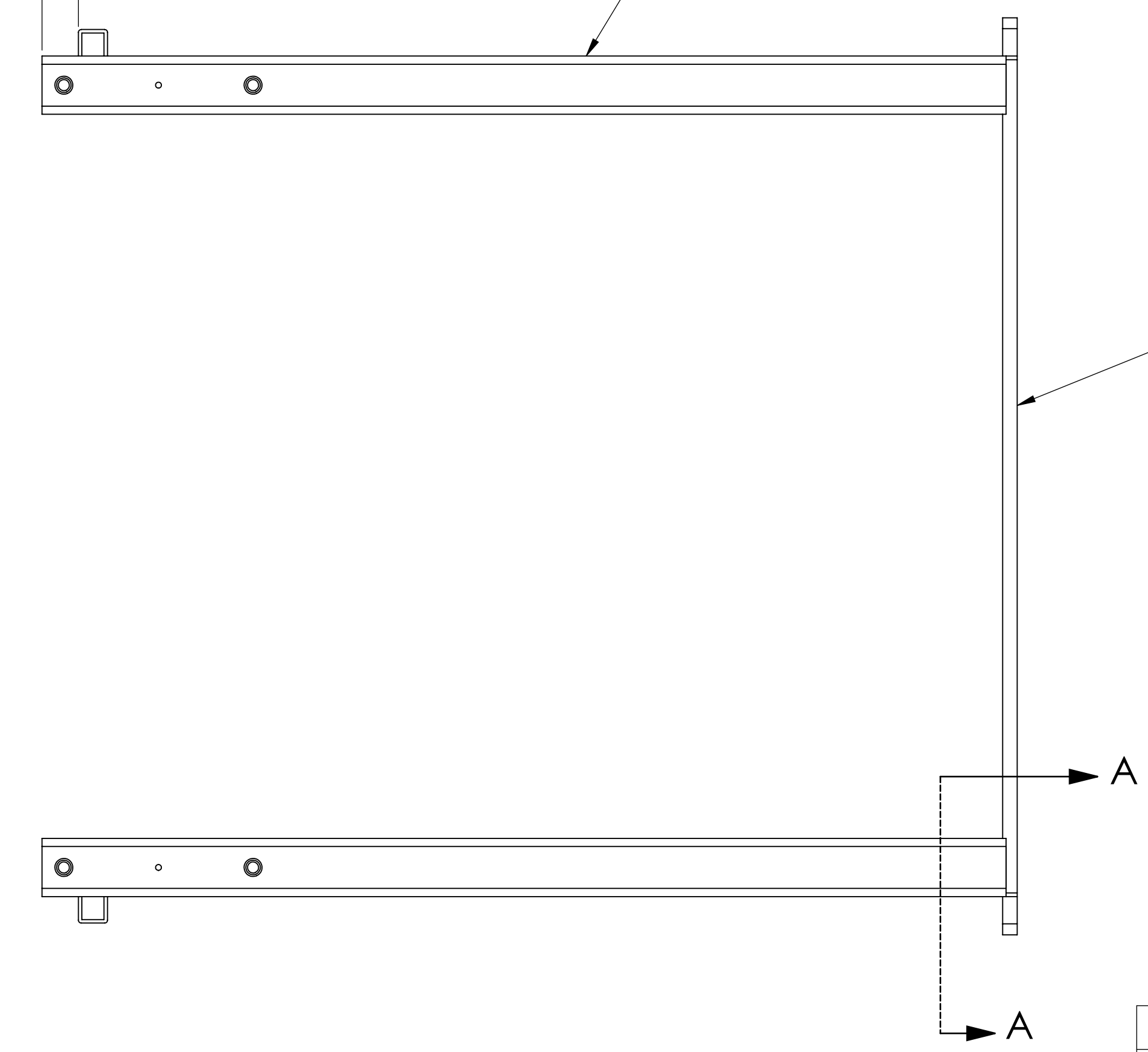


8X  
SEE SHEET 3 FOR DIMENSIONS



4X  
SEE SHEET 3 FOR DIMENSIONS

1  
SEE SHEET 2 FOR DIMENSIONS



ITEM NO.	PART NUMBER	DESCRIPTION	MATERIAL	REQ	SPARE	TOTAL
4	HANGER	LONG SIDE BRACE HANGER	304 SSSL	8		8
3	SHORT SIDE BRACE	SHORT SIDE BRACE, LIFT ASSEMBLY	304 SSSL	2		2
2	VERTICLE TUBE	VERTICLE TUBE, LIFT ASSEMBLY	304 SSSL	4		4
1	LIFT BASE PLATE	BASE PLATE, , LIFT ASSEMBLY	304 SSSL	1		1

NOTES AND TOLERANCES: (UNLESS OTHERWISE SPECIFIED)	
DIMENSIONS ARE IN INCHES	
TOLERANCES: .XX ± .01 .XXX ± .005	
ANGULAR ± 0.5°	
MATERIAL	FINISH
N/A	N/A μinch

**LIGO** CALIFORNIA INSTITUTE OF TECHNOLOGY  
 MASSACHUSETTS INSTITUTE OF TECHNOLOGY

SYSTEM: ADVANCED LIGO      SUB-SYSTEM: SUS

NEXT ASSY:

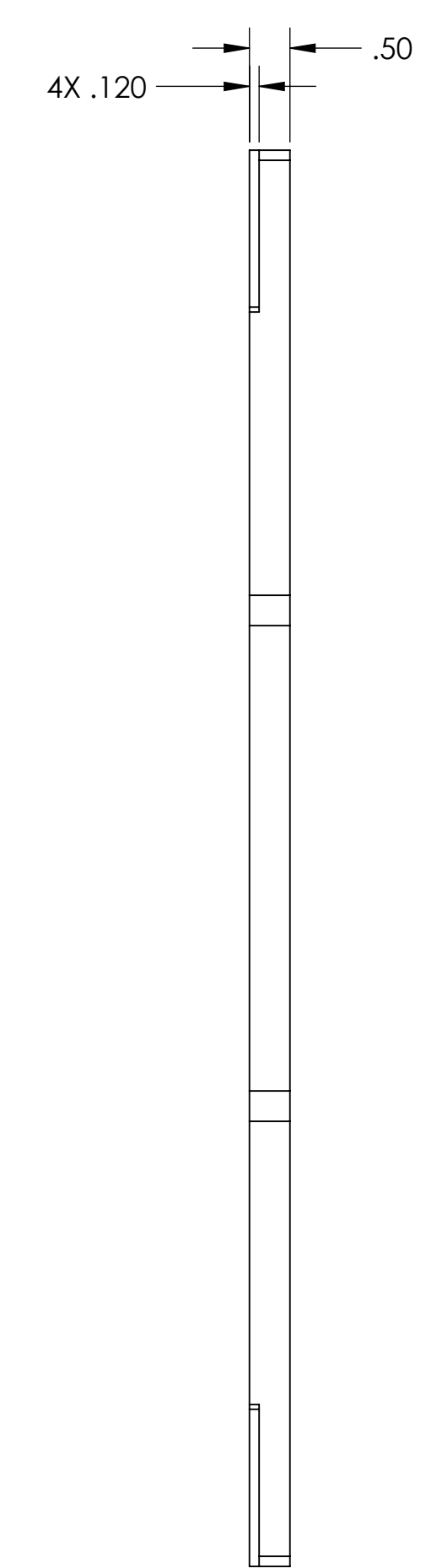
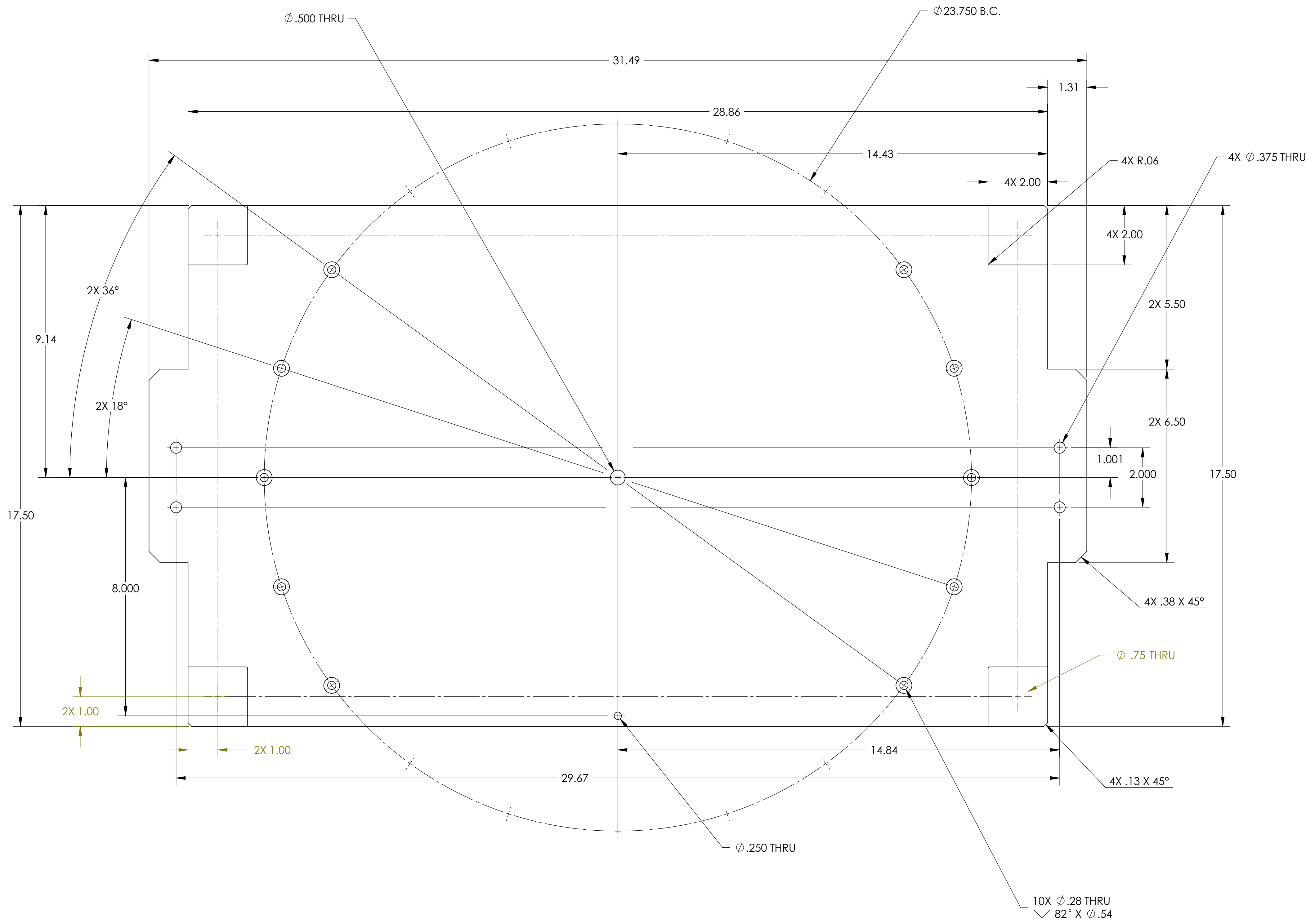
PART NAME: **LIFT BASE ASSEMBLY WELDMENT**

DESIGNER	K. BUCKLAND	30 JUL 2010	SIZE	DWG. NO.	REV.
DRAFTER	K. BUCKLAND	30 JUL 2010	D	D1001949	v1
CHECKER			SCALE: 1:4	PROJECTION:	SHEET 1 OF 3
APPROVAL					

D:\001949\LIFT BASE ASSEMBLY\WELDMENT.dwg, SUS, PART PDM REV: X-004, DRAWING PDM REV: X-002

8 7 6 5 4 3 2 1

H  
G  
F  
E  
D  
C  
B  
A



BASE PLATE  
MATERIAL: 304 SSTL

		CALIFORNIA INSTITUTE OF TECHNOLOGY MASSACHUSETTS INSTITUTE OF TECHNOLOGY	
SIZE	DWG. NO.	REV.	
D	D1001949	v1	
SCALE: 1:2	PROJECTION:	SHEET 2 OF 3	

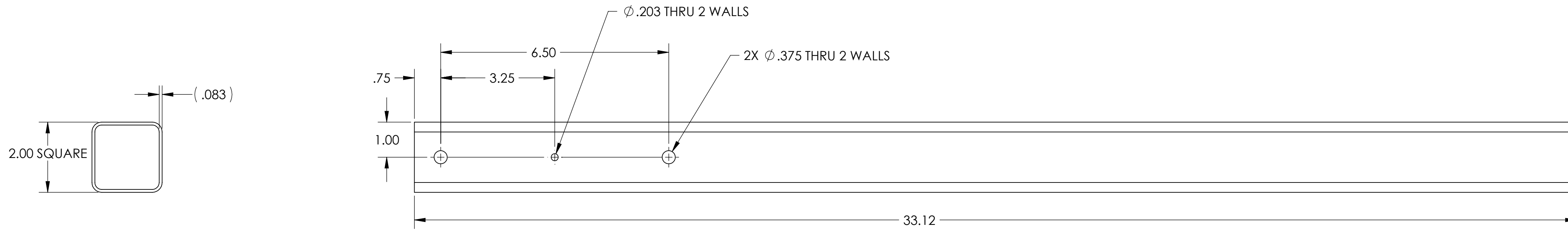
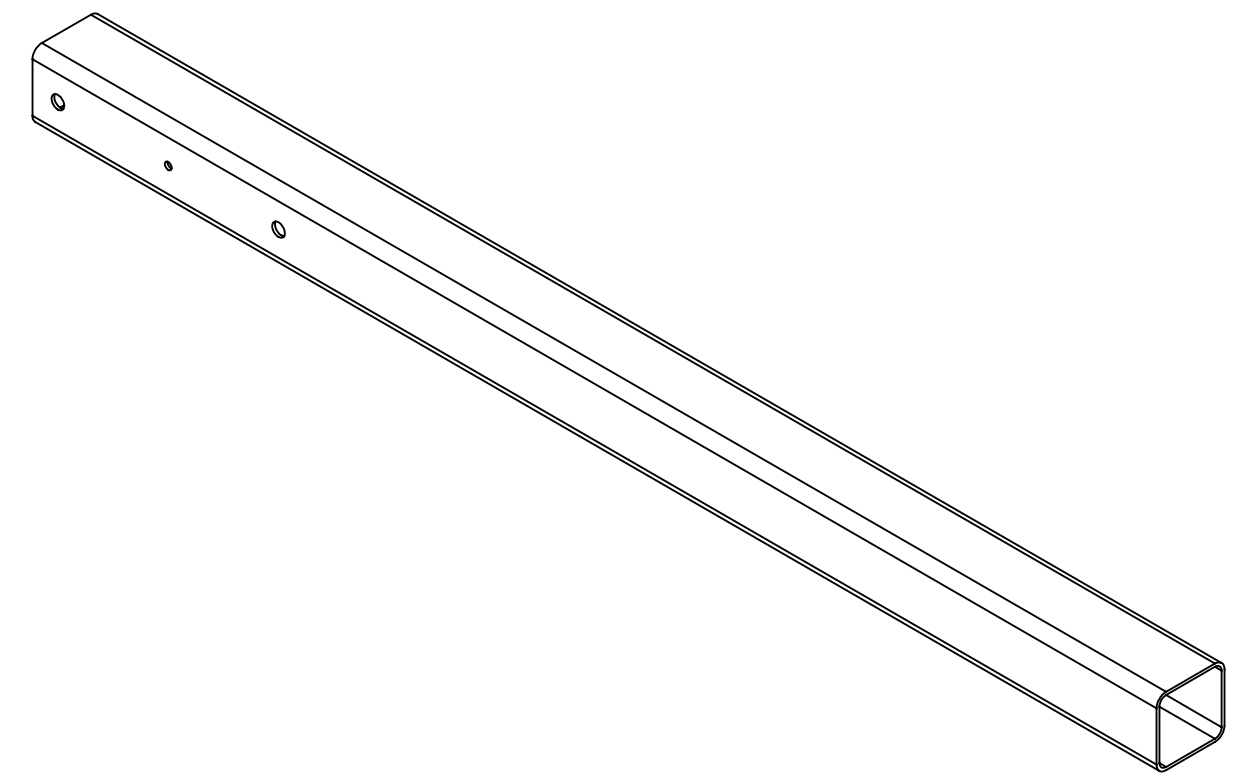
D:\000949\UT BASE ASSEMBLY\WEDMENT.dwg, SUS. PART PDM REV: X-002, DRAWING PDM REV: X-002

8 7 6 5 4 3 2 1

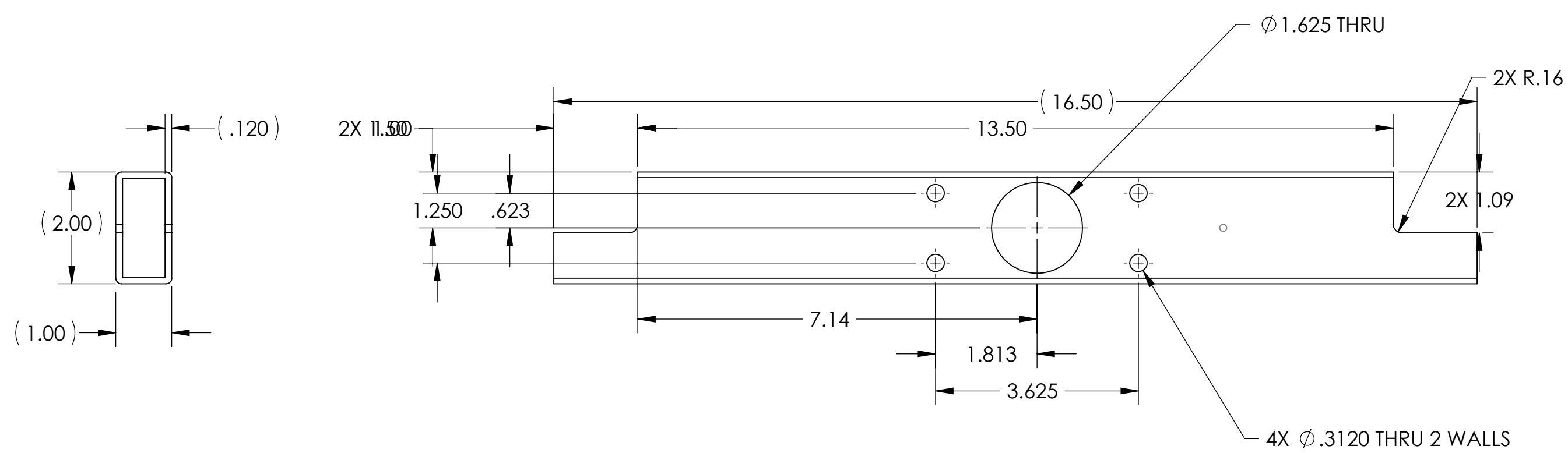
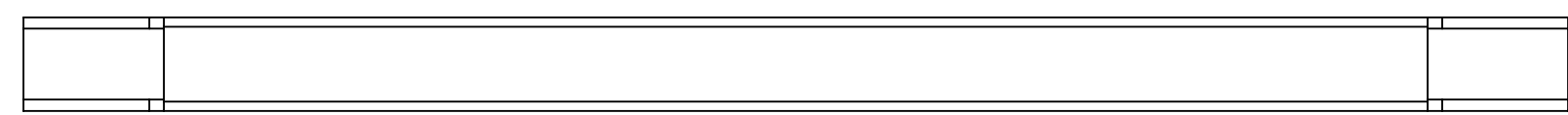
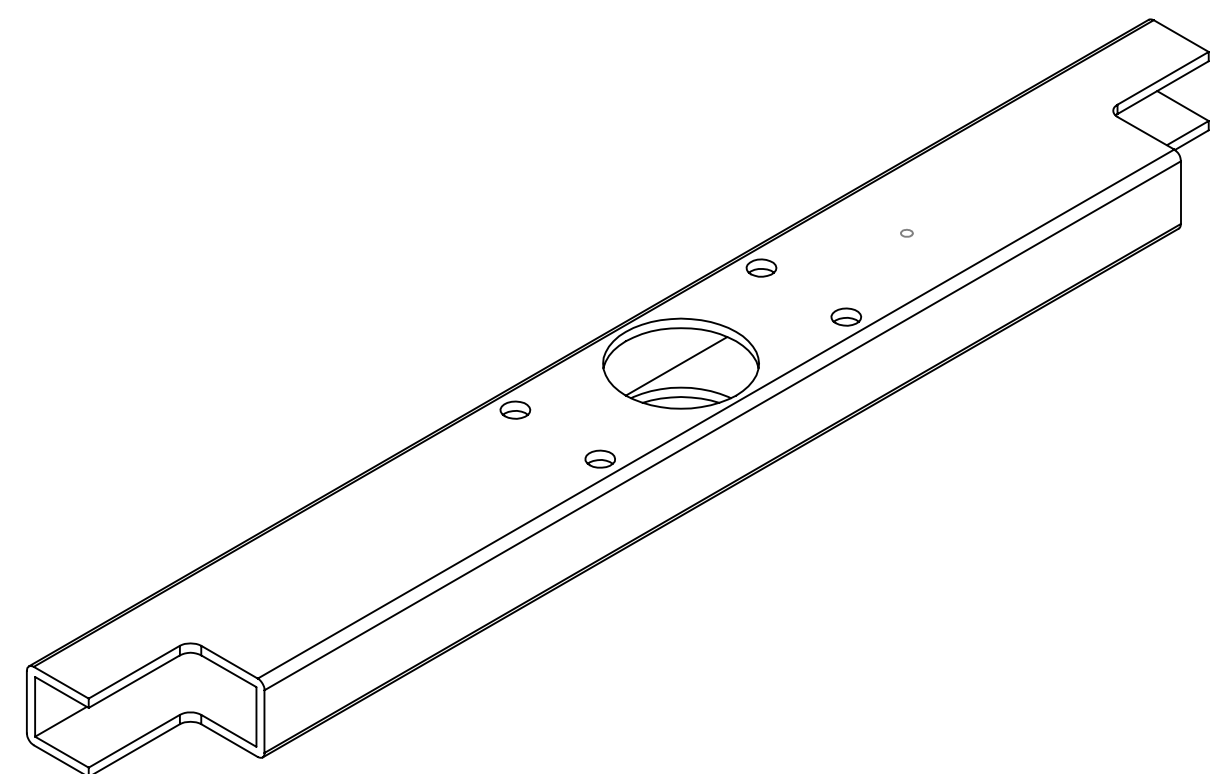
8 7 6 5 4 3 2 1

H  
G  
F  
E  
D  
C  
B  
A

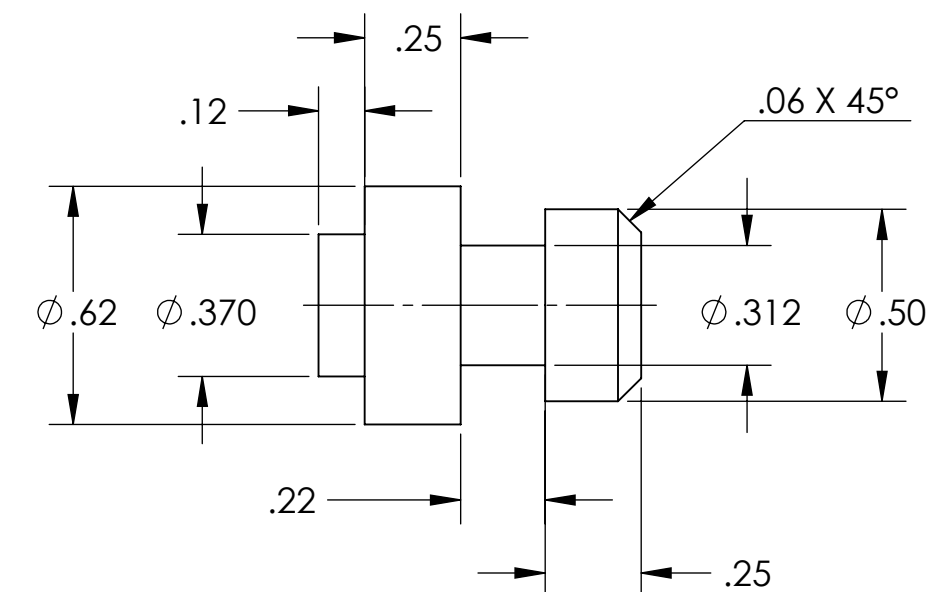
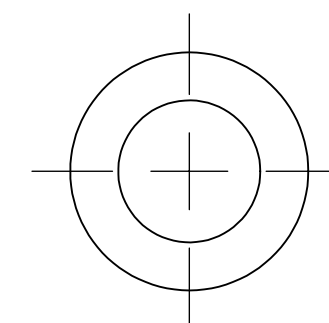
H  
G  
F  
E  
D  
C  
B  
A



VERTICLE TUBE  
MATERIAL: 2"SQ, .083 WALL  
304 SSSL TUBING



SHORT SIDE BRACE  
MATERIAL: 1" X 2", .120 WALL  
304 SSSL TUBING



LONG SIDE BRACE HANGER  
MATERIAL: 304 SSSL

<b>LIGO</b> CALIFORNIA INSTITUTE OF TECHNOLOGY MASSACHUSETTS INSTITUTE OF TECHNOLOGY	
SIZE DWG. NO.	REV.
<b>D</b> <b>D1001949</b>	<b>v1</b>
SCALE: 1:2	PROJECTION:
SHEET 3 OF 3	

8 7 6 5 4 3 2 1

D:\001949\LIF BASE ASSEMBLY\WEDMENT.dwg, SUS PART PDM REV: X-000, DRAWING PDM REV: X-002