

**NOTES CONTINUED:**

⑤ SCRIBE, ENGRAVE (A VIBRATORY TOOL MAY BE USED), LASER MARK OR MECHANICALLY STAMP (NO INKS OR DYES) DRAWING PART NUMBER, REVISION (AND VARIANT OR "TYPE" IF APPLICABLE) ON NOTED SURFACE OF PART FOLLOWED ON THE NEXT LINE WITH A THREE DIGIT SERIAL NUMBER. SERIAL NUMBERS START AT 001 FOR THE FIRST ARTICLE AND PROCEED CONSECUTIVELY. USE MINIMUM 0.12" HIGH CHARACTERS, UNLESS THE SIZE OF THE PART DICTATES SMALLER CHARACTERS. EXAMPLE: DXXXXXX-VY, TYPE-XX, S/N XXX

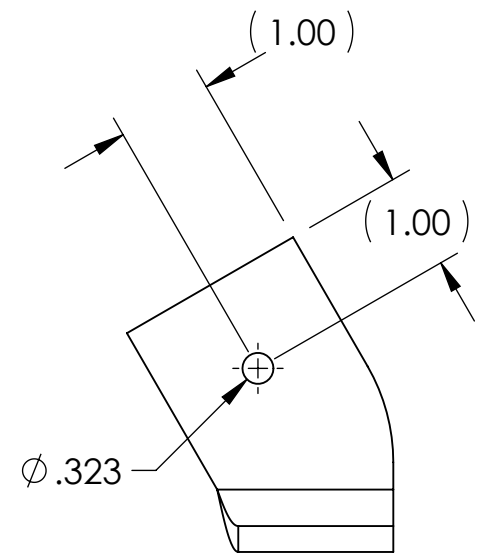
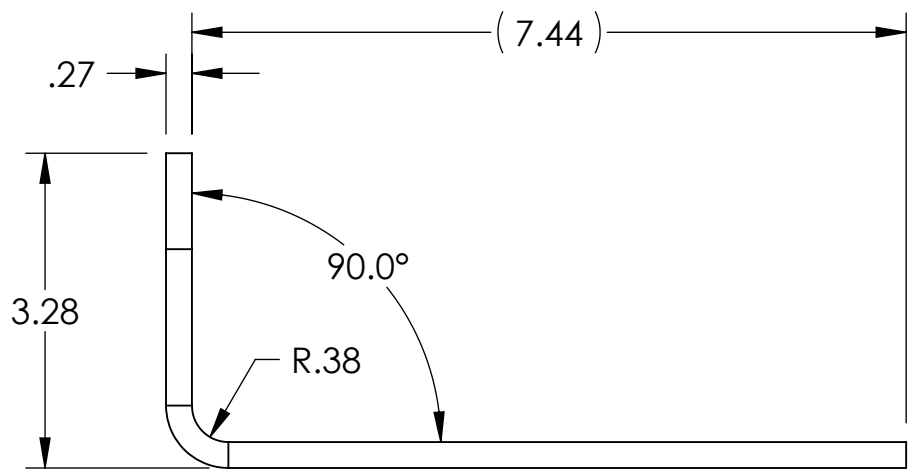
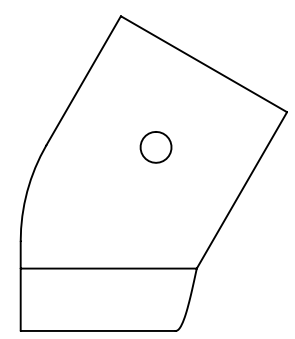
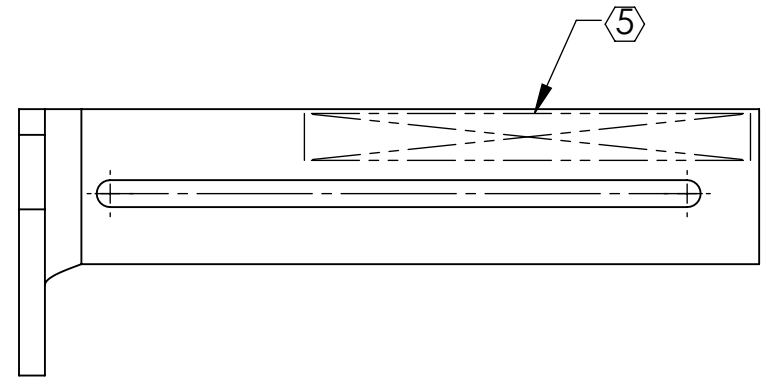
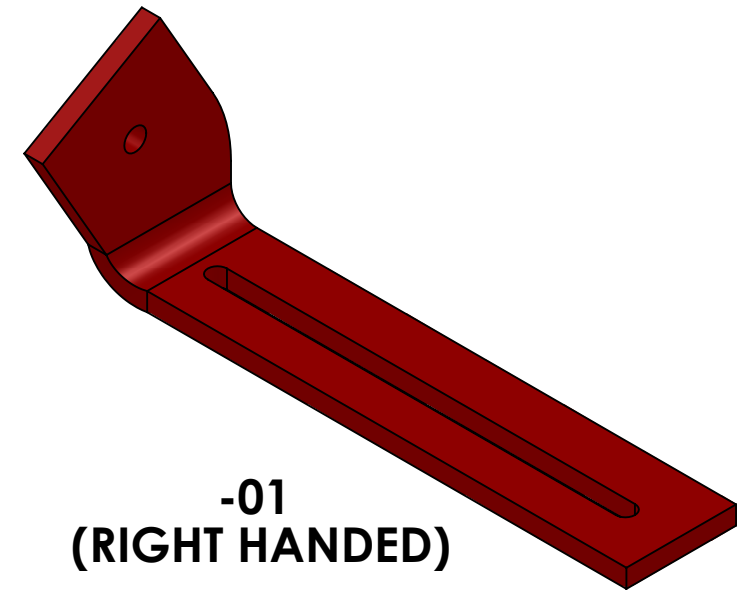
6. APPROXIMATE WEIGHT = 1.21 LB [.55 KG].

⑦ MACHINE ALL SURFACES TO REMOVE OXIDES AND MILL FINISH. USE OF ABRASIVE REMOVAL TECHNIQUES IS NOT ALLOWED.

8. ALL PARTS SHALL BE MANUFACTURED IN ACCORDANCE WITH LIGO SPECIFICATION E0900364.

9. NO REPAIRS SHALL BE MADE UNLESS APPROVED IN ADVANCE, AND IN WRITING, BY LIGO LABORATORY. IN GENERAL WELD REPAIRS AND PRESS FIT INSERT REPAIRS ARE NEVER ACCEPTABLE; THE MATERIAL SHOULD BE MADE WITH VIRGIN MATERIAL. SPECIAL CIRCUMSTANCES CAN BE REVIEWED IF / WHEN BROUGHT TO THE ATTENTION OF LIGO CONTRACTING OFFICER'S REPRESENTATIVE (COTR) THROUGH A MATERIAL REVIEW BOARD (MRB) PROCESS, REFER TO LIGO-E0900364.

REV.	DATE	DCN #	DRAWING TREE #
v1	21 MAR 2011	E1000384	-
v2	07 MAR 2012	E1100351	-
-	-	-	-

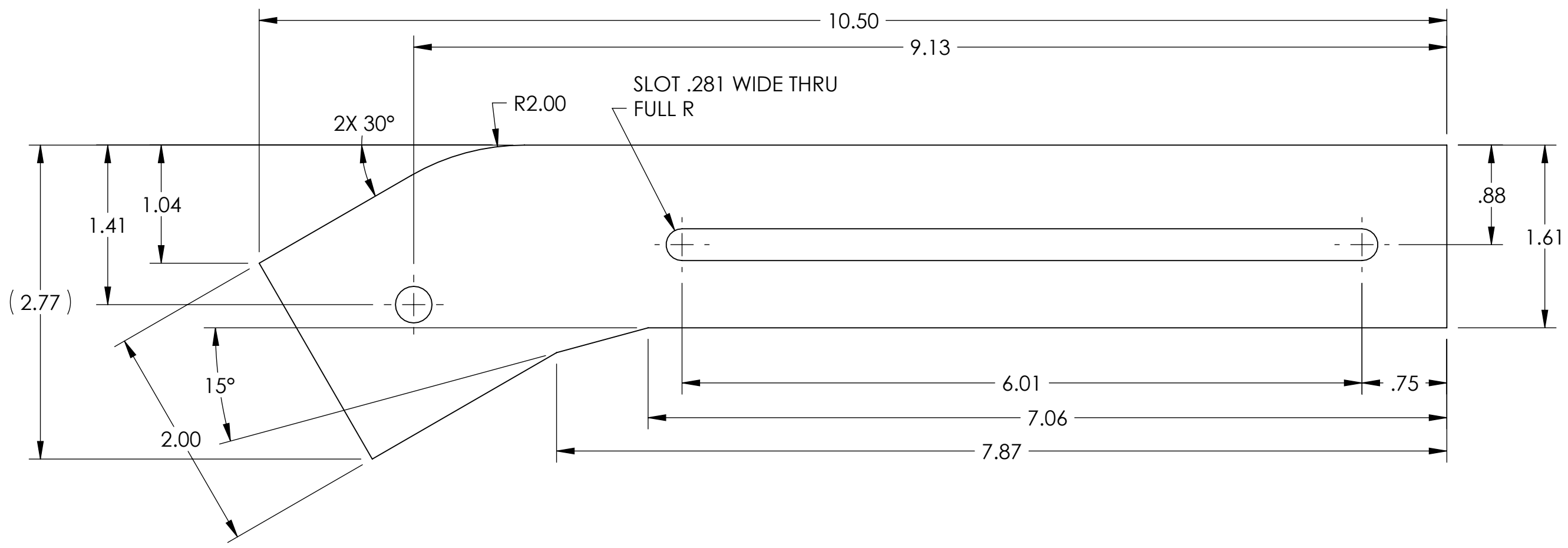


**-01 (RIGHT HANDED) SHOWN DETAILED**  
**-02 (LEFT HANDED) BEND OPPOSITE**


D1001929 aLIGO TMS SEISMIC SAFETY STOP CHAMBER BRACKET, PART PDM REV: X-036, DRAWING PDM REV: X-024

NOTES AND TOLERANCES: (UNLESS OTHERWISE SPECIFIED)				LIGO CALIFORNIA INSTITUTE OF TECHNOLOGY MASSACHUSETTS INSTITUTE OF TECHNOLOGY		PART NAME	
DIMENSIONS ARE IN INCHES TOLERANCES: .XX ± .01 .XXX ± .005 ANGULAR ± 1.0°				1. INTERPRET DRAWING PER ASME Y14.5-1994. 2. REMOVE ALL SHARP EDGES, R.02 MIN. 3. DO NOT SCALE FROM DRAWING. 4. ALL MACHINING FLUIDS MUST BE FULLY SYNTHETIC, FULLY WATER SOLUBLE AND FREE OF SULFUR, SILICONE, AND CHLORINE.		aLIGO TMS SEISMIC SAFETY STOP CHAMBER BRACKET	
MATERIAL		FINISH		SYSTEM		SUB-SYSTEM	
304 SSSL		63 μinch Ra ⑦		ADVANCED LIGO		AOS	
NEXT ASSY				DESIGNER		DATE	
D1001781				K. MAILAND		29 JUL 2010	
DRAFT				CHECKER		SIZE DWG. NO.	
M. MILLER				SEE DCN		B	
APPROVAL				APPROVAL		REV.	
SEE DCN				SEE DCN		v2	
SCALE: NONE				PROJECTION:		SHEET 1 OF 2	

D1001929 dLIGO TMS SEISMIC SAFETY STOP CHAMBER BRACKET, PART PDM REV: X-036, DRAWING PDM REV: X-024



### FLAT-PATTERN

 <b>CALIFORNIA INSTITUTE OF TECHNOLOGY</b> <b>MASSACHUSETTS INSTITUTE OF TECHNOLOGY</b>		
SIZE	DWG. NO.	REV.
B	D1001929	v2
SCALE: NONE	PROJECTION:	SHEET 2 OF 2

8 7 6 5 4 3 2 1

8 7 6 5 4 3 2 1

D  
C  
B  
A

D  
C  
B  
A