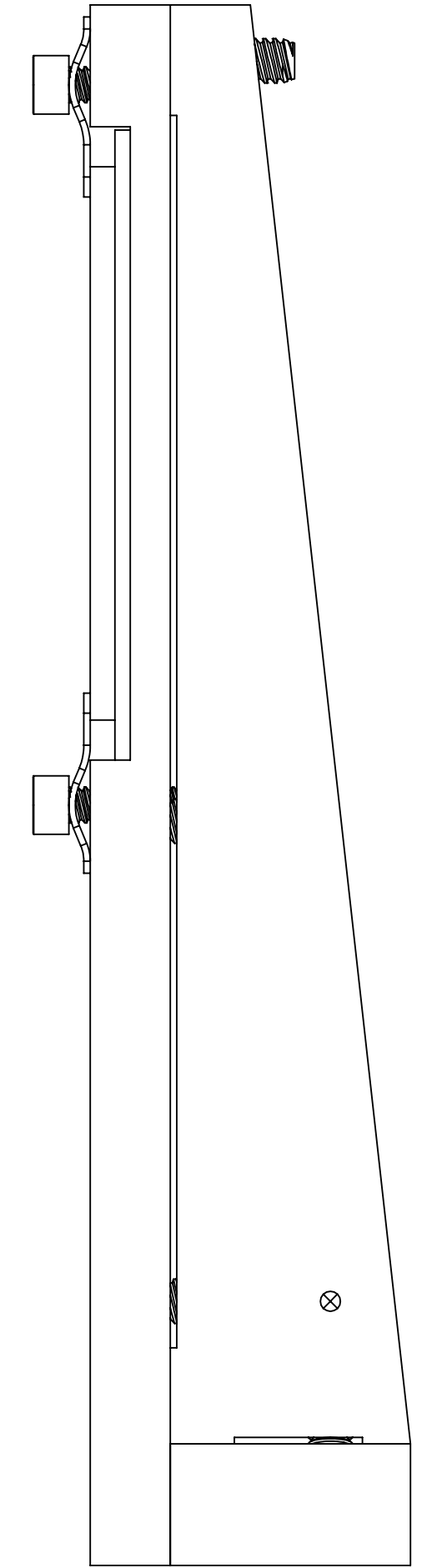
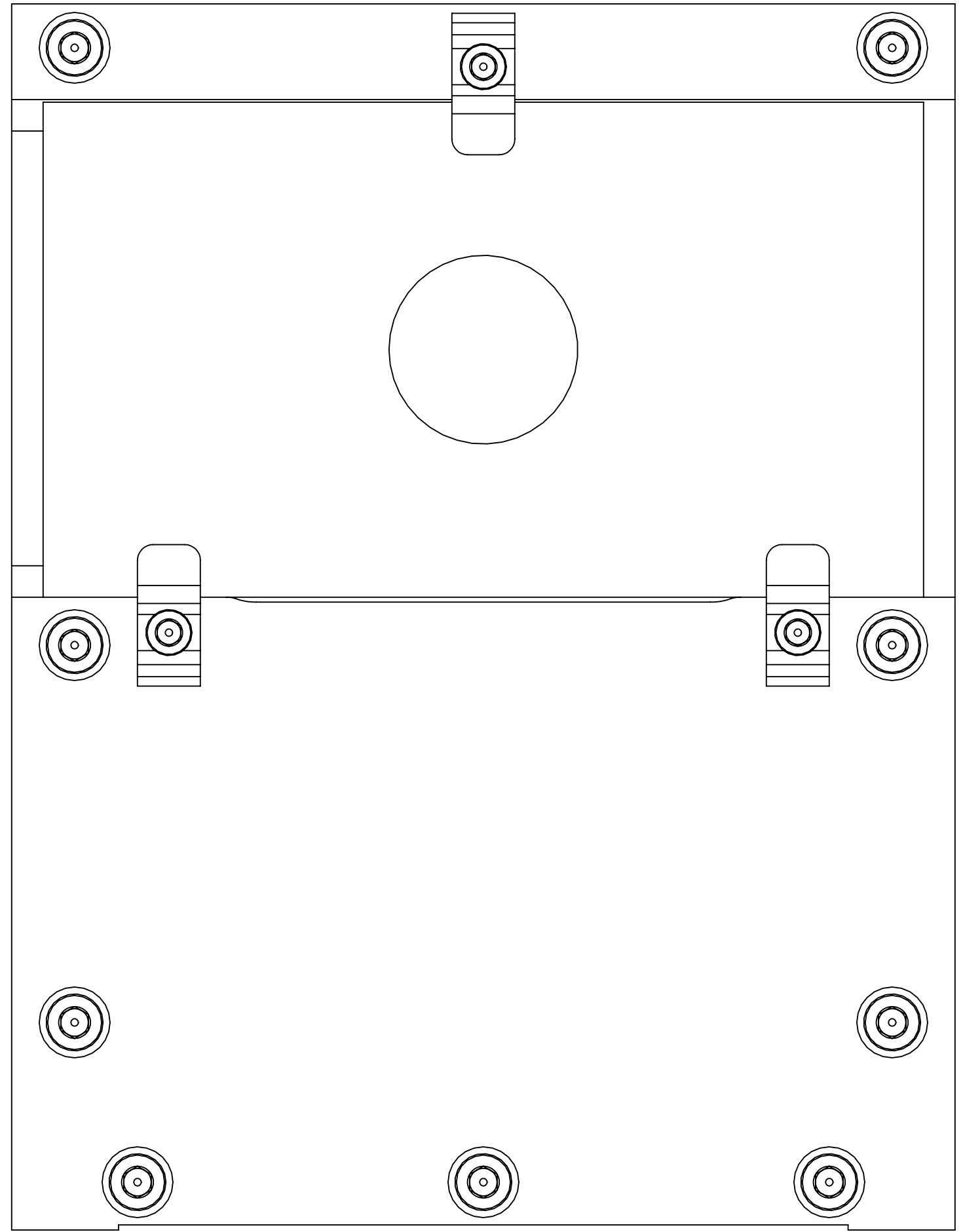
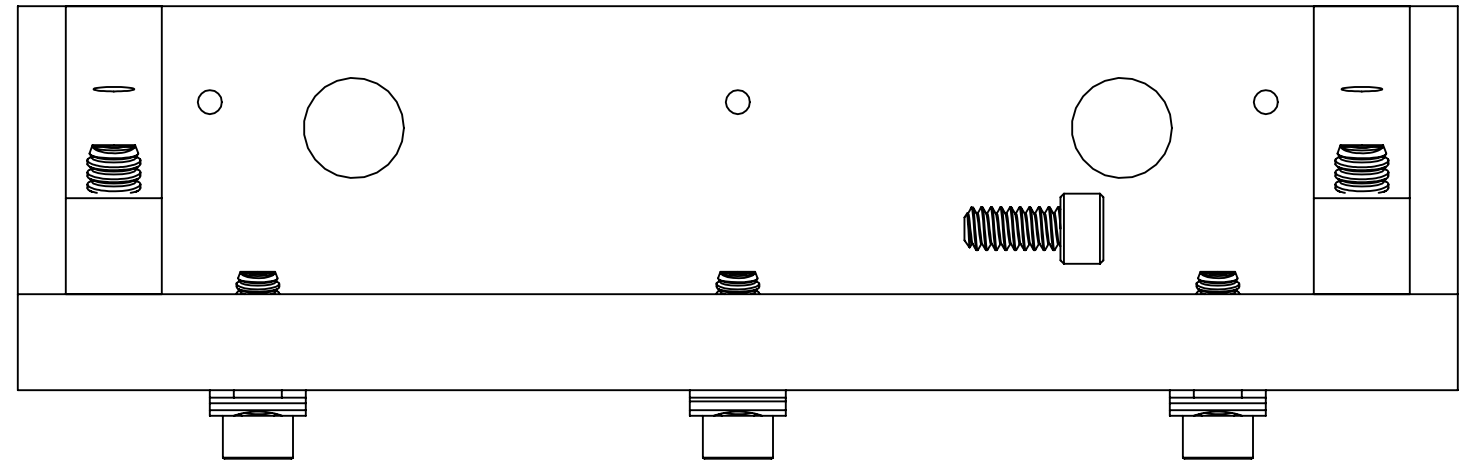
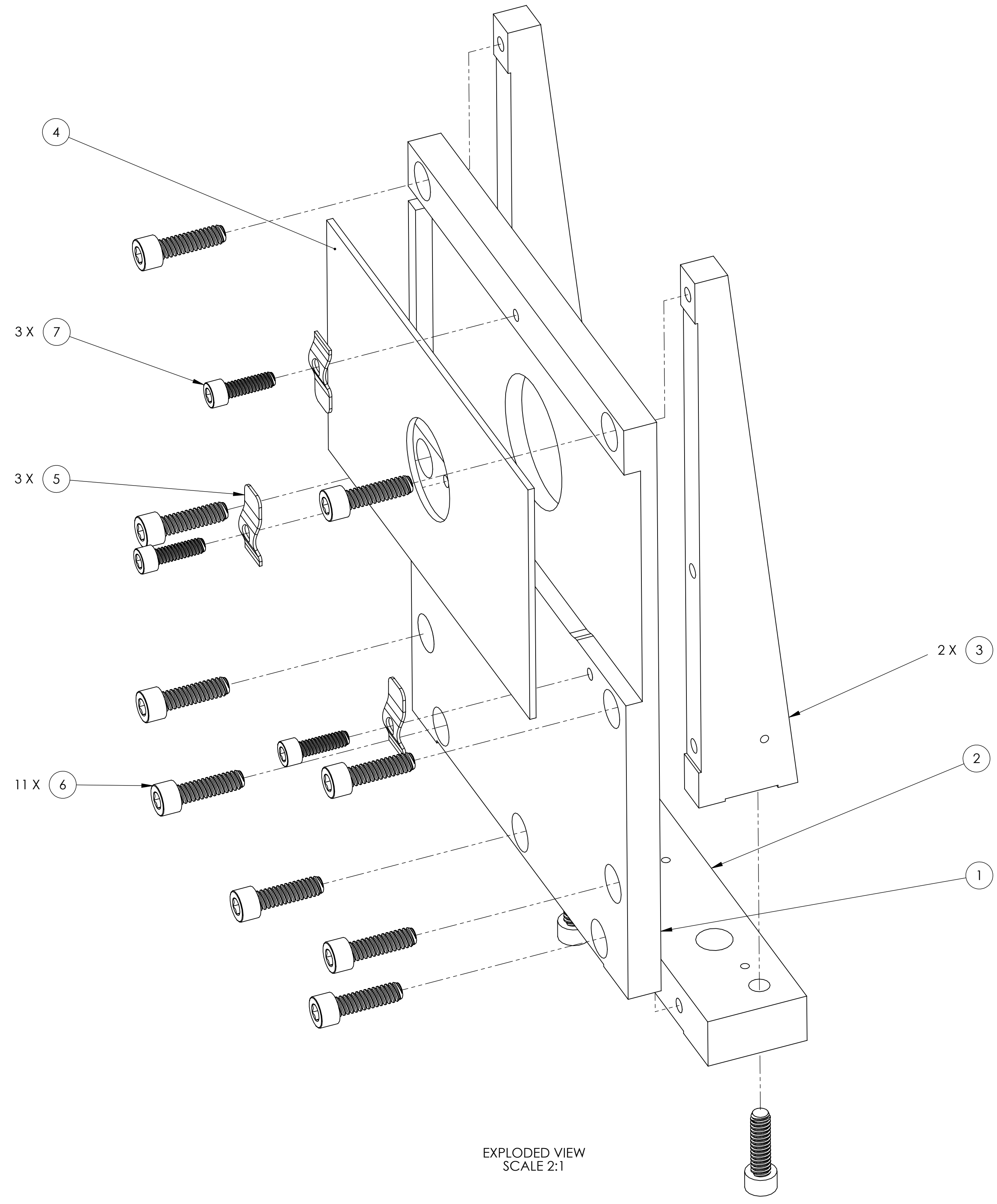


NOTES CONTINUED:

⑤

| REV. | DATE | DCN # | DRAWING TREE # |
|------|-------------|----------|----------------|
| v1 | 7 OCT 2010 | E1000563 | - |
| v2 | 17 DEC 2010 | E1000563 | - |
| v3 | 02 MAR 2011 | E1000563 | - |
| v4 | 17 AUG 2011 | E1000563 | - |



| ITEM NO. | PART NUMBER | DESCRIPTION | MATERIAL | QTY | SPARE | TOTAL |
|----------|-------------|---|-------------------------|-----|-------|-------|
| 7 | 92200A108 | Head Cap Screw 300 Series SS, 4-40 Thrd, 3/8" Length, MS 16995-10 | 18-8 SSSL | 3 | | 0 |
| 6 | 92200A148 | SHCS, 6-32 x .50, 300 SSSL, MS16995-18 | 300 SSSL | 11 | | 0 |
| 5 | D1001919 | BEAM DUMP MOUNTING CLAMP | 304 SSSL | 3 | | 0 |
| 4 | D1001920 | INPUT BAFFLE BEAM DUMP | 18 GA A424 TYPE 1 STEEL | 1 | | 0 |
| 3 | D1001916 | INPUT BAFFLE SIDE SUPPORT | 6061-T6 Al | 2 | | 0 |
| 2 | D1001917 | INPUT BAFFLE BASE | 6061-T6 Al | 1 | | 0 |
| 1 | D1001915 | INPUT BAFFLE HOLDER | 6061-T6 Al | 1 | | 0 |

| | | | | | |
|---|--|---|--|---|--|
| <p>NOTES AND TOLERANCES: (UNLESS OTHERWISE SPECIFIED)</p> <p>1. INTERPRET DRAWING PER ASME Y14.5-1994.</p> <p>2. REMOVE ALL SHARP EDGES, R.02 MIN.</p> <p>3. DO NOT SCALE FROM DRAWING.</p> <p>4. ALL MACHINING FLUIDS MUST BE FULLY SYNTHETIC, FULLY WATER SOLUBLE AND FREE OF SULFUR, SILICONE, AND CHLORINE.</p> | | <p>LIGO CALIFORNIA INSTITUTE OF TECHNOLOGY MASSACHUSETTS INSTITUTE OF TECHNOLOGY</p> | | <p>PART NAME INPUT BAFFLE ASSY</p> | |
| <p>DIMENSIONS ARE IN INCHES</p> <p>TOLERANCES: .XX ± .01 .XXX ± .005</p> <p>ANGULAR ± 0.5°</p> | | <p>MATERIAL N/A</p> | | <p>FINISH N/A μinch</p> | |
| <p>SYSTEM ADVANCED LIGO</p> | | <p>SUB-SYSTEM AOS</p> | | <p>DESIGNER TQ. NGUYEN</p> | |
| <p>NEXT ASSY D0900623</p> | | <p>DATE 01 AUG 2010</p> | | <p>SIZE D</p> | |
| <p>DATE 25 AUG 2010</p> | | <p>CHECKER M. SMITH</p> | | <p>DWG. NO. D1001918</p> | |
| <p>APPROVAL D. COYNE</p> | | <p>SCALE: 2:1</p> | | <p>PROJECTION: FIRST ANGLE</p> | |
| <p>REVISIONS</p> | | <p>REV. v4</p> | | <p>SHEET 1 OF 1</p> | |

D:\001915_d\UGO_ACS_Wedge_Window_Input_Baffle Assy_PART_PDM_REV-X-019_DRAWING_PDM_REV-X-014