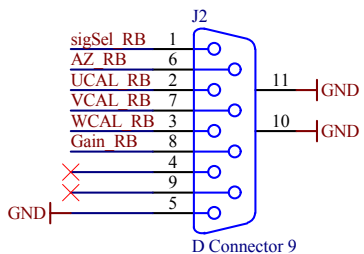
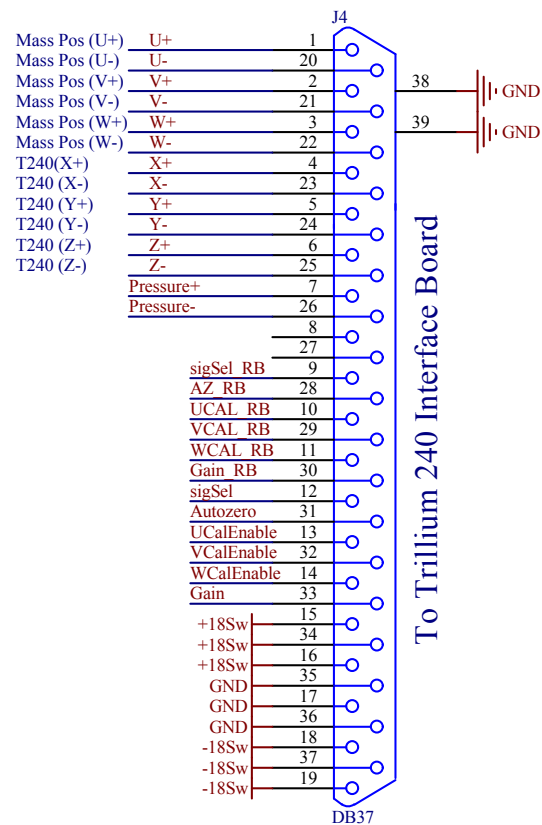
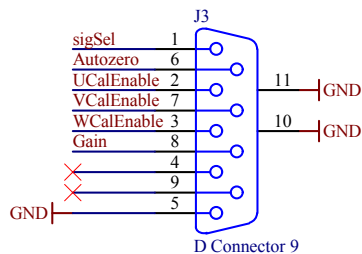


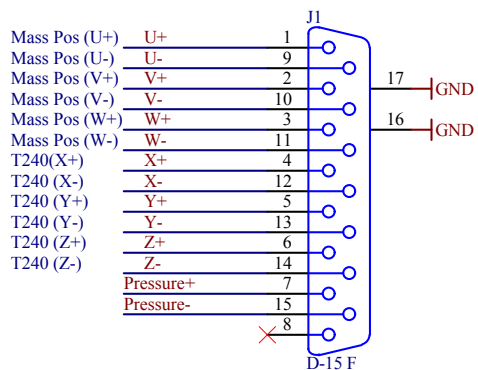
To Binary In Interface Chassis



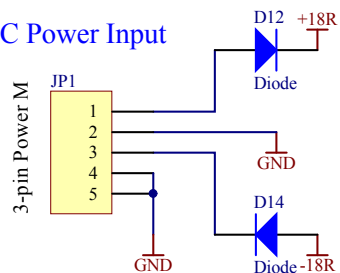
From Binary Out Interface Chassis



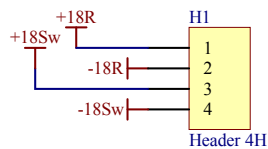
Output to AdL Anti-Alias Chassis



DC Power Input

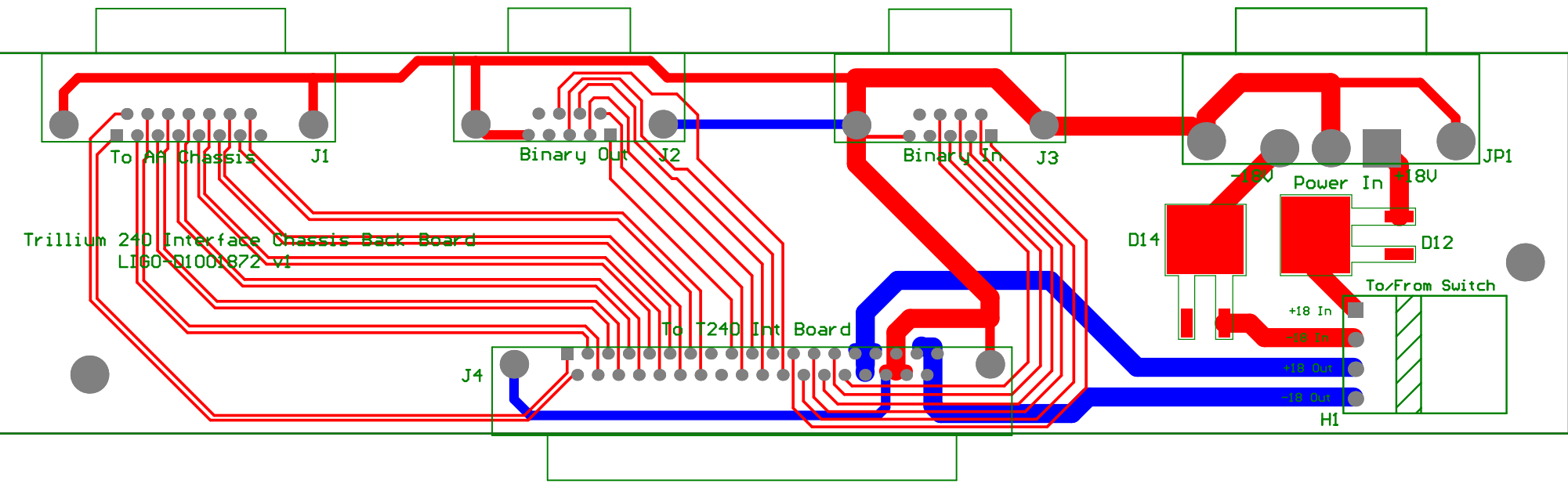


Power Switch



To Switch P/N PB257-ND

Title Trillium 240 Interface Chassis Back Board			
Size: A	DCC Number: D1001872		Ligo Project California Institute of Technology Massachusetts Institute of Technology
Drawn by: Ben Abbott	Date: 11/2/2010	Revision: v1	
File: C:\restored\Ben\Seismic\ISI\BSC_ISI\Trillium Interface\Trillium Back Board\Trillium Back Board_Schematic.dwg			Cannot open file C:\Ben\miscellan y\ligologo_t.jpg



Trillium 240 Interface Chassis Back Board
LI60-D1001872 v1

To AF Chassis J1

Binary Out J2

Binary In J3

Power In JP1

To T240 Int Board J4

To/From Switch

+18 In

-18 In

+18 Out

-18 Out

HI

D14

D12